

PRODUCT DATASHEET

PL PFM 600 UGR19 36 W 3000 K

PANEL PERFORMANCE 600 UGR<19 | Square recessed panel luminaires, tool-free installation and low glare, for 600 x 600 mm ceiling systems



AREAS OF APPLICATION

- Direct replacement for luminaires with fluorescent lamps
- Offices, conference rooms
- Reception areas, foyers, corridors, elevators
- Suitable for recessed ceiling systems with grid size of 600 x 600 mm

PRODUCT BENEFITS

- Tool-free electrical connection due to push button connector
- Through-wiring possible with included connector box
- Energy savings thanks to high system efficacy: up to 120 lm/W
- Good glare reduction (UGR < 19)
- Extended services such as energy monitoring and remote maintenance possible with DALI versions
- Comfortable light and high color consistency
- External driver for extended flexibility and easy installation
- Low flicker light thanks to special electronic control gear
- Emergency lighting possible with LEDVANCE Emergency Conversion Box
- 5 years guarantee

PRODUCT FEATURES

- Extruded aluminum frame
- Polystyrene diffuser



- 3-pole terminal block, cable cross section up to 3 x 2.5 mm² (25 W and 30 W versions)
- 5-pole terminal block, cable cross section up to 5 x 2.5 mm² (36 W versions and DALI types)
- DALI versions with IoT-ready DALI-2 driver
- Lifetime (L80/B10): up to 60,000 h (at 25 °C)
- Versions available with CRI 90

TECHNICAL DATA

Electrical data

Nominal wattage	36.00 W
Operating mode	External LED driver
Nominal voltage	220...240 V
Mains frequency	50/60 Hz
Power factor λ	> 0.95
Max. no. of lum. on circuit break. B16 A	13
Max. no. of lum. on circuit break. C10 A	12
Max. no. of lum. on circuit break. C16 A	19
Inrush current	30 A
Total harmonic distortion	< 10 %
Inrush current time T_{h50}	200 μ s

Luminaire control gear data

ECG - Life time	74 000 h
Low flicker	Yes
Output current	760 mA
ECG - Output ripple current	<5 %

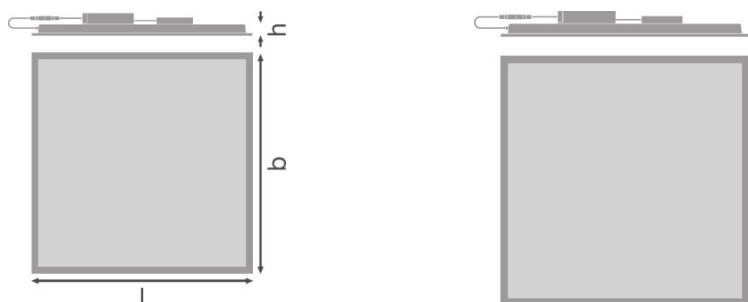
Photometrical data

Color temperature	3000 K
Color rendering index Ra	>80
Light color (designation)	Warm White
Luminous flux	4320 lm
Luminous efficacy	120 lm/W
Standard deviation of color matching	3 sdc

Light technical data

Beam angle	90.00 °
UGR lateral	<19
UGR longitudinal	<19

Dimensions & weight



Length	595.0 mm
Width	595.0 mm
Height	32.0 mm
Product weight	1900.00 g
Mounting width	575.0 mm
Mounting length	575.0 mm

Colors & materials

Product color	White
Housing color	White
Body material	Aluminum
Light emitting surface material	Polystyrene

Temperatures & operating conditions

Ambient temperature range	-10...+50 °C
----------------------------------	--------------

Lifespan

Number of switching cycles	50000
Lifespan L70/B50 at 25 °C	100000 h
Lifespan L80/B10 at 25 °C	60000 h
Lifespan L90/B10 at 25 °C	35000 h

Additional product data

Mounting type	Recessed/Suspended/Surface
Mounting location	Ceiling / Wall
Recommended control gear	OSRAM OTI DALI 50/220-240/1A4 NFC
Low flicker	Yes
Product remark	Available from September 2020

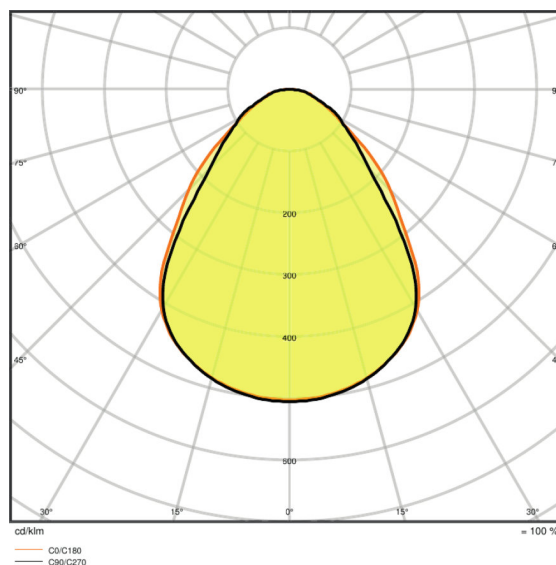
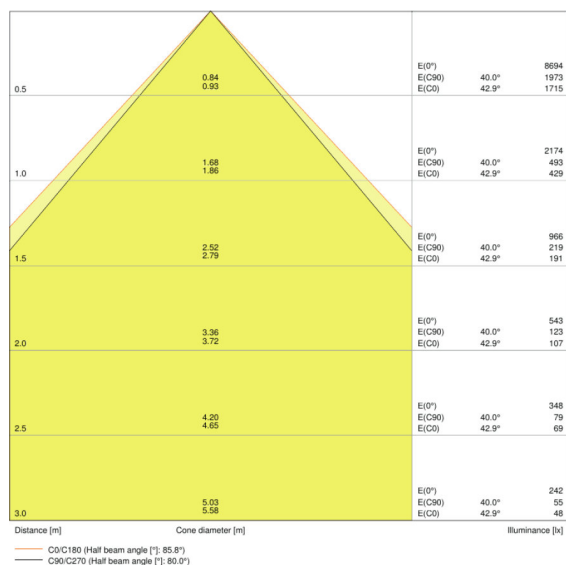
Capabilities

Dimmable	No
Type of connection	Screwless terminal
LED module replaceable	Not replaceable

Certificates & standards

Type of protection	IP40/IP20
Protection class	II
Protection class IK (shock resistance)	IK03
Glow Wire Test according to IEC 60695-2-12	650 °C
Photobiological safety group EN62778	RG 0
Photobio. safety group acc. to EN62471	RG 0
Standards	CE/CB/ENEC/EAC/RoHS

Light Distribution



LDC typ cone

LDC typ polar

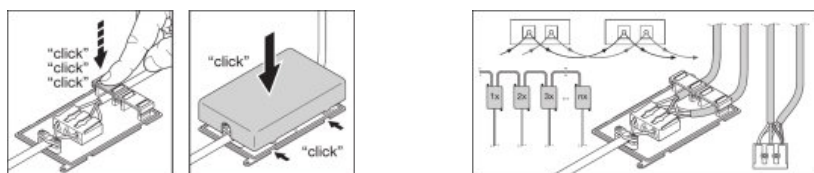
EQUIPMENT / ACCESSORIES

- Accessories for several mounting options available
- Connector box with 3-pole or 5-pole terminal included
- Security rope for luminaire included
- Security brackets included
- External control gear included

LOGISTICAL DATA

Product code	Packaging unit (Pieces/Unit)	Dimensions (length x width x height)	Gross weight	Volume
4058075440418	Folding carton box 1	52 mm x 622 mm x 694 mm	2385.00 g	22.45 dm ³
4058075440425	Shipping carton box 4	640 mm x 220 mm x 710 mm	10835.00 g	99.97 dm ³

The mentioned product code describes the smallest quantity unit which can be ordered. One shipping unit can contain one or more single products. When placing an order, for the quantity please enter single or multiples of a shipping unit.

ADDITIONAL CATALOG INFORMATION

REFERENCES / LINKS

For Guarantee see

▶ www.ledvance.com/guarantee

DISCLAIMER

Subject to change without notice. Errors and omission excepted. Always make sure to use the most recent release.