



Serie

**Stilo - 60 RPT Canal-16**

### Especificaciones Técnicas

Carpintería practicable con Rotura de Puente Térmico

Cámara de 16 mm.

Junta abierta con Junta Central

Sección de Marco ..... 53 mm.

Sección de Hoja ..... 60 mm.

Galce de vidrio ..... de 10,5 a 34,5 mm.

Peso Máximo por : Hoja Practicable : 120 Kg.<sup>(1)</sup>

Hoja Oscilo- Batiente : 80 Kg.<sup>(1)</sup>

Medidas Máximas por Hoja para todas las aperturas :  
1300 mm. x 2400 mm.<sup>(1)</sup>

(1) Consultar rangos de aplicación con nuestro Dpto. Técnico Comercial

### Clasificación obtenida

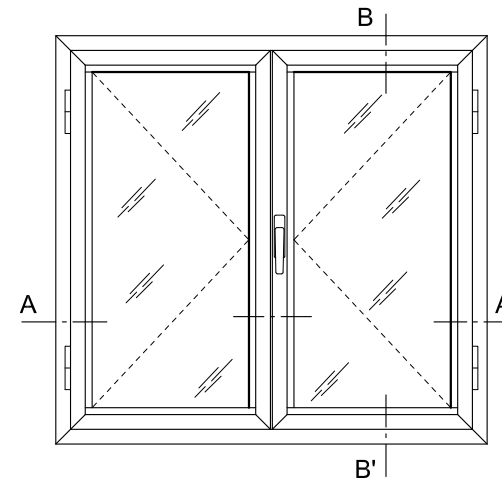
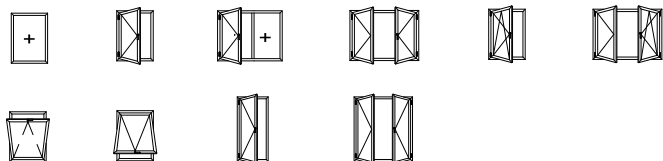
Permeabilidad al aire*	CLASE 4
Estanqueidad al agua*	CLASE E1500
Resistencia al viento*	CLASE C5
Transmitancia térmica**	2,0 W(m <sup>2</sup> K)
Aislamiento Acústico***	38 (-1;-5)dB

\* Ventana de 2 hojas de 1230 x 1480 mm .

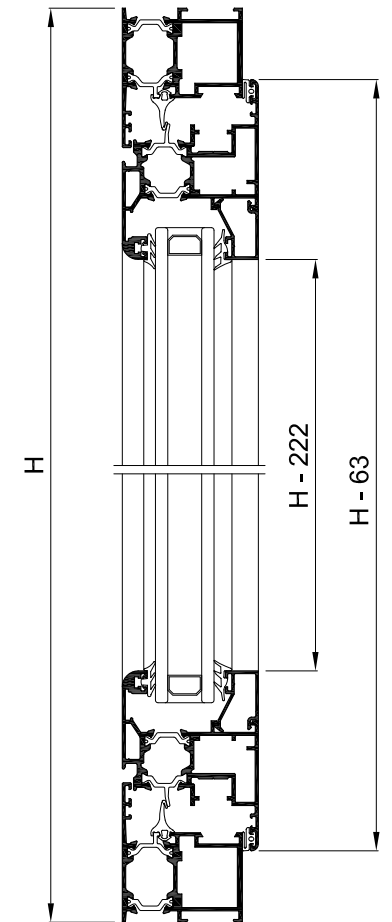
\*\* Ventana de 2 hojas de 1480 x 2180 mm ; Vidrio Uv: 1,0 W(m<sup>2</sup>K)

\*\*\* Ventana de 2 hojas de 1230 x 1480 mm ; Vidrio Rw: 40 (-2,-6)dB

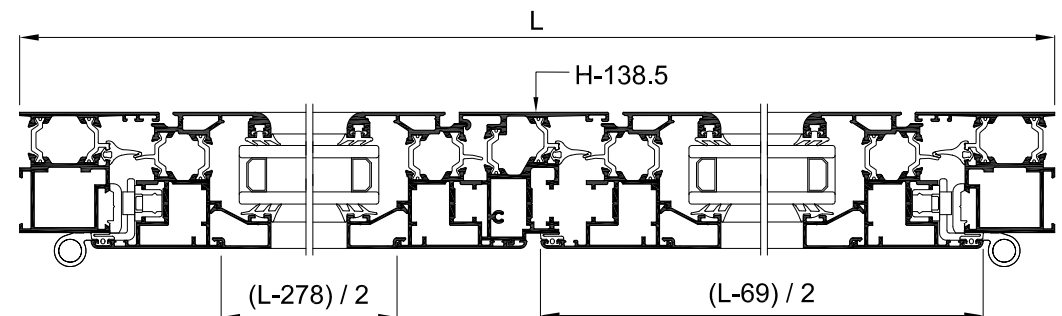
### Posibilidades de Apertura



VENTANA 2 HOJAS PRACTICABLES



Sección B-B'

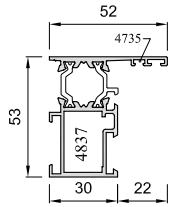


Sección A-A'

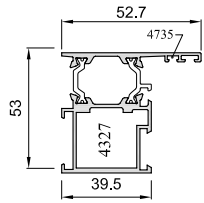
\* Tabla de Junquillos 2 (Altura 22 mm)

# Perfiles

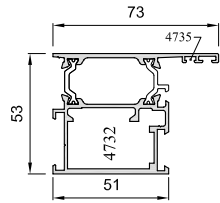
## Stilo - 60 RPT Canal-16



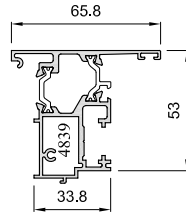
**8796M**



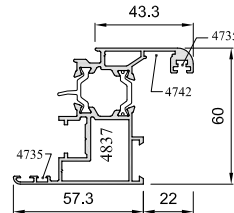
**8781M**



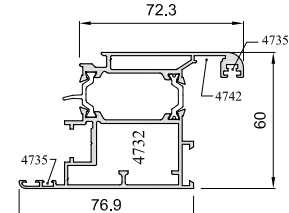
**8787M**



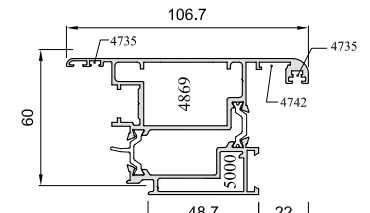
**8785M**



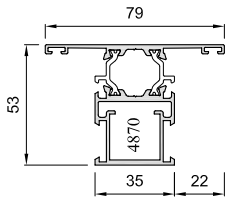
**8783M**



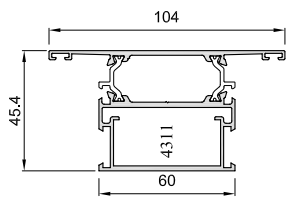
**8789M**



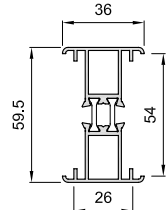
**8791M**



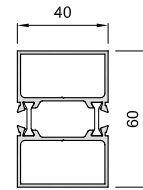
**8794M**



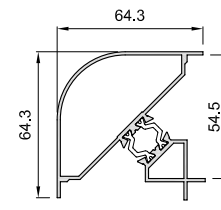
**8792M**



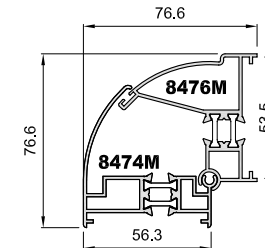
**8482M**



**5283M**

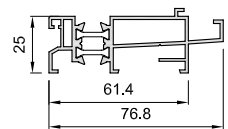


**8426M**

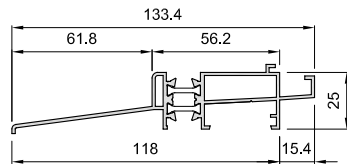


**8476M**

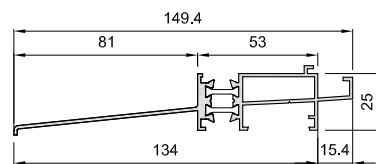
**8474M**



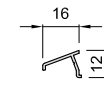
**8483M**



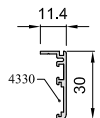
**8287M**



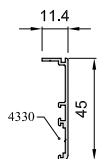
**8288M**



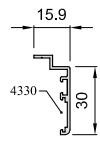
**8428**



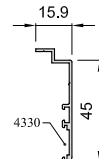
**281**  
1140



**8629**



**8832**

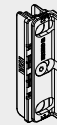
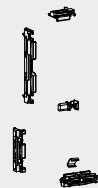
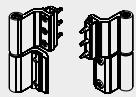
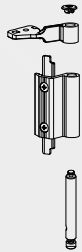


**8630**



# Accesorios

## Stilo - 60 RPT Canal-16



**4821**  
Bisagra Pract.  
c/ autorroscantes

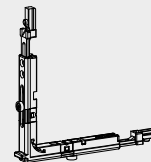
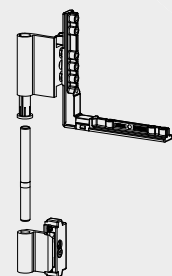
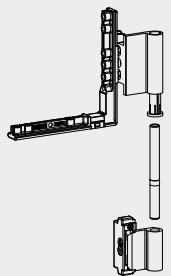
**4835**  
Manilla  
cuadradillo COVER

**4812**  
Mecanismo manilla  
cuadrad.

**4802**  
Kit mecanismo  
manilla cuadrad.

**4810**  
Puntal

**4828**  
Enc. anti-falsa  
maniobra cremona



**4800**  
Kit de bisagras  
Oscilo-batiente

**4801**  
Kit bisagras simetric.  
Hoja pasiva

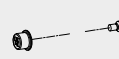
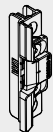
**4804**  
Compás Tipo O

**4805**  
Compás Tipo 1

**4806**  
Compás Tipo 2

**4809**  
Angulo de reenvio  
principal

**4811**  
Angulo de reenvio  
secundario



**4828**  
Enc. anti-falsa  
maniobra manilla  
2 hojas

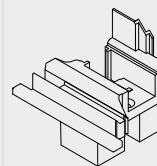
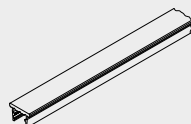
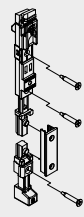
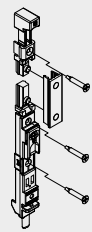
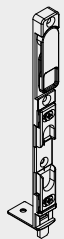
**4817**  
Pieza de retén  
pletina

**4813**  
Terminal de  
pletina

**4818**  
Cerradero doble

**4820**  
Bulón  
suplementario

**4814**  
Cerradero regul.  
cámara Europea



**4824**  
Pasador simple  
H. Pasiva

**4826**  
Pasador extensible  
H. Pasiva Inferior

**4822**  
Pasador extensible  
H. Pasiva Superior

**4832**  
Soporte encuent.  
pasador bidirecc.

**4830**  
Pletina de  
Conexión

**4337**  
Embelle. salida  
agua c/membr.

**4035**  
Embellecedor  
salida agua

**4864**  
Juego tapas  
acople



**4837**  
Escuadra Hoja

**4327**  
Escuadra  
Hoja balconera

**4732**  
Escuadra  
balconera

**4735**  
Escuadra  
alineamien.  
2 mm.

**4742**  
Escuadra  
alineamiento  
excéntrica

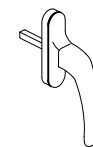
**4870**  
Taco Stilo  
pilastra ventana

**4311**  
Taco pilastra  
ancha

**4369**  
Junta central

**4055**  
Junta perimetral  
hoja

**4827**  
Pasador  
bidireccional



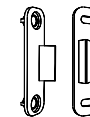
**4190**  
Manilla  
cuadradillo 7 mm.



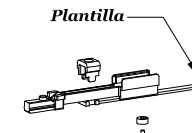
**4043**  
Juego tapas  
condensación



**4815**  
Cerradero regulable  
a canal



**4819**  
Tercer punto  
de cierre



**4807**  
Cierre suplement.  
compás



**4741**  
Goma para  
batiente



**4379**  
Junta acustica  
cerco STILO



**4303**  
Junta acústica  
cerco



**4056**  
Junta perimetral  
hoja "TC"



**4397**  
Junta Stilo base  
rígida



**4091**  
Goma interior  
acrist. de 6 a 8 mm.



**4090**  
Goma interior  
acrist. de 4 a 6 mm.



**4089**  
Goma interior  
acrist. de 2 a 4 mm.



**4078**  
Pieza sujeción  
junquillo curvo



**4850**  
Goma exterior  
acristamiento  
con alas



**4057**  
Goma interior  
acristamiento



**4370**  
Junta central  
"TC"

### Accesorios Varios

- 4838** Util General Canal 16
- 4856** Util Cremona Canal 16
- 4334** Tijeras inglesas goma
- 4335** Ruleta para goma
- 1161** Patillas
- 4733** Jgo.Fresas Cerco de 53 mm.