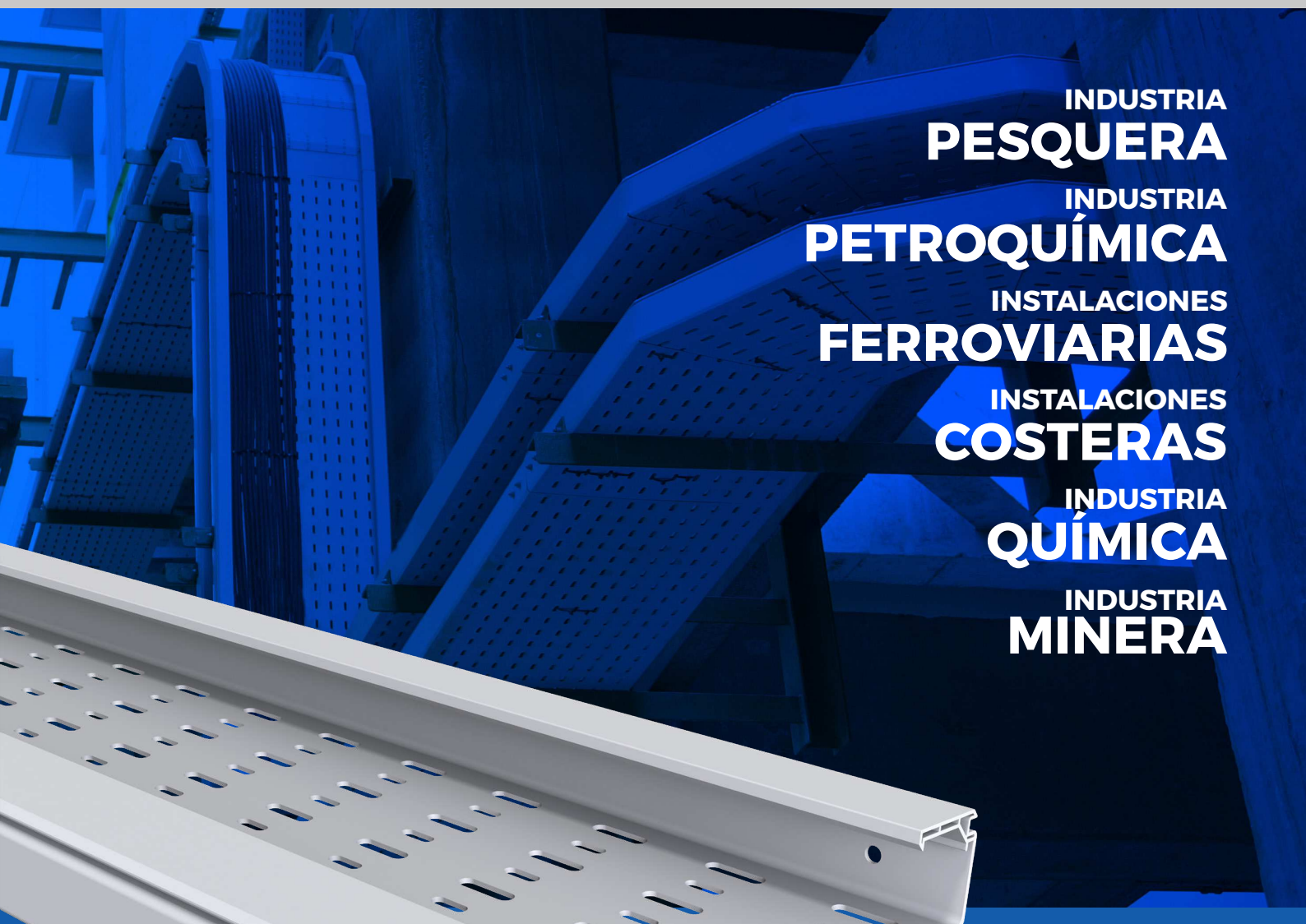


Basorplast BPE

Guía rápida



INDUSTRIA
PESQUERA

INDUSTRIA
PETROQUÍMICA

INSTALACIONES
FERROVIARIAS

INSTALACIONES
COSTERAS

INDUSTRIA
QUÍMICA

INDUSTRIA
MINERA

BANDEJAS
aislantes
de **PVC UV**
para uso
EXTERIOR



FICHA TÉCNICA BASORPLAST BPE

Modelos (AxB):

60x100; 60x150; 60x200; 60x300; 100x200; 100x300; 100x400; 100x600.

Tipos: Perforadas o ciegas

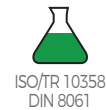
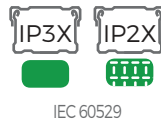
Acabados: PVCMI UV RAL 7035

Características de la bandeja:

- Sistema no metálico
- Resistente a los rayos UV
- Excelente comportamiento al exterior
- Resistencia al impacto: 20J salvo 60x100 con 10J
- Temperatura mínima: -4°F (-20°C)
- Temperatura máxima: 140°F (60°C)
- No propagador de la llama
- Sin continuidad eléctrica
- Aislante
- Rigidez dieléctrica: 18+/-2 KV/mm
- Alta resistencia a las sustancias corrosivas
- Reacción M1 al fuego: UNE 23727
- Test de llama incandescente: 1760°F (960°C) EN 60695-2-11
- Inflamabilidad: UL 94-VO, ANSI/UL 94-1995
- LOI > 50% EN ISO 4589
- Cumple: RoHS 2002/95/CE
- Materia prima sin silicona

- **Ensamblado:** H60 (2 uniones + 4 tornillos)
H100 (2 uniones + 8 tornillos)
- **Instalación:** No permitido bajo otras canalizaciones como agua, vapor o gas.
- **Ventilación:** Distancia mínima entre bandejas de 250mm.
- **Ambientes:** Húmedos, salinos y químicos.
- **Expansiones:** Dependiendo de las variaciones de temperatura (AT) dejar un espacio (h) entre las bandejas acorde a la siguiente tabla:

ΔT (°F)	ΔT (°C)	h (mm)
68	20	5
86	30	7
104	40	9
122	50	11



Safe Working Load Carga de trabajo admisible - kg/m (lb/ft)			
Temp. Max 40° (104 F°)	2,4m (8ft)	1,8m (8ft)	1,5m (5ft)
BPE-60X100	9,7 (6,5)	17,3 (11,6)	25 (16,7)
BPE-60X150	9,9 (6,6)	17,6 (11,8)	25,3 (17)
BPE-60X200	28,1 (18,8)	49,9 (33,5)	71,9 (48,3)
BPE-60X300	55,2 (37)	98,1 (65,9)	141,3 (94,9)
BPE-100X200	69,6 (46,7)	123,7 (83,1)	178,2 (119,7)
BPE-100X300	107,2 (72)	190,5 (128)	274,4 (184,4)
BPE-100X400	178 (119,6)	316,4 (212,6)	455,6 (306,2)
BPE-100X600	219,7 (147,6)	390,5 (262,4)	562,4 (377,9)

Safe Working Load Carga de trabajo admisible - kg/m (lb/ft)			
Temp. Max 60° (140 F°)	2,4m (8ft)	1,8m (8ft)	1,5m (5ft)
BPE-60X100	6,9 (4,6)	12,3 (8,3)	17,8 (11,9)
BPE-60X150	7 (4,7)	12,5 (8,5)	18 (12,1)
BPE-60X200	20 (13,4)	35,6 (23,9)	51,3 (34,5)
BPE-60X300	39,4 (26,4)	70 (47)	100,8 (67,7)
BPE-100X200	49,7 (33,4)	88,3 (59,3)	127,2 (85,5)
BPE-100X300	76,5 (51,4)	136 (91,4)	195,9 (131,6)
BPE-100X400	127 (85,3)	225,9 (151,8)	325,3 (218,6)
BPE-100X600	156,8 (105,3)	278,8 (187,3)	401,5 (269,8)

BANDEJA BPE-P / H60



3m (10ft)	PVC M1 UV	
	PVC M1 UV	KG/M
BPE 60X100	2/10070	0.73
BPE 60X150	2/10071	0.98
BPE 60X200	2/10072	1.45
BPE 60X300	2/10073	2.34



BANDEJA BPE-C / H60



3m (10ft)	PVC M1 UV	
	PVC M1 UV	KG/M
BPE-C 60X100	2/10062	0.77
BPE-C 60X150	2/10063	1.03
BPE-C 60X200	2/10064	1.54
BPE-C 60X300	2/10065	2.48



BANDEJA BPE-P / H100



3m (10ft)	PVC M1 UV	
	PVC M1 UV	KG/M
BPE 100X200	2/10074	2.25
BPE 100X300	2/10075	3.63
BPE 100X400	2/10076	4.30
BPE 100X600	2/10077	6.40



BANDEJA BPE-C / H100



3m (10ft)	PVC M1 UV	
	PVC M1 UV	KG/M
BPE-C 100X200	2/10066	2.38
BPE-C 100X300	2/10067	3.45
BPE-C 100X400	2/10068	4.54
BPE-C 100X600	2/10069	6.72



CURVA PLANA 90° CPBPE



CPBPE	PVC M1 UV	
	PVC M1 UV	KG/UD
CPBPE 60X100	2/10089	0.40
CPBPE 60X150	2/10090	0.54
CPBPE 60X200	2/10091	0.91
CPBPE 60X300	2/10092	1.61
CPBPE 100X200	2/10093	1.24
CPBPE 100X300	2/10094	2.14
CPBPE 100X400	2/10095	3.27
CPBPE 100X600	2/10096	4.08



TAPA C.PLANA TCPBPE



TCPBPE	PVC M1 UV	
	PVC M1 UV	KG/UD
TCPBPE 100	2/10097	0.18
TCPBPE 150	2/10098	0.26
TCPBPE 200	2/10099	0.43
TCPBPE 300	2/10100	0.71
TCPBPE 400	2/10101	1.12
TCPBPE 600	2/10102	1.94



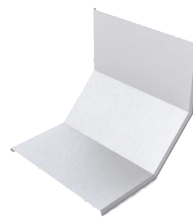
CURVA CÓNCAVA CCBPE



CCBPE	PVC M1 UV	
	PVC M1 UV	KG/UD
CCBPE 60X100	2/10103	0.39
CCBPE 60X150	2/10104	0.49
CCBPE 60X200	2/10105	0.78
CCBPE 60X300	2/10106	1.19
CCBPE 100X200	2/10107	1.37
CCBPE 100X300	2/10108	1.98
CCBPE 100X400	2/10109	2.55
CCBPE 100X600	2/10110	3.23



TAPA C.CÓNCAVA TCCBPE



TCCBPE	PVC M1 UV	
	PVC M1 UV	KG/UD
TCCBPE 60X100	2/10111	0.18
TCCBPE 60X150	2/10112	0.24
TCCBPE 60X200	2/10113	0.37
TCCBPE 60X300	2/10114	0.52
TCCBPE 100X200	2/10115	0.56
TCCBPE 100X300	2/10116	0.61
TCCBPE 100X400	2/10117	0.81
TCCBPE 100X600	2/10118	1.04



DERIVACIÓN PDBPE



PDBPE	GSP 7035	
	GSP 7035	KG/UD
PDBPE 60/100	2/10135	0.24



PERFIL SEPARADOR PSBPE



3M PSBPE	PVC M1 UV	
	PVC M1 UV	KG/M
PSBPE 60	2/10144	0.09
TPSBPE 100	2/10145	0.13



CURVA CONVEXA CXBPE



CXBPE	KG/UD	
	PVCM1 UV	KG/UD
CXBPE 60X100	2/10119	0.39
CXBPE 60X150	2/10120	0.49
CXBPE 60X200	2/10121	0.78
CXBPE 60X300	2/10122	1.19
CXBPE 100X200	2/10123	1.37
CXBPE 100X300	2/10124	1.98
CXBPE 100X400	2/10125	2.55
CXBPE 100X600	2/10126	3.23



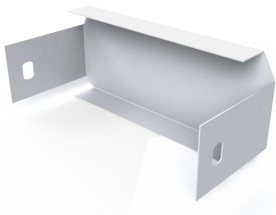
TAPA C.CONVEXA TCXBPE



TCXBPE	KG/UD	
	PVCM1 UV	KG/UD
TCXBPE 60X100	2/10127	0.22
TCXBPE 60X150	2/10128	0.30
TCXBPE 60X200	2/10129	0.49
TCXBPE 60X300	2/10130	0.65
TCXBPE 100X200	2/10131	0.75
TCXBPE 100X300	2/10132	0.82
TCXBPE 100X400	2/10133	1.14
TCXBPE 100X600	2/10134	1.39



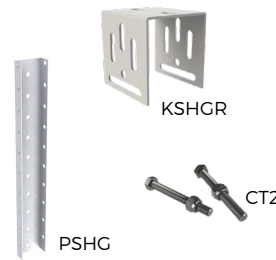
TAPA FINAL TFBPE



TFBPE	KG/UD	
	GSP 7035	KG/UD
TFBPE 60X100	2/10136	0.09
TFBPE 60X150	2/10137	0.13
TFBPE 60X200	2/10138	0.15
TFBPE 60X300	2/10139	0.21
TFBPE 100X200	2/10140	0.24
TFBPE 100X300	2/10141	0.31
TFBPE 100X400	2/10142	0.40
TFBPE 100X600	2/10143	0.55



PERFIL Y CARTELA



PSHG-PSHGR	KG/UD	
	PVCM1 UV	KG/UD
PSHG 2M	2/17281	2.29
PSHGR 600	2/17283	2.05
TFSHGR PVC	2/12112	0.25
KSHGR	2/17282	0.61
CT2 M10X100	2/17228	0.11

SOPORTE SHG



SHG	KG/UD	
	PVM1 UV	KG/UD
SHG 100	2/10011	0.19
SHG 150	2/10012	0.27
SHG 200	2/10013	0.34
SHG 300	2/10014	0.54
SHG 400	2/10015	0.95
SHG 600	2/10016	1.10



SOPORTE SVG



SVG	KG/UD	
	PVM1 UV	KG/UD
SVG 100	2/10050	0.23
SVG 150	2/10051	0.26
SVG 200	2/10052	0.28
SVG 300	2/10053	0.33
SVG 400	2/10054	0.38
SVG 600	2/10055	0.48



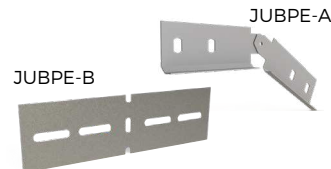
UNIONES Y TORNILLOS



JUBPE	KG/UD	
	PVCM1 UV	KG/UD
JUBPE 60	2/10084	0.05
JUBPE 100	2/10085	0.09
CTBP-100	2/10017	0.40



UNIONES BISAGRA Y ARTICULADAS



JUBPE-B	KG/UD	
	i304	KG/UD
JUBPE-B 60	2/3520	0.13
JUBPE-B 100	2/5038	0.22
JUBPE-A 60	2/5036	0.09
JUBPE-A 100	2/5037	0.16



BRIDA IK BIK10



BIK10-BPE	KG/UD			
	i304	KG/UD	i316	KG/UD
BIK10-BPE 60X100	2/17340	0.03	2/17347	0.03
BIK10-BPE 60X150	2/17341	0.05	2/17348	0.05
BIK10-BPE 60/100X200	2/17342	0.07	2/17349	0.07
BIK10-BPE 60/100X300	2/17343	0.09	2/17350	0.09
BIK10-BPE 100X400	2/17345	0.20	2/17352	0.20
BIK10-BPE 100X600	2/17346	0.49	2/17353	0.49

