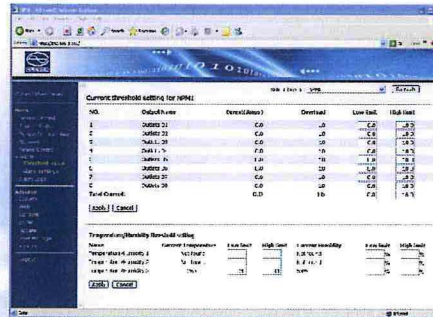


Basic Introduction

Main Characteristics

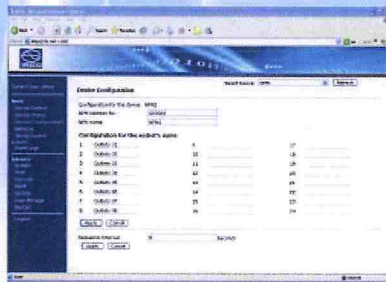
Remotely monitoring, controlling and managing function:

- Current consumption measurement;
- Keep the original state;
- Set the limiting value to alarm;
- System automatic alarm;
- Daisy-chain;
- Log record;
- User management;



Alarming Methods

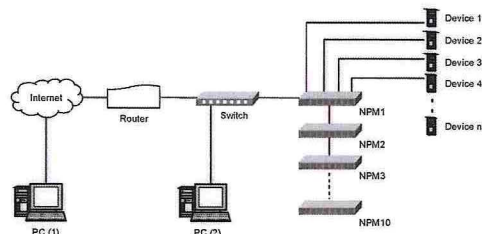
- The indicator on NPM controlling panel flashes and the buzzer alarms;
- The indicator on the Web interface flashes and the buzzer in PC alarms;
- Automatically send E-mail to system administrator;
- SNMP send alarming information;



Software system:

Embedded controlling software system is multi-user operating system which support software update, can access by:

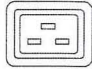
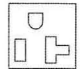

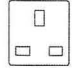
- Web, through IE;
- SNMP (V1/V2/V3), through standard network working station;
- Telnet, SSH, through command-line console;



Technical Performance Form

Main function	Technical instruction	Product classification			
		Monitor		Control	
		A	B	C	D
Monitoring	Total load current	•	•	•	•
	Load current of each outlet		•		•
	On/Off state of each outlet		•	•	•
	System operating state	•	•	•	•
	Temperature/Humidity	•	•	•	•
	Smog sensor	•	•	•	•
	Door sensor	•	•	•	•
Controlling	Water logging sensor	•	•	•	•
	On/Off of each outlet			•	•
	Set the interval time of outlets' sequential on/off			•	•
Keep the original state	Set the on/off time of each outlet			•	•
	Keep the original state of each outlet when reset			•	•
Set the limiting value to alarm	The limiting range of total load current	•	•	•	•
	The limiting range of the load current of each outlet		•		•
	The limiting range of temperature and humidity	•	•	•	•
System automatic alarm	The total load current exceeds the limiting value	•	•	•	•
	The load current of individual outlet exceeds the limiting value		•		•
	Temperature/Humidity exceeds the limiting value	•	•	•	•
	individual outlet goes wrong		•	•	•
	Smog	•	•	•	•
	Water-logging	•	•	•	•
	Door opening	•	•	•	•
Alarming method	The indicator on NPM controlling panel flashes and the buzzer alarms				
	The indicator on the Web interface flashes and the buzzer in PC alarms				
	Automatically send E-mail to system administrator				
	SNMP sends alarm information				
Current consumption measurement	Automatically record the current consumption in unit time				
Daisy-chain	Daisy-chain 10pcs NPM at most by radial link method				
Log record	Record and save the alarming information of NPM, check and export the alarming records				
User management	Set user's right				
Software system	Embedded controlling software system(multi-user operating, support software update)				
Accessing method	Web, access through IE				
	SNMP (V1/V2/V3), access to control through standard network working station				
	Telnet, SSH, access to control through command controlling station				

Input/Outlet Characteristics

Main function	Item	Parameter		
		Single Phase	Three Phase	
Input characteristic	Rated input voltage	110/220VAC 50/60 Hz	380VAC 50/60 Hz	
	Input standard	IEC60309 industrial plug/IP44		
	Cable length	3M		
	Max load current	32A	3×32A	
Outlet characteristic	Outlet socket standard			
		IEC320 C13	IEC320 C19	
				
		NEMA 5-15R	NEMA 5-20R	
				
		DIN49440	NF C61-314	BS1363
	Outlet quantity	12, 16, 20, 24	12, 24	
	On/Off state of each outlet	LED displays		
Rated outlet voltage	110/220VAC	220VAC		
Max total load current	32A	3×32A		
Sensor port	Temperature/Humidity sensor port	3		
	Smog sensor port	1		
	Water logging sensor port	1		
	Door sensor port	2		
	Spare sensor port	1		
Mounting method	Vertical	Occupying 0U rack space		
Case color	Color	Black		

All IEC320 C13 sockets have anti-fall device.

