



DESCRIPTION

XT702G – X702GA

Prefabricated Commissioning Solution with 70 mm flushing bypass, **linear dirt resistant PICV** and **Filterball®** shut off valve with integrated strainer.

The kit is ready to be install and provides with all components required for commissioning and operation of FCU. By-pass avoids reverse flushing across the PICV.

100% factory tested against leakage.

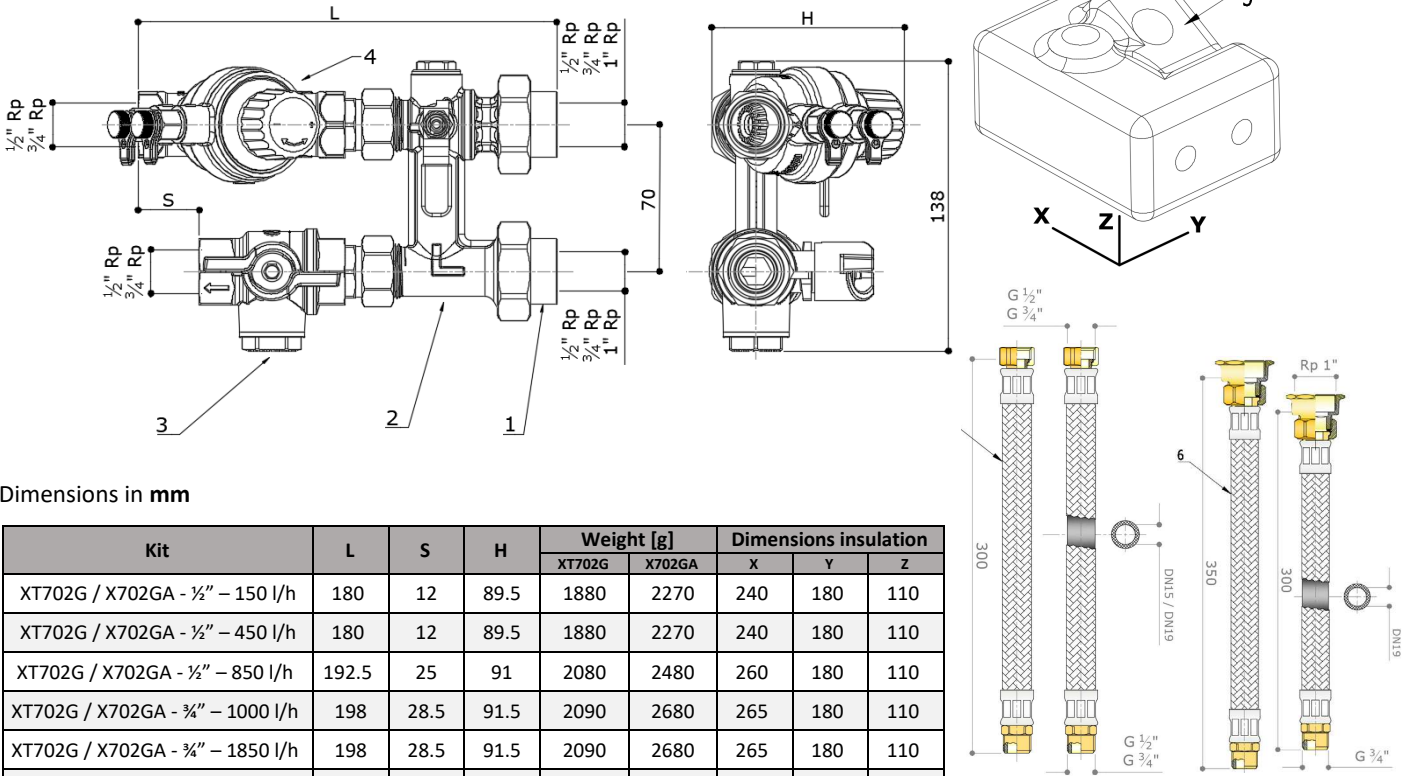
Fully maintainable **PICV** test point for commissioning and system optimization.

Filterball valve with blowout proof stem, triple sealing technology and adjustable packing gland. Strainer made of stainless steel.

Soft thermal insulation with Velcro (multiple opening-closing), UL rated, included. Thickness 20 mm.

2 x 300 mm Male x Female Flat End **flexible hoses** - 1/2" F x 1/2" M DN15 on 1/2" assemblies and 3/4" F x 3/4" M DN19 on 3/4" assemblies – or 1x300mm+1x350mm 1" F x 3/4" M DN19 on 1" assemblies, included on **X702GA** only.

DIMENSIONS



Dimensions in mm

Kit	L	S	H	Weight [g]		Dimensions insulation		
				XT702G	X702GA	X	Y	Z
XT702G / X702GA - 1/2" – 150 l/h	180	12	89.5	1880	2270	240	180	110
XT702G / X702GA - 1/2" – 450 l/h	180	12	89.5	1880	2270	240	180	110
XT702G / X702GA - 1/2" – 850 l/h	192.5	25	91	2080	2480	260	180	110
XT702G / X702GA - 3/4" – 1000 l/h	198	28.5	91.5	2090	2680	265	180	110
XT702G / X702GA - 3/4" – 1850 l/h	198	28.5	91.5	2090	2680	265	180	110
XT702G / X702GA - 1" – 2500 l/h	238	51.5	99	2470	3060	320	185	125
XT702G / X702GA - 1" – 3300 l/h	238	51.5	99	2470	3060	320	185	125

* Only for X702GA

MATERIAL LIST

#	Part number	QTY	Material
1	B90CIL 1/2" or 3/4" or 1"	2	CuZn40Pb2 CW617N
2	XT7BP	1	CuZn36Pb2As CW602N NDA
3	52F 1/2" or 3/4"	1	CuZn36Pb2As CW602N NDA
4	92VL 1/2" – 150 l/h 92L 1/2" – 450 l/h 92H 1/2" – 850 l/h 92L 3/4" – 1000 l/h	1	92H 3/4" – 1850 l/h 92L 1" – 2500 l/h 92H 1" – 3300 l/h CuZn36Pb2As CW602N NDA
5	Insulation	1	Polyethylene cross linked foam
6*	Flexible hoses	2	EPDM, CW614N, SS AISI 304

Please refers to dedicated technical specifications for further information and maintenance.

General XT technical submittal is also available for further information about XT range.

TECHNICAL FEATURES

Centre to centre [mm]	Connections	Flow range		PICV min ΔP	Assembly min ΔP	Kv by-pass	Filtering capacity
		Min [l/h]	Max [l/h]	[kPa]	[kPa]		μm
70	½" F union x ½" F	19	150	20	30	2.6	700
		42	450	35	40		
		157	850	30	35		
	¾" F union x ¾" F	169	1000	30	35		
		276	1850	35	40		
	1" F union x ¾" F*	160	2500	30	45		
173		3300	30	45			

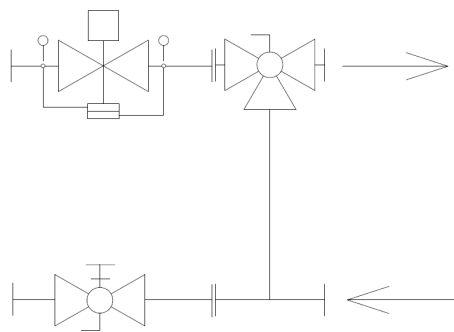
* ¾" F connection on PICV side is made through an union.

DATA

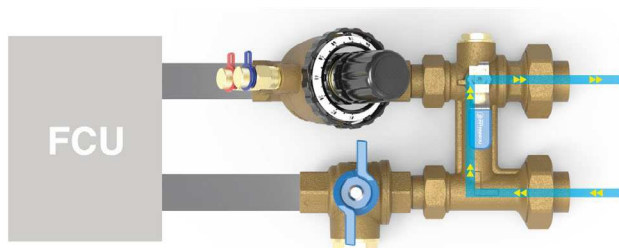
Feature	
Pressure rating	PN25 (PN16 with flexible hoses – X702GA)
Flow rate range	19 – 3300 l/h dependent on valve selection
Working temperature range [^]	-10 - +100° C (-10 - +90 °C with flexible hoses – X702GA)
Working differential pressure range	25 – 600kPa minimum depends on valve and setting
Flow control accuracy (linearity and hysteresis)	±5% till 1 bar DP, ±10% over 1 bar DP at 100% flow
Control valve characteristic	Linear
Control valve leakage rate to IEC 60534-4	Class IV
Thread types	BSP
Medium	Water or Water-Glycol 30%

[^]no frost and no steam. Under 0°C, glycol must be added. See temperature limits of actuators (dedicated technical specifications).
Water quality must comply requirements mentioned in PICV technical specification.

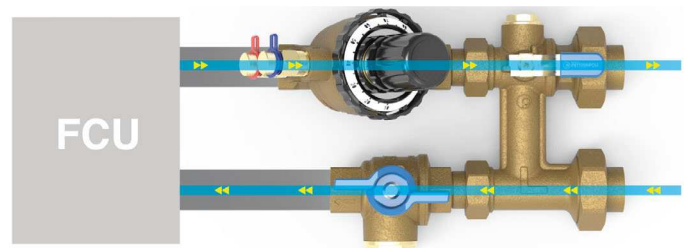
SCHEMATIC



OPERATIONS



Flushing mode



Operating mode

Pictures shown are for illustration only. They show operating modes of a similar kit.

ACTUATORS

Type	Part number	Stroke	Adaptor
24 V, 0-10 V prop., feedback	VA7483	6.3 mm*	0A7010 or 0A748X
24 V, 0-10 V prop., feedback, fail safe	VA7484	6.3 mm*	0A7010 or 0A748X
24 V, 0-10 V prop., feedback	VM000	6.5 mm*	76TE (included)
24 V, 0-10 V prop., feedback, fail safe	VM060	6.5 mm*	76TE (included)
24 V, 3 Point Floating	VA7481	6.3 mm	0A7010 or 0A748X
230 V, 3 Point Floating	VA7481	6.3 mm	0A7010 or 0A748X
24 V, 0-10 V Proportional Thermic	A544P3	4 mm	VA64 (included)
24 V, ON-OFF PWM Thermic	A544O2 or A544O4	4 mm	VA64 (included)
230 V, ON-OFF PWM Thermic	A542O2 or A542O4	4 mm	VA64 (included)
24 V, 0-10 V Proportional Thermic	A564P3	6.5 mm	VA64 (included)
24 V, ON-OFF PWM Thermic	A564O2	6.5 mm	VA64 (included)
230 V, ON-OFF PWM Thermic	A562O2	6.5 mm	VA64 (included)



VA748_



A54 series



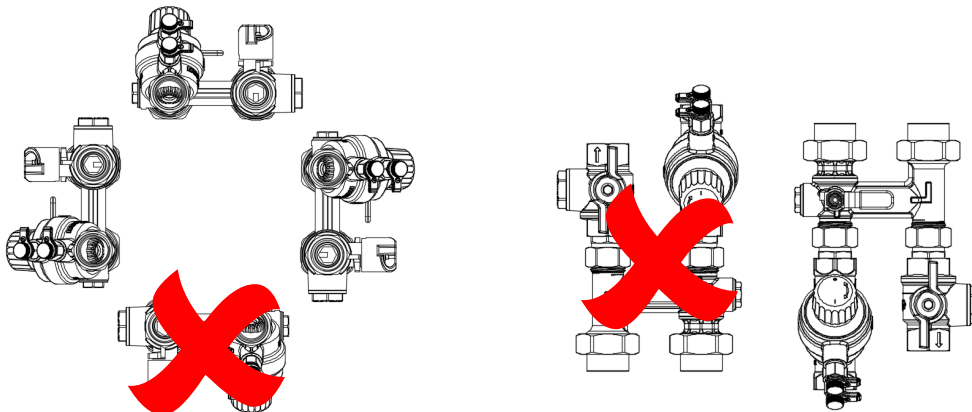
VM series

*Stroke detection system

A56 series and adaptor 0A748X (for Va748_ series) to be used on 2500 l/h and 3300 l/h kits.

INSTALLATION

The PICV can be installed in any position between vertical and horizontal for electrical safety reasons in case an actuator is mounted onto the valve. Upside down installation of the PICV must be avoided for electrical safety reasons.



Pictures shown are for illustration only.

Please refer to specific technical specifications of actuators, flexible hoses and insulation.