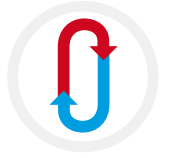


# Solar Station with controller **SST25-1E / SST25-2E**



**ErP**  
READY

APPLIES TO  
EUROPEAN  
DIRECTIVE  
FOR ENERGY  
RELATED  
PRODUCTS

The Solarstation SST25 connects up to 25 m<sup>2</sup> solar collectors to the FWSS or hot water tank. The integrated 1-circuit controller (SST25 1E) respectively 2-circuit controller (SST25 2E) works with 2 pcs. (SST25 1E) respectively 3 pcs. (SST25 2E) Pt1000-sensors which control the collector and tank temperatures, and regulates the charge pump.



## Solar station SST25-1E / SST25-2E

### Technical Data

Model	SST25-1E	SST25-2E
Dimensions W x H x D [mm]	285 x 405 x 180	330 x 570 x 230
Insulation	EPP	
Weight [kg]	6,8	8,5
Controllers	Omega-1 (1-circuit) 2 x Pt1000 sensors	Omega (2-circuit) 3 x Pt1000 sensors
Connections		
Collector	RP <sup>3</sup> / <sub>4</sub> " IG	RP <sup>3</sup> / <sub>4</sub> " IG
Tank	G1" IG	G1" AG
Medium	Water with max. 40% propylene-glycol	
Nominal width	DN 15	DN 15
Operating temperature flow [°C]	140	
Operating temperature return [°C]	120	
Operating pressure [bar]	max. 6	
Charging pump	Yonos PARA 15/7.0	
Power input [W]	36 - 49	3 - 45

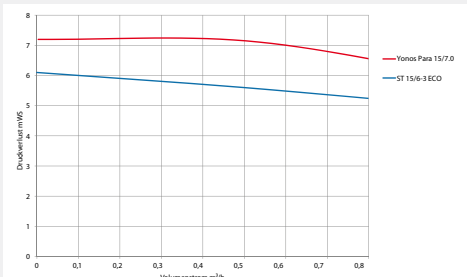


Abb.: Pressure loss curve

### Advantages:

#### Required space:

- compact construction
- minimal external piping – directly attached to tank

#### Comfort:

- plug-in delivery
- easy installation on tank
- wall fastening feasible

#### Technology:

- for up to 25 m<sup>2</sup> solar collectors
- thermally insulated model
- multi-functional ball valves with integrated gravitational brakes
- flow rate adjustable
- flow and return temperature indicator
- manometer (range 10 bar)
- solar safety valve (reaction pressure 6 bar)
- flow indicator with rinse and stop function
- kfe-valve for easy filling, rinsing and draining

#### Special advantages:

- 1-circuit solar controller with system status display (SST25-1E)
- 2-circuit solar controller with system status display (SST25-2E)
- Heat quantity measurement (optional with Grundfos Direct Sensor)
- air-jet with manual deaeration-nipple (SST25-2E)

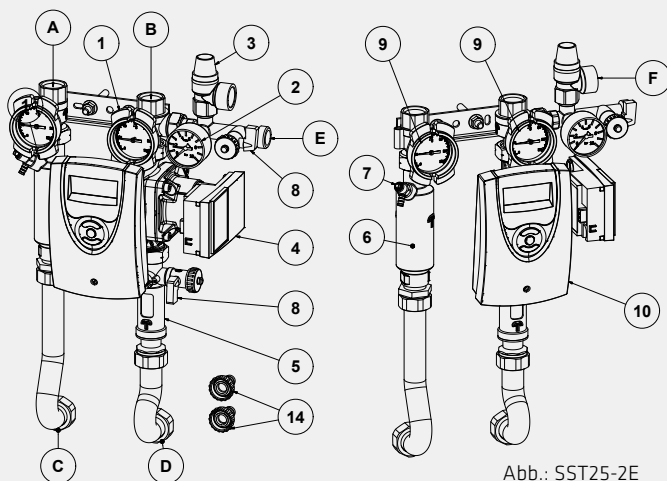


Abb.: SST25-2E

- |  |                              |
|--|------------------------------|
| 1 Ball valves with integrated gravity brake              | 10 Controller                |
| 2 Manometer  | 14 Hose nozzle for KFE Valve |
| 3 Solar safety valve (6 bar)                             | Connections                  |
| 4 Charging pump  | A Collector feed             |
| 5 Flow meter 1-13 l/min with rinsing / shut-off function | B Tank feed                  |
| 6 Air-jet  | C Tank return                |
| 7 Manual bleeding nipple                                 | D Tank return                |
| 8 KFE-Valve  | E Membrane expansion vessel  |
| 9 Dial thermometer                                       | F Collecting vessel          |

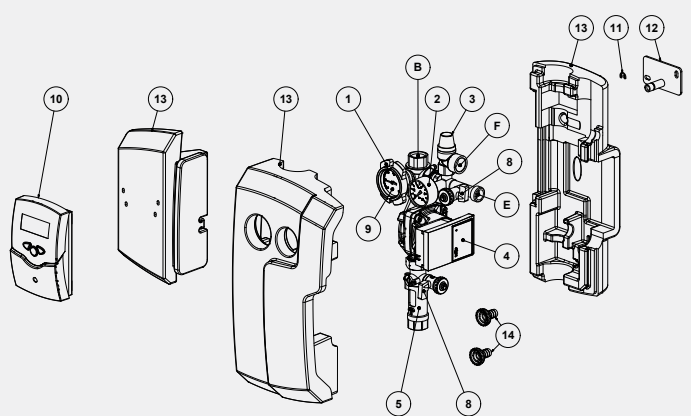


Abb.: SST25-1E

- |  |                              |
|--|------------------------------|
| 1 Ball valve with integrated gravity brake | 11 Safety spring             |
| 2 Manometer                                | 12 Mounting plate            |
| 3 Solar safety valve (6 bar)               | 13 Insulation                |
| 4 Charging pump                            | 14 Hose nozzle for KFE-Valve |
| 5 Flow meter                               | Connections                  |
| 8 KFE-Valve                                | B Collector return           |
| 9 Dial thermometer                         | D Tank return                |
| 10 Controller                              | E Membrane expansion vessel  |
|  | F Collecting vessel          |