

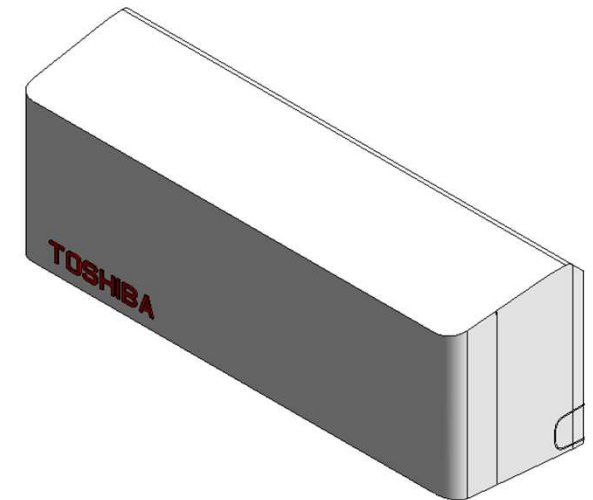
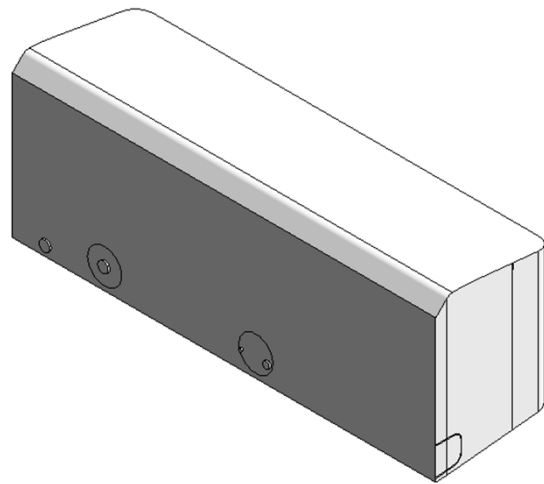
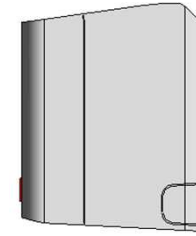
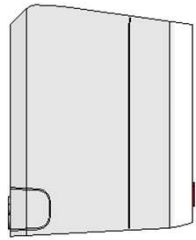
An abstract graphic on the left side of the slide, composed of numerous overlapping, semi-transparent blue rectangular and polygonal shapes. These shapes are arranged in a way that creates a sense of depth and perspective, appearing to recede towards a bright white light source at the center of the composition. The colors range from light sky blue to deep navy blue.

HCL

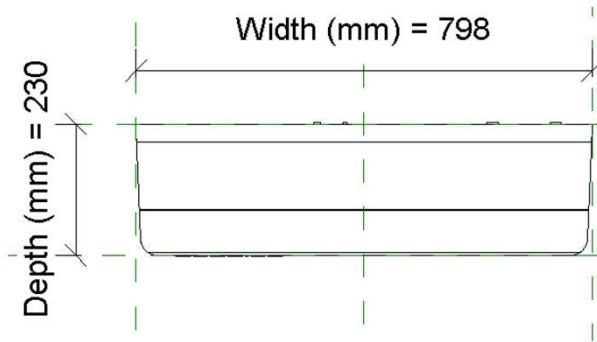
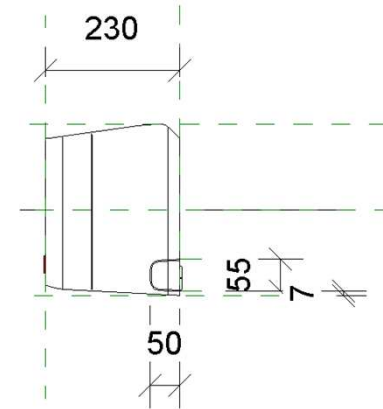
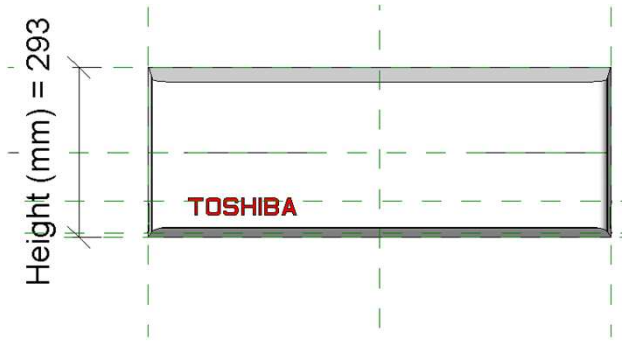
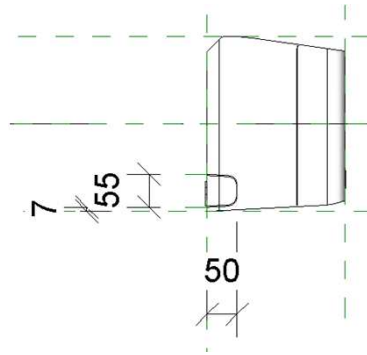
RAS_J2KVG_05-18

20-02-2020

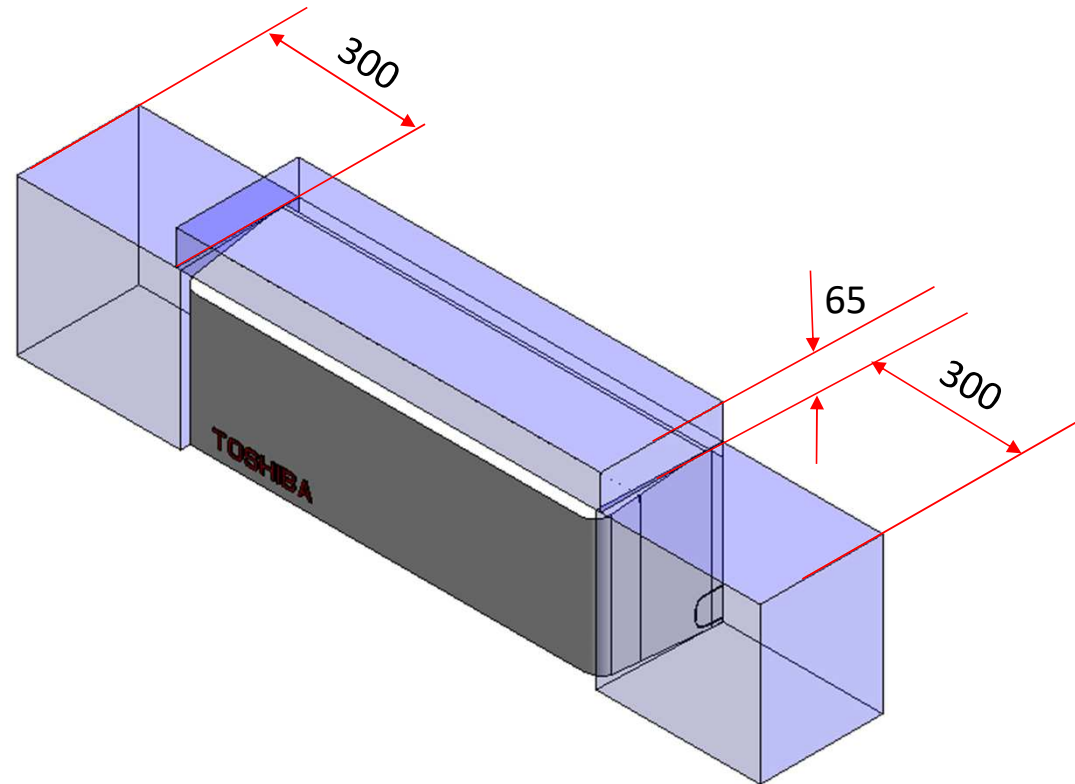
RAS_J2KVG_05-18



RAS_J2KVG_05-18

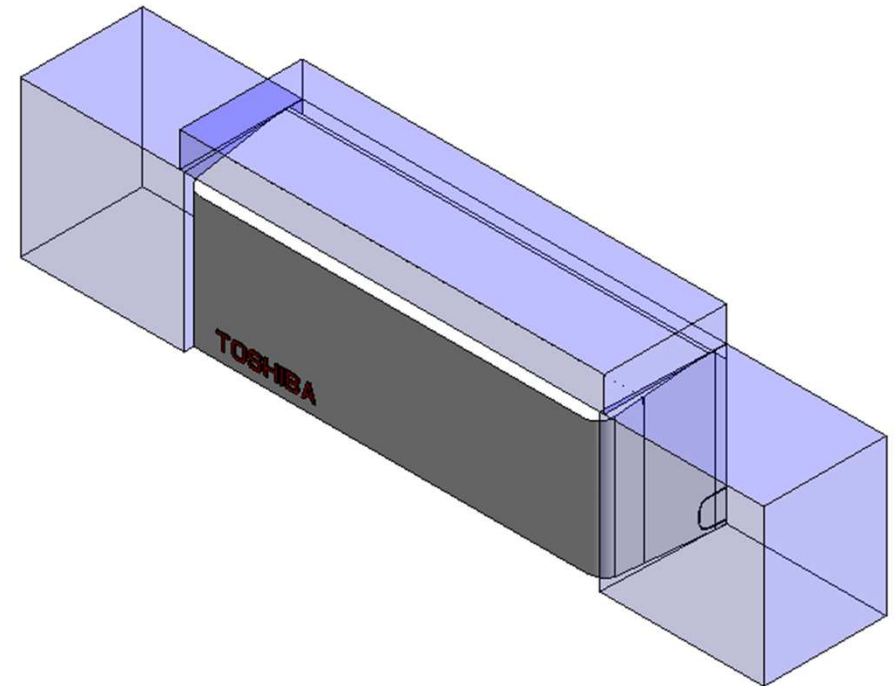


RAS_J2KVG_05-18_Service Area



RAS_J2KVG_05-18

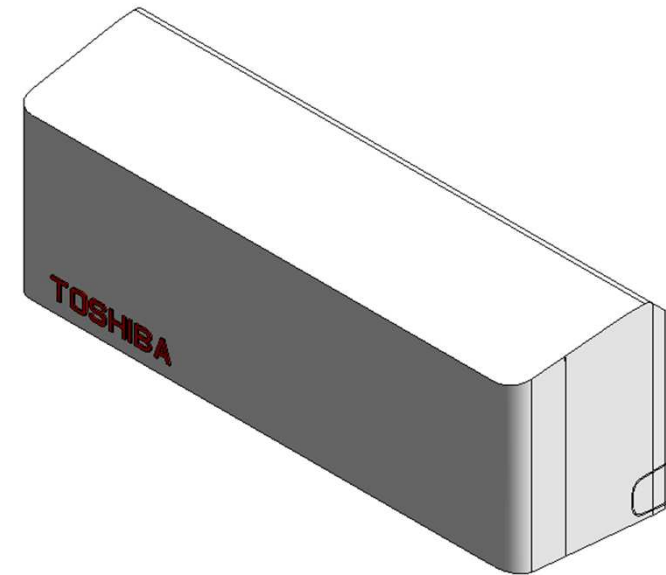
Visibility	
Service Area (default)	<input checked="" type="checkbox"/>
Top Clearance (mm) (default)	65.0
Left Side Clearance (mm) (default)	300.0
Right Side Clearance (mm) (default)	300.0



Service Clearance ON

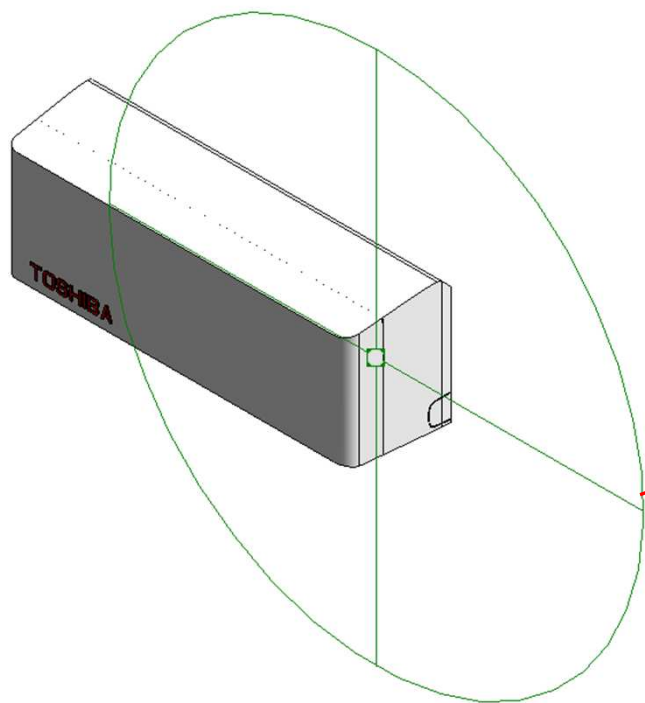
RAS_J2KVG_05-18

Visibility	
Service Area (default)	<input type="checkbox"/>
Top Clearance (mm) (default)	65.0
Left Side Clearance (mm) (default)	300.0
Right Side Clearance (mm) (default)	300.0



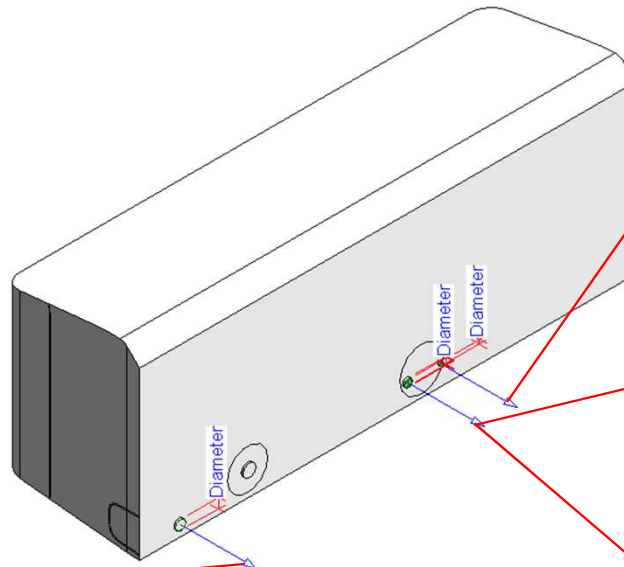
Service Clearance OFF

Electrical Connector



Properties	
R	
Connector Element (1) Edit Type	
Electrical - Loads	
System Type	Power - Unbalanced
Number of Poles	1
Power Factor State	Lagging
Load Classification	Other
Load Sub-Classification Motor	<input type="checkbox"/>
Voltage	0.00 V
Apparent Load Phase 1	0.00 VA
Apparent Load Phase 2	0.00 VA
Apparent Load Phase 3	0.00 VA
Power Factor	1.000000
Identity Data	
Utility	<input type="checkbox"/>
Connector Description	ELECTRICAL CONNECTOR

Pipe Connectors



Properties	
Connector Element (1) Edit Type	
Dimensions	
Diameter	16.0
Mechanical	
K Coefficient	0.000000
Flow Factor	0.000000
Flow Configuration	Calculated
Flow Direction	Out
Loss Method	Not Defined
Allow Slope Adjustments	<input type="checkbox"/>
System Classification	Vent
Mechanical - Flow	
Flow	0.00 L/s
Pressure Drop	0.00 Pa
Identity Data	
Utility	<input type="checkbox"/>
Connector Description	DRAIN PORT

Properties	
Connector Element (1) Edit Type	
Dimensions	
Diameter	6.4
Mechanical	
K Coefficient	0.000000
Flow Factor	0.000000
Flow Configuration	Calculated
Flow Direction	In
Loss Method	Not Defined
Allow Slope Adjustments	<input type="checkbox"/>
System Classification	Hydronic Supply
Mechanical - Flow	
Flow	0.00 L/s
Pressure Drop	0.00 Pa
Identity Data	
Utility	<input type="checkbox"/>
Connector Description	Refrigerant Pipe Connecting Port-Liquid (dia 6.4 mm)

Properties	
Connector Element (1) Edit Type	
Dimensions	
Diameter	12.7
Mechanical	
K Coefficient	0.000000
Flow Factor	0.000000
Flow Configuration	Calculated
Flow Direction	Out
Loss Method	Not Defined
Allow Slope Adjustments	<input type="checkbox"/>
System Classification	Hydronic Return
Mechanical - Flow	
Flow	0.00 L/s
Pressure Drop	0.00 Pa
Identity Data	
Utility	<input type="checkbox"/>
Connector Description	Refrigerant Pipe Connecting Port-Gas (dia 12.7 mm)

Properties	
Connector Element (1) Edit Type	
Dimensions	
Diameter	9.5
Mechanical	
K Coefficient	0.000000
Flow Factor	0.000000
Flow Configuration	Calculated
Flow Direction	Out
Loss Method	Not Defined
Allow Slope Adjustments	<input type="checkbox"/>
System Classification	Hydronic Return
Mechanical - Flow	
Flow	0.00 L/s
Pressure Drop	0.00 Pa
Identity Data	
Utility	<input type="checkbox"/>
Connector Description	Refrigerant Pipe Connecting Port-Gas (dia 9.5 mm)

RAS-B05J2KVG-E

Family Types

Type name: RAS-B05J2KVG-E

Search parameters

Parameter	Value	Formula
Materials and Finishes		
Red	Colour - RGB 250 000 000	=
White	Colour - RGB 255 255 255	=
Electrical		
MOCp (A)	6.5	=
MCA (A)	-	=
Running current-Cooling	0.19 - 0.17	=
Power consumption-Cooling	25	=
Running current-Heating	0.19 - 0.17	=
Power consumption-Heating	25	=
Frequency (Hz)	50Hz	=
Voltage (V)	220-240V	=
Starting current	5	=
Dimensions		
Height (mm)	293.0	=
Width (mm)	798.0	=
Depth (mm)	230.0	=
Piping diameter Gas (mm)	9.5	=
Piping diameter Liquid (mm)	6.4	=
Drain pipe(mm)	16.0	=
Duct diameters(mm)	-	=
Mechanical - Flow		
Static pressure	-	=
Sound pressure dB(A) - Cooling/Heating - High	37 / 37	=
Sound pressure dB(A) - Cooling/Heating - Mid +	-	=
Sound pressure dB(A) - Cooling/Heating - Mid	30 / 30	=
Sound pressure dB(A) - Cooling/Heating -Low +	-	=
Sound pressure dB(A) - Cooling/Heating- Low	22 / 22	=
Airflow m3/h - Cooling/Heating	510 / 522	=
Mechanical - Loads		
Rated Capacity kW - Cooling/Heating	1.5 / 2.0	=
Rated Power Consumption kW- Cooling/Heating	0.370 / 0.470	=
Rated efficiency - EER / COP	4.05 / 4.26	=
Energy Analysis		
Energy class-Cooling/Heating	A++ / A+	=
Seasonal Efficiency SEER / SCOP	6.30 / 4.26	=
Pdesign-Cooling/Heating	1.5 / 1.6 (Tbiv= -7degC)	=

Family Types

Type name: RAS-B05J2KVG-E

Search parameters

Parameter	Value	Formula
Visibility		
Service Area (default)	<input type="checkbox"/>	=
Top Clearance (mm) (default)	65.0	=
Left Side Clearance (mm) (default)	300.0	=
Right Side Clearance (mm) (default)	300.0	=
Other		
Compressor detail (Type)	-	=
Compressor detail (Motor output W)	-	=
Operation range degC - Cooling	21 - 32	=
Operation range degC - Heating	0 - 28	=
Refrigerant information	R32	=
Weight (Kg)	9	=
Identity Data		
Article Description	R32 SEIYA	=
Article Type	RAS-B05J2KVG-E	=
Base Family Version		=
CB-NL Class		=
Content Supplier URL	www.hcltech.com	=
Copyright	©Toshiba / HCL	= "©Toshiba / HCL"
Custom	<input checked="" type="checkbox"/>	=
EMCS	4	=
ETIM Article Class	EC001213	=
Family Version		=
GLN		=
GTIN		=
Internal Art. No.		=
MEPcontent Class	HEATPUMP	= "HEATPUMP"
Manufacturer Art. No.	RAS-B05J2KVG-E	=
Manufacturer URL	https://www.toshiba-carrier.co.jp/global/	=
Product Line	TCTC	= "TCTC"
Revit Version	2017	= "2017"
Stabu Code		=
Type Image		=
Keynote		=
Model	RAS-B05J2KVG-E	=
Manufacturer	Toshiba	= "Toshiba"
Type Comments		=
URL	https://www.toshiba-carrier.co.jp/global/	=
Description	R32 SEIYA	=
Assembly Code		=
Cost		=
Watermarked By		=
Wholesaler		=
Wholesaler Art. No.		=

RAS-B07J2KVG-E

Family Types

Type name: RAS-B07J2KVG-E

Search parameters

Parameter	Value	Formula
Materials and Finishes		
Red	Colour - RGB 250 000 000	=
White	Colour - RGB 255 255 255	=
Electrical		
MOCP (A)	7	=
MCA (A)	-	=
Running current-Cooling	0.22 - 0.20	=
Power consumption-Cooling	30	=
Running current-Heating	0.22 - 0.20	=
Power consumption-Heating	30	=
Frequency (Hz)	50Hz	=
Voltage (V)	220-240V	=
Starting current	5.4	=
Dimensions		
Height (mm)	293.0	=
Width (mm)	798.0	=
Depth (mm)	230.0	=
Piping diameter Gas (mm)	9.5	=
Piping diameter Liquid (mm)	6.4	=
Drain pipe(mm)	16.0	=
Duct diameters(mm)	-	=
Mechanical - Flow		
Static pressure	-	=
Sound pressure dB(A) - Cooling/Heating - High	38 / 38	=
Sound pressure dB(A) - Cooling/Heating - Mid +	-	=
Sound pressure dB(A) - Cooling/Heating - Mid	31 / 31	=
Sound pressure dB(A) - Cooling/Heating -Low +	-	=
Sound pressure dB(A) - Cooling/Heating -Low	23 / 23	=
Airflow m3/h - Cooling/Heating	522 / 535	=
Mechanical - Loads		
Rated Capacity kW - Cooling/Heating	2.0 / 2.5	=
Rated Power Consumption kW- Cooling/Heating	0.530 / 0.640	=
Rated efficiency - EER / COP	3.77 / 3.91	=
Energy Analysis		
Energy class-Cooling/Heating	A++ / A+	=
Seasonal Efficiency SEER / SCOP	6.30 / 4.00	=
Pdesigh-Cooling/Heating	2.0 / 2.2 (Tbiv= -7degC)	=

Family Types

Type name: RAS-B07J2KVG-E

Search parameters

Parameter	Value	Formula
Visibility		
Service Area (default)	<input type="checkbox"/>	=
Top Clearance (mm) (default)	65.0	=
Left Side Clearance (mm) (default)	300.0	=
Right Side Clearance (mm) (default)	300.0	=
Other		
Compressor detail (Type)	-	=
Compressor detail (Motor output W)	-	=
OpARATION range degC - Cooling	21 - 32	=
OpARATION range degC - Heating	0 - 28	=
Refrigerant information	R32	=
Weight (Kg)	9	=
Identity Data		
Article Description	R32 SEIYA	=
Article Type	RAS-B07J2KVG-E	=
Base Family Version		=
CB-NL Class		=
Content Supplier URL	www.hcltech.com	=
Copyright	©Toshiba / HCL	= "©Toshiba / HCL"
Custom	<input checked="" type="checkbox"/>	=
EMCS	4	=
ETIM Article Class	EC001213	=
Family Version		=
GLN		=
GTIN		=
Internal Art. No.		=
MEPcontent Class	HEATPUMP	= "HEATPUMP"
Manufacturer Art. No.	RAS-B07J2KVG-E	=
Manufacturer URL	https://www.toshiba-carrier.co.jp/global/	=
Product Line	TCTC	= "TCTC"
Revit Version	2017	= "2017"
Stabu Code		=
Type Image		=
Keynote		=
Model	RAS-B07J2KVG-E	=
Manufacturer	Toshiba	= "Toshiba"
Type Comments		=
URL	https://www.toshiba-carrier.co.jp/global/	=
Description	R32 SEIYA	=
Assembly Code		=
Cost		=
Watermarked By		=
Wholesaler		=
Wholesaler Art. No.		=

RAS-B10J2KVG-E

Family Types		
Type name:	RAS-B10J2KVG-E	
Search parameters		
Parameter	Value	Formula
Materials and Finishes		
Red	Colour - RGB 250 000 000	=
White	Colour - RGB 255 255 255	=
Electrical		
MOCP (A)	9	=
MCA (A)	-	=
Running current-Cooling	0.25 - 0.23	=
Power consumption-Cooling	35	=
Running current-Heating	0.25 - 0.23	=
Power consumption-Heating	35	=
Frequency (Hz)	50Hz	=
Voltage (V)	220-240V	=
Starting current	7.2	=
Dimensions		
Height (mm)	293.0	=
Width (mm)	798.0	=
Depth (mm)	230.0	=
Piping diameter Gas (mm)	9.5	=
Piping diameter Liquid (mm)	6.4	=
Drain pipe(mm)	16.0	=
Duct diameters(mm)	-	=
Mechanical - Flow		
Static pressure		=
Sound pressure dB(A) - Cooling/Heating - High	39 / 39	=
Sound pressure dB(A) - Cooling/Heating - Mid +	-	=
Sound pressure dB(A) - Cooling/Heating - Mid	32 / 32	=
Sound pressure dB(A) - Cooling/Heating -Low +	-	=
Sound pressure dB(A) - Cooling/Heating -Low	24 / 24	=
Airflow m3/h - Cooling/Heating	540 / 552	=
Mechanical - Loads		
Rated Capacity kW - Cooling/Heating	2.5 / 3.2	=
Rated Power Consumption kW- Cooling/Heating	0.770 / 0.860	=
Rated efficiency - EER / COP	3.25 / 3.72	=
Energy Analysis		
Energy class-Cooling/Heating	A++ / A+	=
Seasonal Efficiency SEER / SCOP	6.10 / 4.00	=
Pdesign-Cooling/Heating	2.5 / 2.4 (Tbiv= -7degC)	=

Family Types		
Type name:	RAS-B10J2KVG-E	
Search parameters		
Parameter	Value	Formula
Visibility		
Service Area (default)	<input type="checkbox"/>	=
Top Clearance (mm) (default)	65.0	=
Left Side Clearance (mm) (default)	300.0	=
Right Side Clearance (mm) (default)	300.0	=
Other		
Compressor detail (Type)	-	=
Compressor detail (Motor output W)	-	=
Oparation range degC - Cooling	21 - 32	=
Oparation range degC - Heating	0 - 28	=
Refrigerant information	R32	=
Weight (Kg)	9	=
Identity Data		
Article Description	R32 SEIYA	=
Article Type	RAS-B10J2KVG-E	=
Base Family Version		=
CB-NL Class		=
Content Supplier URL	www.hcltech.com	=
Copyright	©Toshiba / HCL	"©Toshiba / HCL"
Custom	<input checked="" type="checkbox"/>	=
EMCS	4	=
ETIM Article Class	EC001213	=
Family Version		=
GLN		=
GTIN		=
Internal Art. No.		=
MEPcontent Class	HEATPUMP	"HEATPUMP"
Manufacturer Art. No.	RAS-B10J2KVG-E	=
Manufacturer URL	https://www.toshiba-carrier.co.jp/global/	=
Product Line	TCTC	"TCTC"
Revit Version	2017	"2017"
Stabu Code		=
Type Image		=
Keynote		=
Model	RAS-B10J2KVG-E	=
Manufacturer	Toshiba	"Toshiba"
Type Comments		=
URL	https://www.toshiba-carrier.co.jp/global/	=
Description	R32 SEIYA	=
Assembly Code		=
Cost		=
Watermarked By		=
Wholesaler		=
Wholesaler Art. No.		=

RAS-B13J2KVG-E

Family Types

Type name: RAS-B13J2KVG-E

Search parameters

Parameter	Value	Formula
Materials and Finishes		
Red	Colour - RGB 250 000 000	=
White	Colour - RGB 255 255 255	=
Electrical		
MOCP (A)	9.5	=
MCA (A)	-	=
Running current-Cooling	0.28 - 0.26	=
Power consumption-Cooling	40	=
Running current-Heating	0.28 - 0.26	=
Power consumption-Heating	40	=
Frequency (Hz)	50Hz	=
Voltage (V)	220-240V	=
Starting current	7.4	=
Dimensions		
Height (mm)	293.0	=
Width (mm)	798.0	=
Depth (mm)	230.0	=
Piping diameter Gas (mm)	9.5	=
Piping diameter Liquid (mm)	6.4	=
Drain pipe(mm)	16.0	=
Duct diameters(mm)	-	=
Mechanical - Flow		
Static pressure	-	=
Sound pressure dB(A) - Cooling/Heating - High	41 / 42	=
Sound pressure dB(A) - Cooling/Heating - Mid +	-	=
Sound pressure dB(A) - Cooling/Heating - Mid	33 / 34	=
Sound pressure dB(A) - Cooling/Heating -Low +	-	=
Sound pressure dB(A) - Cooling/Heating- Low	24 / 24	=
Airflow m3/h - Cooling/Heating	600 / 618	=
Mechanical - Loads		
Rated Capacity kW - Cooling/Heating	3.3 / 3.6	=
Rated Power Consumption kW- Cooling/Heating	1.10 / 0.920	=
Rated efficiency - EER / COP	3.00 / 3.91	=
Energy Analysis		
Energy class-Cooling/Heating	A++ / A+	=
Seasonal Efficiency SEER / SCOP	6.10 / 4.00	=
Pdesignh-Cooling/Heating	3.3 / 2.8 (Tbiv= -7degC)	=

Family Types

Type name: RAS-B13J2KVG-E

Search parameters

Parameter	Value	Formula
Visibility		
Service Area (default)	<input type="checkbox"/>	=
Top Clearance (mm) (default)	65.0	=
Left Side Clearance (mm) (default)	300.0	=
Right Side Clearance (mm) (default)	300.0	=
Other		
Compressor detail (Type)	-	=
Compressor detail (Motor output W)	-	=
Operation range degC - Cooling	21 - 32	=
Operation range degC - Heating	0 - 28	=
Refrigerant information	R32	=
Weight (Kg)	9	=
Identity Data		
Article Description	R32 SEIYA	=
Article Type	RAS-B13J2KVG-E	=
Base Family Version		=
CB-NL Class		=
Content Supplier URL	www.hcltech.com	=
Copyright	©Toshiba / HCL	"©Toshiba / HCL"
Custom	<input checked="" type="checkbox"/>	=
EMCS	4	=
ETIM Article Class	EC001213	=
Family Version		=
GLN		=
GTIN		=
Internal Art. No.		=
MEPcontent Class	HEATPUMP	"HEATPUMP"
Manufacturer Art. No.	RAS-B13J2KVG-E	=
Manufacturer URL	https://www.toshiba-carrier.co.jp/global/	=
Product Line	TCTC	"TCTC"
Revit Version	2017	"2017"
Stabu Code		=
Type Image		=
Keynote		=
Model	RAS-B13J2KVG-E	=
Manufacturer	Toshiba	"Toshiba"
Type Comments		=
URL	https://www.toshiba-carrier.co.jp/global/	=
Description	R32 SEIYA	=
Assembly Code		=
Cost		=
Watermarked By		=
Wholesaler		=
Wholesaler Art. No.		=

RAS-B16J2KVG-E

Family Types		
Type name:	RAS-B16J2KVG-E	
Search parameters		
Parameter	Value	Formula
Materials and Finishes		
Red	Colour - RGB 250 000 000	=
White	Colour - RGB 255 255 255	=
Electrical		
MOCP (A)	11.5	=
MCA (A)	-	=
Running current-Cooling	0.31 - 0.29	=
Power consumption-Cooling	45	=
Running current-Heating	0.31 - 0.29	=
Power consumption-Heating	45	=
Frequency (Hz)	50Hz	=
Voltage (V)	220-240V	=
Starting current	9	=
Dimensions		
Height (mm)	293.0	=
Width (mm)	798.0	=
Depth (mm)	230.0	=
Piping diameter Gas (mm)	12.7	=
Piping diameter Liquid (mm)	6.4	=
Drain pipe(mm)	16.0	=
Duct diameters(mm)	-	=
Mechanical - Flow		
Static pressure	-	=
Sound pressure dB(A) - Cooling/Heating - High	43 / 43	=
Sound pressure dB(A) - Cooling/Heating - Mid +	-	=
Sound pressure dB(A) - Cooling/Heating - Mid	35 / 35	=
Sound pressure dB(A) - Cooling/Heating - Low +	-	=
Sound pressure dB(A) - Cooling/Heating - Low	25 / 25	=
Airflow m3/h - Cooling/Heating	750 / 768	=
Mechanical - Loads		
Rated Capacity kW - Cooling/Heating	4.2 / 5.0	=
Rated Power Consumption kW- Cooling/Heating	1.40 / 1.40	=
Rated efficiency - EER / COP	3.00 / 3.57	=
Energy Analysis		
Energy class-Cooling/Heating	A++ / A+	=
Seasonal Efficiency SEER / SCOP	6.10 / 4.00	=
Pdesign-Cooling/Heating	4.2 / 3.6 (Tbiv= -7degC)	=

Family Types		
Type name:	RAS-B16J2KVG-E	
Search parameters		
Parameter	Value	Formula
Visibility		
Service Area (default)	<input type="checkbox"/>	=
Top Clearance (mm) (default)	65.0	=
Left Side Clearance (mm) (default)	300.0	=
Right Side Clearance (mm) (default)	300.0	=
Other		
Compressor detail (Type)	-	=
Compressor detail (Motor output W)	-	=
Operation range degC - Cooling	21 - 32	=
Operation range degC - Heating	0 - 28	=
Refrigerant information	R32	=
Weight (Kg)	10	=
Identity Data		
Article Description	R32 SEIYA	=
Article Type	RAS-B16J2KVG-E	=
Base Family Version		=
CB-NL Class		=
Content Supplier URL	www.hcltech.com	=
Copyright	© Toshiba / HCL	"©Toshiba / HCL"
Custom	<input checked="" type="checkbox"/>	=
EMCS	4	=
ETIM Article Class	EC001213	=
Family Version		=
GLN		=
GTIN		=
Internal Art. No.		=
MEPcontent Class	HEATPUMP	"HEATPUMP"
Manufacturer Art. No.	RAS-B16J2KVG-E	=
Manufacturer URL	https://www.toshiba-carrier.co.jp/global/	=
Product Line	TCTC	"TCTC"
Revit Version	2017	"2017"
Stabu Code		=
Type Image		=
Keynote		=
Model	RAS-B16J2KVG-E	=
Manufacturer	Toshiba	"Toshiba"
Type Comments		=
URL	https://www.toshiba-carrier.co.jp/global/	=
Description	R32 SEIYA	=
Assembly Code		=
Cost		=
Watermarked By		=
Wholesaler		=
Wholesaler Art. No.		=

RAS-18J2KVG-E

Family Types

Type name: RAS-18J2KVG-E

Search parameters

Parameter	Value	Formula
Materials and Finishes		
Red	Colour - RGB 250 000 000	=
White	Colour - RGB 255 255 255	=
Electrical		
MOCP (A)	12	=
MCA (A)	-	=
Running current-Cooling	0.34 - 0.32	=
Power consumption-Cooling	50	=
Running current-Heating	0.34 - 0.32	=
Power consumption-Heating	50	=
Frequency (Hz)	50Hz	=
Voltage (V)	220-240V	=
Starting current	9.3	=
Dimensions		
Height (mm)	293.0	=
Width (mm)	798.0	=
Depth (mm)	230.0	=
Piping diameter Gas (mm)	12.7	=
Piping diameter Liquid (mm)	6.4	=
Drain pipe(mm)	16.0	=
Duct diameters(mm)	-	=
Mechanical - Flow		
Static pressure	-	=
Sound pressure dB(A) - Cooling/Heating - High	47 / 48	=
Sound pressure dB(A) - Cooling/Heating - Mid +		=
Sound pressure dB(A) - Cooling/Heating - Mid	40 / 40	=
Sound pressure dB(A) - Cooling/Heating -Low +		=
Sound pressure dB(A) - Cooling/Heating - Low	32 / 32	=
Airflow m3/h - Cooling/Heating	798 / 840	=
Mechanical - Loads		
Rated Capacity kW - Cooling/Heating	5.0 / 5.4	=
Rated Power Consumption kW- Cooling/Heating	1.55 / 1.60	=
Rated efficiency - EER / COP	3.23 / 3.38	=
Energy Analysis		
Energy class-Cooling/Heating	A++ / A+	=
Seasonal Efficiency SEER / SCOP	6.30 / 4.00	=
Pdesign-Cooling/Heating	5.0 / 3.8 (Tbiv= -7degC)	=

Family Types

Type name: RAS-18J2KVG-E

Search parameters

Parameter	Value	Formula
Visibility		
Service Area (default)	<input type="checkbox"/>	=
Top Clearance (mm) (default)	65.0	=
Left Side Clearance (mm) (default)	300.0	=
Right Side Clearance (mm) (default)	300.0	=
Other		
Compressor detail (Type)	-	=
Compressor detail (Motor output W)	-	=
Operation range degC - Cooling	21 - 32	=
Operation range degC - Heating	0 - 28	=
Refrigerant information	R32	=
Weight (Kg)	10	=
Identity Data		
Article Description	R32 SEIYA	=
Article Type	RAS-18J2KVG-E	=
Base Family Version		=
CB-NL Class		=
Content Supplier URL	www.hcltech.com	=
Copyright	© Toshiba / HCL	"©Toshiba / HCL"
Custom	<input checked="" type="checkbox"/>	=
EMCS	4	=
ETIM Article Class	EC001213	=
Family Version		=
GLN		=
GTIN		=
Internal Art. No.		=
MEPcontent Class	HEATPUMP	"HEATPUMP"
Manufacturer Art. No.	RAS-18J2KVG-E	=
Manufacturer URL	https://www.toshiba-carrier.co.jp/global/	=
Product Line	TCTC	"TCTC"
Revit Version	2017	"2017"
Stabu Code		=
Type Image		=
Keynote		=
Model	RAS-18J2KVG-E	=
Manufacturer	Toshiba	"Toshiba"
Type Comments		=
URL	https://www.toshiba-carrier.co.jp/global/	=
Description	R32 SEIYA	=
Assembly Code		=
Cost		=
Watermarked By		=
Wholesaler		=
Wholesaler Art. No.		=



Thank You