

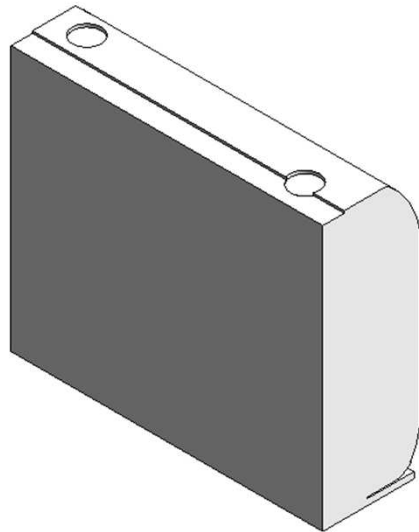
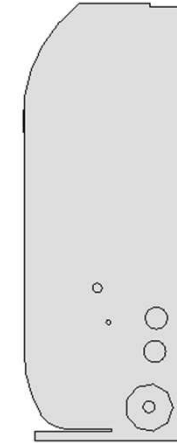
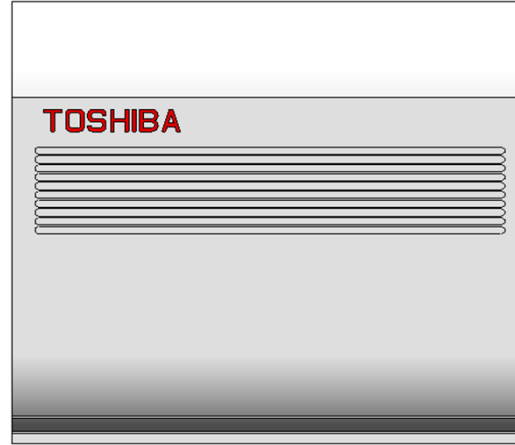
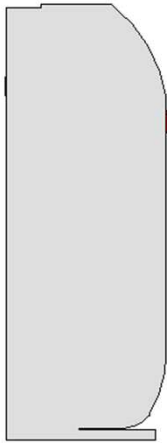
An abstract graphic on the left side of the slide, composed of numerous overlapping, semi-transparent blue rectangular and polygonal shapes. These shapes are arranged in a way that creates a sense of depth and perspective, appearing to recede into the distance towards a bright white light source at the center of the composition. The colors range from light sky blue to deep navy blue.

HCL

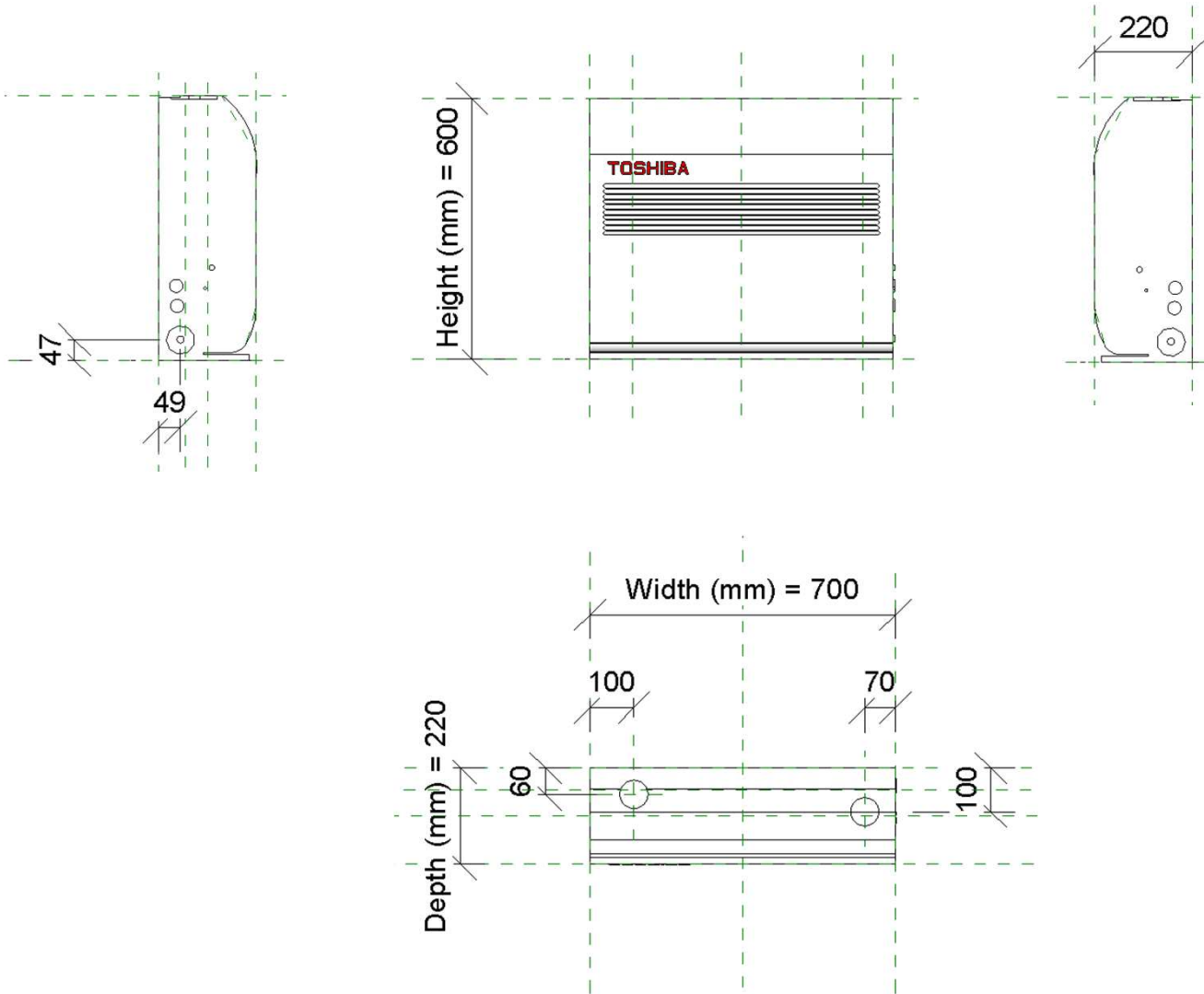
RAS_U2FVG_10-18

20-02-2020

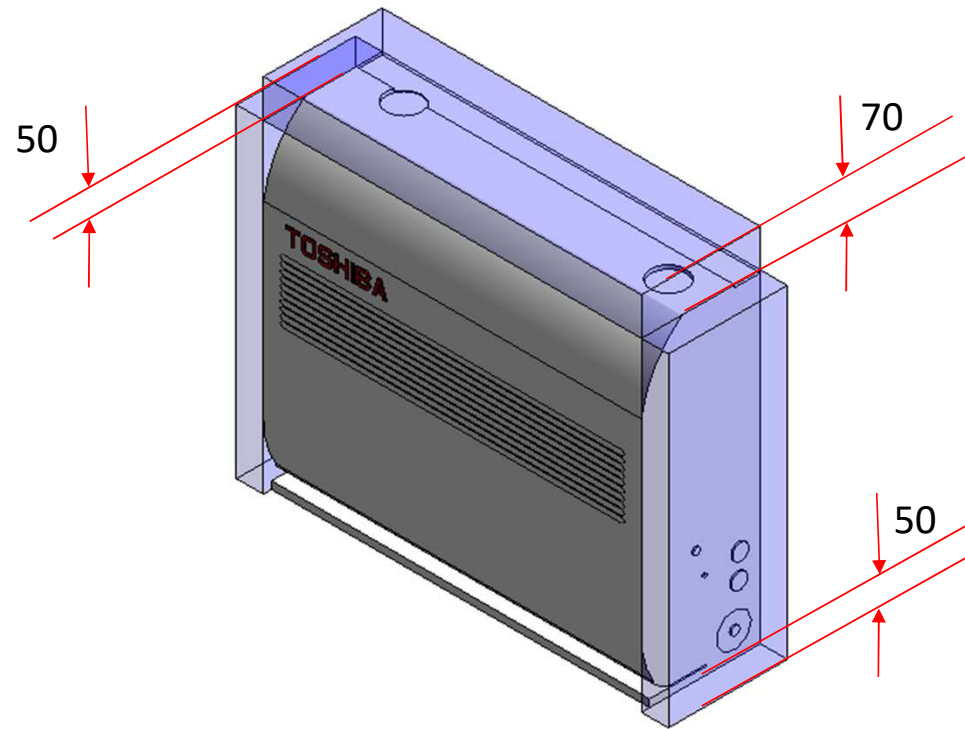
RAS_U2FVG_10-18



RAS_U2FVG_10-18

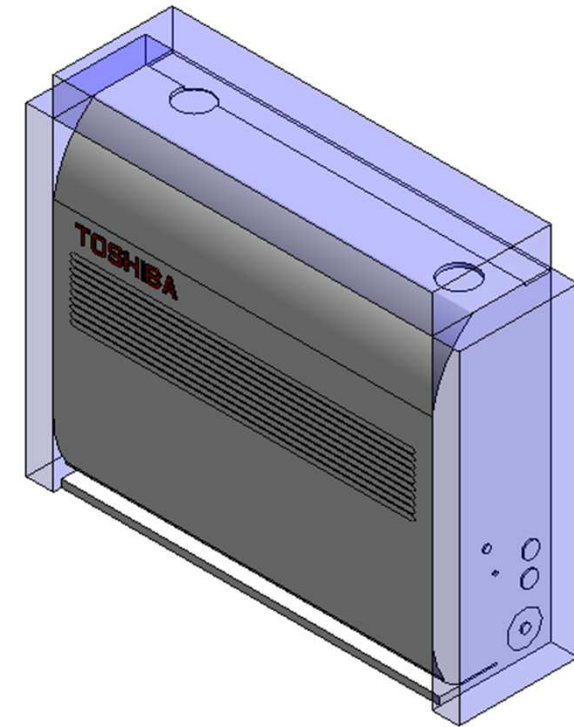


RAS_U2FVG_10-18_Service Area



RAS_U2FVG_10-18

Visibility	
SERVICE AREA (default)	<input checked="" type="checkbox"/>
Left Side Clearance (mm) (default)	50.0
Right Side Clearance (mm) (default)	50.0
Top Clearance (mm) (default)	70.0

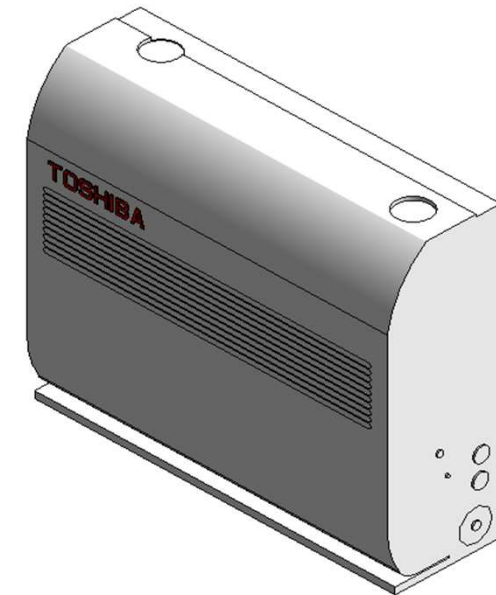


Service Clearance ON

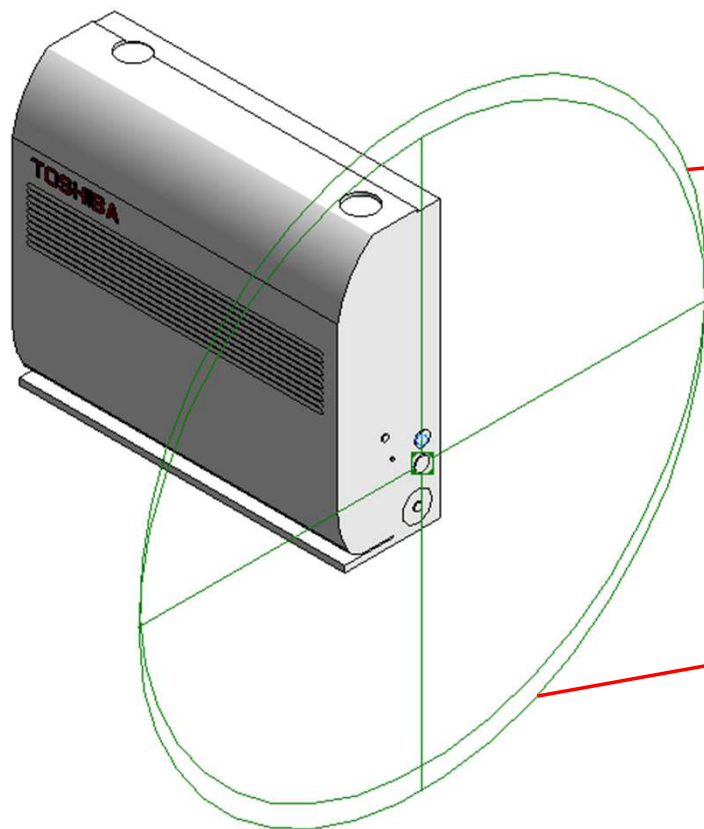
RAS_U2FVG_10-18

Visibility	
SERVICE AREA (default)	<input type="checkbox"/>
Left Side Clearance (mm) (default)	50.0
Right Side Clearance (mm) (default)	50.0
Top Clearance (mm) (default)	70.0

Service Clearance OFF



Electrical Connector

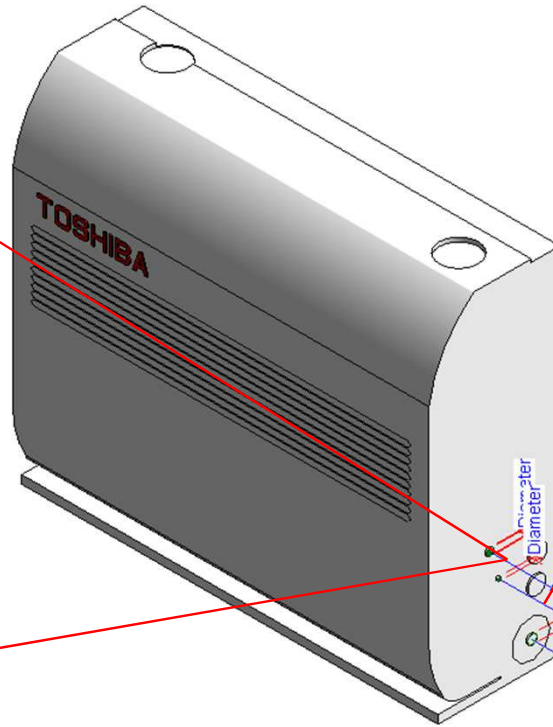


Properties	
R	
Connector Element (1) Edit Type	
Electrical - Loads	
System Type	Controls
Identity Data	
Utility	<input type="checkbox"/>
Connector Description	CONTROL CABLE PORT

Properties	
R	
Connector Element (1) Edit Type	
Electrical - Loads	
System Type	Power - Unbalanced
Number of Poles	1
Power Factor State	Lagging
Load Classification	Other
Load Sub-Classification Motor	<input type="checkbox"/>
Voltage	0.00 V
Apparent Load Phase 1	0.00 VA
Apparent Load Phase 2	0.00 VA
Apparent Load Phase 3	0.00 VA
Power Factor	1.000000
Identity Data	
Utility	<input type="checkbox"/>
Connector Description	ELECTRICAL CONNECTOR

Pipe Connectors

Properties	
R	
Connector Element (1) Edit Type	
Dimensions	
Diameter	9.5
Mechanical	
K Coefficient	0.000000
Flow Factor	0.000000
Flow Configuration	Calculated
Flow Direction	Out
Loss Method	Not Defined
Allow Slope Adjustments	<input type="checkbox"/>
System Classification	Hydronic Return
Mechanical - Flow	
Flow	0.000 GPM
Pressure Drop	0.000 psi
Identity Data	
Utility	<input type="checkbox"/>
Connector Description	Refrigerant Pipe Connecting Port-Gas (dia 9.5mm)



Properties	
R	
Connector Element (1) Edit Type	
Dimensions	
Diameter	6.4
Mechanical	
K Coefficient	0.000000
Flow Factor	0.000000
Flow Configuration	Calculated
Flow Direction	In
Loss Method	Not Defined
Allow Slope Adjustments	<input type="checkbox"/>
System Classification	Hydronic Supply
Mechanical - Flow	
Flow	0.000 GPM
Pressure Drop	0.000 psi
Identity Data	
Utility	<input type="checkbox"/>
Connector Description	Refrigerant Pipe Connecting Port-Liquid (dia 6.4mm)

Properties	
R	
Connector Element (1) Edit Type	
Dimensions	
Diameter	12.7
Mechanical	
K Coefficient	0.000000
Flow Factor	0.000000
Flow Configuration	Calculated
Flow Direction	Out
Loss Method	Not Defined
Allow Slope Adjustments	<input type="checkbox"/>
System Classification	Hydronic Return
Mechanical - Flow	
Flow	0.000 GPM
Pressure Drop	0.000 psi
Identity Data	
Utility	<input type="checkbox"/>
Connector Description	Refrigerant Pipe Connecting Port-Gas (dia 12.7mm)

Properties	
R	
Connector Element (1) Edit Type	
Dimensions	
Diameter	16.0
Mechanical	
K Coefficient	0.000000
Flow Factor	0.000000
Flow Configuration	Calculated
Flow Direction	Out
Loss Method	Not Defined
Allow Slope Adjustments	<input type="checkbox"/>
System Classification	Vent
Mechanical - Flow	
Flow	0.000 GPM
Pressure Drop	0.000 psi
Identity Data	
Utility	<input type="checkbox"/>
Connector Description	DRAIN PORT

RAS-B10U2FVG-E1

Family Types

Type name: RAS-B10U2FVG-E1

Search parameters

Parameter	Value	Formula
Materials and Finishes		
Red	Colour RGB-255 000 000	=
White	Colour RGB-255 255 255	=
Electrical		
MOCP (A)	15	=
MCA (A)	-	=
Running current-Cooling	0.17 - 0.15	=
Power consumption-Cooling	20	=
Running current-Heating	0.20 - 0.19	=
Power consumption-Heating	25	=
Frequency (Hz)	50Hz	=
Voltage (V)	220-240V	=
Starting current	4.50 - 3.00	=
Dimensions		
Height (mm)	600.0	=
Width (mm)	700.0	=
Depth (mm)	220.0	=
Piping diameter Gas (mm)	9.5	=
Piping diameter Liquid (mm)	6.4	=
Drain pipe(mm)	16.0	=
Duct diameters(mm)	-	=
Mechanical - Flow		
Static pressure	-	=
Sound pressure dB(A)-Cooling/Heating- High	39 / 39	=
Sound pressure dB(A)-Cooling/Heating-Mid+	-	=
Sound pressure dB(A)-Cooling/Heating-Mid	32 / 32	=
Sound pressure dB(A)-Cooling/Heating-Low+	-	=
Sound pressure dB(A)-Cooling/Heating-Low	26 / 26	=
Airflow m3/h -Cooling/Heating	468 / 510	=
Mechanical - Loads		
Rated Capacity kW-Cooling/Heating	2.5 / 3.2	=
Rated Power Consumption kW-Cooling/Heating	0.60 / 0.86	=
Rated efficiency-EER / COP	4.17 / 3.72	=
Energy Analysis		
Energy class-Cooling/Heating	A++ / A+	=
Seasonal Efficiency-SEER / SCOP	6.6 / 4.2	=
Pdesign-Cooling/Heating	2.5 / 2.5 (Tbiv= -7degC)	=

Family Types

Type name: RAS-B10U2FVG-E1

Search parameters

Parameter	Value	Formula
Pdesign-Cooling/Heating	2.5 / 2.5 (Tbiv= -7degC)	=
Visibility		
SERVICE AREA (default)	<input type="checkbox"/>	=
Left Side Clearance (mm) (default)	50.0	=
Right Side Clearance (mm) (default)	50.0	=
Top Clearance (mm) (default)	70.0	=
Other		
Compressor-Type	-	=
Compressor-Motor Output W	-	=
Operating range degC-Cooling	21 - 32	=
Operating range degC-Heating	0 - 28	=
Refrigerant information	R410A	=
Weight (Kg)	16	=
Identity Data		
Article Description	R32 Console	=
Article Type	RAS-B10U2FVG-E1	=
Base Family Version		=
CB-NL Class		=
Content Supplier URL	www.hcltech.com	=
Copyright	©Toshiba / HCL	= "©Toshiba / HCL"
Custom	<input checked="" type="checkbox"/>	=
EMCS	4	= "4"
ETIM Article Class	EC001213	= "EC001213"
Family Version		=
GLN		=
GTIN		=
Internal Art. No.		=
MEPcontent Class	HEATPUMP	= "HEATPUMP"
Manufacturer Art. No.	RAS-B10U2FVG-E1	=
Manufacturer URL	https://www.toshiba-carrier.co.jp/global/	=
Product Line	TCTC	= "TCTC"
Revit Version	2017	= "2017"
Stabu Code		=
Type Image		=
Keynote		=
Model	RAS-B10U2FVG-E1	=
Manufacturer	Toshiba	= "Toshiba"
Type Comments		=
URL	https://www.toshiba-carrier.co.jp/global/	=
Description	R32 Console	=
Assembly Code		=
Cost		=
Watermarked By		=
Wholesaler		=
Wholesaler Art. No.		=

RAS-B13U2FVG-E1

Family Types

Type name: RAS-B13U2FVG-E1

Search parameters

Parameter	Value	Formula
Materials and Finishes		
Red	Colour RGB-255 000 000	=
White	Colour RGB-255 255 255	=
Electrical		
MOCP (A)	15	=
MCA (A)	-	=
Running current-Cooling	0.20 - 0.18	=
Power consumption-Cooling	25	=
Running current-Heating	0.24 - 0.22	=
Power consumption-Heating	30	=
Frequency (Hz)	50Hz	=
Voltage (V)	220-240V	=
Starting current	5.95 - 5.15	=
Dimensions		
Height (mm)	600.0	=
Width (mm)	700.0	=
Depth (mm)	220.0	=
Piping diameter Gas (mm)	9.5	=
Piping diameter Liquid (mm)	6.4	=
Drain pipe(mm)	16.0	=
Duct diameters(mm)	-	=
Mechanical - Flow		
Static pressure	-	=
Sound pressure dB(A)-Cooling/Heating- High	40 / 40	=
Sound pressure dB(A)-Cooling/Heating-Mid+	-	=
Sound pressure dB(A)-Cooling/Heating-Mid	33 / 33	=
Sound pressure dB(A)-Cooling/Heating-Low+	-	=
Sound pressure dB(A)-Cooling/Heating-Low	27 / 27	=
Airflow m3/h -Cooling/Heating	510 / 552	=
Mechanical - Loads		
Rated Capacity kW-Cooling/Heating	3.5 / 4.2	=
Rated Power Consumption kW-Cooling/Heating	1.10 / 1.25	=
Rated efficiency-EER / COP	3.18 / 3.36	=
Energy Analysis		
Energy class-Cooling/Heating	A++ / A+	=
Seasonal Efficiency-SEER / SCOP	6.4 / 4.2	=
Pdesigh-Cooling/Heating	3.5 / 3.0 (Tbiv= -7degC)	=

Family Types

Type name: RAS-B13U2FVG-E1

Search parameters

Parameter	Value	Formula
Visibility		
SERVICE AREA (default)	<input type="checkbox"/>	=
Left Side Clearance (mm) (default)	50.0	=
Right Side Clearance (mm) (default)	50.0	=
Top Clearance (mm) (default)	70.0	=
Other		
Compressor-Type	-	=
Compressor-Motor Output W	-	=
Operating range degC-Cooling	21 - 32	=
Operating range degC-Heating	0 - 28	=
Refrigerant information	R410A	=
Weight (Kg)	16	=
Identity Data		
Article Description	R32 Console	=
Article Type	RAS-B13U2FVG-E1	=
Base Family Version		=
CB-NL Class		=
Content Supplier URL	www.hcltech.com	=
Copyright	© Toshiba / HCL	= "©Toshiba / HCL"
Custom	<input checked="" type="checkbox"/>	=
EMCS	4	= "4"
ETIM Article Class	EC001213	= "EC001213"
Family Version		=
GLN		=
GTIN		=
Internal Art. No.		=
MEPcontent Class	HEATPUMP	= "HEATPUMP"
Manufacturer Art. No.	RAS-B13U2FVG-E1	=
Manufacturer URL	https://www.toshiba-carrier.co.jp/global/	=
Product Line	TCTC	= "TCTC"
Revit Version	2017	= "2017"
Stabu Code		=
Type Image		=
Keynote		=
Model	RAS-B13U2FVG-E1	=
Manufacturer	Toshiba	= "Toshiba"
Type Comments		=
URL	https://www.toshiba-carrier.co.jp/global/	=
Description	R32 Console	=
Assembly Code		=
Cost		=
Watermarked By		=
Wholesaler		=
Wholesaler Art. No.		=

RAS-B18U2FVG-E1

Family Types

Type name: RAS-B18U2FVG-E1

Search parameters

Parameter	Value	Formula
Materials and Finishes		
Red	Colour RGB-255 000 000	=
White	Colour RGB-255 255 255	=
Electrical		
MOCP (A)	15	=
MCA (A)	-	=
Running current-Cooling	0.27 - 0.24	=
Power consumption-Cooling	35	=
Running current-Heating	0.30 - 0.28	=
Power consumption-Heating	40	=
Frequency (Hz)	50Hz	=
Voltage (V)	220-240V	=
Starting current	9.50 - 7.55	=
Dimensions		
Height (mm)	600.0	=
Width (mm)	700.0	=
Depth (mm)	220.0	=
Piping diameter Gas (mm)	12.7	=
Piping diameter Liquid (mm)	6.4	=
Drain pipe(mm)	16.0	=
Duct diameters(mm)	-	=
Mechanical - Flow		
Static pressure	-	=
Sound pressure dB(A)-Cooling/Heating- High	45 / 46	=
Sound pressure dB(A)-Cooling/Heating-Mid+	-	=
Sound pressure dB(A)-Cooling/Heating-Mid	40 / 40	=
Sound pressure dB(A)-Cooling/Heating-Low+	-	=
Sound pressure dB(A)-Cooling/Heating-Low	34 / 34	=
Airflow m3/h -Cooling/Heating	600 / 642	=
Mechanical - Loads		
Rated Capacity kW-Cooling/Heating	5.0 / 6.2	=
Rated Power Consumption kW-Cooling/Heating	1.75 / 2.00	=
Rated efficiency-EER / COP	2.86 / 2.93	=
Energy Analysis		
Energy class-Cooling/Heating	A++ / A+	=
Seasonal Efficiency-SEER / SCOP	6.2 / 4.0	=
Pdesigh-Cooling/Heating	5.0 / 4.0 (Tbiv= -7degC)	=

Family Types

Type name: RAS-B18U2FVG-E1

Search parameters

Parameter	Value	Formula
Visibility		
SERVICE AREA (default)	<input type="checkbox"/>	=
Left Side Clearance (mm) (default)	50.0	=
Right Side Clearance (mm) (default)	50.0	=
Top Clearance (mm) (default)	70.0	=
Other		
Compressor-Type	-	=
Compressor-Motor Output W	-	=
Operating range degC-Cooling	21 - 32	=
Operating range degC-Heating	0 - 28	=
Refrigerant information	R410A	=
Weight (Kg)	16	=
Identity Data		
Article Description	R32 Console	=
Article Type	RAS-B18U2FVG-E1	=
Base Family Version		=
CB-NL Class		=
Content Supplier URL	www.hcltech.com	=
Copyright	©Toshiba / HCL	"©Toshiba / HCL"
Custom	<input checked="" type="checkbox"/>	=
EMCS	4	"4"
ETIM Article Class	EC001213	"EC001213"
Family Version		=
GLN		=
GTIN		=
Internal Art. No.		=
MEPcontent Class	HEATPUMP	"HEATPUMP"
Manufacturer Art. No.	RAS-B18U2FVG-E1	=
Manufacturer URL	https://www.toshiba-carrier.co.jp/global/	=
Product Line	TCTC	"TCTC"
Revit Version	2017	"2017"
Stabu Code		=
Type Image		=
Keynote		=
Model	RAS-B18U2FVG-E1	=
Manufacturer	Toshiba	"Toshiba"
Type Comments		=
URL	https://www.toshiba-carrier.co.jp/global/	=
Description	R32 Console	=
Assembly Code		=
Cost		=
Watermarked By		=
Wholesaler		=
Wholesaler Art. No.		=



Thank You