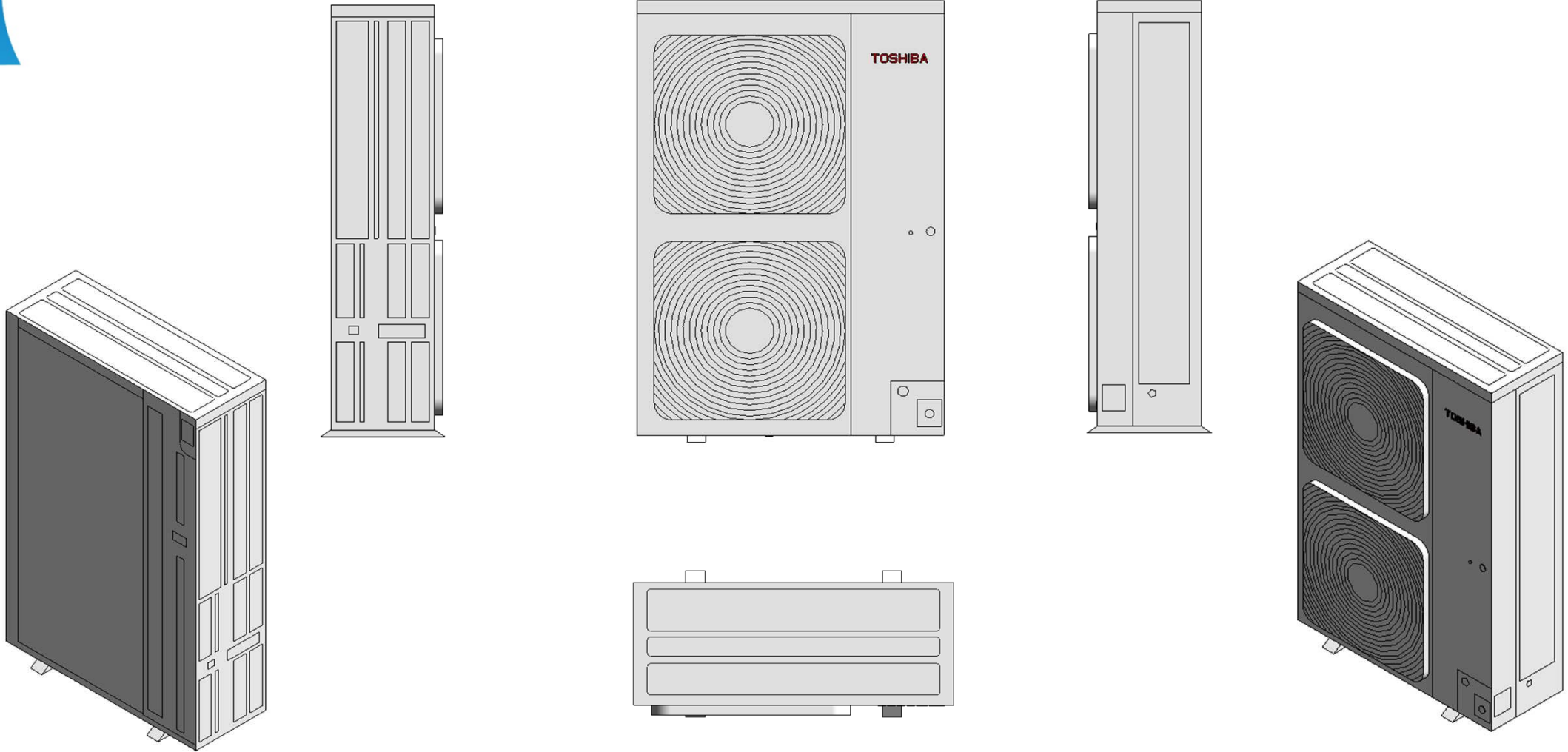


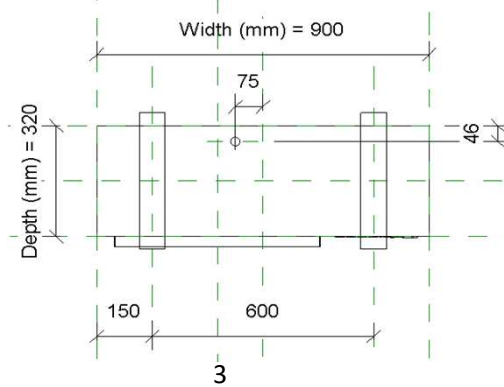
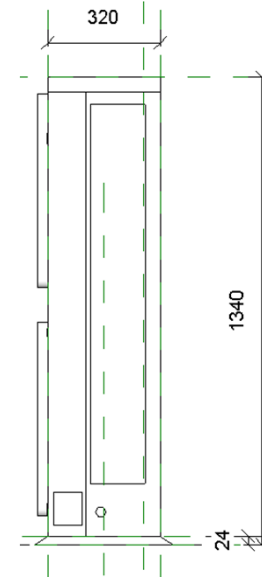
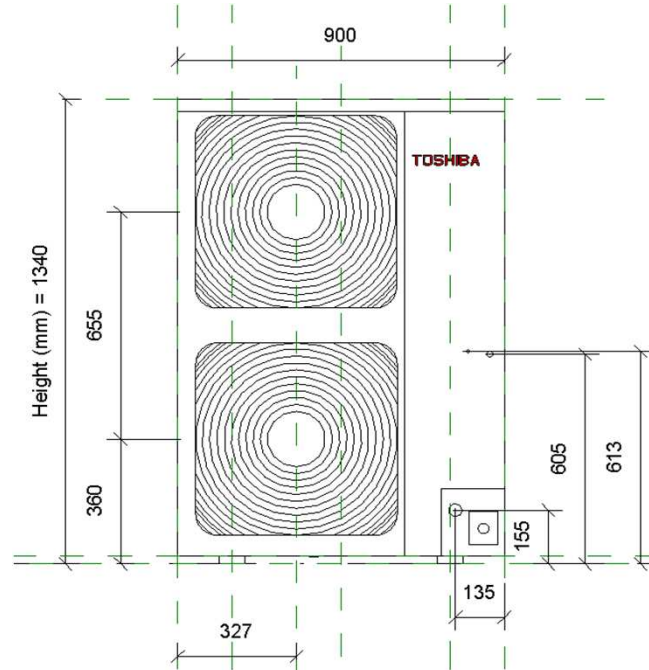
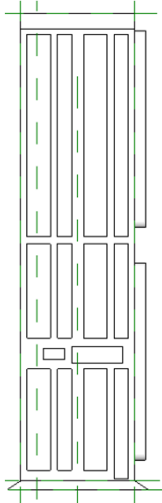
RAV_GM1ATP_160

20-04-2020

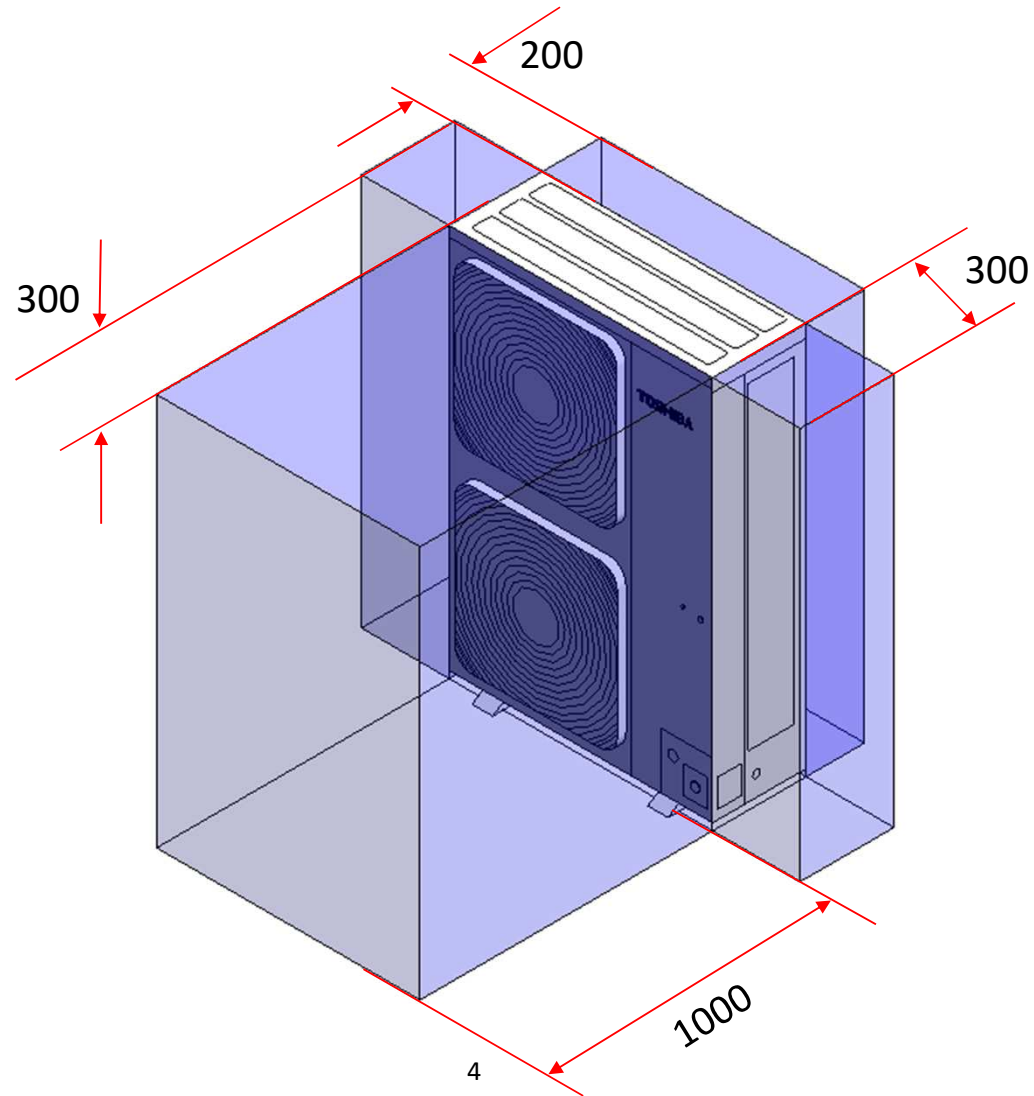
RAV_GM1ATP_160



RAV_GM1ATP_160



RAV_GM1ATP_160_Service Area

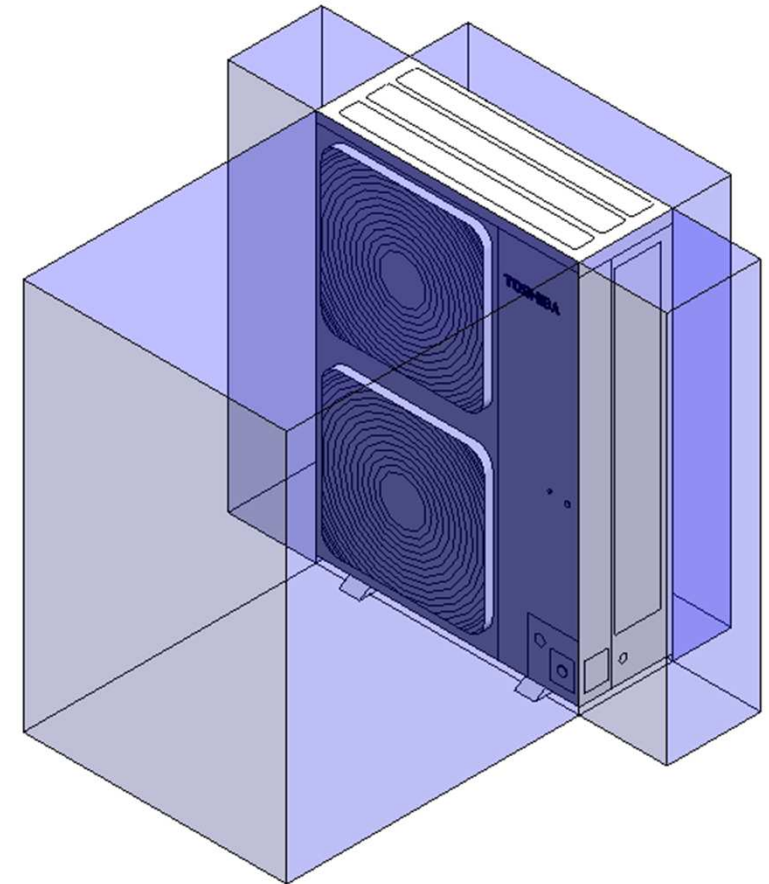


RAV_GM1ATP_160

Visibility

Service Area (default)	<input checked="" type="checkbox"/>
Front Clearance (mm) (default)	1000.0
Rear Clearance (default)	200.0
Right Side Clearance (mm) (default)	300.0
Left Side Clearance (mm) (default)	300.0

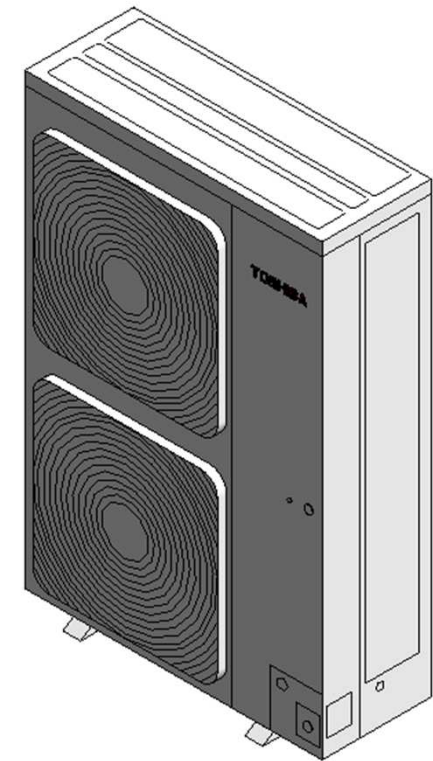
Service Clearance ON



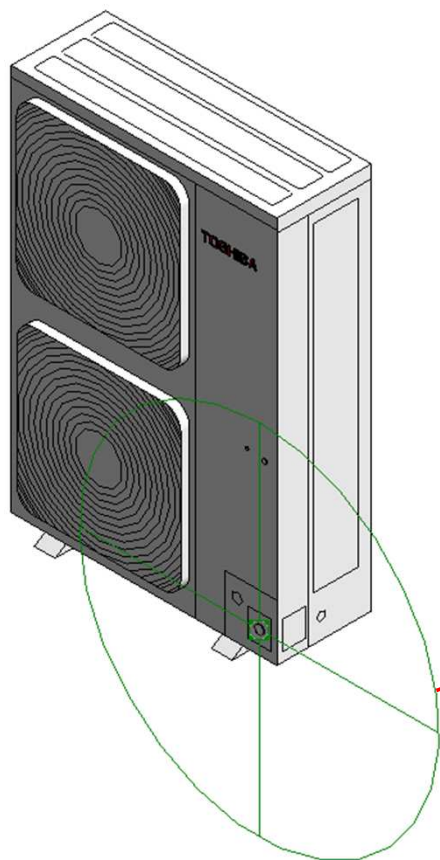
RAV_GM1ATP_160

Visibility	
Service Area (default)	<input type="checkbox"/>
Front Clearance (mm) (default)	1000.0
Rear Clearance (default)	200.0
Right Side Clearance (mm) (default)	300.0
Left Side Clearance (mm) (default)	300.0

Service Clearance OFF



Electrical Connector

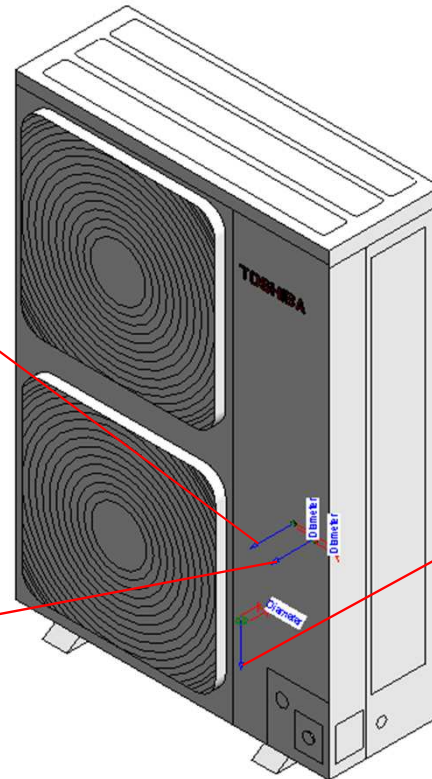


Connector Element (1)	
Electrical - Loads	
System Type	Power - Unbalanced
Number of Poles	1
Power Factor State	Lagging
Load Classification	Other
Load Sub-Classification Motor	<input type="checkbox"/>
Voltage	0.00 V
Apparent Load Phase 1	0.00 VA
Apparent Load Phase 2	0.00 VA
Apparent Load Phase 3	0.00 VA
Power Factor	1.000000
Identity Data	
Utility	<input type="checkbox"/>
Connector Description	ELECTRICAL CONNECTOR

Pipe Connectors

Properties	
R	
Connector Element (1) Edit Type	
Dimensions	
Diameter	9.5
Mechanical	
K Coefficient	0.000000
Flow Factor	0.000000
Flow Configuration	Calculated
Flow Direction	In
Loss Method	Not Defined
Allow Slope Adjustments	<input type="checkbox"/>
System Classification	Hydronic Supply
Mechanical - Flow	
Flow	0.00 L/s
Pressure Drop	0.00 Pa
Identity Data	
Utility	<input type="checkbox"/>
Connector Description	Refrigerant pipe connecting port - Liquid side @9.5mm

Properties	
R	
Connector Element (1) Edit Type	
Dimensions	
Diameter	15.9
Mechanical	
K Coefficient	0.000000
Flow Factor	0.000000
Flow Configuration	Calculated
Flow Direction	Out
Loss Method	Not Defined
Allow Slope Adjustments	<input type="checkbox"/>
System Classification	Hydronic Return
Mechanical - Flow	
Flow	0.00 L/s
Pressure Drop	0.00 Pa
Identity Data	
Utility	<input type="checkbox"/>
Connector Description	Refrigerant pipe connecting port - Gas side @15.9mm



Properties	
R	
Connector Element (1) Edit Type	
Dimensions	
Diameter	25.0
Mechanical	
K Coefficient	0.000000
Flow Factor	0.000000
Flow Configuration	Calculated
Flow Direction	Out
Loss Method	Not Defined
Allow Slope Adjustments	<input type="checkbox"/>
System Classification	Vent
Mechanical - Flow	
Flow	0.00 L/s
Pressure Drop	0.00 Pa
Identity Data	
Utility	<input type="checkbox"/>
Connector Description	DRAIN PORT

RAV-GM1601ATP-E

Family Types

Type name: RAV-GM1601ATP-E

Search parameters

Parameter	Value	Formula
Materials and Finishes		
Red	Colour RGB-250 000 000	=
White	Colour RGB-255 255 255	=
Electrical		
MOCP (A)	32	=
MCA (A)	-	=
Running current-Cooling	-	=
Power consumption-Cooling	-	=
Running current-Heating	-	=
Power consumption-Heating	-	=
Frequency (Hz)	50Hz 220-240V	=
Voltage (V)	60Hz 220V	=
Starting current	-	=
Dimensions		
Height (mm)	1340.0	=
Width (mm)	900.0	=
Depth (mm)	320.0	=
Piping diameter (mm)-Gas	15.9	=
Piping diameter (mm)-Liquid	9.5	=
Drain pipe(mm)	-	=
Duct diameters(mm)	-	=
Mechanical - Flow		
Static pressure	-	=
Sound pressure dB(A) - Cooling/Heating-High	53 / 55	=
Sound pressure dB(A) - Cooling/Heating-Mid	-	=
Sound pressure dB(A) - Cooling/Heating-Low	-	=
Airflow m3/h-Cooling/Heating	6900	=
Mechanical - Loads		
Rated Capacity kW-Cooling/Heating	-	=
Rated Power Consumption kW-Cooling/Heating	-	=
Rated efficiency-EER / COP	-	=
Energy Analysis		
Energy class-Cooling/Heating	-	=
Seasonal Efficiency-SEER / SCOP	-	=
Pdesigh-Cooling/Heating	-	=

Family Types

Type name: RAV-GM1601ATP-E

Search parameters

Parameter	Value	Formula
Visibility		
Service Area (default)	<input type="checkbox"/>	=
Front Clearance (mm) (default)	1000.0	=
Rear Clearance (default)	200.0	=
Right Side Clearance (mm) (default)	300.0	=
Left Side Clearance (mm) (default)	300.0	=
Other		
Compressor detail - Type	Hermetic twin rotary compressor	=
Compressor detail - Motor output (KW)	-	=
Operating range - Cooling (°C)	-15 to 46	=
Operating range - Heating (°C)	-20 to 15	=
Refrigerant information	R32	=
Weight (Kg)	-	=
Identity Data		
Article Description	R32 DI	=
Article Type	RAV-GM1601ATP-E	=
Assembly Code		=
Base Family Version		=
CB-NL Class		=
Content Supplier URL	www.hcltech.com	=
Copyright	©Toshiba / HCL	= "©Toshiba / HCL"
Cost		=
Custom	<input type="checkbox"/>	=
Description	R32 DI	=
EMCS	4	= "4"
ETIM Article Class	EC001213	= "EC001213"
Family Version		=
GLN		=
GTIN		=
Internal Art. No.		=
Keynote		=
MEPcontent Class	HEATPUMP	= "HEATPUMP"
Manufacturer	Toshiba	= "Toshiba"
Manufacturer Art. No.	RAV-GM1601ATP-E	=
Manufacturer URL	https://www.toshiba-carrier.co.jp/global/	=
Model	RAV-GM1601ATP-E	=
Product Line	TCTC	= "TCTC"
Revit Version	2017	= "2017"
Stabu Code		=
Type Comments		=
Type Image		=
URL	https://www.toshiba-carrier.co.jp/global/	=
Watermarked By		=
Wholesaler		=
Wholesaler Art. No.		=

RAV-GM1601AT8P-E

Family Types

Type name: RAV-GM1601AT8P-E

Search parameters

Parameter	Value	Formula
Materials and Finishes		
Red	Colour RGB-250 000 000	=
White	Colour RGB-255 255 255	=
Electrical		
MOCP (A)	20	=
MCA (A)	-	=
Running current-Cooling	-	=
Power consumption-Cooling	-	=
Running current-Heating	-	=
Power consumption-Heating	-	=
Frequency (Hz)	3Phase 50Hz 380-415V	=
Voltage (V)	3Phase 60Hz 380V	=
Starting current	-	=
Dimensions		
Height (mm)	1340.0	=
Width (mm)	900.0	=
Depth (mm)	320.0	=
Piping diameter (mm)-Gas	15.9	=
Piping diameter (mm)-Liquid	9.5	=
Drain pipe(mm)	-	=
Duct diameters(mm)	-	=
Mechanical - Flow		
Static pressure	-	=
Sound pressure dB(A) - Cooling/Heating-High	53 / 55	=
Sound pressure dB(A) - Cooling/Heating-Mid	-	=
Sound pressure dB(A) - Cooling/Heating-Low	-	=
Airflow m3/h-Cooling/Heating	6900	=
Mechanical - Loads		
Rated Capacity kW-Cooling/Heating	-	=
Rated Power Consumption kW-Cooling/Heating	-	=
Rated efficiency-EER / COP	-	=
Energy Analysis		
Energy class-Cooling/Heating	-	=
Seasonal Efficiency-SEER / SCOP	-	=
Pdesigh-Cooling/Heating	-	=
Visibility		
Service Area (default)	<input type="checkbox"/>	=
Front Clearance (mm) (default)	1000.0	=
Rear Clearance (default)	200.0	=
Right Side Clearance (mm) (default)	300.0	=
Left Side Clearance (mm) (default)	300.0	=

Family Types

Type name: RAV-GM1601AT8P-E

Search parameters

Parameter	Value	Formula
Visibility		
Service Area (default)	<input type="checkbox"/>	=
Front Clearance (mm) (default)	1000.0	=
Rear Clearance (default)	200.0	=
Right Side Clearance (mm) (default)	300.0	=
Left Side Clearance (mm) (default)	300.0	=
Other		
Compressor detail - Type	Hermetic twin rotary compressor	=
Compressor detail - Motor output (KW)	-	=
Operating range - Cooling (°C)	-15 to 46	=
Operating range - Heating (°C)	-15 to 15	=
Refrigerant information	R32	=
Weight (Kg)	-	=
Identity Data		
Article Description	R32 DI	=
Article Type	RAV-GM1601AT8P-E	=
Assembly Code		=
Base Family Version		=
CB-NL Class		=
Content Supplier URL	www.hcltech.com	=
Copyright	©Toshiba / HCL	= "©Toshiba / HCL"
Cost		=
Custom	<input type="checkbox"/>	=
Description	R32 DI	=
EMCS	4	= "4"
ETIM Article Class	EC001213	= "EC001213"
Family Version		=
GLN		=
GTIN		=
Internal Art. No.		=
Keynote		=
MEPcontent Class	HEATPUMP	= "HEATPUMP"
Manufacturer	Toshiba	= "Toshiba"
Manufacturer Art. No.	RAV-GM1601AT8P-E	=
Manufacturer URL	https://www.toshiba-carrier.co.jp/global/	=
Model	RAV-GM1601AT8P-E	=
Product Line	TCTC	= "TCTC"
Revit Version	2017	= "2017"
Stabu Code		=
Type Comments		=
Type Image		=
URL	https://www.toshiba-carrier.co.jp/global/	=
Watermarked By		=
Wholesaler		=
Wholesaler Art. No.		=



Thank You