

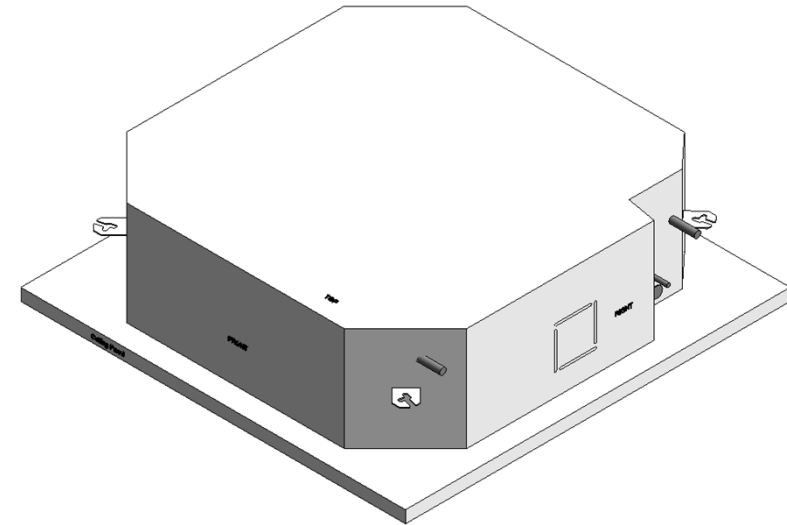
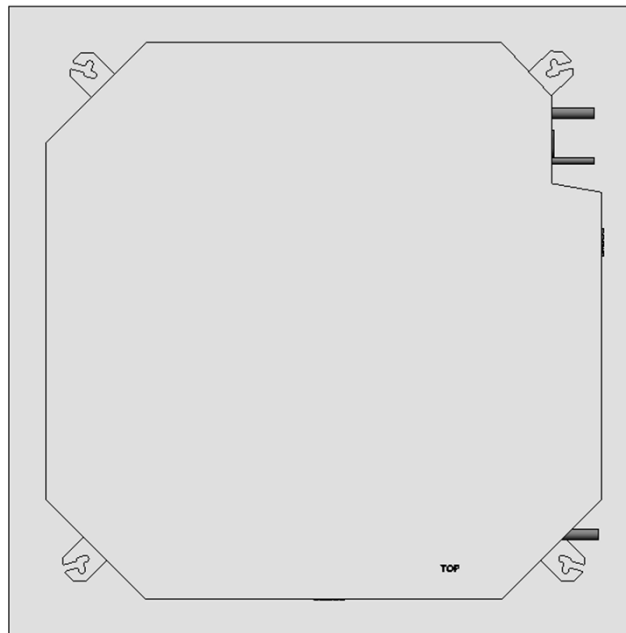
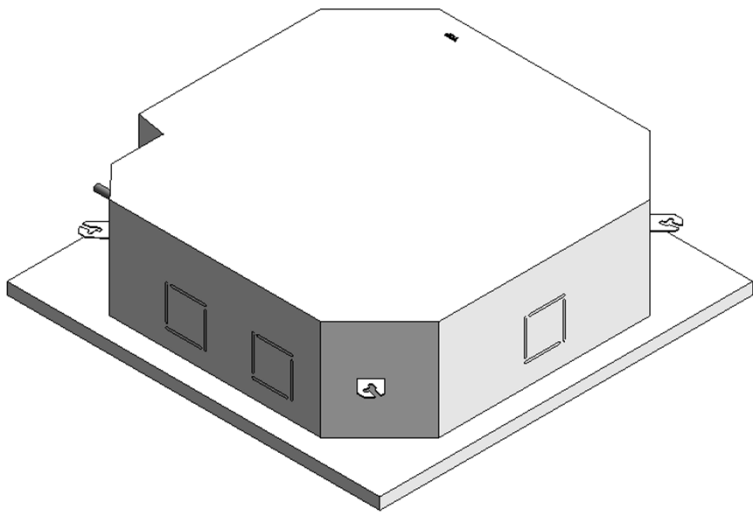
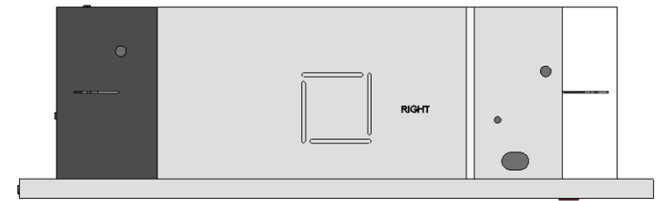
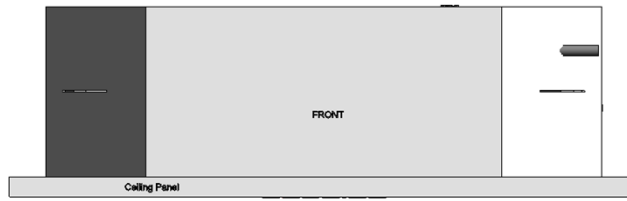
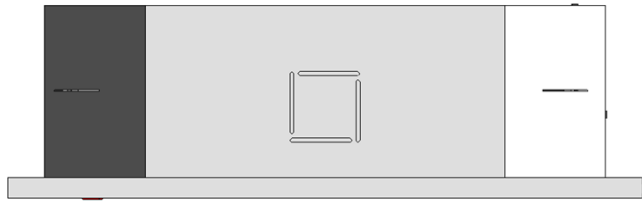
An abstract graphic on the left side of the slide, composed of numerous overlapping, semi-transparent blue rectangular and polygonal shapes. These shapes are arranged in a way that creates a sense of depth and perspective, appearing to recede towards a bright white light source at the center of the composition. The colors range from light sky blue to deep navy blue.

**HCL**

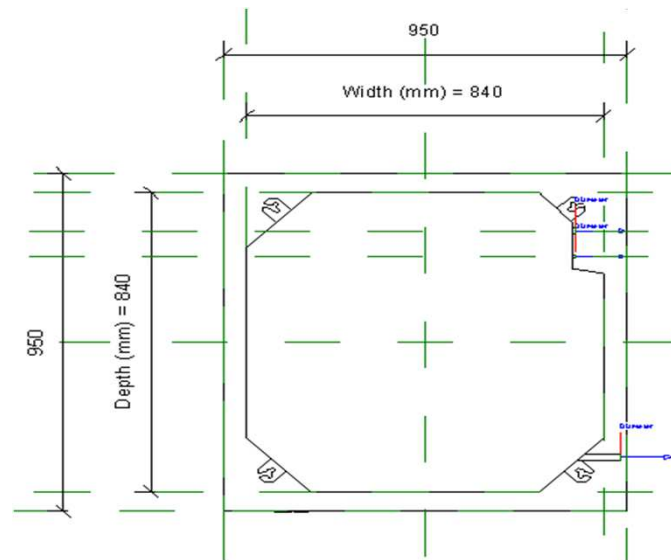
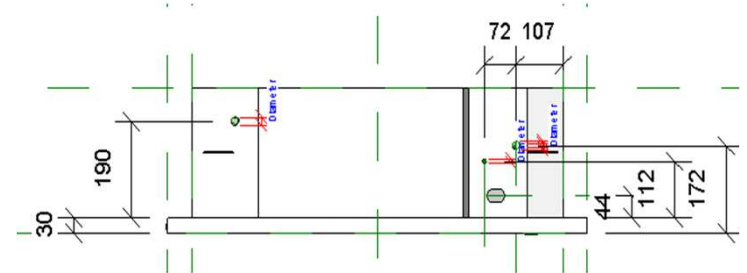
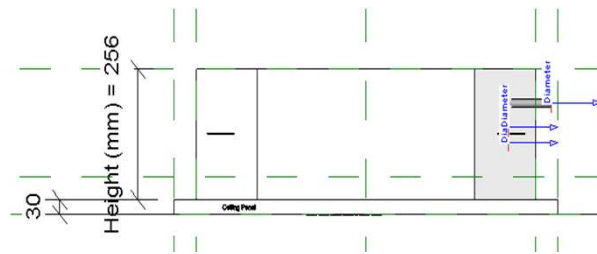
VRF\_MMU1HP\_09-30

27-01-2021

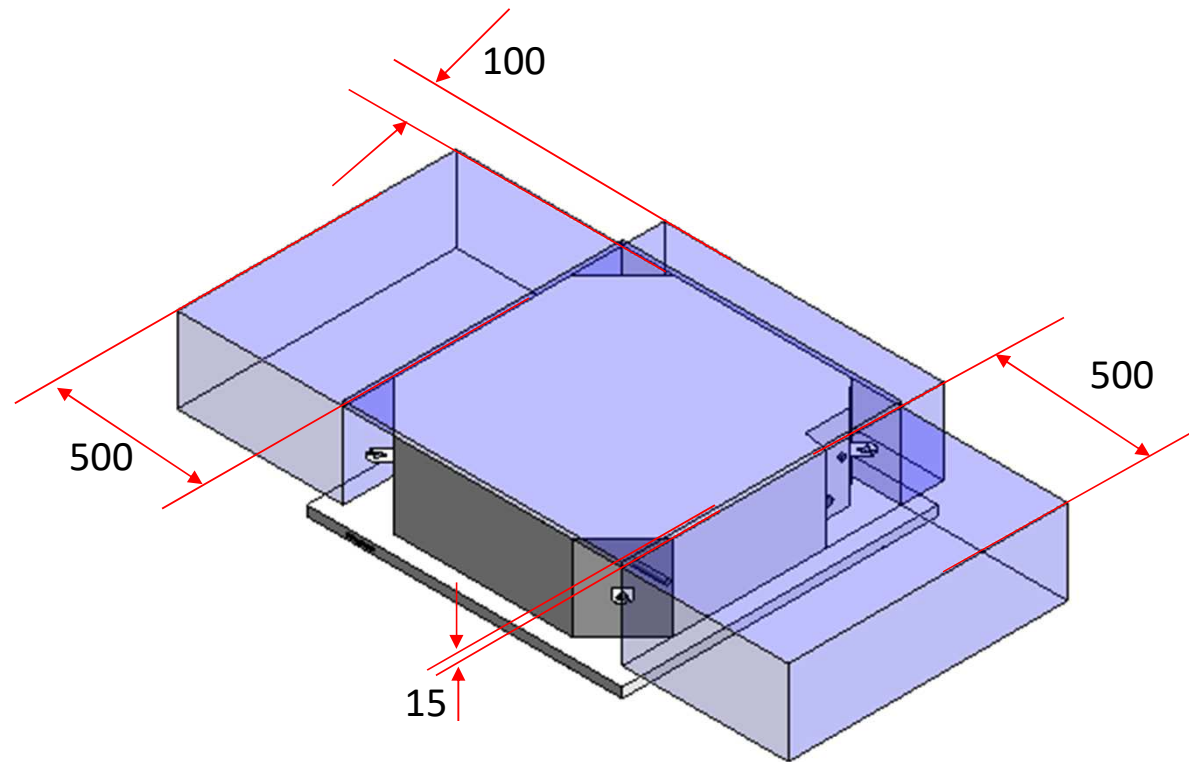
# VRF\_MMU1HP\_09-30



# VRF\_MMU1HP\_09-30

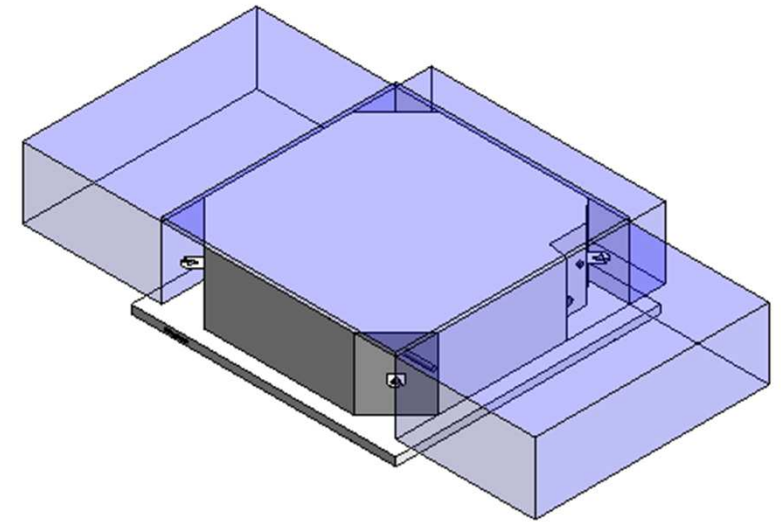


# VRF\_MMU1HP\_09-30\_Service Area



# VRF\_MMU1HP\_09-30

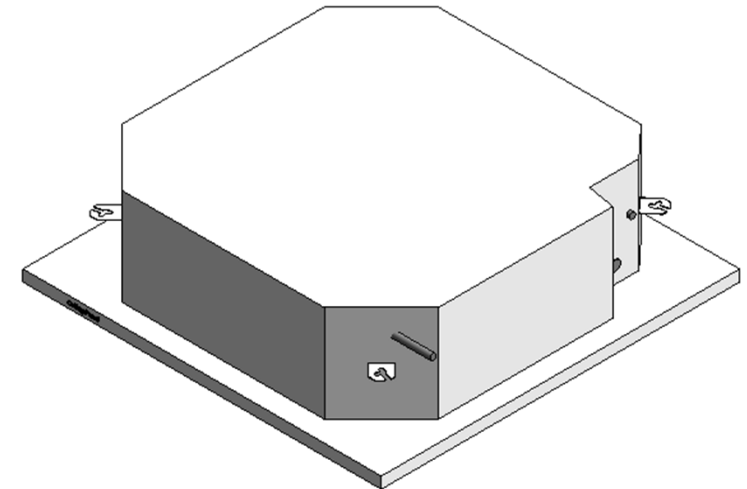
Visibility	
Service Area (default)	<input checked="" type="checkbox"/>
Top Clearance (mm) (default)	15.0
Right Side Clearance (mm) (default)	500.0
Left Side Clearance (mm)	500
Back Clearance (mm) (default)	100.0



Service Clearance ON

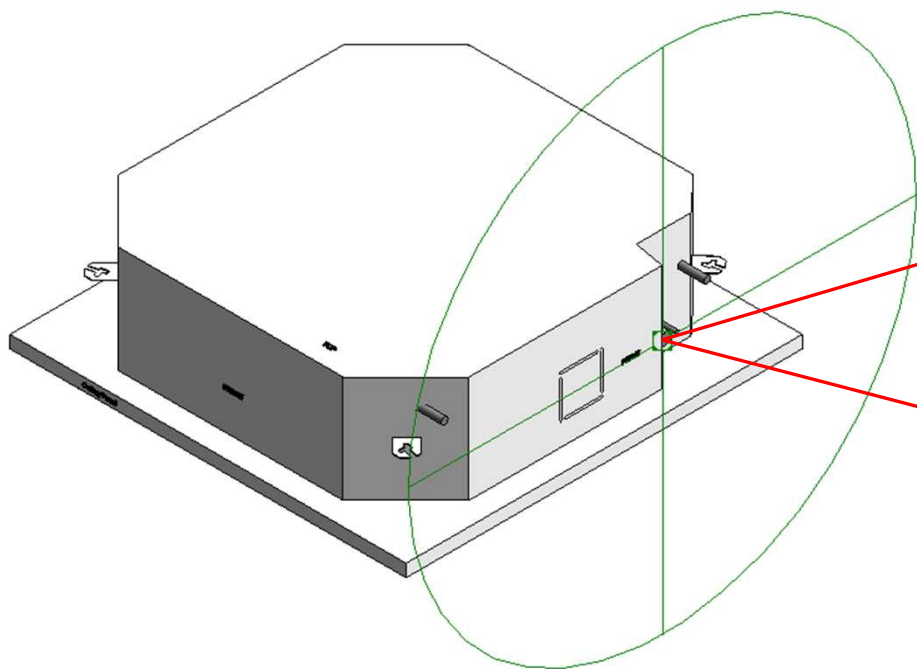
# VRF\_MMU1HP\_09-30

Visibility	
Service Area (default)	<input type="checkbox"/>
Top Clearance (mm) (default)	15.0
Right Side Clearance (mm) (default)	500.0
Left Side Clearance (mm)	500
Back Clearance (mm) (default)	100.0



Service Clearance OFF

# Electrical Connector



Properties

R

Connector Element (1) Edit Type

Electrical - Loads

System Type	Power - Unbalanced
Number of Poles	1
Power Factor State	Lagging
Load Classification	Other
Load Sub-Classification Motor	<input type="checkbox"/>
Voltage	0.00 V
Apparent Load Phase 1	0.00 VA
Apparent Load Phase 2	0.00 VA
Apparent Load Phase 3	0.00 VA
Power Factor	1.000000

Identity Data

Utility	<input type="checkbox"/>
Connector Description	ELECTRICAL CONNECTION PORT

Properties

R

Connector Element (1) Edit Type

Electrical - Loads

System Type	Controls
-------------	----------

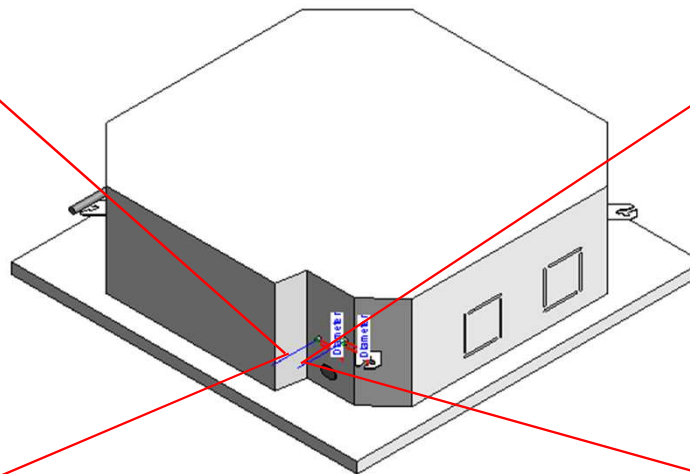
Identity Data

Utility	<input type="checkbox"/>
Connector Description	CONTROL CONNECTION PORT

# Pipe Connectors

Properties	
<b>R</b>	
Connector Element (1) Edit	
Dimensions	
Diameter	9.5
Mechanical	
K Coefficient	0.000000
Flow Factor	0.000000
Flow Configuration	Calculated
Flow Direction	In
Loss Method	Not Defined
Allow Slope Adjustments	<input type="checkbox"/>
System Classification	Hydronic Supply
Mechanical - Flow	
Flow	0.00 L/s
Pressure Drop	0.00 Pa
Identity Data	
Utility	<input type="checkbox"/>
Connector Description	HYDRONIC SUPPLY (LIQUID) PORT @ 9.5mm

Properties	
<b>R</b>	
Connector Element (1) Edit	
Dimensions	
Diameter	6.4
Mechanical	
K Coefficient	0.000000
Flow Factor	0.000000
Flow Configuration	Calculated
Flow Direction	In
Loss Method	Not Defined
Allow Slope Adjustments	<input type="checkbox"/>
System Classification	Hydronic Supply
Mechanical - Flow	
Flow	0.00 L/s
Pressure Drop	0.00 Pa
Identity Data	
Utility	<input type="checkbox"/>
Connector Description	HYDRONIC SUPPLY (LIQUID) PORT @ 6.4mm

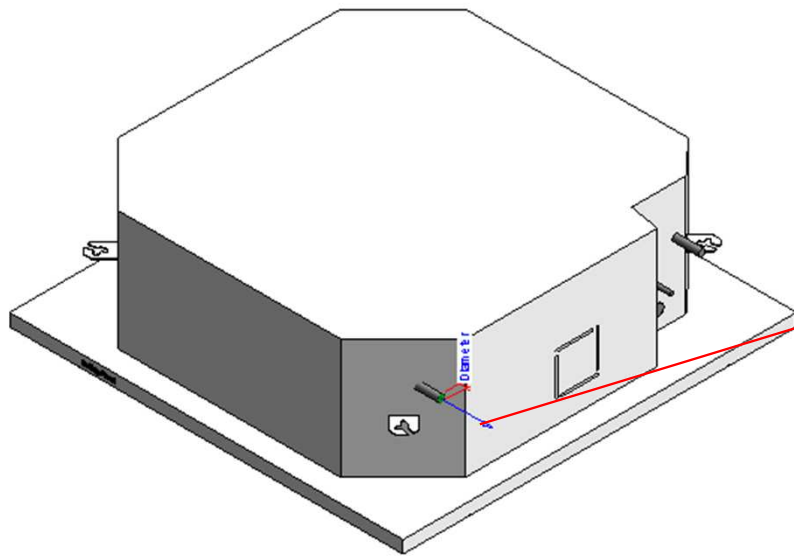


Properties	
<b>R</b>	
Connector Element (1) Edit	
Dimensions	
Diameter	15.9
Mechanical	
K Coefficient	0.000000
Flow Factor	0.000000
Flow Configuration	Calculated
Flow Direction	Out
Loss Method	Not Defined
Allow Slope Adjustments	<input type="checkbox"/>
System Classification	Hydronic Return
Mechanical - Flow	
Flow	0.00 L/s
Pressure Drop	0.00 Pa
Identity Data	
Utility	<input type="checkbox"/>
Connector Description	HYDRONIC RETURN (GAS) PORT @ 15.9mm

Properties	
<b>R</b>	
Connector Element (1) Edit	
Dimensions	
Diameter	9.5
Mechanical	
K Coefficient	0.000000
Flow Factor	0.000000
Flow Configuration	Calculated
Flow Direction	Out
Loss Method	Not Defined
Allow Slope Adjustments	<input type="checkbox"/>
System Classification	Hydronic Return
Mechanical - Flow	
Flow	0.00 L/s
Pressure Drop	0.00 Pa
Identity Data	
Utility	<input type="checkbox"/>
Connector Description	HYDRONIC RETURN (GAS) PORT @ 9.5mm



# Drain Pipe Connector



Properties	
<b>R</b>	
Connector Element (1) ▾	
Dimensions	
Diameter	16.0
Mechanical	
K Coefficient	0.000000
Flow Factor	0.000000
Flow Configuration	Calculated
Flow Direction	Out
Loss Method	Not Defined
Allow Slope Adjustments	<input type="checkbox"/>
System Classification	Vent
Mechanical - Flow	
Flow	0.00 L/s
Pressure Drop	0.00 Pa
Identity Data	
Utility	<input type="checkbox"/>
Connector Description	DRAIN PORT @ 16mm

# MMU-UP0091HP-E

## Family Types

Type name: MMU-UP0091HP-E

Search parameters

Parameter	Value	Formula
<b>Materials and Finishes</b>		
Red	Colour- RGB-255 000 000	=
White	Colour- RGB -255 255 255	=
<b>Electrical</b>		
MOCP (A)	15	=
MCA (A)	0.79	=
Running current-Cooling	0.23	=
Power consumption-Cooling	0.021	=
Running current-Heating	-	=
Power consumption-Heating	-	=
Frequency	50Hz 220 - 240V	=
Voltage	60Hz 208-220V	=
Starting current	0.3	=
<b>Dimensions</b>		
Height (mm)	256.0	=
Width (mm)	840.0	=
Depth (mm)	840.0	=
Piping diameter (mm)-Gas side	9.5	=
Piping diameter (mm)-Liquid	6.4	=
Drain Pipe Diameter (mm)	VP25 (OD:32)	=
Duct diameters(mm)	-	=
<b>Mechanical - Flow</b>		
Static pressure	-	=
Sound pressure dB(A)-High	30	=
Sound pressure dB(A)-Mid	29	=
Sound pressure dB(A)-Low	27	=
Airflow - High (m3/h)	800	=
Airflow - Mid (m3/h)	730	=
Airflow - Low (m3/h)	680	=
Power Consumption - High (W)	21	=
Power Consumption - Mid (W)	19	=
Power Consumption - Low (W)	18	=
<b>Mechanical - Loads</b>		
Seasonal & Rated efficiency	-	=
Part load	-	=
Capacities - Cooling (kW)	2.8	=
Capacities - Heating (kW)	3.2	=

## Family Types

Type name: MMU-UP0091HP-E

Search parameters

Parameter	Value	Formula
<b>Visibility</b>		
Service Area (default)	<input type="checkbox"/>	=
Top Clearance (mm) (default)	15.0	=
Right Side Clearance (mm) (default)	500.0	=
Left Side Clearance (mm)	500	=
Back Clearance (mm) (default)	100.0	=
<b>Other</b>		
Ceiling Panel (Sold Separately) - Model name	RBC-U32PGP-E	=
Ceiling Panel-Height (mm)	30.0	=
Ceiling Panel-Width (mm)	950.0	=
Ceiling Panel-Depth (mm)	950.0	=
Refrigerant Information	R410A	=
Weight (Kg)	20	=
<b>Identity Data</b>		
Article Description	Standard cassette	=
Article Type	MMU-UP0091HP-E	=
Assembly Code		=
Base Family Version		=
CB-NL Class		=
Content Supplier URL	<a href="http://www.hcltech.com">www.hcltech.com</a>	=
Copyright	©Toshiba / HCL	= "©Toshiba / HCL"
Cost		=
Description	Standard cassette	=
EMCS	4	= "4"
ETIM Article Class	EC001213	= "EC001213"
Family Version		=
GLN		=
GTIN		=
Internal Art. No.		=
Keynote		=
MEPcontent Class	HEATPUMP	= "HEATPUMP"
Manufacturer	Toshiba	= "Toshiba"
Manufacturer Art. No.	MMU-UP0091HP-E	=
Manufacturer URL	<a href="https://www.toshiba-carrier.co.jp/global/">https://www.toshiba-carrier.co.jp/global/</a>	=
Model	MMU-UP0091HP-E	=
Product Line	TCTC	= "TCTC"
Revit Version	2017	= "2017"
Stabu Code		=
Type Comments		=
Type Image		=
URL	<a href="https://www.toshiba-carrier.co.jp/global/">https://www.toshiba-carrier.co.jp/global/</a>	=
Watermarked By		=
Wholesaler		=

# MMU-UP0121HP-E

## Family Types

Type name: MMU-UP0121HP-E

Search parameters

Parameter	Value	Formula
<b>Materials and Finishes</b>		
Red	Colour RGB-255 000 000	=
White	Colour- RGB -255 255 255	=
<b>Electrical</b>		
MOCP (A)	15	=
MCA (A)	0.79	=
Running current-Cooling	0.23	=
Power consumption-Cooling	0.021	=
Running current-Heating	-	=
Power consumption-Heating	-	=
Frequency	50Hz 220 - 240V	=
Voltage	60Hz 208-220V	=
Starting current	0.3	=
<b>Dimensions</b>		
Height (mm)	256.0	=
Width (mm)	840.0	=
Depth (mm)	840.0	=
Piping diameter (mm)-Gas side	9.5	=
Piping diameter (mm)-Liquid	6.4	=
Drain Pipe Diameter (mm)	VP25 (OD:32)	=
Duct diameters(mm)	-	=
<b>Mechanical - Flow</b>		
Static pressure	-	=
Sound pressure dB(A)-High	30	=
Sound pressure dB(A)-Mid	29	=
Sound pressure dB(A)-Low	27	=
Airflow - High (m3/h)	800	=
Airflow - Mid (m3/h)	730	=
Airflow - Low (m3/h)	680	=
Power Consumption - High (W)	21	=
Power Consumption - Mid (W)	19	=
Power Consumption - Low (W)	18	=
<b>Mechanical - Loads</b>		
Seasonal & Rated efficiency	-	=
Part load	-	=
Capacities - Cooling (kW)	3.6	=
Capacities - Heating (kW)	4	=

## Family Types

Type name: MMU-UP0121HP-E

Search parameters

Parameter	Value	Formula
<b>Visibility</b>		
Service Area (default)	<input checked="" type="checkbox"/>	=
Top Clearance (mm) (default)	15.0	=
Right Side Clearance (mm) (default)	500.0	=
Left Side Clearance (mm)	500	=
Back Clearance (mm) (default)	100.0	=
<b>Other</b>		
Ceiling Panel (Sold Separately) - Model name	RBC-U32PGP-E	=
Ceiling Panel-Height (mm)	30.0	=
Ceiling Panel-Width (mm)	950.0	=
Ceiling Panel-Depth (mm)	950.0	=
Refrigerant Information	R410A	=
Weight (Kg)	20	=
<b>Identity Data</b>		
Article Description	Standard cassette	=
Article Type	MMU-UP0121HP-E	=
Assembly Code		=
Base Family Version		=
CB-NL Class		=
Content Supplier URL	www.hcltech.com	=
Copyright	©Toshiba / HCL	= "©Toshiba / HCL"
Cost		=
Description	Standard cassette	=
EMCS	4	= "4"
ETIM Article Class	EC001213	= "EC001213"
<b>Family Version</b>		
GLN		=
GTIN		=
Internal Art. No.		=
Keynote		=
MEPcontent Class	HEATPUMP	= "HEATPUMP"
Manufacturer	Toshiba	= "Toshiba"
Manufacturer Art. No.	MMU-UP0121HP-E	=
Manufacturer URL	https://www.toshiba-carrier.co.jp/global/	=
Model	MMU-UP0121HP-E	=
Product Line	TCTC	= "TCTC"
Revit Version	2017	= "2017"
Stabu Code		=
Type Comments		=
Type Image		=
URL	https://www.toshiba-carrier.co.jp/global/	=
Watermarked By		=
Wholesaler		=

# MMU-UP0151HP-E

## Family Types

Type name: MMU-UP0151HP-E

Search parameters

Parameter	Value	Formula
<b>Materials and Finishes</b>		
Red	Colour RGB-255 000 000	=
White	Colour- RGB -255 255 255	=
<b>Electrical</b>		
MOCP (A)	15	=
MCA (A)	1	=
Running current-Cooling	0.27	=
Power consumption-Cooling	0.023	=
Running current-Heating	-	=
Power consumption-Heating	-	=
Frequency	50Hz 220 - 240V	=
Voltage	60Hz 208-220V	=
Starting current	0.33	=
<b>Dimensions</b>		
Height (mm)	256.0	=
Width (mm)	840.0	=
Depth (mm)	840.0	=
Piping diameter (mm)-Gas side	12.7	=
Piping diameter (mm)-Liquid	6.4	=
Drain Pipe Diameter (mm)	VP25 (OD:32)	=
Duct diameters(mm)	-	=
<b>Mechanical - Flow</b>		
Static pressure	-	=
Sound pressure dB(A)-High	31	=
Sound pressure dB(A)-Mid	29	=
Sound pressure dB(A)-Low	27	=
Airflow - High (m3/h)	930	=
Airflow - Mid (m3/h)	830	=
Airflow - Low (m3/h)	790	=
Power Consumption - High (W)	23	=
Power Consumption - Mid (W)	20	=
Power Consumption - Low (W)	19	=
<b>Mechanical - Loads</b>		
Seasonal & Rated efficiency	-	=
Part load	-	=
Capacities - Cooling (kW)	4.5	=
Capacities - Heating (kW)	5	=

## Family Types

Type name: MMU-UP0151HP-E

Search parameters

Parameter	Value	Formula
<b>Visibility</b>		
Service Area (default)	<input checked="" type="checkbox"/>	=
Top Clearance (mm) (default)	15.0	=
Right Side Clearance (mm) (default)	500.0	=
Left Side Clearance (mm)	500	=
Back Clearance (mm) (default)	100.0	=
<b>Other</b>		
Ceiling Panel (Sold Separately) - Model name	RBC-U32PGP-E	=
Ceiling Panel-Height (mm)	30.0	=
Ceiling Panel-Width (mm)	950.0	=
Ceiling Panel-Depth (mm)	950.0	=
Refrigerant Information	R410A	=
Weight (Kg)	20	=
<b>Identity Data</b>		
Article Description	Standard cassette	=
Article Type	MMU-UP0151HP-E	=
Assembly Code		=
Base Family Version		=
CB-NL Class		=
Content Supplier URL	www.hcltech.com	=
Copyright	©Toshiba / HCL	= "©Toshiba / HCL"
Cost		=
Description	Standard cassette	=
EMCS	4	= "4"
ETIM Article Class	EC001213	= "EC001213"
Family Version		=
GLN		=
GTIN		=
Internal Art. No.		=
Keynote		=
MEPcontent Class	HEATPUMP	= "HEATPUMP"
Manufacturer	Toshiba	= "Toshiba"
Manufacturer Art. No.	MMU-UP0151HP-E	=
Manufacturer URL	https://www.toshiba-carrier.co.jp/global/	=
Model	MMU-UP0151HP-E	=
Product Line	TCTC	= "TCTC"
Revit Version	2017	= "2017"
Stabu Code		=
Type Comments		=
Type Image		=
URL	https://www.toshiba-carrier.co.jp/global/	=
Watermarked By		=
Wholesaler		=

# MMU-UP0181HP-E

## Family Types

Type name: MMU-UP0181HP-E

### Search parameters

Parameter	Value	Formula
<b>Materials and Finishes</b>		
Red	Colour RGB-255 000 000	=
White	Colour- RGB -255 255 255	=
<b>Electrical</b>		
MOCp (A)	15	=
MCA (A)	1	=
Running current-Cooling	0.29	=
Power consumption-Cooling	0.026	=
Running current-Heating	-	=
Power consumption-Heating	-	=
Frequency	50Hz 220 - 240V	=
Voltage	60Hz 208-220V	=
Starting current	0.36	=
<b>Dimensions</b>		
Height (mm)	256.0	=
Width (mm)	840.0	=
Depth (mm)	840.0	=
Piping diameter (mm)-Gas side	12.7	=
Piping diameter (mm)-Liquid	6.4	=
Drain Pipe Diameter (mm)	VP25 (OD:32)	=
Duct diameters(mm)	-	=
<b>Mechanical - Flow</b>		
Static pressure	-	=
Sound pressure dB(A)-High	32	=
Sound pressure dB(A)-Mid	29	=
Sound pressure dB(A)-Low	27	=
Airflow - High (m3/h)	1050	=
Airflow - Mid (m3/h)	920	=
Airflow - Low (m3/h)	800	=
Power Consumption - High (W)	26	=
Power Consumption - Mid (W)	23	=
Power Consumption - Low (W)	19	=
<b>Mechanical - Loads</b>		
Seasonal & Rated efficiency	-	=
Part load	-	=
Capacities - Cooling (kW)	5.6	=
Capacities - Heating (kW)	6.3	=

## Family Types

Type name: MMU-UP0181HP-E

### Search parameters

Parameter	Value	Formula
<b>Visibility</b>		
Service Area (default)	<input checked="" type="checkbox"/>	=
Top Clearance (mm) (default)	15.0	=
Right Side Clearance (mm) (default)	500.0	=
Left Side Clearance (mm)	500	=
Back Clearance (mm) (default)	100.0	=
<b>Other</b>		
Ceiling Panel (Sold Separately) - Model name	RBC-U32PGP-E	=
Ceiling Panel-Height (mm)	30.0	=
Ceiling Panel-Width (mm)	950.0	=
Ceiling Panel-Depth (mm)	950.0	=
Refrigerant Information	R410A	=
Weight (Kg)	20	=
<b>Identity Data</b>		
Article Description	Standard cassette	=
Article Type	MMU-UP0181HP-E	=
Assembly Code		=
Base Family Version		=
CB-NL Class		=
Content Supplier URL	www.hcltech.com	=
Copyright	©Toshiba / HCL	= "©Toshiba / HCL"
Cost		=
Description	Standard cassette	=
EMCS	4	= "4"
ETIM Article Class	EC001213	= "EC001213"
Family Version		=
GLN		=
GTIN		=
Internal Art. No.		=
Keynote		=
MEPcontent Class	HEATPUMP	= "HEATPUMP"
Manufacturer	Toshiba	= "Toshiba"
Manufacturer Art. No.	MMU-UP0181HP-E	=
Manufacturer URL	https://www.toshiba-carrier.co.jp/global/	=
Model	MMU-UP0181HP-E	=
Product Line	TCTC	= "TCTC"
Revit Version	2017	= "2017"
Stabu Code		=
Type Comments		=
Type Image		=
URL	https://www.toshiba-carrier.co.jp/global/	=
Watermarked By		=
Wholesaler		=

# MMU-UP0241HP-E

## Family Types

Type name: MMU-UP0241HP-E

Search parameters

Parameter	Value	Formula
<b>Materials and Finishes</b>		
Red	Colour RGB-255 000 000	=
White	Colour- RGB -255 255 255	=
<b>Electrical</b>		
MOCP (A)	15	=
MCA (A)	1.09	=
Running current-Cooling	0.38	=
Power consumption-Cooling	0.036	=
Running current-Heating	-	=
Power consumption-Heating	-	=
Frequency	50Hz 220 - 240V	=
Voltage	60Hz 208-220V	=
Starting current	0.42	=
<b>Dimensions</b>		
Height (mm)	256.0	=
Width (mm)	840.0	=
Depth (mm)	840.0	=
Piping diameter (mm)-Gas side	15.9	=
Piping diameter (mm)-Liquid	9.5	=
Drain Pipe Diameter (mm)	VP25 (OD:32)	=
Duct diameters(mm)	-	=
<b>Mechanical - Flow</b>		
Static pressure	-	=
Sound pressure dB(A)-High	35	=
Sound pressure dB(A)-Mid	31	=
Sound pressure dB(A)-Low	28	=
Airflow - High (m3/h)	1290	=
Airflow - Mid (m3/h)	920	=
Airflow - Low (m3/h)	800	=
Power Consumption - High (W)	36	=
Power Consumption - Mid (W)	23	=
Power Consumption - Low (W)	19	=
<b>Mechanical - Loads</b>		
Seasonal & Rated efficiency	-	=
Part load	-	=
Capacities - Cooling (kW)	7.1	=
Capacities - Heating (kW)	8	=

## Family Types

Type name: MMU-UP0241HP-E

Search parameters

Parameter	Value	Formula
<b>Visibility</b>		
Service Area (default)	<input checked="" type="checkbox"/>	=
Top Clearance (mm) (default)	15.0	=
Right Side Clearance (mm) (default)	500.0	=
Left Side Clearance (mm)	500	=
Back Clearance (mm) (default)	100.0	=
<b>Other</b>		
Ceiling Panel (Sold Separately) - Model name	RBC-U32PGP-E	=
Ceiling Panel-Height (mm)	30.0	=
Ceiling Panel-Width (mm)	950.0	=
Ceiling Panel-Depth (mm)	950.0	=
Refrigerant Information	R410A	=
Weight (Kg)	20	=
<b>Identity Data</b>		
Article Description	Standard cassette	=
Article Type	MMU-UP0241HP-E	=
Assembly Code		=
Base Family Version		=
CB-NL Class		=
Content Supplier URL	www.hcltech.com	=
Copyright	©Toshiba / HCL	= "©Toshiba / HCL"
Cost		=
Description	Standard cassette	=
EMCS	4	= "4"
ETIM Article Class	EC001213	= "EC001213"
Family Version		=
GLN		=
GTIN		=
Internal Art. No.		=
Keynote		=
MEPcontent Class	HEATPUMP	= "HEATPUMP"
Manufacturer	Toshiba	= "Toshiba"
Manufacturer Art. No.	MMU-UP0241HP-E	=
Manufacturer URL	https://www.toshiba-carrier.co.jp/global/	=
Model	MMU-UP0241HP-E	=
Product Line	TCTC	= "TCTC"
Revit Version	2017	= "2017"
Stabu Code		=
Type Comments		=
Type Image		=
URL	https://www.toshiba-carrier.co.jp/global/	=
Watermarked By		=
Wholesaler		=

# MMU-UP0271HP-E

## Family Types

Type name: MMU-UP0271HP-E

Search parameters

Parameter	Value	Formula
<b>Materials and Finishes</b>		
Red	Colour RGB-255 000 000	=
White	Colour- RGB -255 255 255	=
<b>Electrical</b>		
MOCP (A)	15	=
MCA (A)	1.09	=
Running current-Cooling	0.38	=
Power consumption-Cooling	0.036	=
Running current-Heating	-	=
Power consumption-Heating	-	=
Frequency	50Hz 220 - 240V	=
Voltage	60Hz 208-220V	=
Starting current	0.42	=
<b>Dimensions</b>		
Height (mm)	256.0	=
Width (mm)	840.0	=
Depth (mm)	840.0	=
Piping diameter (mm)-Gas side	15.9	=
Piping diameter (mm)-Liquid	9.5	=
Drain Pipe Diameter (mm)	VP25 (OD:32)	=
Duct diameters(mm)	-	=
<b>Mechanical - Flow</b>		
Static pressure	-	=
Sound pressure dB(A)-High	35	=
Sound pressure dB(A)-Mid	31	=
Sound pressure dB(A)-Low	28	=
Airflow - High (m3/h)	1290	=
Airflow - Mid (m3/h)	920	=
Airflow - Low (m3/h)	800	=
Power Consumption - High (W)	36	=
Power Consumption - Mid (W)	23	=
Power Consumption - Low (W)	19	=
<b>Mechanical - Loads</b>		
Seasonal & Rated efficiency	-	=
Part load	-	=
Capacities - Cooling (kW)	8	=
Capacities - Heating (kW)	9	=

## Family Types

Type name: MMU-UP0271HP-E

Search parameters

Parameter	Value	Formula
<b>Visibility</b>		
Service Area (default)	<input checked="" type="checkbox"/>	=
Top Clearance (mm) (default)	15.0	=
Right Side Clearance (mm) (default)	500.0	=
Left Side Clearance (mm)	500	=
Back Clearance (mm) (default)	100.0	=
<b>Other</b>		
Ceiling Panel (Sold Separately) - Model name	RBC-U32PGP-E	=
Ceiling Panel-Height (mm)	30.0	=
Ceiling Panel-Width (mm)	950.0	=
Ceiling Panel-Depth (mm)	950.0	=
Refrigerant Information	R410A	=
Weight (Kg)	20	=
<b>Identity Data</b>		
Article Description	Standard cassette	=
Article Type	MMU-UP0271HP-E	=
Assembly Code		=
Base Family Version		=
CB-NL Class		=
Content Supplier URL	www.hcltech.com	=
Copyright	©Toshiba / HCL	= "©Toshiba / HCL"
Cost		=
Description	Standard cassette	=
EMCS	4	= "4"
ETIM Article Class	EC001213	= "EC001213"
Family Version		=
GLN		=
GTIN		=
Internal Art. No.		=
Keynote		=
MEPcontent Class	HEATPUMP	= "HEATPUMP"
Manufacturer	Toshiba	= "Toshiba"
Manufacturer Art. No.	MMU-UP0271HP-E	=
Manufacturer URL	https://www.toshiba-carrier.co.jp/global/	=
Model	MMU-UP0271HP-E	=
Product Line	TCTC	= "TCTC"
Revit Version	2017	= "2017"
Stabu Code		=
Type Comments		=
Type Image		=
URL	https://www.toshiba-carrier.co.jp/global/	=
Watermarked By		=
Wholesaler		=

# MMU-UP0301HP-E

## Family Types

Type name: MMU-UP0301HP-E

Search parameters

Parameter	Value	Formula
<b>Materials and Finishes</b>		
Red	Colour RGB-255 000 000	=
White	Colour- RGB -255 255 255	=
<b>Electrical</b>		
MOCP (A)	15	=
MCA (A)	1.09	=
Running current-Cooling	0.43	=
Power consumption-Cooling	0.043	=
Running current-Heating	-	=
Power consumption-Heating	-	=
Frequency	50Hz 220 - 240V	=
Voltage	60Hz 208-220V	=
Starting current	0.59	=
<b>Dimensions</b>		
Height (mm)	256.0	=
Width (mm)	840.0	=
Depth (mm)	840.0	=
Piping diameter (mm)-Gas side	15.9	=
Piping diameter (mm)-Liquid	9.5	=
Drain Pipe Diameter (mm)	VP25 (OD:32)	=
Duct diameters(mm)	-	=
<b>Mechanical - Flow</b>		
Static pressure	-	=
Sound pressure dB(A)-High	38	=
Sound pressure dB(A)-Mid	33	=
Sound pressure dB(A)-Low	30	=
Airflow - High (m3/h)	1320	=
Airflow - Mid (m3/h)	1100	=
Airflow - Low (m3/h)	800	=
Power Consumption - High (W)	43	=
Power Consumption - Mid (W)	30	=
Power Consumption - Low (W)	21	=
<b>Mechanical - Loads</b>		
Seasonal & Rated efficiency	-	=
Part load	-	=
Capacities - Cooling (kW)	9	=
Capacities - Heating (kW)	10	=

## Family Types

Type name: MMU-UP0301HP-E

Search parameters

Parameter	Value	Formula
<b>Visibility</b>		
Service Area (default)	<input type="checkbox"/>	=
Top Clearance (mm) (default)	15.0	=
Right Side Clearance (mm) (default)	500.0	=
Left Side Clearance (mm)	500	=
Back Clearance (mm) (default)	100.0	=
<b>Other</b>		
Ceiling Panel (Sold Separately) - Model name	RBC-U32PGP-E	=
Ceiling Panel-Height (mm)	30.0	=
Ceiling Panel-Width (mm)	950.0	=
Ceiling Panel-Depth (mm)	950.0	=
Refrigerant Information	R410A	=
Weight (Kg)	20	=
<b>Identity Data</b>		
Article Description	Standard cassette	=
Article Type	MMU-UP0301HP-E	=
Assembly Code		=
Base Family Version		=
CB-NL Class		=
Content Supplier URL	www.hcltech.com	=
Copyright	©Toshiba / HCL	= "©Toshiba / HCL"
Cost		=
Description	Standard cassette	=
EMCS	4	= "4"
ETIM Article Class	EC001213	= "EC001213"
Family Version		=
GLN		=
GTIN		=
Internal Art. No.		=
Keynote		=
MEPcontent Class	HEATPUMP	= "HEATPUMP"
Manufacturer	Toshiba	= "Toshiba"
Manufacturer Art. No.	MMU-UP0301HP-E	=
Manufacturer URL	https://www.toshiba-carrier.co.jp/global/	=
Model	MMU-UP0301HP-E	=
Product Line	TCTC	= "TCTC"
Revit Version	2017	= "2017"
Stabu Code		=
Type Comments		=
Type Image		=
URL	https://www.toshiba-carrier.co.jp/global/	=
Watermarked By		=
Wholesaler		=





**Thank You**