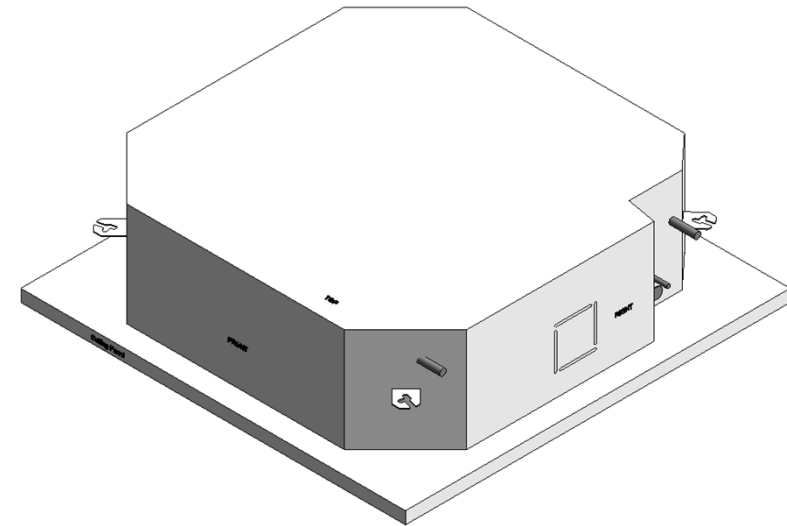
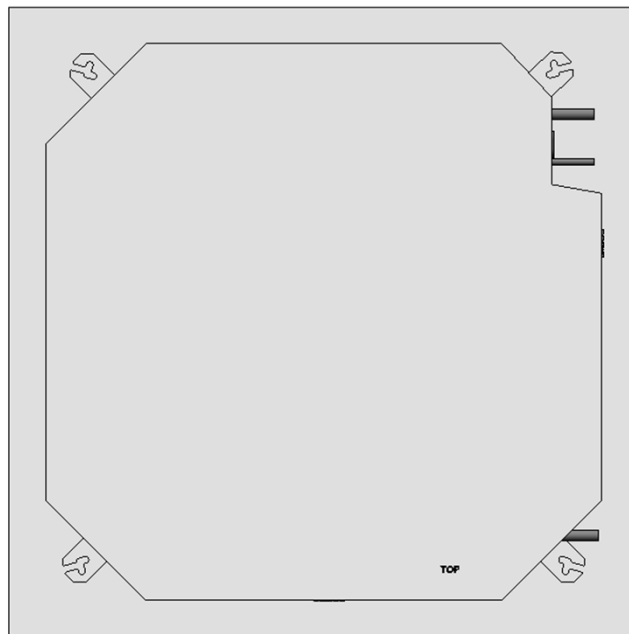
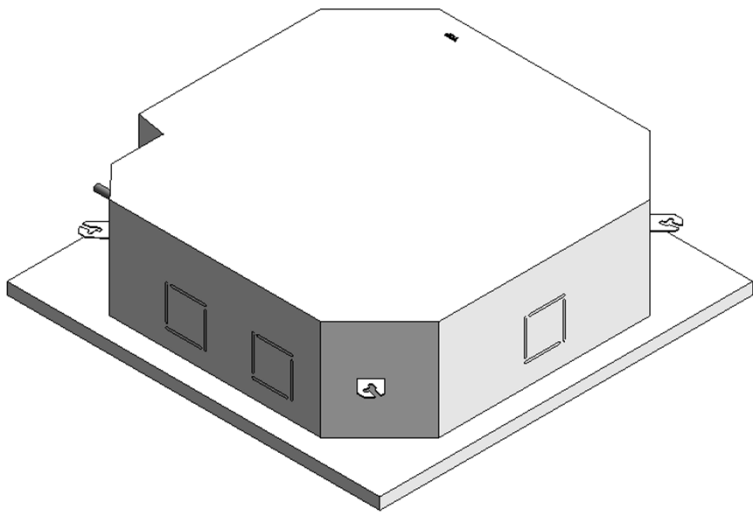
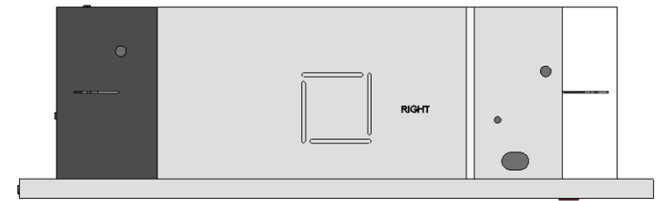
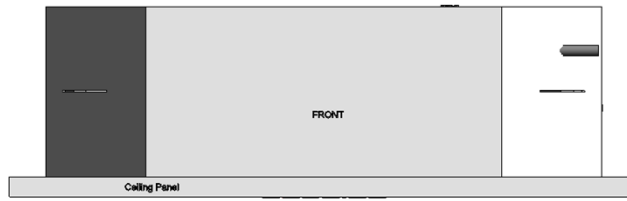
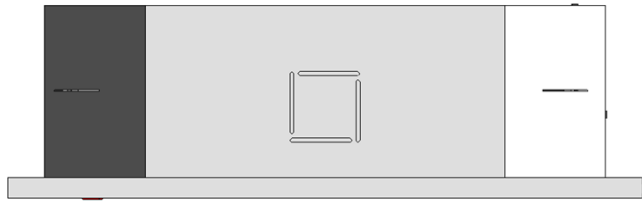


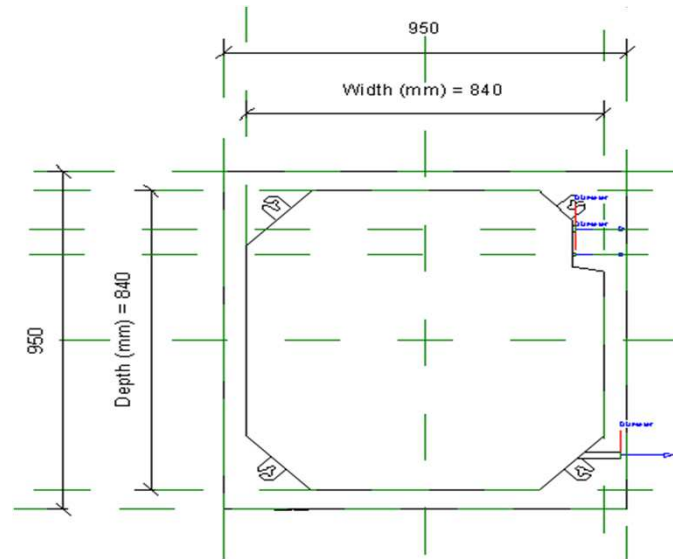
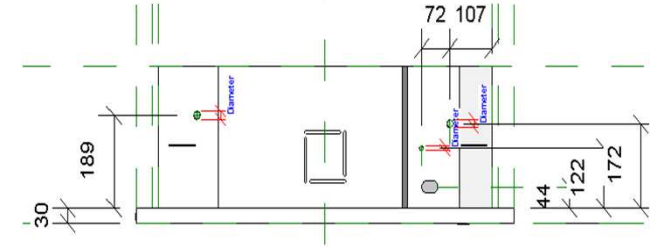
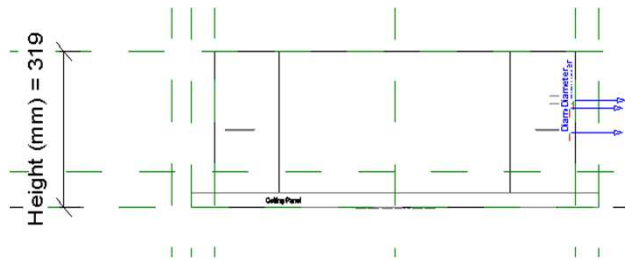
VRF_MMU1HP_36-56

27-01-2021

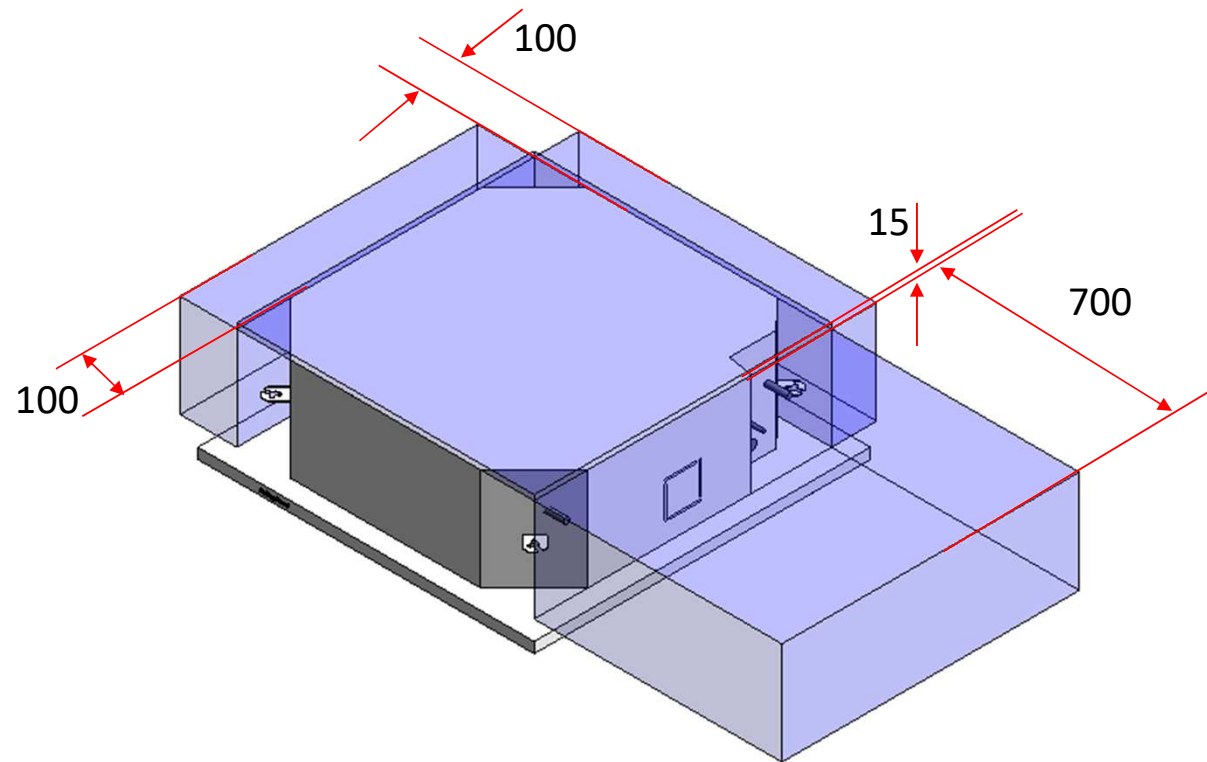
VRF_MMU1HP_36-56



VRF_MMU1HP_36-56



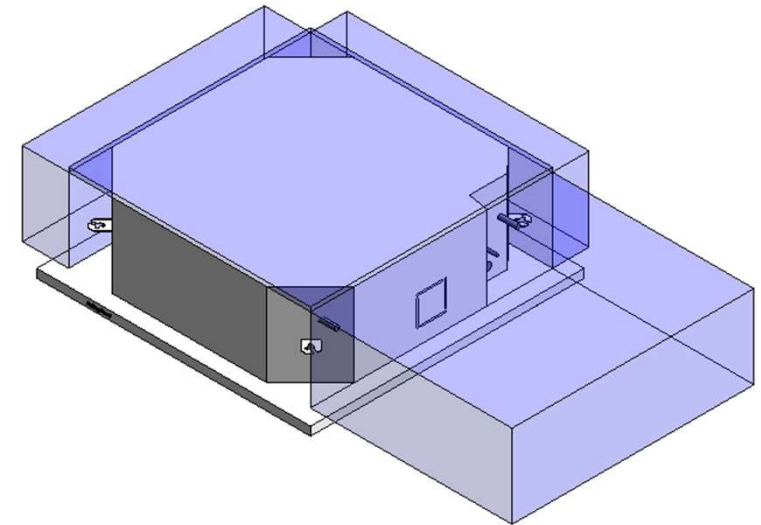
VRF_MMU1HP_36-56_Service Area



VRF_MMU1HP_36-56

Visibility

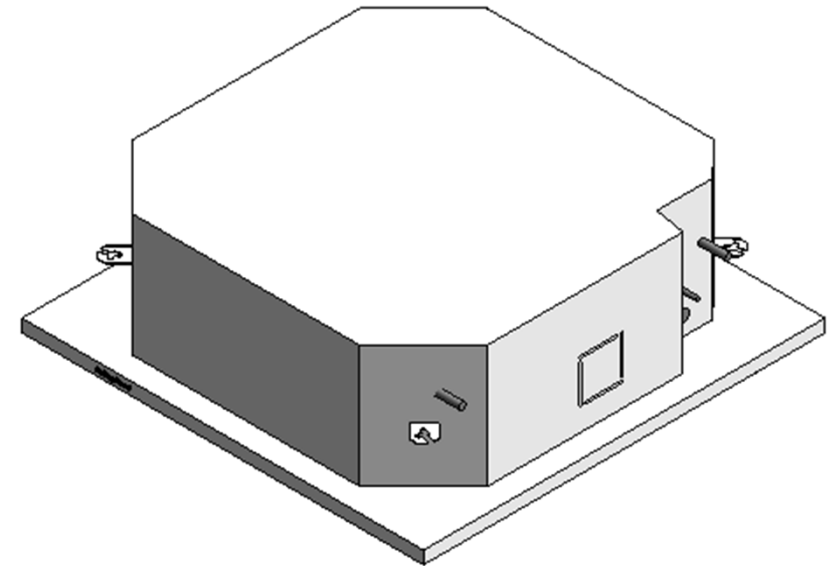
Service Area (default)	<input checked="" type="checkbox"/>
Top Clearance (mm) (default)	15.0
Right Side Clearance (mm) (default)	700.0
Left Side Clearance (mm) (default)	100.0
Back Clearance (mm) (default)	100.0



Service Clearance ON

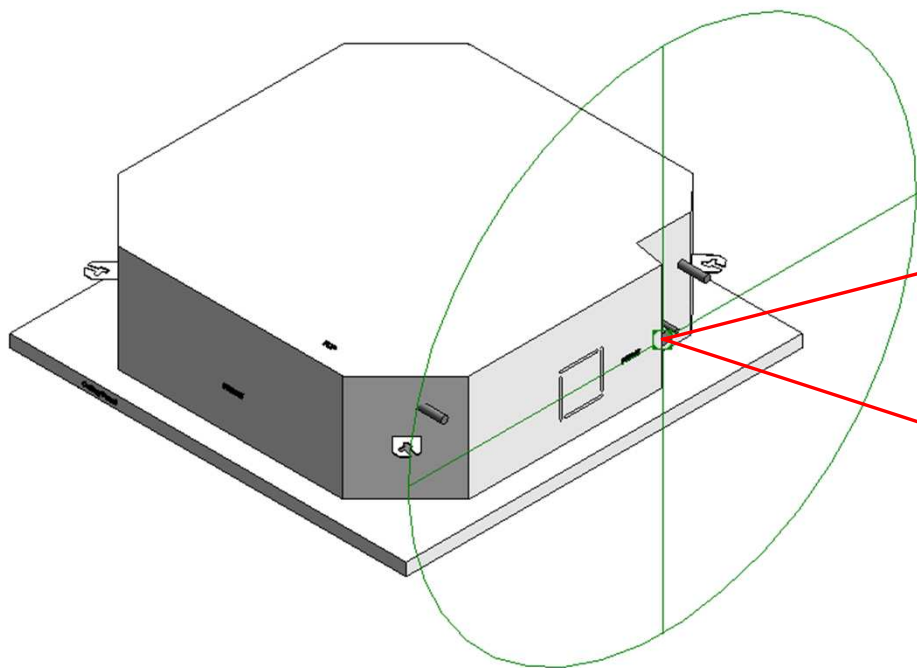
VRF_MMU1HP_36-56

Visibility	
Service Area (default)	<input type="checkbox"/>
Top Clearance (mm) (default)	15.0
Right Side Clearance (mm) (default)	700.0
Left Side Clearance (mm) (default)	100.0
Back Clearance (mm) (default)	100.0



Service Clearance OFF

Electrical Connector



Properties

R

Connector Element (1) Edit Type

Electrical - Loads

System Type	Power - Unbalanced
Number of Poles	1
Power Factor State	Lagging
Load Classification	Other
Load Sub-Classification Motor	<input type="checkbox"/>
Voltage	0.00 V
Apparent Load Phase 1	0.00 VA
Apparent Load Phase 2	0.00 VA
Apparent Load Phase 3	0.00 VA
Power Factor	1.000000

Identity Data

Utility	<input type="checkbox"/>
Connector Description	ELECTRICAL CONNECTION PORT

Properties

R

Connector Element (1) Edit Type

Electrical - Loads

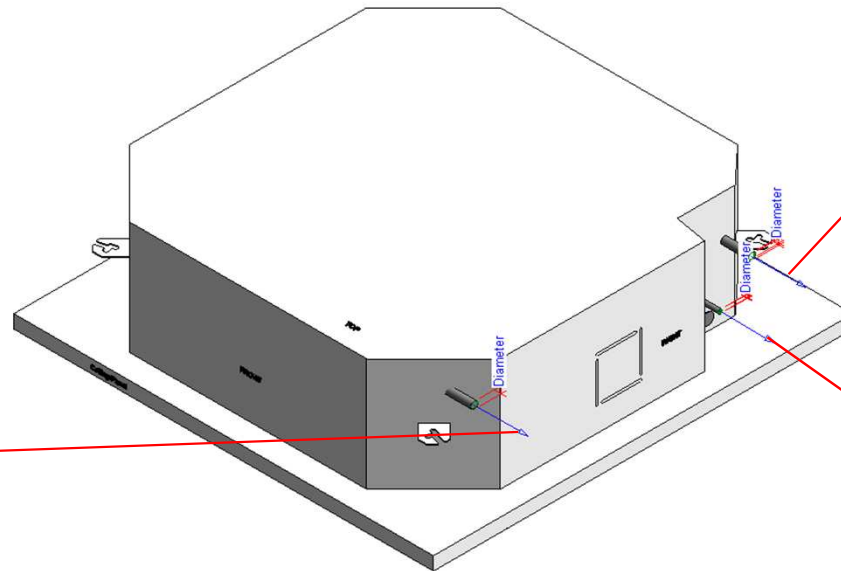
System Type	Controls
-------------	----------

Identity Data

Utility	<input type="checkbox"/>
Connector Description	CONTROL CONNECTION PORT

Pipe Connectors

Properties	
R	
Connector Element (1)	
Dimensions	
Diameter	16.0
Mechanical	
K Coefficient	0.000000
Flow Factor	0.000000
Flow Configuration	Calculated
Flow Direction	Out
Loss Method	Not Defined
Allow Slope Adjustments	<input type="checkbox"/>
System Classification	Vent
Mechanical - Flow	
Flow	0.00 L/s
Pressure Drop	0.00 Pa
Identity Data	
Utility	<input type="checkbox"/>
Connector Description	DRAIN PORT @ 16mm



Properties	
R	
Connector Element (1)	
Dimensions	
Diameter	15.9
Mechanical	
K Coefficient	0.000000
Flow Factor	0.000000
Flow Configuration	Calculated
Flow Direction	Out
Loss Method	Not Defined
Allow Slope Adjustments	<input type="checkbox"/>
System Classification	Hydronic Return
Mechanical - Flow	
Flow	0.00 L/s
Pressure Drop	0.00 Pa
Identity Data	
Utility	<input type="checkbox"/>
Connector Description	HYDRONIC RETURN (GAS) PORT @ 15.9mm

Properties	
R	
Connector Element (1)	
Dimensions	
Diameter	9.5
Mechanical	
K Coefficient	0.000000
Flow Factor	0.000000
Flow Configuration	Calculated
Flow Direction	In
Loss Method	Not Defined
Allow Slope Adjustments	<input type="checkbox"/>
System Classification	Hydronic Supply
Mechanical - Flow	
Flow	0.00 L/s
Pressure Drop	0.00 Pa
Identity Data	
Utility	<input type="checkbox"/>
Connector Description	HYDRONIC SUPPLY (LIQUID) PORT @ 9.5mm

MMU-UP0361HP-E

Family Types

Type name: MMU-UP0361HP-E

Search parameters

Parameter	Value	Formula
Materials and Finishes		
Red	Colour RGB-255 000 000	=
White	Colour- RGB -255 255 255	=
Electrical		
MOCP (A)	15.0	=
MCA (A)	1.44	=
Running current-Cooling	0.73	=
Power consumption-Cooling	0.088	=
Running current-Heating	-	=
Power consumption-Heating	-	=
Frequency (Hz)	50Hz 220 - 240V	=
Voltage (V)	60Hz 208-220V	=
Starting current	0.67	=
Dimensions		
Height (mm)	319.0	=
Width (mm)	840.0	=
Depth (mm)	840.0	=
Piping diameter (mm)-Gas side	15.9	=
Piping diameter (mm)-Liquid side	9.5	=
Drain Pipe Diameter (mm)	VP20 (OD:32)	=
Duct diameters(mm)	-	=
Mechanical - Flow		
Sound pressure - High (dB)	43	=
Sound pressure - Mid (dB)	38	=
Sound pressure - Low (dB)	32	=
Airflow - High (m3/h)	1970	=
Airflow - Mid (m3/h)	1430	=
Airflow - Low (m3/h)	1130	=
Power Consumption - High (W)	88	=
Power Consumption - Mid (W)	45	=
Power Consumption - Low (W)	24	=
Mechanical - Loads		
Seasonal & Rated efficiency	-	=
Part load	-	=
Capacities - Cooling (kW)	11.2	=
Capacities - Heating (kW)	12.5	=

Family Types

Type name: MMU-UP0361HP-E

Search parameters

Parameter	Value	Formula
Visibility		
Service Area (default)	<input type="checkbox"/>	=
Top Clearance (mm) (default)	15.0	=
Right Side Clearance (mm) (default)	700.0	=
Left Side Clearance (mm) (default)	100.0	=
Back Clearance (mm) (default)	100.0	=
Other		
Ceiling Panel (Sold Separately) - Model name	RBC-U32PGP-E	=
Ceiling Panel-Height (mm)	30.0	=
Ceiling Panel-Width (mm)	950.0	=
Ceiling Panel-Depth (mm)	950.0	=
Refrigerant Information	R410A	=
Weight (Kg)	25	=
Identity Data		
Article Description	Standard cassette	=
Article Type	MMU-UP0361HP-E	=
Assembly Code		=
Base Family Version		=
CB-NL Class		=
Content Supplier URL	www.hcltech.com	=
Copyright	©Toshiba / HCL	= "©Toshiba / HCL"
Cost		=
Description	Standard cassette	=
EMCS	4	= "4"
ETIM Article Class	EC001213	= "EC001213"
Family Version		=
GLN		=
GTIN		=
Internal Art. No.		=
Keynote		=
MEPcontent Class	HEATPUMP	= "HEATPUMP"
Manufacturer	Toshiba	= "Toshiba"
Manufacturer Art. No.	MMU-UP0361HP-E	=
Manufacturer URL	https://www.toshiba-carrier.co.jp/global/	=
Model	MMU-UP0361HP-E	=
Product Line	TCTC	= "TCTC"
Revit Version		=
Stabu Code		=
Type Comments		=
Type Image		=
URL	https://www.toshiba-carrier.co.jp/global/	=
Watermarked By		=
Wholesaler		=

MMU-UP0481HP-E

Family Types

Type name: MMU-UP0481HP-E

Search parameters

Parameter	Value	Formula
Materials and Finishes		
Red	Colour RGB-255 000 000	=
White	Colour- RGB -255 255 255	=
Electrical		
MOCP (A)	15.0	=
MCA (A)	1.44	=
Running current-Cooling	0.88	=
Power consumption-Cooling	0.112	=
Running current-Heating	-	=
Power consumption-Heating	-	=
Frequency (Hz)	50Hz 220 - 240V	=
Voltage (V)	60Hz 208-220V	=
Starting current	1.23	=
Dimensions		
Height (mm)	319.0	=
Width (mm)	840.0	=
Depth (mm)	840.0	=
Piping diameter (mm)-Gas side	15.9	=
Piping diameter (mm)-Liquid side	9.5	=
Drain Pipe Diameter (mm)	VP20 (OD:32)	=
Duct diameters(mm)	-	=
Mechanical - Flow		
Sound pressure - High (dB)	46	=
Sound pressure - Mid (dB)	38	=
Sound pressure - Low (dB)	33	=
Airflow - High (m3/h)	2130	=
Airflow - Mid (m3/h)	1430	=
Airflow - Low (m3/h)	1130	=
Power Consumption - High (W)	112	=
Power Consumption - Mid (W)	45	=
Power Consumption - Low (W)	27	=
Mechanical - Loads		
Seasonal & Rated efficiency	-	=
Part load	-	=
Capacities - Cooling (kW)	14	=
Capacities - Heating (kW)	16	=

Family Types

Type name: MMU-UP0481HP-E

Search parameters

Parameter	Value	Formula
Visibility		
Service Area (default)	<input type="checkbox"/>	=
Top Clearance (mm) (default)	15.0	=
Right Side Clearance (mm) (default)	700.0	=
Left Side Clearance (mm) (default)	100.0	=
Back Clearance (mm) (default)	100.0	=
Other		
Ceiling Panel (Sold Separately) - Model name	RBC-U32PGP-E	=
Ceiling Panel-Height (mm)	30.0	=
Ceiling Panel-Width (mm)	950.0	=
Ceiling Panel-Depth (mm)	950.0	=
Refrigerant information	R410A	=
Weight (Kg)	25	=
Identity Data		
Article Description	Standard cassette	=
Article Type	MMU-UP0481HP-E	=
Assembly Code		=
Base Family Version		=
CB-NL Class		=
Content Supplier URL	www.hcltech.com	=
Copyright	©Toshiba / HCL	= "©Toshiba / HCL"
Cost		=
Description	Standard cassette	=
EMCS	4	= "4"
ETIM Article Class	EC001213	= "EC001213"
Family Version		=
GLN		=
GTIN		=
Internal Art. No.		=
Keynote		=
MEPcontent Class	HEATPUMP	= "HEATPUMP"
Manufacturer	Toshiba	= "Toshiba"
Manufacturer Art. No.	MMU-UP0481HP-E	=
Manufacturer URL	https://www.toshiba-carrier.co.jp/global/	=
Model	MMU-UP0481HP-E	=
Product Line	TCTC	= "TCTC"
Revit Version		=
Stabu Code		=
Type Comments		=
Type Image		=
URL	https://www.toshiba-carrier.co.jp/global/	=
Watermarked By		=
Wholesaler		=

MMU-UP0561HP-E

Family Types

Type name: MMU-UP0561HP-E

Search parameters

Parameter	Value	Formula
Materials and Finishes		
Red	Colour RGB-255 000 000	=
White	Colour- RGB -255 255 255	=
Electrical		
MOCP (A)	15.0	=
MCA (A)	1.44	=
Running current-Cooling	0.88	=
Power consumption-Cooling	0.112	=
Running current-Heating	-	=
Power consumption-Heating	-	=
Frequency (Hz)	50Hz 220 - 240V	=
Voltage (V)	60Hz 208-220V	=
Starting current	1.26	=
Dimensions		
Height (mm)	319.0	=
Width (mm)	840.0	=
Depth (mm)	840.0	=
Piping diameter (mm)-Gas side	15.9	=
Piping diameter (mm)-Liquid side	9.5	=
Drain Pipe Diameter (mm)	VP20 (OD:32)	=
Duct diameters(mm)	-	=
Mechanical - Flow		
Sound pressure - High (dB)	46	=
Sound pressure - Mid (dB)	40	=
Sound pressure - Low (dB)	33	=
Airflow - High (m3/h)	2130	=
Airflow - Mid (m3/h)	1520	=
Airflow - Low (m3/h)	1230	=
Power Consumption - High (W)	112	=
Power Consumption - Mid (W)	51	=
Power Consumption - Low (W)	32	=
Mechanical - Loads		
Seasonal & Rated efficiency	-	=
Part load	-	=
Capacities - Cooling (kW)	16	=
Capacities - Heating (kW)	18	=

Family Types

Type name: MMU-UP0561HP-E

Search parameters

Parameter	Value	Formula
Visibility		
Service Area (default)	<input type="checkbox"/>	=
Top Clearance (mm) (default)	15.0	=
Right Side Clearance (mm) (default)	700.0	=
Left Side Clearance (mm) (default)	100.0	=
Back Clearance (mm) (default)	100.0	=
Other		
Ceiling Panel (Sold Separately) - Model name	RBC-U32PGP-E	=
Ceiling Panel-Height (mm)	30.0	=
Ceiling Panel-Width (mm)	950.0	=
Ceiling Panel-Depth (mm)	950.0	=
Refrigerant Information	R410A	=
Weight (Kg)	25	=
Identity Data		
Article Description	Standard cassette	=
Article Type	MMU-UP0561HP-E	=
Assembly Code		=
Base Family Version		=
CB-NL Class		=
Content Supplier URL	www.hcltech.com	=
Copyright	©Toshiba / HCL	= "©Toshiba / HCL"
Cost		=
Description	Standard cassette	=
EMCS	4	= "4"
ETIM Article Class	EC001213	= "EC001213"
Family Version		=
GLN		=
GTIN		=
Internal Art. No.		=
Keynote		=
MEPcontent Class	HEATPUMP	= "HEATPUMP"
Manufacturer	Toshiba	= "Toshiba"
Manufacturer Art. No.	MMU-UP0561HP-E	=
Manufacturer URL	https://www.toshiba-carrier.co.jp/global/	=
Model	MMU-UP0561HP-E	=
Product Line	TCTC	= "TCTC"
Revit Version		=
Stabu Code		=
Type Comments		=
Type Image		=
URL	https://www.toshiba-carrier.co.jp/global/	=
Watermarked By		=
Wholesaler		=



Thank You