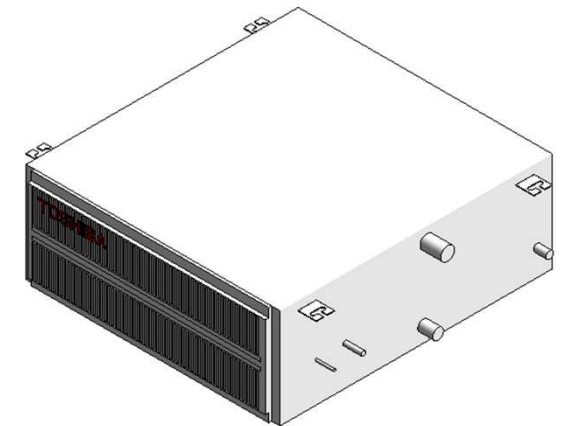
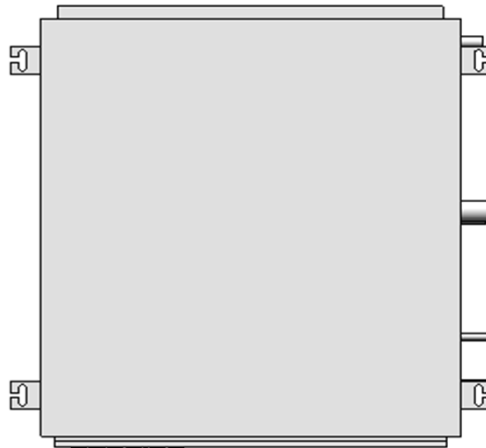
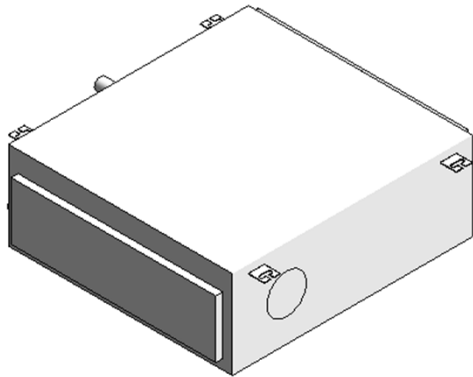
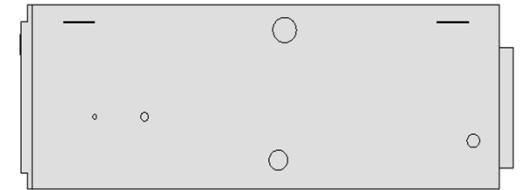
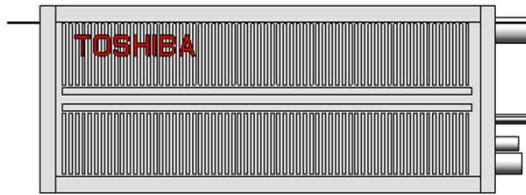
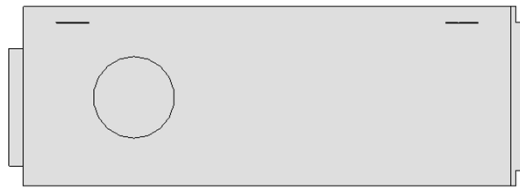


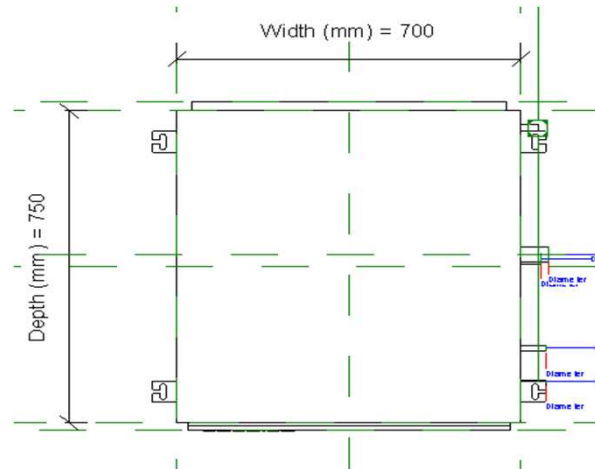
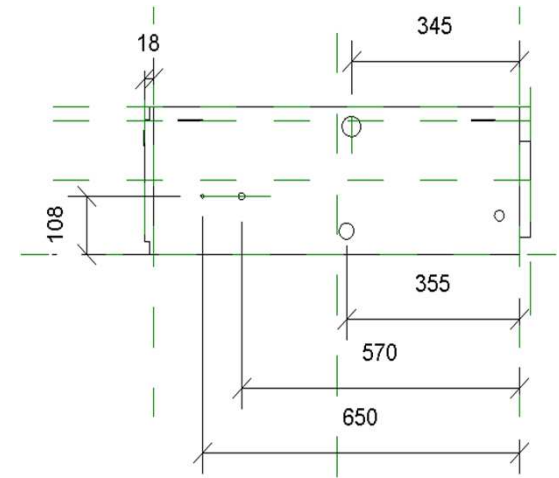
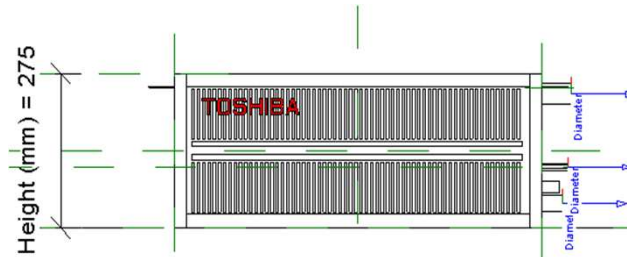
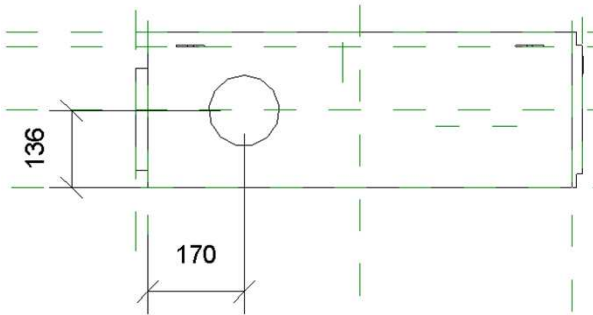
VRF_MMD1BHP_5-18

14-01-2021

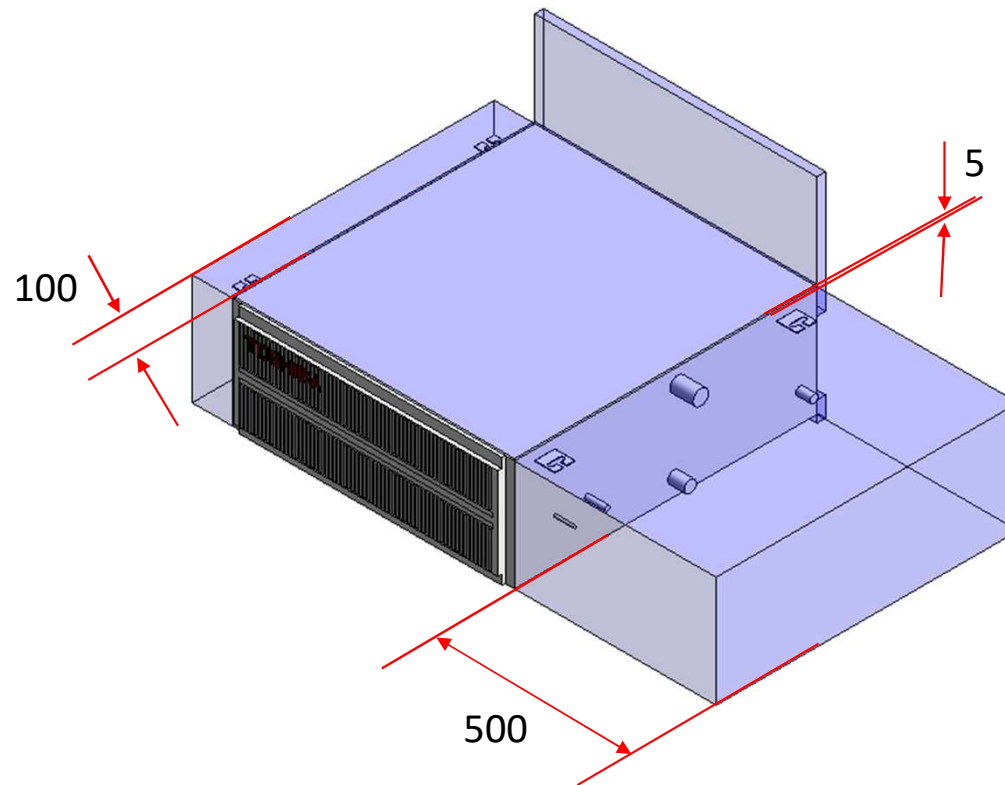
VRF_MMD1BHP_5-18



VRF_MMD1BHP_5-18

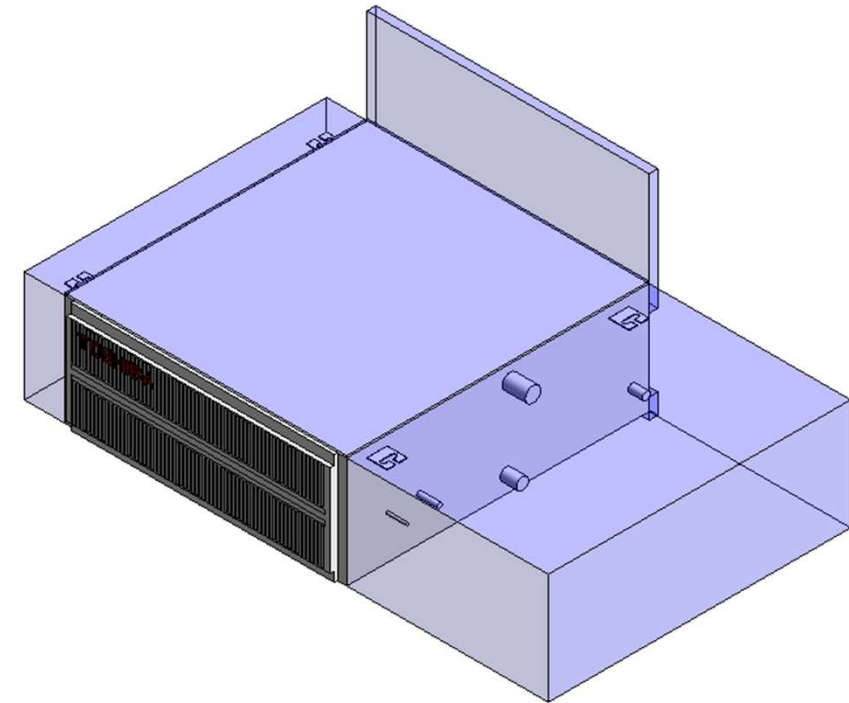


VRF_MMD1BHP_5-18_Service Area



VRF_MMD1BHP_5-18

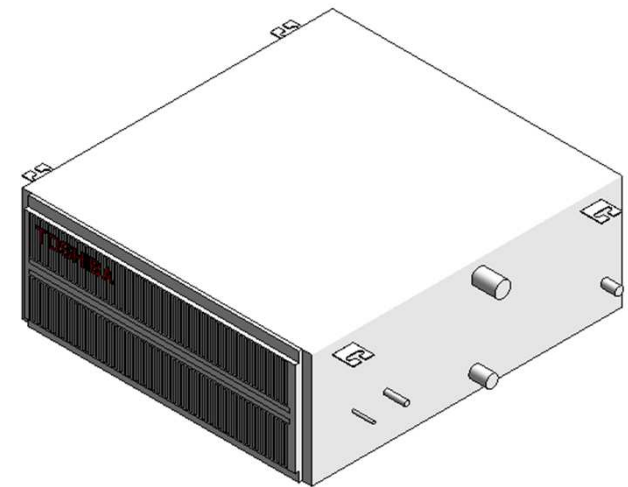
Visibility	
Service Area (default)	<input checked="" type="checkbox"/>
Top Clearance (default)	5.0
Right Side Clearance (default)	500.0
Left Side Clearance (default)	100.0
Rear side (Under air intake) (default)	50.0
Rear side (Back air intake) (default)	300.0



Service Clearance ON

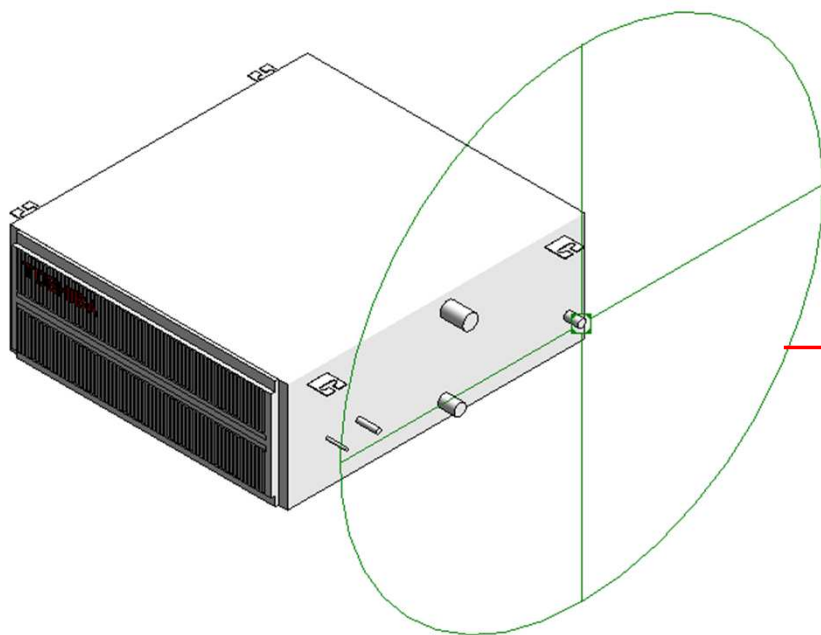
VRF_MMD1BHP_5-18

Visibility	
Service Area (default)	<input type="checkbox"/>
Top Clearance (default)	5.0
Right Side Clearance (default)	500.0
Left Side Clearance (default)	100.0
Rear side (Under air intake) (default)	50.0
Rear side (Back air intake) (default)	300.0



Service Clearance OFF

Electrical Connector



Properties

R

Connector Element (1) Edit Type

Electrical - Loads

System Type	Power - Unbalanced
Number of Poles	1
Power Factor State	Lagging
Load Classification	Other
Load Sub-Classification Motor	<input type="checkbox"/>
Voltage	0.00 V
Apparent Load Phase 1	0.00 VA
Apparent Load Phase 2	0.00 VA
Apparent Load Phase 3	0.00 VA
Power Factor	1.000000

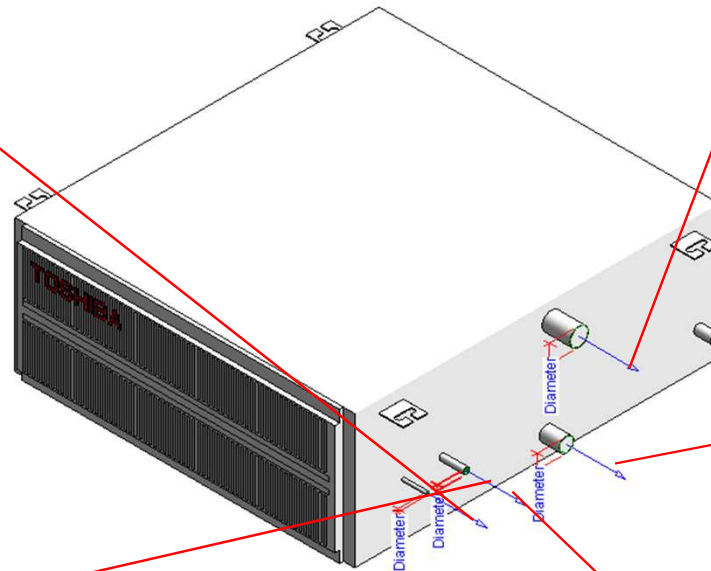
Identity Data

Utility	<input type="checkbox"/>
Connector Description	ELECTRICAL CONNECTOR

Pipe Connectors

Properties	
R	
Connector Element (1)	
Dimensions	
Diameter	6.4
Mechanical	
K Coefficient	0.000000
Flow Factor	0.000000
Flow Configuration	Calculated
Flow Direction	In
Loss Method	Not Defined
Allow Slope Adjustments	<input type="checkbox"/>
System Classification	Hydronic Supply
Mechanical - Flow	
Flow	0.00 L/s
Pressure Drop	0.00 Pa
Identity Data	
Utility	<input type="checkbox"/>
Connector Description	Refrigerant pipe connecting port-Liquid side

Properties	
R	
Connector Element (1)	
Dimensions	
Diameter	12.7
Mechanical	
K Coefficient	0.000000
Flow Factor	0.000000
Flow Configuration	Calculated
Flow Direction	Out
Loss Method	Not Defined
Allow Slope Adjustments	<input type="checkbox"/>
System Classification	Hydronic Return
Mechanical - Flow	
Flow	0.00 L/s
Pressure Drop	0.00 Pa
Identity Data	
Utility	<input type="checkbox"/>
Connector Description	Refrigerant pipe connecting port-Gas side



Properties	
R	
Connector Element (1)	
Dimensions	
Diameter	38.0
Mechanical	
K Coefficient	0.000000
Flow Factor	0.000000
Flow Configuration	Calculated
Flow Direction	Out
Loss Method	Not Defined
Allow Slope Adjustments	<input type="checkbox"/>
System Classification	Vent
Mechanical - Flow	
Flow	0.00 L/s
Pressure Drop	0.00 Pa
Identity Data	
Utility	<input type="checkbox"/>
Connector Description	Drain pipe connecting port

Properties	
R	
Connector Element (1)	
Dimensions	
Diameter	30.0
Mechanical	
K Coefficient	0.000000
Flow Factor	0.000000
Flow Configuration	Calculated
Flow Direction	Out
Loss Method	Not Defined
Allow Slope Adjustments	<input type="checkbox"/>
System Classification	Vent
Mechanical - Flow	
Flow	0.00 L/s
Pressure Drop	0.00 Pa
Identity Data	
Utility	<input type="checkbox"/>
Connector Description	Drain pipe connecting port

Properties	
R	
Connector Element (1)	
Dimensions	
Diameter	9.5
Mechanical	
K Coefficient	0.000000
Flow Factor	0.000000
Flow Configuration	Calculated
Flow Direction	Out
Loss Method	Not Defined
Allow Slope Adjustments	<input type="checkbox"/>
System Classification	Hydronic Return
Mechanical - Flow	
Flow	0.00 L/s
Pressure Drop	0.00 Pa
Identity Data	
Utility	<input type="checkbox"/>
Connector Description	Refrigerant pipe connecting port-Gas side

MMD-UP0051BHP-E

Family Types

Type name: MMD-UP0051BHP-E

Search parameters

Parameter	Value	Formula
Materials and Finishes		
Red	Colour RGB-250 000 000	=
White	Colour RGB-255 255 255	=
Electrical		
MOCP (A)	15	=
MCA (A)	-	=
Running current-Cooling (A)	0.35	=
Power consumption-Cooling (Kw)	0.055	=
Running current-Heating	-	=
Power consumption-Heating	-	=
Frequency (Hz)	50Hz 220 - 240V	=
Voltage (V)	60Hz 220V	=
Starting current	0.75	=
Dimensions		
Height (mm)	275.0	=
Width (mm)	700.0	=
Depth (mm)	750.0	=
Piping diameter Gas (mm)	9.5	=
Piping diameter Liquid (mm)	6.4	=
Drain pipe(mm)	VP25(OD:32mm)	=
Duct diameters(mm)	-	=
Mechanical - Flow		
Static pressure Pa	30-40-50-65-80-100-120	=
Factory default	30	=
Sound pressure dB (A)- High	29	=
Sound pressure dB (A)- Mid	26	=
Sound pressure dB (A)- Low	23	=
Airflow m3/h- High	540	=
Airflow m3/h- Mid	450	=
Airflow m3/h-Low	360	=
Power Consumption W- High	55	=
Power Consumption W- Mid	-	=
Power Consumption W- Low	-	=
Mechanical - Loads		
Seasonal and Rated Efficiency	-	=
Part Load	-	=
Capacities KW - Cooling	1.7	=
Capacities KW - Heating	1.9	=
Energy Analysis		
Energy class	-	=
Capacity	-	=
Rated efficiency	-	=

Family Types

Type name: MMD-UP0051BHP-E

Search parameters

Parameter	Value	Formula
Visibility		
Service Area (default)	<input type="checkbox"/>	=
Top Clearance (default)	5.0	=
Right Side Clearance (default)	500.0	=
Left Side Clearance (default)	100.0	=
Rear side (Under air intake) (default)	50.0	=
Rear side (Back air intake) (default)	300.0	=
Other		
Sold separately parts-Spigot Shaped Flange	TCB-SF56C6BE	=
Refrigerant information	R410A	=
Weight (Kg)	23	=
Identity Data		
Article Description	Ducted standard	=
Article Type	MMD-UP0051BHP-E	=
Base Family Version		=
CB-NL Class		=
Content Supplier URL	www.hcltech.com	=
Copyright	©Toshiba / HCL	= "©Toshiba / HCL"
Custom	<input checked="" type="checkbox"/>	=
EMCS	4	= "4"
ETIM Article Class	EC001213	= "EC001213"
Family Version		=
GLN		=
GTIN		=
Internal Art. No.		=
MEPcontent Class	HEATPUMP	= "HEATPUMP"
Manufacturer Art. No.	MMD-UP0051BHP-E	=
Manufacturer URL	https://www.toshiba-carrier.co.jp/global/	=
Product Line	TCTC	= "TCTC"
Revit Version	2017	= "2017"
Stabu Code		=
Type Image		=
Keynote		=
Model	MMD-UP0051BHP-E	=
Manufacturer	Toshiba	= "Toshiba"
Type Comments		=
URL	https://www.toshiba-carrier.co.jp/global/	=
Description	Ducted standard	=
Assembly Code		=
Cost		=
Watermarked By		=
Wholesaler		=
Wholesaler Art. No.		=

MMD-UP0071BHP-E

Family Types

Type name: MMD-UP0071BHP-E

Search parameters

Parameter	Value	Formula
Materials and Finishes		
Red	Colour RGB-250 000 000	=
White	Colour RGB-255 255 255	=
Electrical		
MOCP (A)	15	=
MCA (A)	-	=
Running current-Cooling (A)	0.35	=
Power consumption-Cooling (Kw)	0.055	=
Running current-Heating	-	=
Power consumption-Heating	-	=
Frequency (Hz)	50Hz 220 - 240V	=
Voltage (V)	60Hz 220V	=
Starting current	0.45	=
Dimensions		
Height (mm)	275.0	=
Width (mm)	700.0	=
Depth (mm)	750.0	=
Piping diameter Gas (mm)	9.5	=
Piping diameter Liquid (mm)	6.4	=
Drain pipe(mm)	VP25(OD:32mm)	=
Duct diameters(mm)	-	=
Mechanical - Flow		
Static pressure Pa	30-40-50-65-80-100-120	=
Factory default	30	=
Sound pressure dB (A)- High	29	=
Sound pressure dB (A)- Mid	26	=
Sound pressure dB (A)- Low	23	=
Airflow m3/h- High	540	=
Airflow m3/h- Mid	450	=
Airflow m3/h-Low	360	=
Power Consumption W- High	55	=
Power Consumption W- Mid	-	=
Power Consumption W- Low	-	=
Mechanical - Loads		
Seasonal and Rated Efficiency	-	=
Part Load	-	=
Capacities KW - Cooling	2.2	=
Capacities KW - Heating	2.5	=
Energy Analysis		
Energy class	-	=
Capacity	-	=
Rated efficiency	-	=

Family Types

Type name: MMD-UP0071BHP-E

Search parameters

Parameter	Value	Formula
Visibility		
Service Area (default)	<input checked="" type="checkbox"/>	=
Top Clearance (default)	5.0	=
Right Side Clearance (default)	500.0	=
Left Side Clearance (default)	100.0	=
Rear side (Under air intake) (default)	50.0	=
Rear side (Back air intake) (default)	300.0	=
Other		
Sold separately parts-Spigot Shaped Flange	TCB-SF56C6BE	=
Refrigerant information	R410A	=
Weight (Kg)	23	=
Identity Data		
Article Description	Ducted standard	=
Article Type	MMD-UP0071BHP-E	=
Base Family Version		=
CB-NL Class		=
Content Supplier URL	www.hcltech.com	=
Copyright	©Toshiba / HCL	= "©Toshiba / HCL"
Custom	<input checked="" type="checkbox"/>	=
EMCS	4	= "4"
ETIM Article Class	EC001213	= "EC001213"
Family Version		=
GLN		=
GTIN		=
Internal Art. No.		=
MEPcontent Class	HEATPUMP	= "HEATPUMP"
Manufacturer Art. No.	MMD-UP0071BHP-E	=
Manufacturer URL	https://www.toshiba-carrier.co.jp/global/	=
Product Line	TCTC	= "TCTC"
Revit Version	2017	= "2017"
Stabu Code		=
Type Image		=
Keynote		=
Model	MMD-UP0071BHP-E	=
Manufacturer	Toshiba	= "Toshiba"
Type Comments		=
URL	https://www.toshiba-carrier.co.jp/global/	=
Description	Ducted standard	=
Assembly Code		=
Cost		=
Watermarked By		=
Wholesaler		=
Wholesaler Art. No.		=

MMD-UP0091BHP-E

Family Types

Type name: MMD-UP0091BHP-E

Search parameters

Parameter	Value	Formula
Materials and Finishes		
Red	Colour RGB-250 000 000	=
White	Colour RGB-255 255 255	=
Electrical		
MOCP (A)	15	=
MCA (A)	-	=
Running current-Cooling (A)	0.38	=
Power consumption-Cooling (Kw)	0.06	=
Running current-Heating	-	=
Power consumption-Heating	-	=
Frequency (Hz)	50Hz 220 - 240V	=
Voltage (V)	60Hz 220V	=
Starting current	0.64	=
Dimensions		
Height (mm)	275.0	=
Width (mm)	700.0	=
Depth (mm)	750.0	=
Piping diameter Gas (mm)	9.5	=
Piping diameter Liquid (mm)	6.4	=
Drain pipe(mm)	VP25(OD:32mm)	=
Duct diameters(mm)	-	=
Mechanical - Flow		
Static pressure Pa	30-40-50-65-80-100-120	=
Factory default	30	=
Sound pressure dB (A)- High	30	=
Sound pressure dB (A)- Mid	26	=
Sound pressure dB (A)- Low	23	=
Airflow m3/h- High	570	=
Airflow m3/h- Mid	480	=
Airflow m3/h-Low	390	=
Power Consumption W- High	60	=
Power Consumption W- Mid	-	=
Power Consumption W- Low	-	=
Mechanical - Loads		
Seasonal and Rated Efficiency	-	=
Part Load	-	=
Capacities KW - Cooling	2.8	=
Capacities KW - Heating	3.2	=
Energy Analysis		
Energy class	-	=
Capacity	-	=
Rated efficiency	-	=

Family Types

Type name: MMD-UP0091BHP-E

Search parameters

Parameter	Value	Formula
Visibility		
Service Area (default)	<input checked="" type="checkbox"/>	=
Top Clearance (default)	5.0	=
Right Side Clearance (default)	500.0	=
Left Side Clearance (default)	100.0	=
Rear side (Under air intake) (default)	50.0	=
Rear side (Back air intake) (default)	300.0	=
Other		
Sold separately parts-Spigot Shaped Flange	TCB-SF56C6BE	=
Refrigerant information	R410A	=
Weight (Kg)	23	=
Identity Data		
Article Description	Ducted standard	=
Article Type	MMD-UP0091BHP-E	=
Base Family Version		=
CB-NL Class		=
Content Supplier URL	www.hcltech.com	=
Copyright	©Toshiba / HCL	= "©Toshiba / HCL"
Custom	<input checked="" type="checkbox"/>	=
EMCS	4	= "4"
ETIM Article Class	EC001213	= "EC001213"
Family Version		=
GLN		=
GTIN		=
Internal Art. No.		=
MEPcontent Class	HEATPUMP	= "HEATPUMP"
Manufacturer Art. No.	MMD-UP0091BHP-E	=
Manufacturer URL	https://www.toshiba-carrier.co.jp/global/	=
Product Line	TCTC	= "TCTC"
Revit Version	2017	= "2017"
Stabu Code		=
Type Image		=
Keynote		=
Model	MMD-UP0091BHP-E	=
Manufacturer	Toshiba	= "Toshiba"
Type Comments		=
URL	https://www.toshiba-carrier.co.jp/global/	=
Description	Ducted standard	=
Assembly Code		=
Cost		=
Watermarked By		=
Wholesaler		=
Wholesaler Art. No.		=

MMD-UP0121BHP-E

Family Types

Type name: MMD-UP0121BHP-E

Search parameters

Parameter	Value	Formula
Materials and Finishes		
Red	Colour RGB-250 000 000	=
White	Colour RGB-255 255 255	=
Electrical		
MOCP (A)	15	=
MCA (A)	-	=
Running current-Cooling (A)	0.38	=
Power consumption-Cooling (Kw)	0.06	=
Running current-Heating	-	=
Power consumption-Heating	-	=
Frequency (Hz)	50Hz 220 - 240V	=
Voltage (V)	60Hz 220V	=
Starting current	0.5	=
Dimensions		
Height (mm)	275.0	=
Width (mm)	700.0	=
Depth (mm)	750.0	=
Piping diameter Gas (mm)	9.5	=
Piping diameter Liquid (mm)	6.4	=
Drain pipe(mm)	VP25(OD:32mm)	=
Duct diameters(mm)	-	=
Mechanical - Flow		
Static pressure Pa	30-40-50-65-80-100-120	=
Factory default	30	=
Sound pressure dB (A)- High	30	=
Sound pressure dB (A)- Mid	26	=
Sound pressure dB (A)- Low	23	=
Airflow m3/h- High	570	=
Airflow m3/h- Mid	480	=
Airflow m3/h-Low	390	=
Power Consumption W- High	60	=
Power Consumption W- Mid	-	=
Power Consumption W- Low	-	=
Mechanical - Loads		
Seasonal and Rated Efficiency	-	=
Part Load	-	=
Capacities KW - Cooling	3.6	=
Capacities KW - Heating	4	=
Energy Analysis		
Energy class	-	=
Capacity	-	=
Rated efficiency	-	=

Family Types

Type name: MMD-UP0121BHP-E

Search parameters

Parameter	Value	Formula
Visibility		
Service Area (default)	<input checked="" type="checkbox"/>	=
Top Clearance (default)	5.0	=
Right Side Clearance (default)	500.0	=
Left Side Clearance (default)	100.0	=
Rear side (Under air intake) (default)	50.0	=
Rear side (Back air intake) (default)	300.0	=
Other		
Sold separately parts-Spigot Shaped Flange	TCB-SF56C6BE	=
Refrigerant information	R410A	=
Weight (Kg)	23	=
Identity Data		
Article Description	Ducted standard	=
Article Type	MMD-UP0121BHP-E	=
Base Family Version		=
CB-NL Class		=
Content Supplier URL	www.hcltech.com	=
Copyright	©Toshiba / HCL	= "©Toshiba / HCL"
Custom	<input checked="" type="checkbox"/>	=
EMCS	4	= "4"
ETIM Article Class	EC001213	= "EC001213"
Family Version		=
GLN		=
GTIN		=
Internal Art. No.		=
MEPcontent Class	HEATPUMP	= "HEATPUMP"
Manufacturer Art. No.	MMD-UP0121BHP-E	=
Manufacturer URL	https://www.toshiba-carrier.co.jp/global/	=
Product Line	TCTC	= "TCTC"
Revit Version	2017	= "2017"
Stabu Code		=
Type Image		=
Keynote		=
Model	MMD-UP0121BHP-E	=
Manufacturer	Toshiba	= "Toshiba"
Type Comments		=
URL	https://www.toshiba-carrier.co.jp/global/	=
Description	Ducted standard	=
Assembly Code		=
Cost		=
Watermarked By		=
Wholesaler		=
Wholesaler Art. No.		=

MMD-UP0151BHP-E

Family Types

Type name: MMD-UP0151BHP-E

Search parameters

Parameter	Value	Formula
Materials and Finishes		
Red	Colour RGB-250 000 000	=
White	Colour RGB-255 255 255	=
Electrical		
MOCP (A)	15	=
MCA (A)	-	=
Running current-Cooling (A)	0.7	=
Power consumption-Cooling (Kw)	0.11	=
Running current-Heating	-	=
Power consumption-Heating	-	=
Frequency (Hz)	50Hz 220 - 240V	=
Voltage (V)	60Hz 220V	=
Starting current	1.24	=
Dimensions		
Height (mm)	275.0	=
Width (mm)	700.0	=
Depth (mm)	750.0	=
Piping diameter Gas (mm)	12.7	=
Piping diameter Liquid (mm)	6.4	=
Drain pipe(mm)	VP25(OD:32mm)	=
Duct diameters(mm)	-	=
Mechanical - Flow		
Static pressure Pa	30-40-50-65-80-100-120	=
Factory default	30	=
Sound pressure dB (A)- High	33	=
Sound pressure dB (A)- Mid	29	=
Sound pressure dB (A)- Low	25	=
Airflow m3/h- High	920	=
Airflow m3/h- Mid	660	=
Airflow m3/h-Low	540	=
Power Consumption W- High	110	=
Power Consumption W- Mid	-	=
Power Consumption W- Low	-	=
Mechanical - Loads		
Seasonal and Rated Efficiency	-	=
Part Load	-	=
Capacities KW - Cooling	4.5	=
Capacities KW - Heating	5	=
Energy Analysis		
Energy class	-	=
Capacity	-	=
Rated efficiency	-	=

Family Types

Type name: MMD-UP0151BHP-E

Search parameters

Parameter	Value	Formula
Visibility		
Service Area (default)	<input checked="" type="checkbox"/>	=
Top Clearance (default)	5.0	=
Right Side Clearance (default)	500.0	=
Left Side Clearance (default)	100.0	=
Rear side (Under air intake) (default)	50.0	=
Rear side (Back air intake) (default)	300.0	=
Other		
Sold separately parts-Spigot Shaped Flange	TCB-SF56C6BE	=
Refrigerant information	R410A	=
Weight (Kg)	23	=
Identity Data		
Article Description	Ducted standard	=
Article Type	MMD-UP0151BHP-E	=
Base Family Version		=
CB-NL Class		=
Content Supplier URL	www.hcltech.com	=
Copyright	©Toshiba / HCL	= "©Toshiba / HCL"
Custom	<input checked="" type="checkbox"/>	=
EMCS	4	= "4"
ETIM Article Class	EC001213	= "EC001213"
Family Version		=
GLN		=
GTIN		=
Internal Art. No.		=
MEPcontent Class	HEATPUMP	= "HEATPUMP"
Manufacturer Art. No.	MMD-UP0151BHP-E	=
Manufacturer URL	https://www.toshiba-carrier.co.jp/global/	=
Product Line	TCTC	= "TCTC"
Revit Version	2017	= "2017"
Stabu Code		=
Type Image		=
Keynote		=
Model	MMD-UP0151BHP-E	=
Manufacturer	Toshiba	= "Toshiba"
Type Comments		=
URL	https://www.toshiba-carrier.co.jp/global/	=
Description	Ducted standard	=
Assembly Code		=
Cost		=
Watermarked By		=
Wholesaler		=
Wholesaler Art. No.		=

MMD-UP0181BHP-E

Family Types

Type name: MMD-UP0181BHP-E

Search parameters

Parameter	Value	Formula
Materials and Finishes		
Red	Colour RGB-250 000 000	=
White	Colour RGB-255 255 255	=
Electrical		
MOCP (A)	15	=
MCA (A)	-	=
Running current-Cooling (A)	0.7	=
Power consumption-Cooling (Kw)	0.11	=
Running current-Heating	-	=
Power consumption-Heating	-	=
Frequency (Hz)	50Hz 220 - 240V	=
Voltage (V)	60Hz 220V	=
Starting current	1.24	=
Dimensions		
Height (mm)	275.0	=
Width (mm)	700.0	=
Depth (mm)	750.0	=
Piping diameter Gas (mm)	12.7	=
Piping diameter Liquid (mm)	6.4	=
Drain pipe(mm)	VP25(OD:32mm)	=
Duct diameters(mm)	-	=
Mechanical - Flow		
Static pressure Pa	30-40-50-65-80-100-120	=
Factory default	30	=
Sound pressure dB (A)- High	33	=
Sound pressure dB (A)- Mid	29	=
Sound pressure dB (A)- Low	25	=
Airflow m3/h- High	920	=
Airflow m3/h- Mid	660	=
Airflow m3/h-Low	540	=
Power Consumption W- High	110	=
Power Consumption W- Mid	-	=
Power Consumption W- Low	-	=
Mechanical - Loads		
Seasonal and Rated Efficiency	-	=
Part Load	-	=
Capacities KW - Cooling	5.6	=
Capacities KW - Heating	6.3	=
Energy Analysis		
Energy class	-	=
Capacity	-	=
Rated efficiency	-	=

Family Types

Type name: MMD-UP0181BHP-E

Search parameters

Parameter	Value	Formula
Visibility		
Service Area (default)	<input checked="" type="checkbox"/>	=
Top Clearance (default)	5.0	=
Right Side Clearance (default)	500.0	=
Left Side Clearance (default)	100.0	=
Rear side (Under air intake) (default)	50.0	=
Rear side (Back air intake) (default)	300.0	=
Other		
Sold separately parts-Spigot Shaped Flange	TCB-SF56C6BE	=
Refrigerant information	R410A	=
Weight (Kg)	23	=
Identity Data		
Article Description	Ducted standard	=
Article Type	MMD-UP0181BHP-E	=
Base Family Version		=
CB-NL Class		=
Content Supplier URL	www.hcltech.com	=
Copyright	©Toshiba / HCL	= "©Toshiba / HCL"
Custom	<input checked="" type="checkbox"/>	=
EMCS	4	= "4"
ETIM Article Class	EC001213	= "EC001213"
Family Version		=
GLN		=
GTIN		=
Internal Art. No.		=
MEPcontent Class	HEATPUMP	= "HEATPUMP"
Manufacturer Art. No.	MMD-UP0181BHP-E	=
Manufacturer URL	https://www.toshiba-carrier.co.jp/global/	=
Product Line	TCTC	= "TCTC"
Revit Version	2017	= "2017"
Stabu Code		=
Type Image		=
Keynote		=
Model	MMD-UP0181BHP-E	=
Manufacturer	Toshiba	= "Toshiba"
Type Comments		=
URL	https://www.toshiba-carrier.co.jp/global/	=
Description	Ducted standard	=
Assembly Code		=
Cost		=
Watermarked By		=
Wholesaler		=
Wholesaler Art. No.		=



Thank You