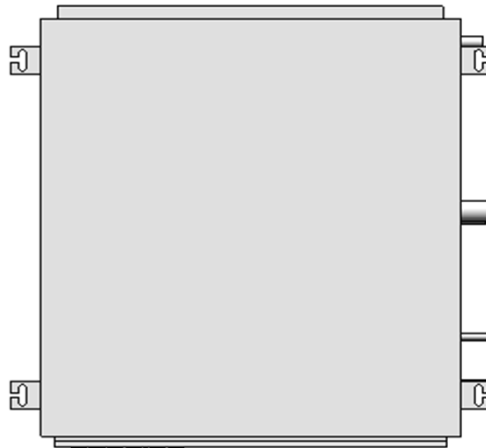
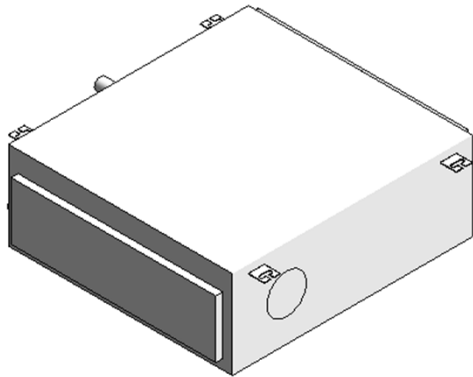
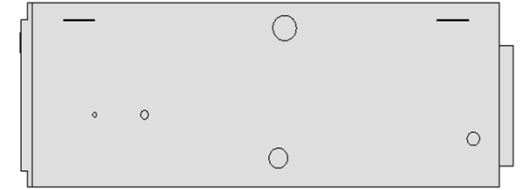
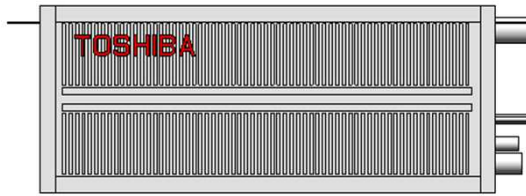
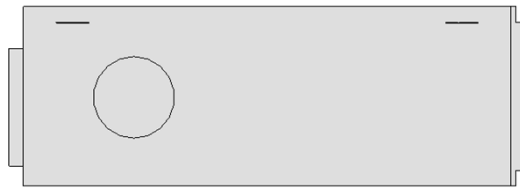


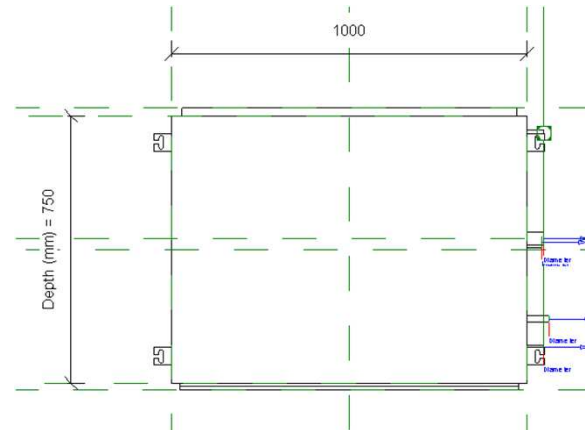
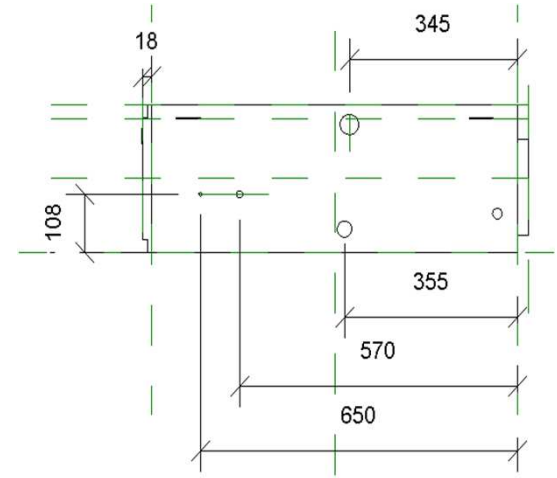
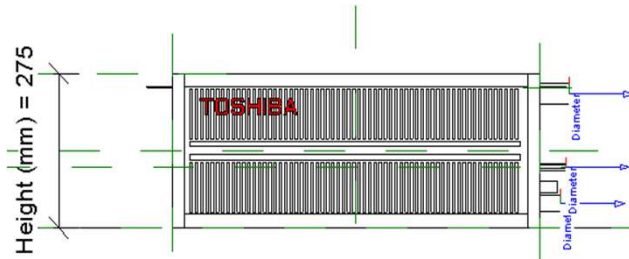
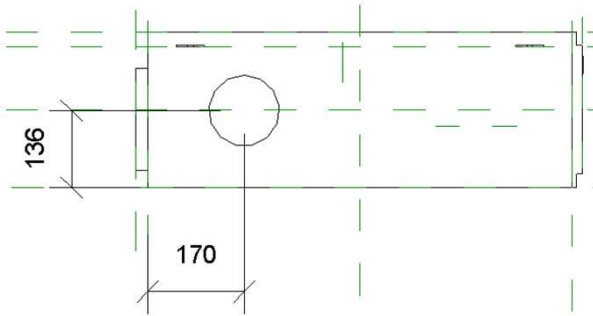
# VRF\_MMD1BHP\_24-30

14-01-2021

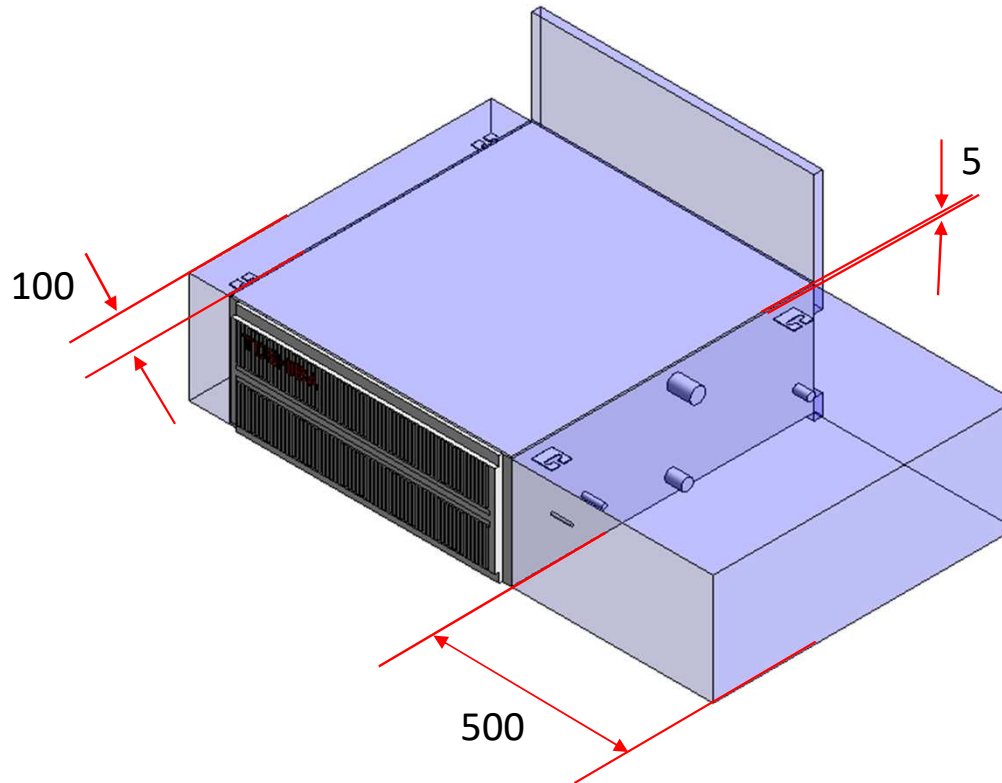
# VRF\_MMD1BHP\_24-30



# VRF\_MMD1BHP\_24-30

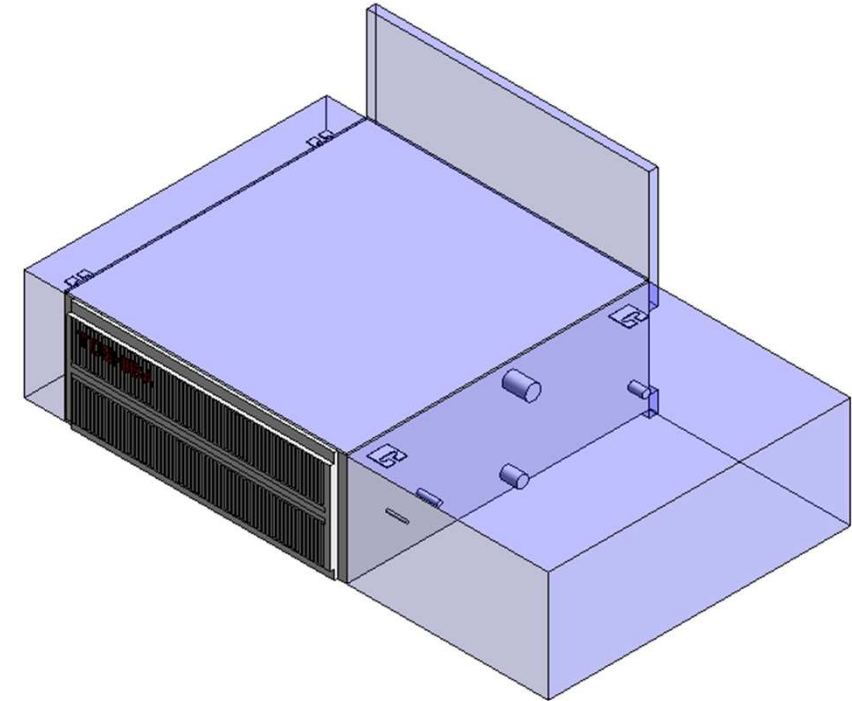


# VRF\_MMD1BHP\_24-30\_Service Area



# VRF\_MMD1BHP\_24-30

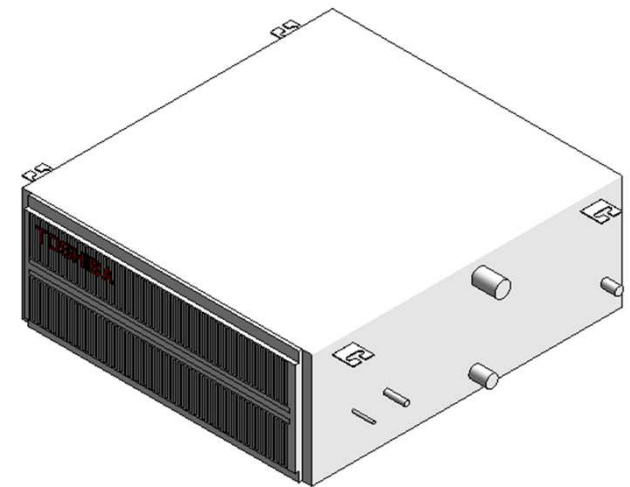
Visibility	
Service Area (default)	<input checked="" type="checkbox"/>
Top Clearance (default)	5.0
Right Side Clearance (default)	500.0
Left Side Clearance (default)	100.0
Rear side (Under air intake) (default)	50.0
Rear side (Back air intake) (default)	300.0



Service Clearance ON

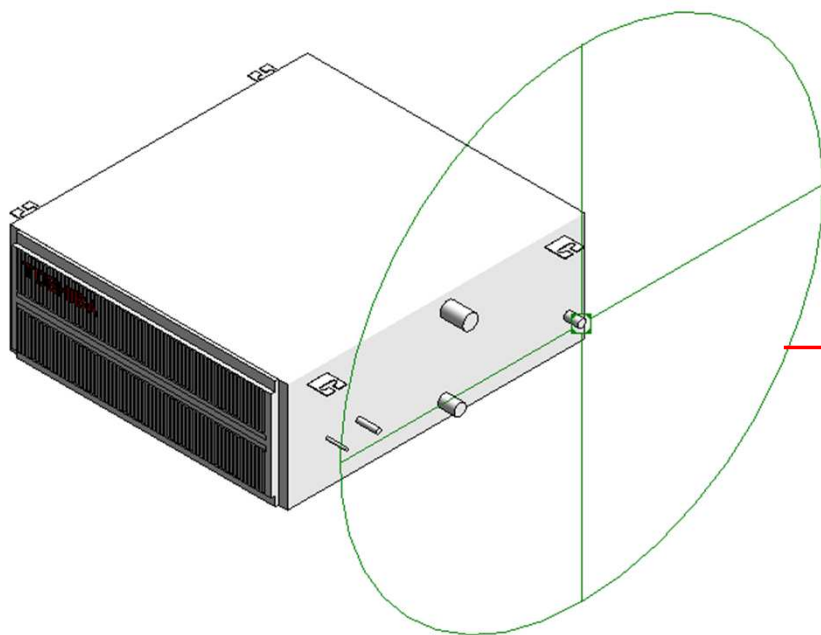
# VRF\_MMD1BHP\_24-30

Visibility	
Service Area (default)	<input type="checkbox"/>
Top Clearance (default)	5.0
Right Side Clearance (default)	500.0
Left Side Clearance (default)	100.0
Rear side (Under air intake) (default)	50.0
Rear side (Back air intake) (default)	300.0



Service Clearance OFF

# Electrical Connector



Properties

R

Connector Element (1) Edit Type

Electrical - Loads

System Type	Power - Unbalanced
Number of Poles	1
Power Factor State	Lagging
Load Classification	Other
Load Sub-Classification Motor	<input type="checkbox"/>
Voltage	0.00 V
Apparent Load Phase 1	0.00 VA
Apparent Load Phase 2	0.00 VA
Apparent Load Phase 3	0.00 VA
Power Factor	1.000000

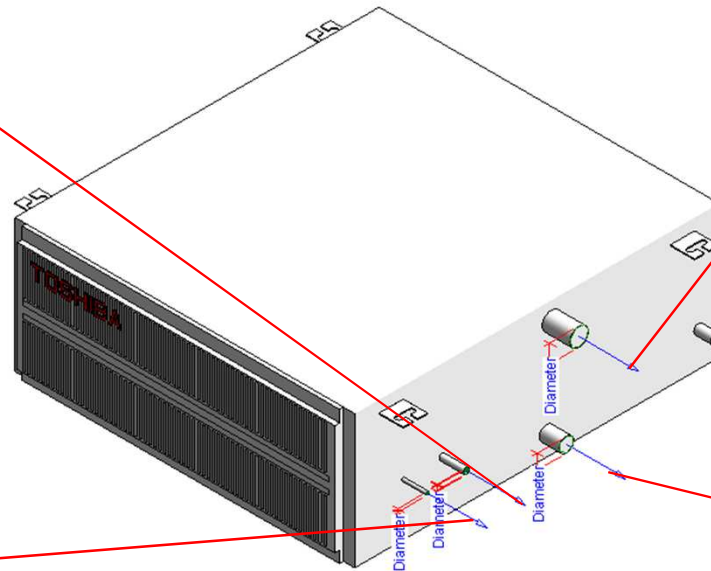
Identity Data

Utility	<input type="checkbox"/>
Connector Description	ELECTRICAL CONNECTOR

# Pipe Connectors

Properties	
<b>R</b>	
Connector Element (1) Edit	
Dimensions	
Diameter	15.9
Mechanical	
K Coefficient	0.000000
Flow Factor	0.000000
Flow Configuration	Calculated
Flow Direction	Out
Loss Method	Not Defined
Allow Slope Adjustments	<input type="checkbox"/>
System Classification	Hydronic Return
Mechanical - Flow	
Flow	0.00 L/s
Pressure Drop	0.00 Pa
Identity Data	
Utility	<input type="checkbox"/>
Connector Description	Refrigerant pipe connecting port - Gas side

Properties	
<b>R</b>	
Connector Element (1) Edit	
Dimensions	
Diameter	6.4
Mechanical	
K Coefficient	0.000000
Flow Factor	0.000000
Flow Configuration	Calculated
Flow Direction	In
Loss Method	Not Defined
Allow Slope Adjustments	<input type="checkbox"/>
System Classification	Hydronic Supply
Mechanical - Flow	
Flow	0.00 L/s
Pressure Drop	0.00 Pa
Identity Data	
Utility	<input type="checkbox"/>
Connector Description	Refrigerant pipe connecting port-Liquid side



Properties	
<b>R</b>	
Connector Element (1) Edit	
Dimensions	
Diameter	38.0
Mechanical	
K Coefficient	0.000000
Flow Factor	0.000000
Flow Configuration	Calculated
Flow Direction	Out
Loss Method	Not Defined
Allow Slope Adjustments	<input type="checkbox"/>
System Classification	Vent
Mechanical - Flow	
Flow	0.00 L/s
Pressure Drop	0.00 Pa
Identity Data	
Utility	<input type="checkbox"/>
Connector Description	Drain pipe connecting port

Properties	
<b>R</b>	
Connector Element (1) Edit	
Dimensions	
Diameter	30.0
Mechanical	
K Coefficient	0.000000
Flow Factor	0.000000
Flow Configuration	Calculated
Flow Direction	Out
Loss Method	Not Defined
Allow Slope Adjustments	<input type="checkbox"/>
System Classification	Vent
Mechanical - Flow	
Flow	0.00 L/s
Pressure Drop	0.00 Pa
Identity Data	
Utility	<input type="checkbox"/>
Connector Description	Drain pipe connecting port



# MMD-UP0241BHP-E

## Family Types

Type name: MMD-UP0241BHP-E

Search parameters

Parameter	Value	Formula
<b>Materials and Finishes</b>		
Red	Colour RGB-255 000 000	=
White	Colour RGB-255 255 255	=
<b>Electrical</b>		
MOCP (A)	15	=
MCA (A)	-	=
Running current-Cooling (A)	0.8	=
Power consumption-Cooling (Kw)	0.135	=
Running current-Heating	-	=
Power consumption-Heating	-	=
Frequency (Hz)	50Hz/ 220-240V	=
Voltage (V)	60Hz 220V	=
Starting current	0.9	=
<b>Dimensions</b>		
Height (mm)	275.0	=
Width (mm)	1000.0	=
Depth (mm)	750.0	=
Piping diameter Gas (mm)	15.9	=
Piping diameter Liquid (mm)	9.5	=
Drain pipe(mm)	VP25(OD:32mm)	=
Duct diameters(mm)	-	=
<b>Mechanical - Flow</b>		
Static pressure Pa	30-40-50-65-80-100-120	=
Factory default	40	=
Sound pressure dB (A)- High	33	=
Sound pressure dB (A)- Mid	30	=
Sound pressure dB (A)- Low	27	=
Airflow m3/h- High	1320	=
Airflow m3/h- Mid	1090	=
Airflow m3/h- Low	870	=
Power Consumption W- High	135	=
Power Consumption W- Mid	-	=
Power Consumption W- Low	-	=
<b>Mechanical - Loads</b>		
Seasonal and Rated Efficiency	-	=
Part Load	-	=
Capacities KW - Cooling	7.1	=
Capacities KW - Heating	8	=
<b>Energy Analysis</b>		
Energy class	-	=
Capacity	-	=
Rated efficiency	-	=

## Family Types

Type name: MMD-UP0241BHP-E

Search parameters

Parameter	Value	Formula
<b>Visibility</b>		
Service Area (default)	<input type="checkbox"/>	=
Top Clearance (default)	5.0	=
Right Side Clearance (default)	500.0	=
Left Side Clearance (default)	100.0	=
Rear side (Under air intake) (default)	50.0	=
Rear side (Back air intake) (default)	300.0	=
<b>Other</b>		
Sold separately parts-Spigot Shaped Flange	TCB-SF80C6BE	=
Refrigerant information	R410A	=
Weight (Kg)	30	=
<b>Identity Data</b>		
Article Description	Standard duct	=
Article Type	MMD-UP0241BHP-E	=
Base Family Version		=
CB-NL Class		=
Content Supplier URL	www.hcltech.com	=
Copyright	©Toshiba / HCL	= "©Toshiba / HCL"
Custom	<input checked="" type="checkbox"/>	=
EMCS	4	= "4"
ETIM Article Class	EC001213	= "EC001213"
Family Version		=
GLN		=
GTIN		=
Internal Art. No.		=
MEPcontent Class	HEATPUMP	= "HEATPUMP"
Manufacturer Art. No.	MMD-UP0241BHP-E	=
Manufacturer URL	https://www.toshiba-carrier.co.jp/global/	=
Product Line	TCTC	= "TCTC"
Revit Version	2017	= "2017"
Stabu Code		=
Type Image		=
Keynote		=
Model	MMD-UP0241BHP-E	=
Manufacturer	Toshiba	= "Toshiba"
Type Comments		=
URL	https://www.toshiba-carrier.co.jp/global/	=
Description	Standard duct	=
Assembly Code		=
Cost		=
Watermarked By		=
Wholesaler		=
Wholesaler Art. No.		=

# MMD-UP0271BHP-E

## Family Types

Type name: MMD-UP0271BHP-E

Search parameters

Parameter	Value	Formula
<b>Materials and Finishes</b>		
Red	Colour RGB-255 000 000	=
White	Colour RGB-255 255 255	=
<b>Electrical</b>		
MOCP (A)	15	=
MCA (A)	-	=
Running current-Cooling (A)	0.8	=
Power consumption-Cooling (Kw)	0.135	=
Running current-Heating	-	=
Power consumption-Heating	-	=
Frequency (Hz)	50Hz/ 220-240V	=
Voltage (V)	60Hz 220V	=
Starting current	1.58	=
<b>Dimensions</b>		
Height (mm)	275.0	=
Width (mm)	1000.0	=
Depth (mm)	750.0	=
Piping diameter Gas (mm)	15.9	=
Piping diameter Liquid (mm)	9.5	=
Drain pipe(mm)	VP25(OD:32mm)	=
Duct diameters(mm)	-	=
<b>Mechanical - Flow</b>		
Static pressure Pa	30-40-50-65-80-100-120	=
Factory default	40	=
Sound pressure dB (A)- High	36	=
Sound pressure dB (A)- Mid	31	=
Sound pressure dB (A)- Low	27	=
Airflow m3/h- High	1320	=
Airflow m3/h- Mid	1090	=
Airflow m3/h- Low	870	=
Power Consumption W- High	135	=
Power Consumption W- Mid	-	=
Power Consumption W- Low	-	=
<b>Mechanical - Loads</b>		
Seasonal and Rated Efficiency	-	=
Part Load	-	=
Capacities KW - Cooling	8	=
Capacities KW - Heating	9	=
<b>Energy Analysis</b>		
Energy class	-	=
Capacity	-	=
Rated efficiency	-	=

## Family Types

Type name: MMD-UP0271BHP-E

Search parameters

Parameter	Value	Formula
<b>Visibility</b>		
Service Area (default)	<input type="checkbox"/>	=
Top Clearance (default)	5.0	=
Right Side Clearance (default)	500.0	=
Left Side Clearance (default)	100.0	=
Rear side (Under air intake) (default)	50.0	=
Rear side (Back air intake) (default)	300.0	=
<b>Other</b>		
Sold separately parts-Spigot Shaped Flange	TCB-SF80C6BE	=
Refrigerant information	R410A	=
Weight (Kg)	30	=
<b>Identity Data</b>		
Article Description	Standard duct	=
Article Type	MMD-UP0271BHP-E	=
Base Family Version		=
CB-NL Class		=
Content Supplier URL	www.hcltech.com	=
Copyright	©Toshiba / HCL	= "©Toshiba / HCL"
Custom	<input checked="" type="checkbox"/>	=
EMCS	4	= "4"
ETIM Article Class	EC001213	= "EC001213"
Family Version		=
GLN		=
GTIN		=
Internal Art. No.		=
MEPcontent Class	HEATPUMP	= "HEATPUMP"
Manufacturer Art. No.	MMD-UP0271BHP-E	=
Manufacturer URL	https://www.toshiba-carrier.co.jp/global/	=
Product Line	TCTC	= "TCTC"
Revit Version	2017	= "2017"
Stabu Code		=
Type Image		=
Keynote		=
Model	MMD-UP0271BHP-E	=
Manufacturer	Toshiba	= "Toshiba"
Type Comments		=
URL	https://www.toshiba-carrier.co.jp/global/	=
Description	Standard duct	=
Assembly Code		=
Cost		=
Watermarked By		=
Wholesaler		=
Wholesaler Art. No.		=

# MMD-UP0301BHP-E

## Family Types

Type name: MMD-UP0301BHP-E

Search parameters

Parameter	Value	Formula
<b>Materials and Finishes</b>		
Red	Colour RGB-255 000 000	=
White	Colour RGB-255 255 255	=
<b>Electrical</b>		
MOCP (A)	15	=
MCA (A)	-	=
Running current-Cooling (A)	0.95	=
Power consumption-Cooling (Kw)	0.16	=
Running current-Heating	-	=
Power consumption-Heating	-	=
Frequency (Hz)	50Hz/ 220-240V	=
Voltage (V)	60Hz 220V	=
Starting current	1.78	=
<b>Dimensions</b>		
Height (mm)	275.0	=
Width (mm)	1000.0	=
Depth (mm)	750.0	=
Piping diameter Gas (mm)	15.9	=
Piping diameter Liquid (mm)	9.5	=
Drain pipe(mm)	VP25(OD:32mm)	=
Duct diameters(mm)	-	=
<b>Mechanical - Flow</b>		
Static pressure Pa	30-40-50-65-80-100-120	=
Factory default	40	=
Sound pressure dB (A)- High	36	=
Sound pressure dB (A)- Mid	31	=
Sound pressure dB (A)- Low	27	=
Airflow m3/h- High	1450	=
Airflow m3/h- Mid	1200	=
Airflow m3/h- Low	960	=
Power Consumption W- High	160	=
Power Consumption W- Mid	-	=
Power Consumption W- Low	-	=
<b>Mechanical - Loads</b>		
Seasonal and Rated Efficiency	-	=
Part Load	-	=
Capacities KW - Cooling	9	=
Capacities KW - Heating	10	=
<b>Energy Analysis</b>		
Energy class	-	=
Capacity	-	=
Rated efficiency	-	=

## Family Types

Type name: MMD-UP0301BHP-E

Search parameters

Parameter	Value	Formula
<b>Visibility</b>		
Service Area (default)	<input type="checkbox"/>	=
Top Clearance (default)	5.0	=
Right Side Clearance (default)	500.0	=
Left Side Clearance (default)	100.0	=
Rear side (Under air intake) (default)	50.0	=
Rear side (Back air intake) (default)	300.0	=
<b>Other</b>		
Sold separately parts-Spigot Shaped Flange	TCB-SF80C6BE	=
Refrigerant information	R410A	=
Weight (Kg)	30	=
<b>Identity Data</b>		
Article Description	Standard duct	=
Article Type	MMD-UP0301BHP-E	=
Base Family Version		=
CB-NL Class		=
Content Supplier URL	www.hcltech.com	=
Copyright	©Toshiba / HCL	= "©Toshiba / HCL"
Custom	<input checked="" type="checkbox"/>	=
EMCS	4	= "4"
ETIM Article Class	EC001213	= "EC001213"
Family Version		=
GLN		=
GTIN		=
Internal Art. No.		=
MEPcontent Class	HEATPUMP	= "HEATPUMP"
Manufacturer Art. No.	MMD-UP0301BHP-E	=
Manufacturer URL	https://www.toshiba-carrier.co.jp/global/	=
Product Line	TCTC	= "TCTC"
Revit Version	2017	= "2017"
Stabu Code		=
Type Image		=
Keynote		=
Model	MMD-UP0301BHP-E	=
Manufacturer	Toshiba	= "Toshiba"
Type Comments		=
URL	https://www.toshiba-carrier.co.jp/global/	=
Description	Standard duct	=
Assembly Code		=
Cost		=
Watermarked By		=
Wholesaler		=
Wholesaler Art. No.		=



**Thank You**