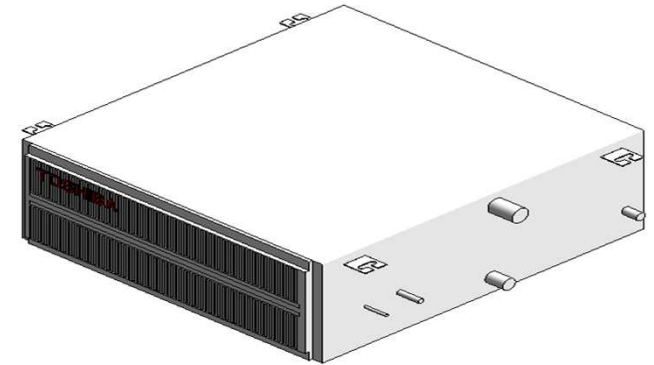
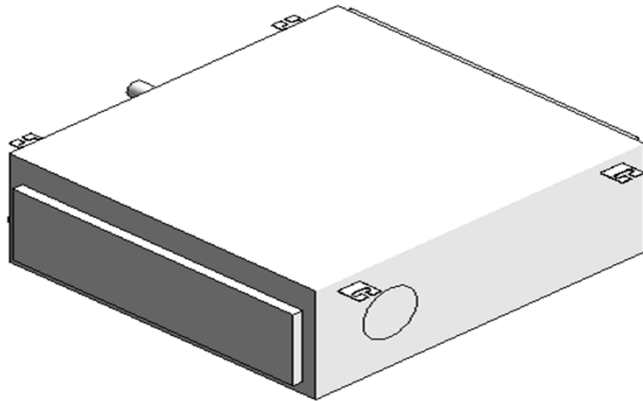
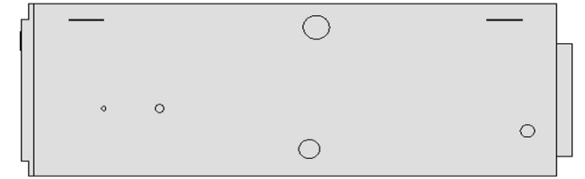
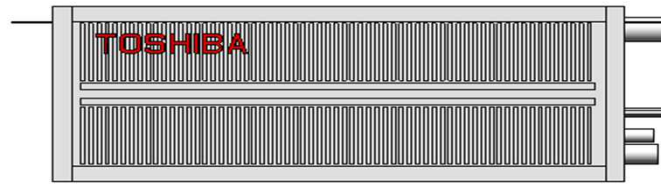


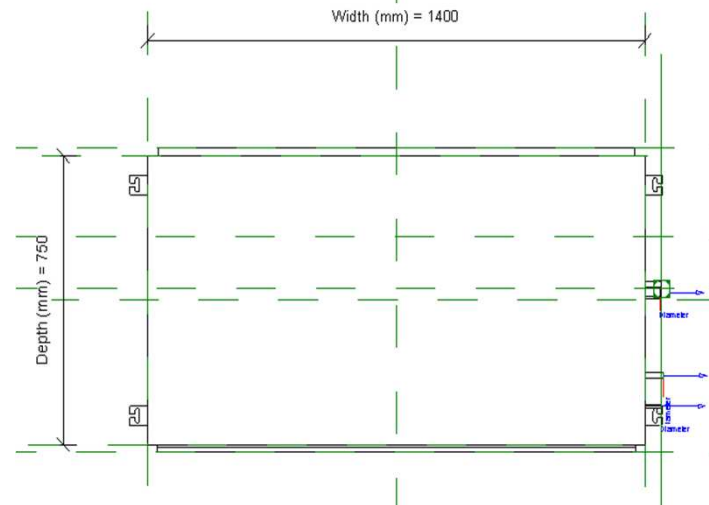
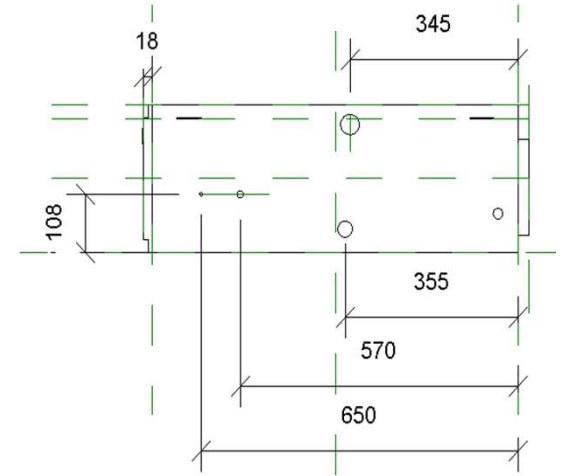
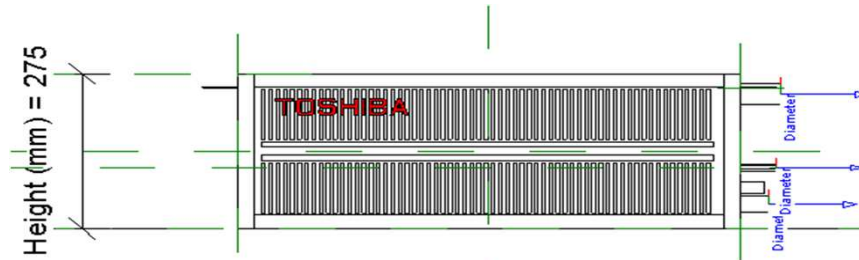
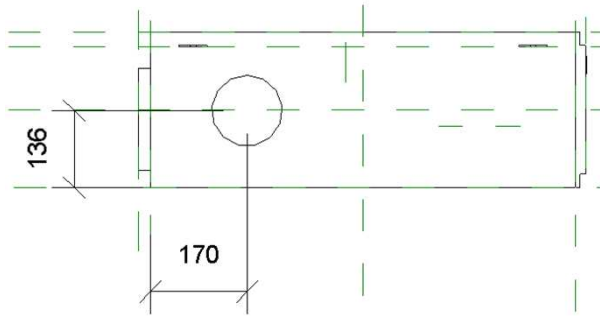
VRF_MMD1BHP_36-56

14-01-2021

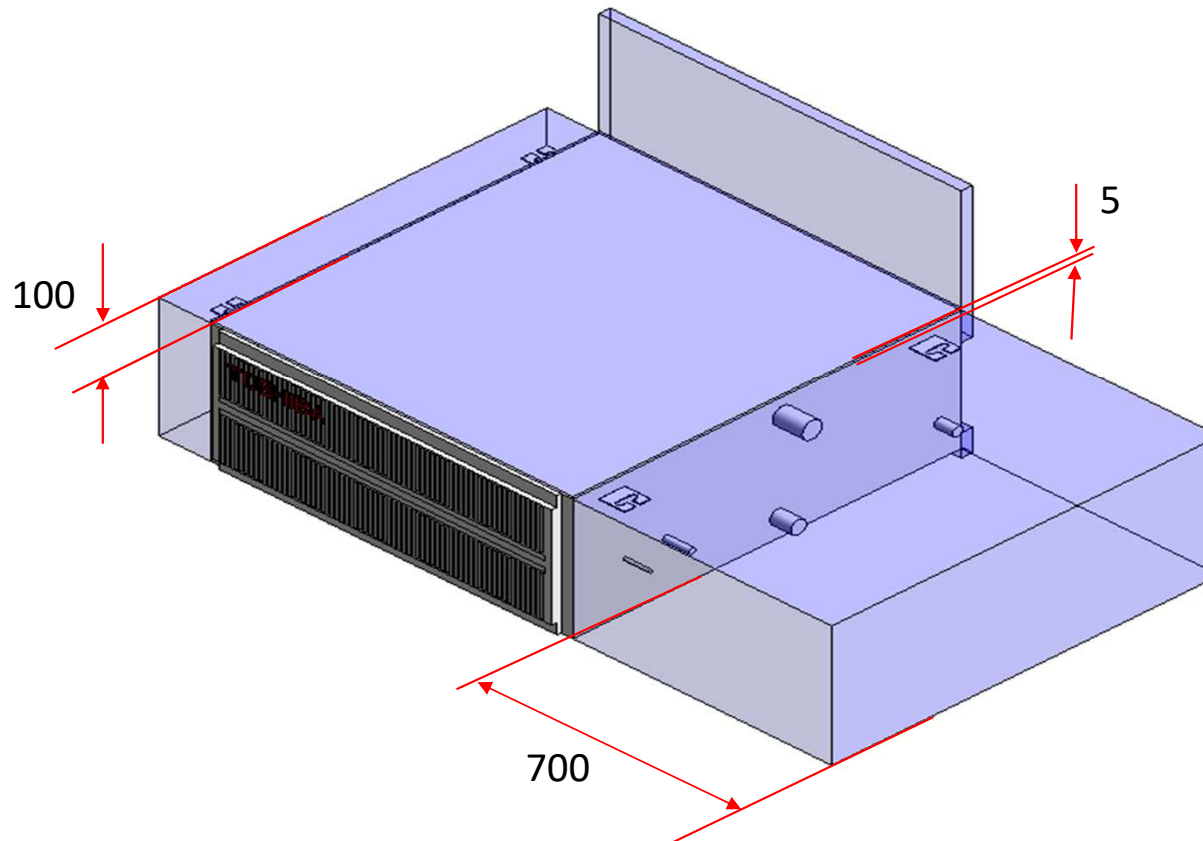
VRF_MMD1BHP_36-56



VRF_MMD1BHP_36-56

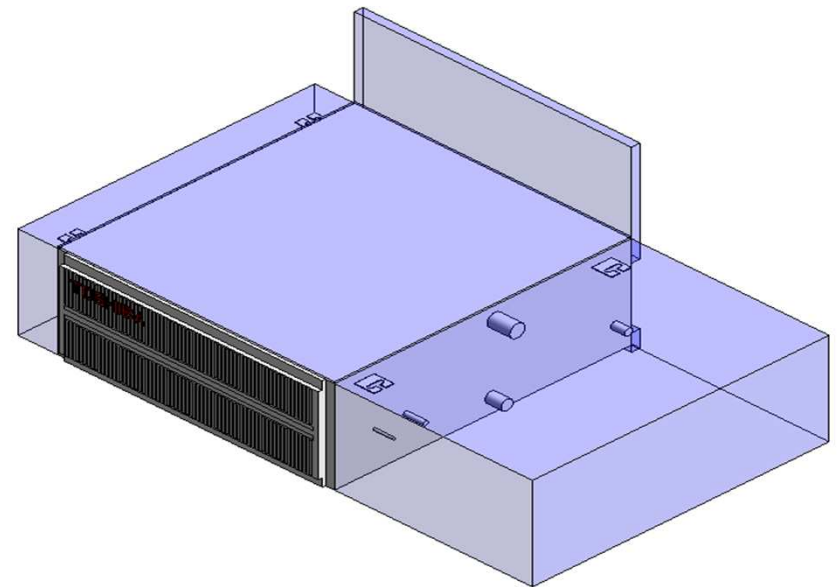


VRF_MMD1BHP_36-56_Service Area



VRF_MMD1BHP_36-56

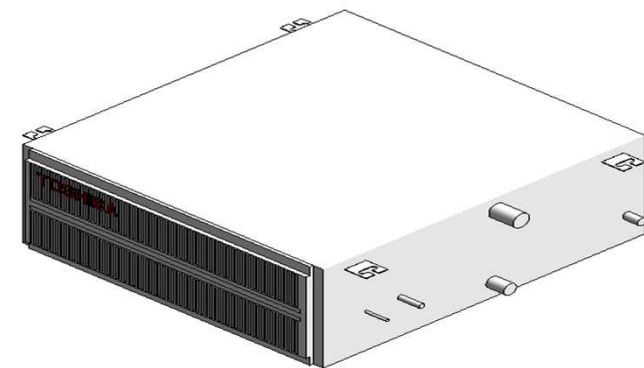
Visibility	
Service Area (default)	<input checked="" type="checkbox"/>
Top Clearance (default)	5.0
Right Side Clearance (default)	500.0
Left Side Clearance (default)	100.0
Rear side (Under air intake) (default)	50.0
Rear side (Back air intake) (default)	300.0



Service Clearance ON

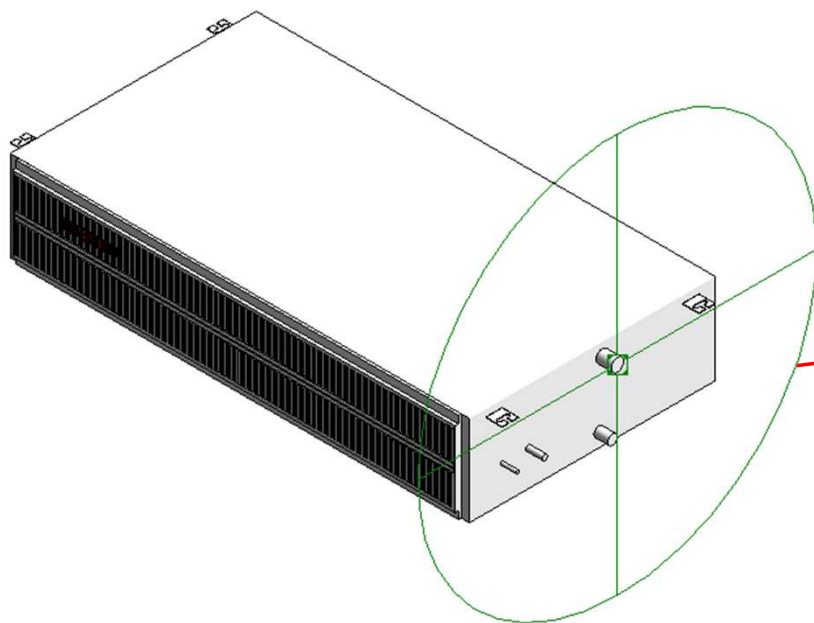
VRF_MMD1BHP_36-56

Visibility	
Service Area (default)	<input type="checkbox"/>
Top Clearance (default)	5.0
Right Side Clearance (default)	500.0
Left Side Clearance (default)	100.0
Rear side (Under air intake) (default)	50.0
Rear side (Back air intake) (default)	300.0



Service Clearance OFF

Electrical Connector



Properties

R

Connector Element (1) Edit Type

Electrical - Loads

System Type	Power - Unbalanced
Number of Poles	1
Power Factor State	Lagging
Load Classification	Other
Load Sub-Classification Motor	<input type="checkbox"/>
Voltage	0.00 V
Apparent Load Phase 1	0.00 VA
Apparent Load Phase 2	0.00 VA
Apparent Load Phase 3	0.00 VA
Power Factor	1.000000

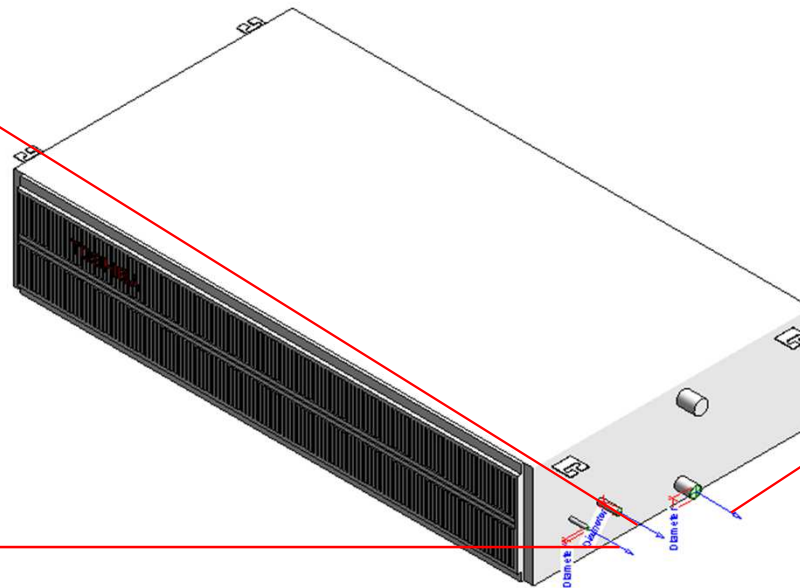
Identity Data

Utility	<input type="checkbox"/>
Connector Description	ELECTRICAL CONNECTOR

Pipe Connectors

Properties	
R	
Connector Element (1) Edit	
Dimensions	
Diameter	15.9
Mechanical	
K Coefficient	0.000000
Flow Factor	0.000000
Flow Configuration	Calculated
Flow Direction	Out
Loss Method	Not Defined
Allow Slope Adjustments	<input type="checkbox"/>
System Classification	Hydronic Return
Mechanical - Flow	
Flow	0.00 L/s
Pressure Drop	0.00 Pa
Identity Data	
Utility	<input type="checkbox"/>
Connector Description	Refrigerant pipe connecting port - Gas side

Properties	
R	
Connector Element (1) Edit	
Dimensions	
Diameter	9.5
Mechanical	
K Coefficient	0.000000
Flow Factor	0.000000
Flow Configuration	Calculated
Flow Direction	In
Loss Method	Not Defined
Allow Slope Adjustments	<input type="checkbox"/>
System Classification	Hydronic Supply
Mechanical - Flow	
Flow	0.00 L/s
Pressure Drop	0.00 Pa
Identity Data	
Utility	<input type="checkbox"/>
Connector Description	HYDRONIC SUPPLY (LIQUID) PORT @ 9.5mm



Properties	
R	
Connector Element (1) Edit	
Dimensions	
Diameter	30.0
Mechanical	
K Coefficient	0.000000
Flow Factor	0.000000
Flow Configuration	Calculated
Flow Direction	Out
Loss Method	Not Defined
Allow Slope Adjustments	<input type="checkbox"/>
System Classification	Vent
Mechanical - Flow	
Flow	0.00 L/s
Pressure Drop	0.00 Pa
Identity Data	
Utility	<input type="checkbox"/>
Connector Description	Drain pipe connecting port

MMD-UP0361BHP-E

Family Types

Type name: MMD-UP0361BHP-E

Search parameters

Parameter	Value	Formula
Materials and Finishes		
Red	Colour RGB-255 000 000	=
White	Colour RGB-255 255 255	=
Electrical		
MOCP (A)	15	=
MCA (A)	-	=
Running current-Cooling (A)	1.29	=
Power consumption-Cooling (Kw)	0.22	=
Running current-Heating	-	=
Power consumption-Heating	-	=
Frequency (Hz)	50Hz/ 220-240V	=
Voltage (V)	60Hz 220V	=
Starting current	2.19	=
Dimensions		
Height (mm)	275.0	=
Width (mm)	1400.0	=
Depth (mm)	750.0	=
Piping diameter- Gas (mm)	15.9	=
Piping diameter- Liquid (mm)	9.5	=
Drain pipe(mm)	VP25(OD:32mm)	=
Duct diameters	-	=
Mechanical - Flow		
Static pressure Pa	30-40-50-65-80-100-120	=
Factory default	50	=
Sound pressure dB(A)- High	36	=
Sound pressure dB(A)- Mid	34	=
Sound pressure dB(A)- Low	31	=
Airflow m3/h- High	1920	=
Airflow m3/h- Mid	1620	=
Airflow m3/h- Low	1380	=
Power Consumption W- High	220	=
Power Consumption W- Mid	-	=
Power Consumption W- Low	-	=
Mechanical - Loads		
Seasonal and Rated Efficiency	-	=
Part Load	-	=
Capacities KW - Cooling	11.2	=
Capacities KW - Heating	12.5	=
Energy Analysis		
Energy class	-	=
Capacity	-	=
Rated efficiency	-	=

Family Types

Type name: MMD-UP0361BHP-E

Search parameters

Parameter	Value	Formula
Visibility		
Service Area (default)	<input type="checkbox"/>	=
Top Clearance (default)	5.0	=
Right Side Clearance (default)	700.0	=
Left Side Clearance (default)	100.0	=
Rear side (Under air intake) (default)	50.0	=
Rear side (Back air intake) (default)	300.0	=
Other		
Refrigerant information	R410A	=
Sold separately parts-Spigot Shaped Flange	TCB-SF160C6BE	=
Weight (Kg)	40	=
Identity Data		
Article Description	Ducted standard	=
Article Type	MMD-UP0361BHP-E	=
Base Family Version		=
CB-NL Class		=
Content Supplier URL	www.hcltech.com	=
Copyright	©Toshiba / HCL	= "©Toshiba / HCL"
Custom	<input checked="" type="checkbox"/>	=
EMCS	4	= "4"
ETIM Article Class	EC001213	= "EC001213"
Family Version		=
GLN		=
GTIN		=
Internal Art. No.		=
MEPcontent Class	HEATPUMP	= "HEATPUMP"
Manufacturer Art. No.	MMD-UP0361BHP-E	=
Manufacturer URL	https://www.toshiba-carrier.co.jp/global/	=
Product Line	TCTC	= "TCTC"
Revit Version	2017	= "2017"
Stabu Code		=
Type Image		=
Keynote		=
Model	MMD-UP0361BHP-E	=
Manufacturer	Toshiba	= "Toshiba"
Type Comments		=
URL	https://www.toshiba-carrier.co.jp/global/	=
Description	Ducted standard	=
Assembly Code		=
Cost		=
Watermarked By		=
Wholesaler		=
Wholesaler Art. No.		=

MMD-UP0481BHP-E

Family Types

Type name:

Search parameters

Parameter	Value	Formula
Materials and Finishes		
Red	Colour RGB-255 000 000	=
White	Colour RGB-255 255 255	=
Electrical		
MOCP (A)	15	=
MCA (A)	-	=
Running current-Cooling (A)	1.7	=
Power consumption-Cooling (Kw)	0.29	=
Running current-Heating	-	=
Power consumption-Heating	-	=
Frequency (Hz)	50Hz/ 220-240V	=
Voltage (V)	60Hz 220V	=
Starting current	2.66	=
Dimensions		
Height (mm)	275.0	=
Width (mm)	1400.0	=
Depth (mm)	750.0	=
Piping diameter- Gas (mm)	15.9	=
Piping diameter- Liquid (mm)	9.5	=
Drain pipe(mm)	VP25(OD:32mm)	=
Duct diameters	-	=
Mechanical - Flow		
Static pressure Pa	30-40-50-65-80-100-120	=
Factory default	50	=
Sound pressure dB(A)- High	40	=
Sound pressure dB(A)- Mid	36	=
Sound pressure dB(A)- Low	33	=
Airflow m3/h- High	2350	=
Airflow m3/h- Mid	1920	=
Airflow m3/h- Low	1500	=
Power Consumption W- High	290	=
Power Consumption W- Mid	-	=
Power Consumption W- Low	-	=
Mechanical - Loads		
Seasonal and Rated Efficiency	-	=
Part Load	-	=
Capacities KW - Cooling	14	=
Capacities KW - Heating	16	=
Energy Analysis		
Energy class	-	=
Capacity	-	=
Rated efficiency	-	=

Family Types

Type name:

Search parameters

Parameter	Value	Formula
Visibility		
Service Area (default)	<input type="checkbox"/>	=
Top Clearance (default)	5.0	=
Right Side Clearance (default)	700.0	=
Left Side Clearance (default)	100.0	=
Rear side (Under air intake) (default)	50.0	=
Rear side (Back air intake) (default)	300.0	=
Other		
Refrigerant information	R410A	=
Sold separately parts-Spigot Shaped Flange	TCB-SF160C6BE	=
Weight (Kg)	40	=
Identity Data		
Article Description	Ducted standard	=
Article Type	MMD-UP0481BHP-E	=
Base Family Version		=
CB-NL Class		=
Content Supplier URL	www.hcltech.com	=
Copyright	©Toshiba / HCL	= "©Toshiba / HCL"
Custom	<input checked="" type="checkbox"/>	= "4"
EMCS	4	= "4"
ETIM Article Class	EC001213	= "EC001213"
Family Version		=
GLN		=
GTIN		=
Internal Art. No.		=
MEPcontent Class	HEATPUMP	= "HEATPUMP"
Manufacturer Art. No.	MMD-UP0481BHP-E	=
Manufacturer URL	https://www.toshiba-carrier.co.jp/global/	=
Product Line	TCTC	= "TCTC"
Revit Version	2017	= "2017"
Stabu Code		=
Type Image		=
Keynote		=
Model	MMD-UP0481BHP-E	=
Manufacturer	Toshiba	= "Toshiba"
Type Comments		=
URL	https://www.toshiba-carrier.co.jp/global/	=
Description	Ducted standard	=
Assembly Code		=
Cost		=
Watermarked By		=
Wholesaler		=
Wholesaler Art. No.		=

MMD-UP0561BHP-E

Family Types

Type name: MMD-UP0561BHP-E

Search parameters

Parameter	Value	Formula
Materials and Finishes		
Red	Colour RGB-255 000 000	=
White	Colour RGB-255 255 255	=
Electrical		
MOCP (A)	15	=
MCA (A)	-	=
Running current-Cooling (A)	1.7	=
Power consumption-Cooling (Kw)	0.29	=
Running current-Heating	-	=
Power consumption-Heating	-	=
Frequency (Hz)	50Hz/ 220-240V	=
Voltage (V)	60Hz 220V	=
Starting current	2.66	=
Dimensions		
Height (mm)	275.0	=
Width (mm)	1400.0	=
Depth (mm)	750.0	=
Piping diameter- Gas (mm)	15.9	=
Piping diameter- Liquid (mm)	9.5	=
Drain pipe(mm)	VP25(OD:32mm)	=
Duct diameters	-	=
Mechanical - Flow		
Static pressure Pa	30-40-50-65-80-100-120	=
Factory default	50	=
Sound pressure dB(A)- High	40	=
Sound pressure dB(A)- Mid	36	=
Sound pressure dB(A)- Low	33	=
Airflow m3/h- High	2350	=
Airflow m3/h- Mid	1920	=
Airflow m3/h- Low	1500	=
Power Consumption W- High	290	=
Power Consumption W- Mid	-	=
Power Consumption W- Low	-	=
Mechanical - Loads		
Seasonal and Rated Efficiency	-	=
Part Load	-	=
Capacities KW - Cooling	16	=
Capacities KW - Heating	18	=
Energy Analysis		
Energy class	-	=
Capacity	-	=
Rated efficiency	-	=

Family Types

Type name: MMD-UP0561BHP-E

Search parameters

Parameter	Value	Formula
Visibility		
Service Area (default)	<input checked="" type="checkbox"/>	=
Top Clearance (default)	5.0	=
Right Side Clearance (default)	700.0	=
Left Side Clearance (default)	100.0	=
Rear side (Under air intake) (default)	50.0	=
Rear side (Back air intake) (default)	300.0	=
Other		
Refrigerant information	R410A	=
Sold separately parts-Spigot Shaped Flange	TCB-SF160C6BE	=
Weight (Kg)	40	=
Identity Data		
Article Description	Ducted standard	=
Article Type	MMD-UP0561BHP-E	=
Base Family Version		=
CB-NL Class		=
Content Supplier URL	www.hcltech.com	=
Copyright	©Toshiba / HCL	= "©Toshiba / HCL"
Custom	<input checked="" type="checkbox"/>	=
EMCS	4	= "4"
ETIM Article Class	EC001213	= "EC001213"
Family Version		=
GLN		=
GTIN		=
Internal Art. No.		=
MEPcontent Class	HEATPUMP	= "HEATPUMP"
Manufacturer Art. No.	MMD-UP0561BHP-E	=
Manufacturer URL	https://www.toshiba-carrier.co.jp/global/	=
Product Line	TCTC	= "TCTC"
Revit Version	2017	= "2017"
Stabu Code		=
Type Image		=
Keynote		=
Model	MMD-UP0561BHP-E	=
Manufacturer	Toshiba	= "Toshiba"
Type Comments		=
URL	https://www.toshiba-carrier.co.jp/global/	=
Description	Ducted standard	=
Assembly Code		=
Cost		=
Watermarked By		=
Wholesaler		=
Wholesaler Art. No.		=



Thank You