

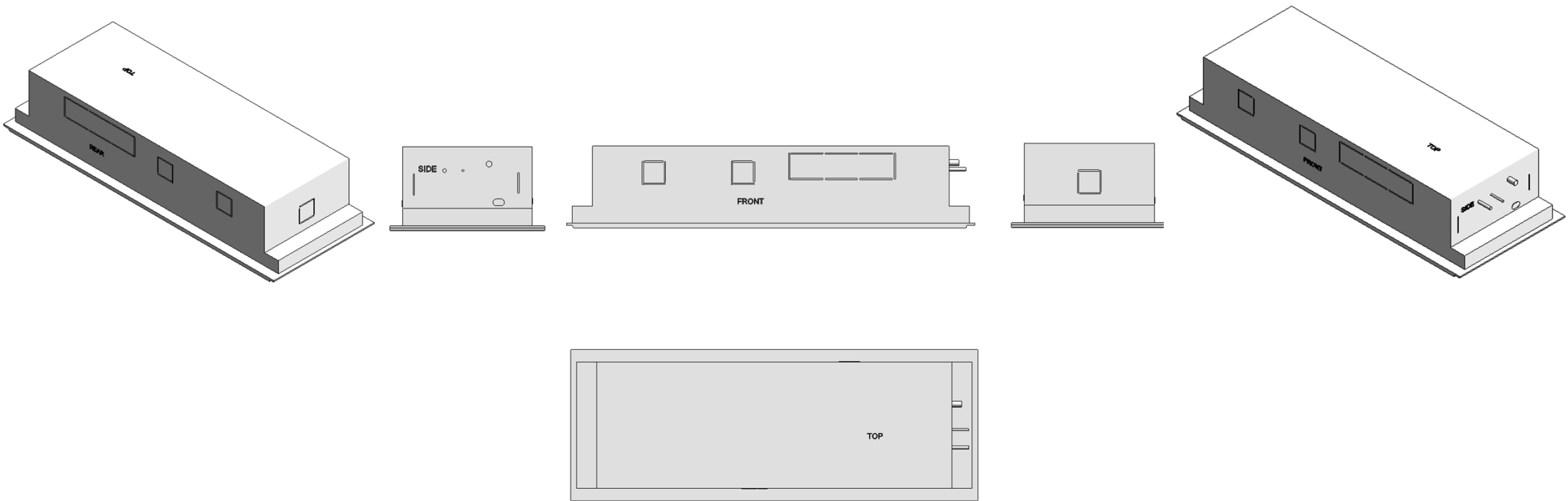


**HCL**

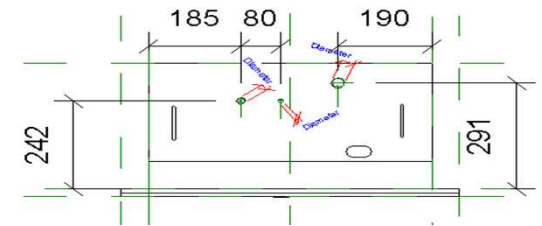
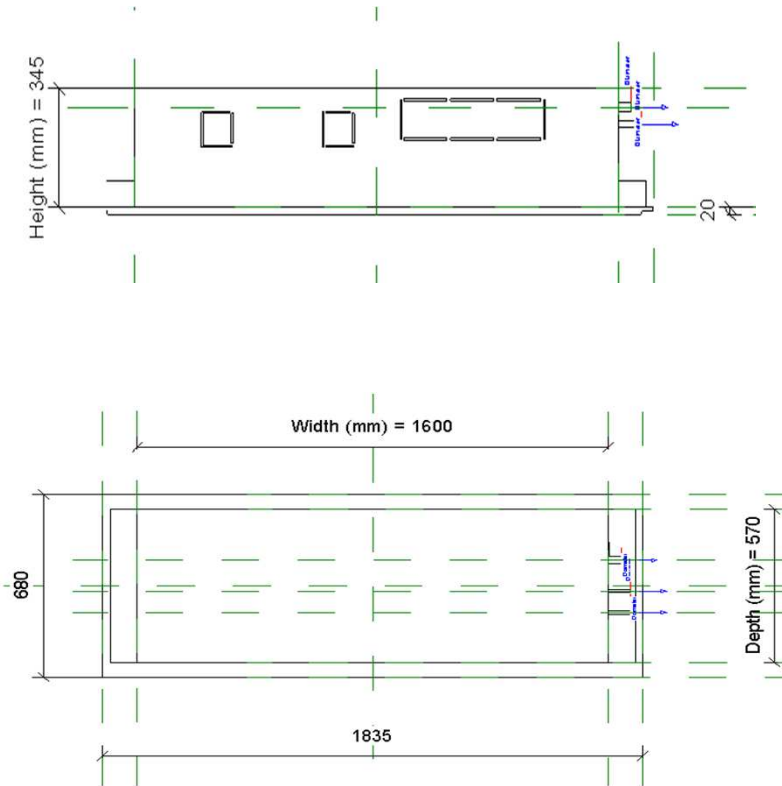
VRF\_MMU1WH\_36-56

28-01-2021

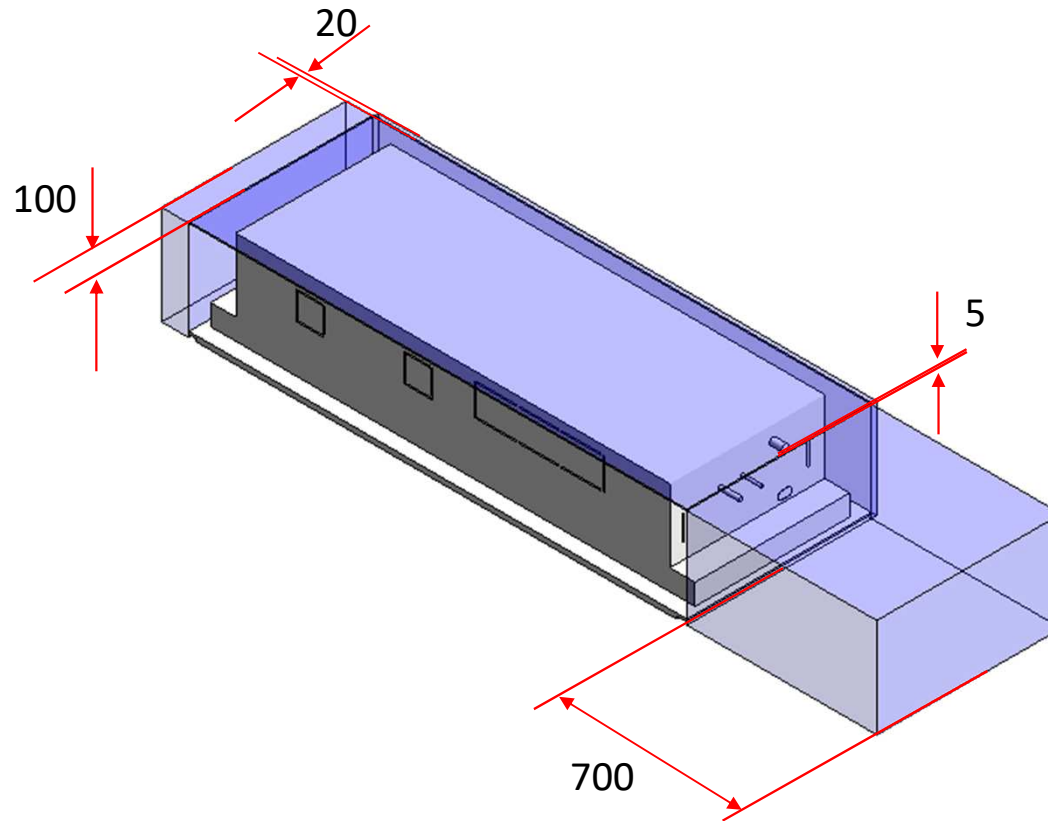
# VRF\_MMU1WH\_36-56



# VRF\_MMU1WH\_36-56



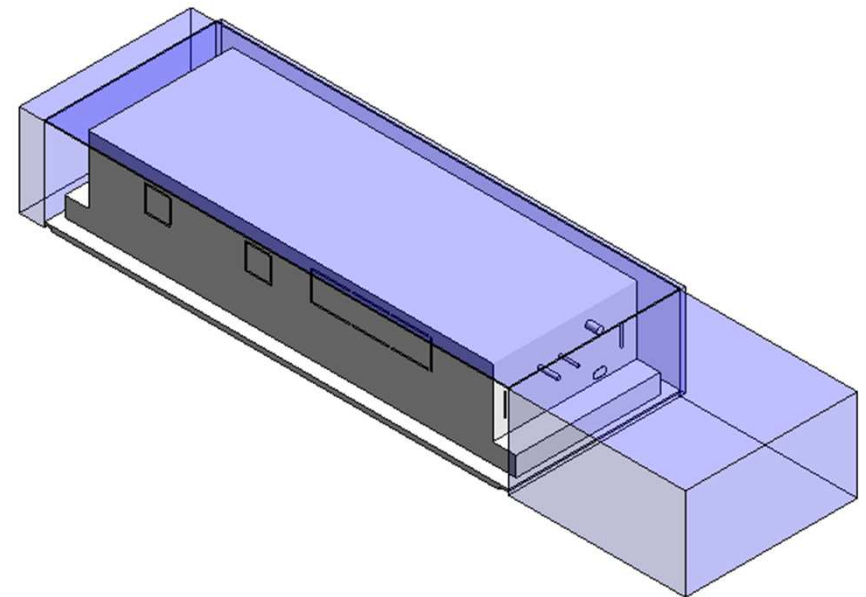
# VRF\_MMU1WH\_36-56\_Service Area



# VRF\_MMU1WH\_36-56

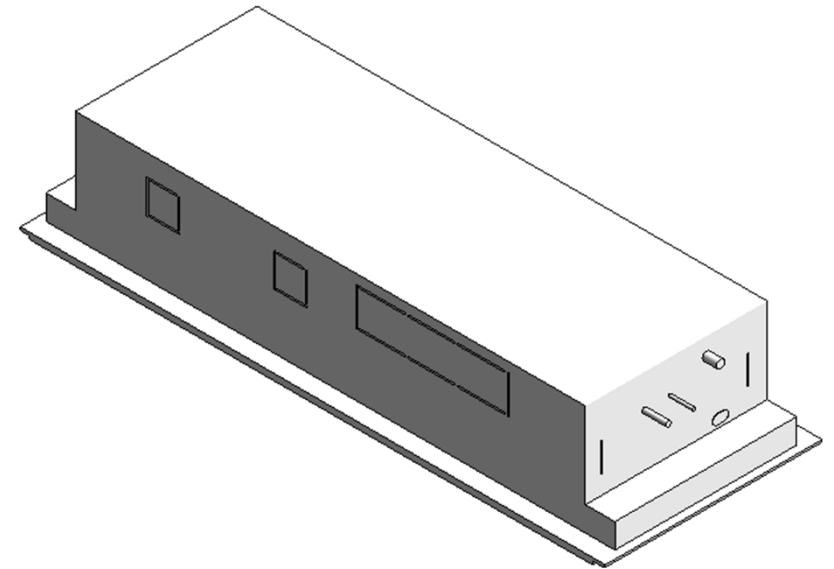
Visibility	
Service Area (default)	<input checked="" type="checkbox"/>
Top Clearance (default)	5.0
Right Side Clearance (default)	700.0
Left Side Clearance	100.0
Back Clearance (default)	20.0

Service Clearance ON



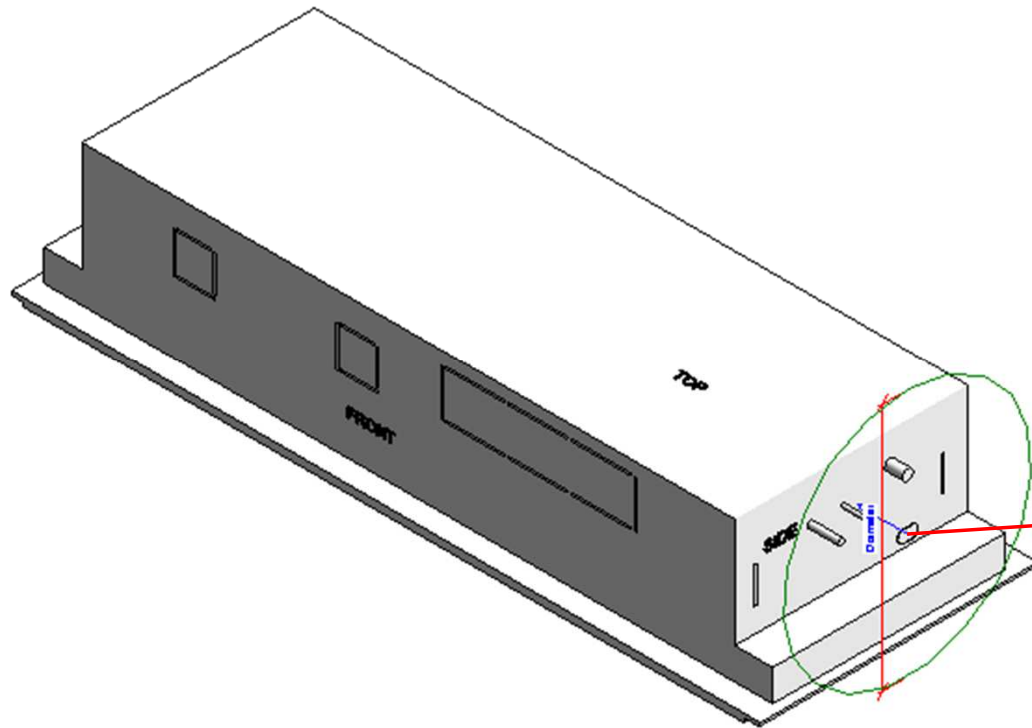
# VRF\_MMU1WH\_36-56


Visibility	
Service Area (default)	<input type="checkbox"/>
Top Clearance (default)	5.0
Right Side Clearance (default)	700.0
Left Side Clearance	100.0
Back Clearance (default)	20.0



Service Clearance OFF

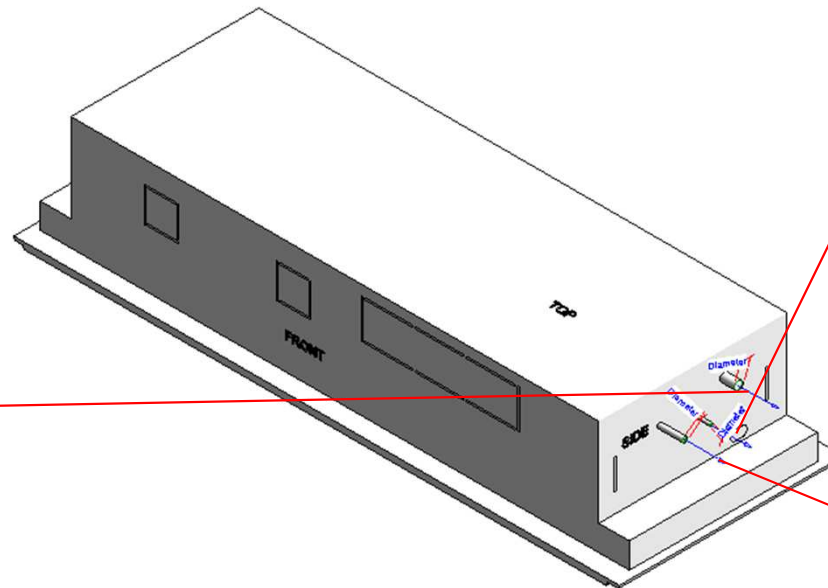
# Electrical Connector



Properties	
	
Connector Element (1) <span>▼</span> <span>Edit T</span>	
Electrical - Loads	
System Type	Power - Unbalanced
Number of Poles	1
Power Factor State	Lagging
Load Classification	Other
Load Sub-Classification Motor	<input type="checkbox"/>
Voltage	0.00 V
Apparent Load Phase 1	0.00 VA
Apparent Load Phase 2	0.00 VA
Apparent Load Phase 3	0.00 VA
Power Factor	1.000000
Identity Data	
Utility	<input type="checkbox"/>
Connector Description	ELECTRIC CONNECTOR

# Pipe Connectors

Properties	
<b>R</b>	
Connector Element (1)	
Dimensions	
Diameter	26.0
Mechanical	
K Coefficient	0.000000
Flow Factor	0.000000
Flow Configuration	Calculated
Flow Direction	Out
Loss Method	Not Defined
Allow Slope Adjustments	<input type="checkbox"/>
System Classification	Vent
Mechanical - Flow	
Flow	0.00 L/s
Pressure Drop	0.00 Pa
Identity Data	
Utility	<input type="checkbox"/>
Connector Description	Drain port



Properties	
<b>R</b>	
Connector Element (1)	
Dimensions	
Diameter	9.5
Mechanical	
K Coefficient	0.000000
Flow Factor	0.000000
Flow Configuration	Calculated
Flow Direction	In
Loss Method	Not Defined
Allow Slope Adjustments	<input type="checkbox"/>
System Classification	Hydronic Supply
Mechanical - Flow	
Flow	0.00 L/s
Pressure Drop	0.00 Pa
Identity Data	
Utility	<input type="checkbox"/>
Connector Description	Refrigerant Pipe connecting Port-Liquid side

Properties	
<b>R</b>	
Connector Element (1)	
Dimensions	
Diameter	15.9
Mechanical	
K Coefficient	0.000000
Flow Factor	0.000000
Flow Configuration	Calculated
Flow Direction	Out
Loss Method	Not Defined
Allow Slope Adjustments	<input type="checkbox"/>
System Classification	Hydronic Return
Mechanical - Flow	
Flow	0.00 L/s
Pressure Drop	0.00 Pa
Identity Data	
Utility	<input type="checkbox"/>
Connector Description	Refrigerant Pipe connecting Port-Gas side



# MMU-UP0361WH-E

## Family Types

Type name: MMU-UP0361WH-E

Search parameters

Parameter	Value	Formula
<b>Materials and Finishes</b>		
Red	Colour RGB-255 000 000	=
White	Colour RGB-255 255 255	=
<b>Electrical</b>		
MOCP (A)	15	=
MCA (A)	1.09	=
Running current-Cooling (A)	0.48	=
Power consumption-Cooling (Kw)	0.073	=
Running current-Heating	-	=
Power consumption-Heating	-	=
Frequency (Hz)	50Hz/ 220-240V	=
Voltage (V)	60Hz 208-230V	=
Starting current	0.72	=
<b>Dimensions</b>		
Height (mm)	345.0	=
Width (mm)	1600.0	=
Depth (mm)	570.0	=
Piping diameter Gas (mm)	15.9	=
Piping diameter Liquid (mm)	9.5	=
Drain pipe	VP25(OD:32mm)	=
Duct diameters	-	=
<b>Mechanical - Flow</b>		
Static pressure	-	=
Sound pressure - Cooling (dB)- High	42	=
Sound pressure - Heating (dB)- Mid	39	=
Sound pressure (dB)- Low	36	=
Airflow m3/h- High	1740	=
Airflow m3/h- Mid	1434	=
Airflow m3/h- Low	1182	=
Power Consumption W- High	73	=
Power Consumption W- Mid	67	=
Power Consumption W- Low	50	=
<b>Mechanical - Loads</b>		
Seasonal and Rated Efficiency	-	=
Part Load	-	=
Capacities KW - Cooling	11.2	=
Capacities KW - Heating	12.5	=
<b>Energy Analysis</b>		
Energy class	-	=
Capacity	-	=
Rated efficiency	-	=

## Family Types

Type name: MMU-UP0361WH-E

Search parameters

Parameter	Value	Formula
<b>Visibility</b>		
Service Area (default)	<input type="checkbox"/>	=
Top Clearance (default)	5.0	=
Right Side Clearance (default)	700.0	=
Left Side Clearance	100.0	=
Back Clearance (default)	20.0	=
<b>Other</b>		
Refrigerant information	R410A	=
Model Name	RBC-UW1403PG(W)-E	=
Dimension-Height (mm)	20.0	=
Dimension-Width (mm)	1835.0	=
Dimension-Depth (mm)	680.0	=
Weight (Kg)	36	=
<b>Identity Data</b>		
Article Description	Cassette 2-way	=
Article Type	MMU-UP0361WH-E	=
Base Family Version		=
CB-NL Class		=
Content Supplier URL	www.hcltech.com	=
Copyright	©Toshiba / HCL	= "©Toshiba / HCL"
Custom	<input checked="" type="checkbox"/>	=
EMCS	4	= "4"
ETIM Article Class	EC001213	= "EC001213"
Family Version		=
GLN		=
GTIN		=
Internal Art. No.		=
MEPcontent Class	HEATPUMP	= "HEATPUMP"
Manufacturer Art. No.	MMU-UP0361WH-E	=
Manufacturer URL	https://www.toshiba-carrier.co.jp/global/	=
Product Line	TCC	= "TCC"
Revit Version		=
Stabu Code		=
Type Image		=
Keynote		=
Model	MMU-UP0361WH-E	=
Manufacturer	Toshiba	= "Toshiba"
Type Comments		=
URL	https://www.toshiba-carrier.co.jp/global/	=
Description	Cassette 2-way	=
Assembly Code		=
Cost		=
Watermarked By		=

# MMU-UP0481WH-E

## Family Types

Type name: MMU-UP0481WH-E

Search parameters

Parameter	Value	Formula
<b>Materials and Finishes</b>		
Red	Colour RGB-255 000 000	=
White	Colour RGB-255 255 255	=
<b>Electrical</b>		
MOCP (A)	15	=
MCA (A)	1.09	=
Running current-Cooling (A)	0.57	=
Power consumption-Cooling (Kw)	0.088	=
Running current-Heating	-	=
Power consumption-Heating	-	=
Frequency (Hz)	50Hz/ 220-240V	=
Voltage (V)	60Hz 208-230V	=
Starting current	0.86	=
<b>Dimensions</b>		
Height (mm)	345.0	=
Width (mm)	1600.0	=
Depth (mm)	570.0	=
Piping diameter Gas (mm)	15.9	=
Piping diameter Liquid (mm)	9.5	=
Drain pipe	VP25(OD:32mm)	=
Duct diameters	-	=
<b>Mechanical - Flow</b>		
Static pressure	-	=
Sound pressure - Cooling (dB)- High	43	=
Sound pressure - Heating (dB)- Mid	40	=
Sound pressure (dB)- Low	37	=
Airflow m3/h- High	1800	=
Airflow m3/h- Mid	1482	=
Airflow m3/h- Low	1230	=
Power Consumption W- High	88	=
Power Consumption W- Mid	78	=
Power Consumption W- Low	71	=
<b>Mechanical - Loads</b>		
Seasonal and Rated Efficiency	-	=
Part Load	-	=
Capacities KW - Cooling	14	=
Capacities KW - Heating	16	=
<b>Energy Analysis</b>		
Energy class	-	=
Capacity	-	=
Rated efficiency	-	=

## Family Types

Type name: MMU-UP0481WH-E

Search parameters

Parameter	Value	Formula
<b>Visibility</b>		
Service Area (default)	<input type="checkbox"/>	=
Top Clearance (default)	5.0	=
Right Side Clearance (default)	700.0	=
Left Side Clearance	100.0	=
Back Clearance (default)	20.0	=
<b>Other</b>		
Refrigerant information	R410A	=
Model Name	RBC-UW1403PG(W)-E	=
Dimension-Height (mm)	20.0	=
Dimension-Width (mm)	1835.0	=
Dimension-Depth (mm)	680.0	=
Weight (Kg)	36	=
<b>Identity Data</b>		
Article Description	Cassette 2-way	=
Article Type	MMU-UP0481WH-E	=
Base Family Version		=
CB-NL Class		=
Content Supplier URL	www.hcltech.com	=
Copyright	©Toshiba / HCL	= "©Toshiba / HCL"
Custom	<input checked="" type="checkbox"/>	=
EMCS	4	= "4"
ETIM Article Class	EC001213	= "EC001213"
Family Version		=
GLN		=
GTIN		=
Internal Art. No.		=
MEPcontent Class	HEATPUMP	= "HEATPUMP"
Manufacturer Art. No.	MMU-UP0481WH-E	=
Manufacturer URL	https://www.toshiba-carrier.co.jp/global/	=
Product Line	TCC	= "TCC"
Revit Version		=
Stabu Code		=
Type Image		=
Keynote		=
Model	MMU-UP0481WH-E	=
Manufacturer	Toshiba	= "Toshiba"
Type Comments		=
URL	https://www.toshiba-carrier.co.jp/global/	=
Description	Cassette 2-way	=
Assembly Code		=
Cost		=
Watermarked By		=

# MMU-UP0561WH-E

## Family Types

Type name: MMU-UP0561WH-E

Search parameters

Parameter	Value	Formula
<b>Materials and Finishes</b>		
Red	Colour RGB-255 000 000	=
White	Colour RGB-255 255 255	=
<b>Electrical</b>		
MOCP (A)	15	=
MCA (A)	1.09	=
Running current-Cooling (A)	0.75	=
Power consumption-Cooling (Kw)	0.117	=
Running current-Heating	-	=
Power consumption-Heating	-	=
Frequency (Hz)	50Hz/ 220-240V	=
Voltage (V)	60Hz 208-230V	=
Starting current	1.13	=
<b>Dimensions</b>		
Height (mm)	345.0	=
Width (mm)	1600.0	=
Depth (mm)	570.0	=
Piping diameter Gas (mm)	15.9	=
Piping diameter Liquid (mm)	9.5	=
Drain pipe	VP25(OD:32mm)	=
Duct diameters	-	=
<b>Mechanical - Flow</b>		
Static pressure	-	=
Sound pressure - Cooling (dB)- High	46	=
Sound pressure - Heating (dB)- Mid	42	=
Sound pressure (dB)- Low	39	=
Airflow m3/h- High	2040	=
Airflow m3/h- Mid	1578	=
Airflow m3/h- Low	1320	=
Power Consumption W- High	117	=
Power Consumption W- Mid	99	=
Power Consumption W- Low	89	=
<b>Mechanical - Loads</b>		
Seasonal and Rated Efficiency	-	=
Part Load	-	=
Capacities KW - Cooling	16	=
Capacities KW - Heating	18	=
<b>Energy Analysis</b>		
Energy class	-	=
Capacity	-	=
Rated efficiency	-	=

## Family Types

Type name: MMU-UP0561WH-E

Search parameters

Parameter	Value	Formula
<b>Visibility</b>		
Service Area (default)	<input type="checkbox"/>	=
Top Clearance (default)	5.0	=
Right Side Clearance (default)	700.0	=
Left Side Clearance	100.0	=
Back Clearance (default)	20.0	=
<b>Other</b>		
Refrigerant information	R410A	=
Model Name	RBC-UW1403PG(W)-E	=
Dimension-Height (mm)	20.0	=
Dimension-Width (mm)	1835.0	=
Dimension-Depth (mm)	680.0	=
Weight (Kg)	36	=
<b>Identity Data</b>		
Article Description	Cassette 2-way	=
Article Type	MMU-UP0561WH-E	=
Base Family Version		=
CB-NL Class		=
Content Supplier URL	www.hcltech.com	=
Copyright	©Toshiba / HCL	= "©Toshiba / HCL"
Custom	<input checked="" type="checkbox"/>	=
EMCS	4	= "4"
ETIM Article Class	EC001213	= "EC001213"
Family Version		=
GLN		=
GTIN		=
Internal Art. No.		=
MEPcontent Class	HEATPUMP	= "HEATPUMP"
Manufacturer Art. No.	MMU-UP0561WH-E	=
Manufacturer URL	https://www.toshiba-carrier.co.jp/global/	=
Product Line	TCC	= "TCC"
Revit Version		=
Stabu Code		=
Type Image		=
Keynote		=
Model	MMU-UP0561WH-E	=
Manufacturer	Toshiba	= "Toshiba"
Type Comments		=
URL	https://www.toshiba-carrier.co.jp/global/	=
Description	Cassette 2-way	=
Assembly Code		=
Cost		=
Watermarked By		=



**Thank You**