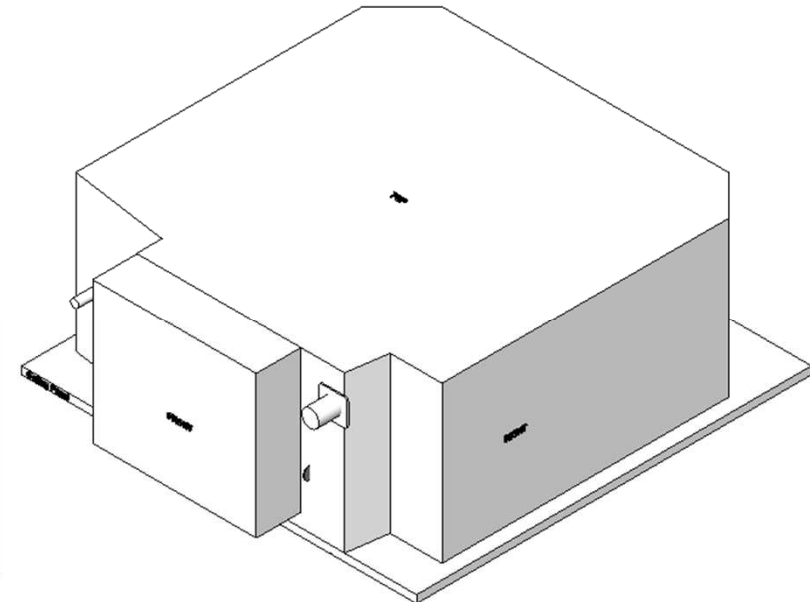
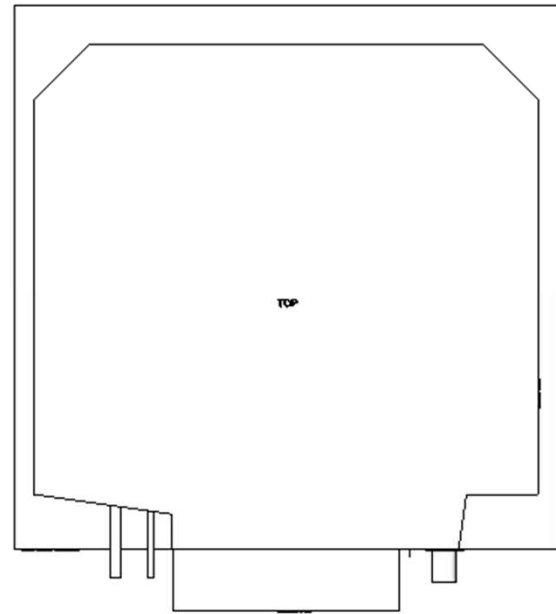
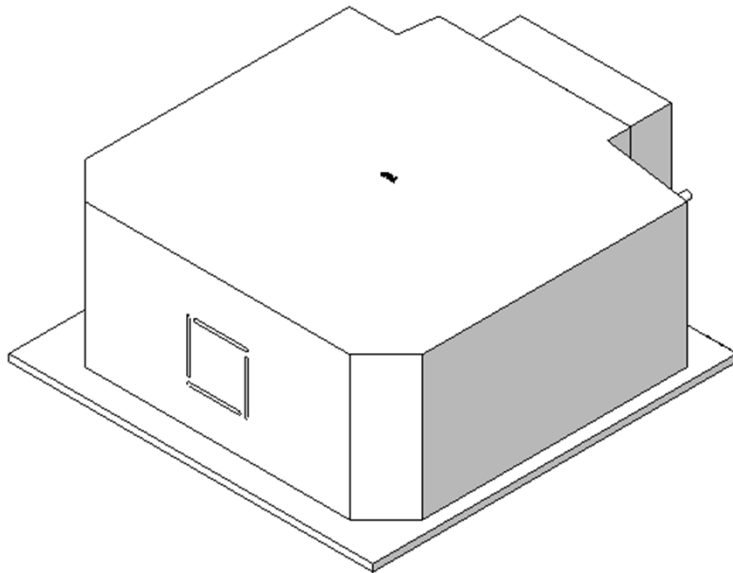
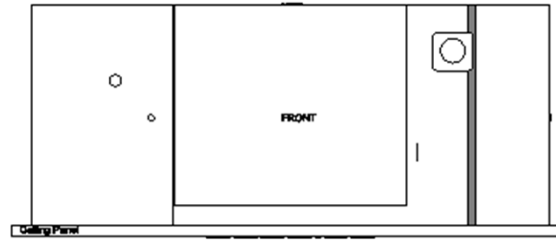
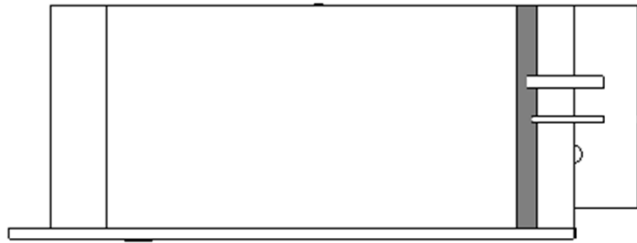


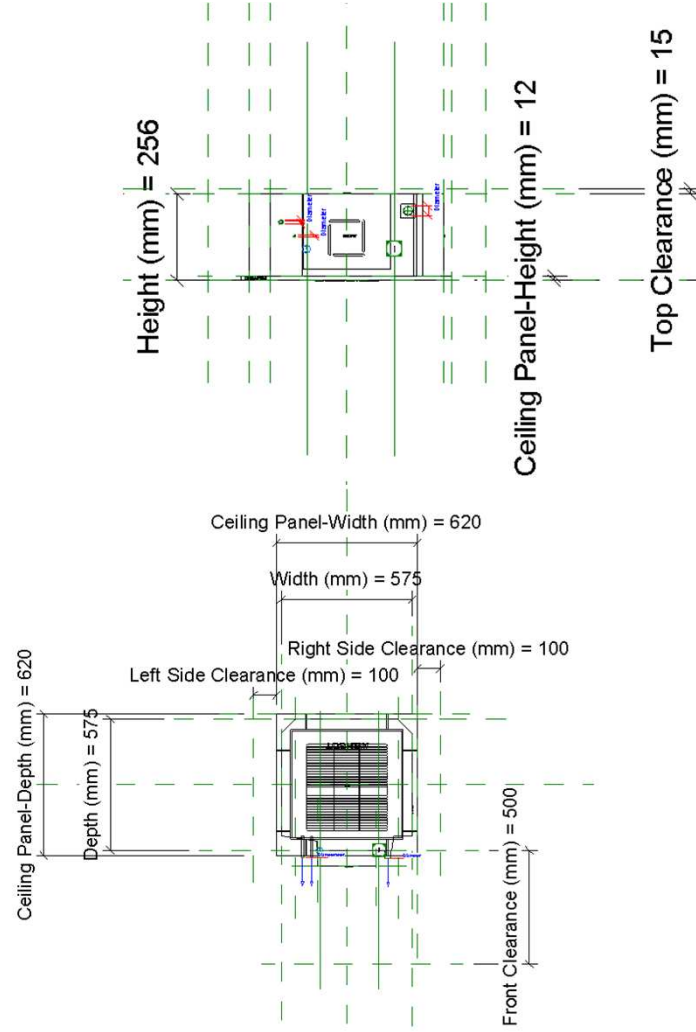
# 15. RAV\_RM1MUT\_30-56

5-04-2019

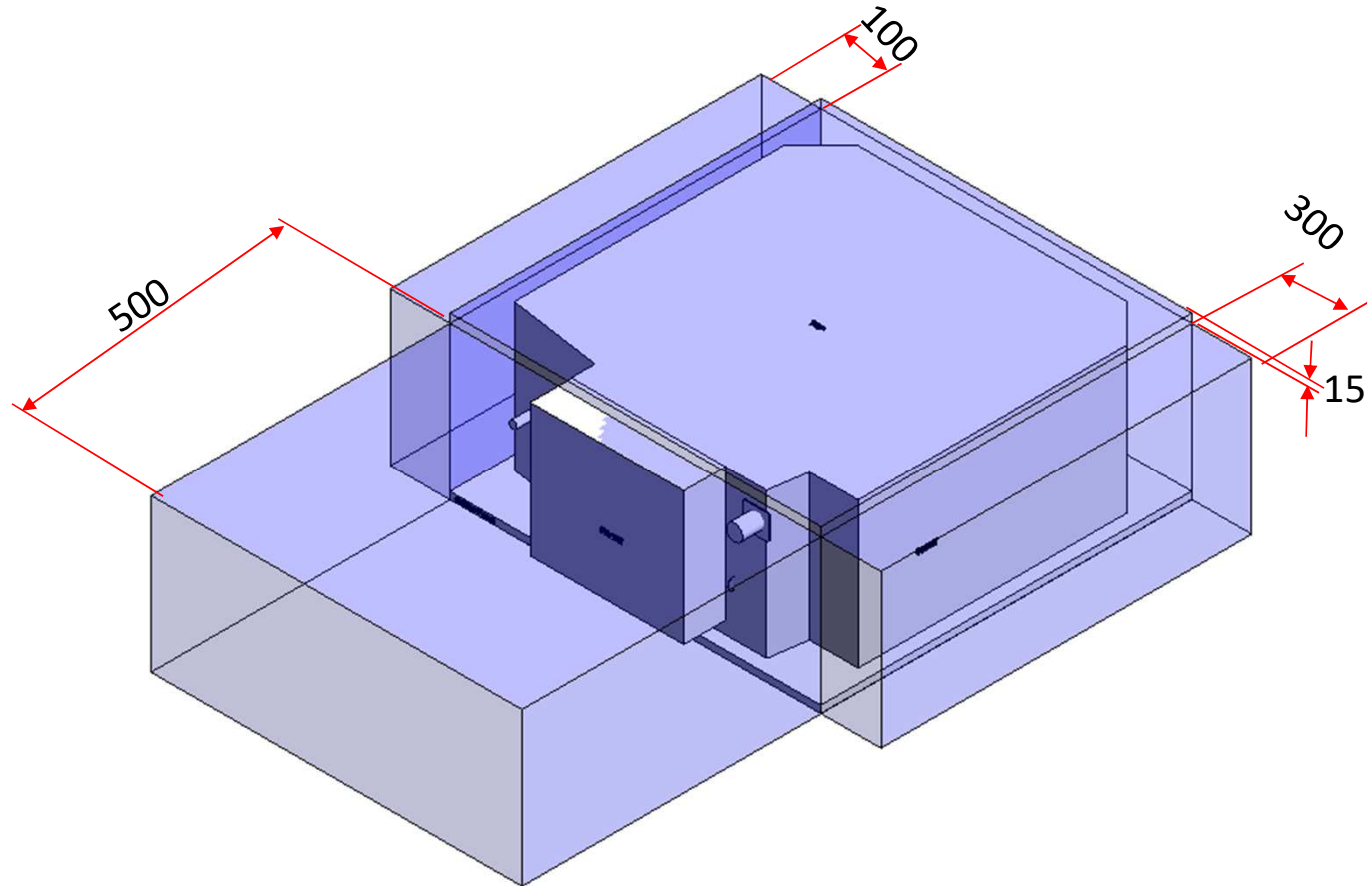
# RAV\_RM1MUT\_30-56



# RAV\_RM1MUT\_30-56



# RAS\_RAV\_RM1MUT\_30-56 Service Area



# Electrical Connector

Properties

R

Connector Element (1) Edit Type

Electrical - Loads

System Type	Controls
-------------	----------

Identity Data

Utility	<input type="checkbox"/>
Connector Description	CONTROL CONNECTION PORT

R

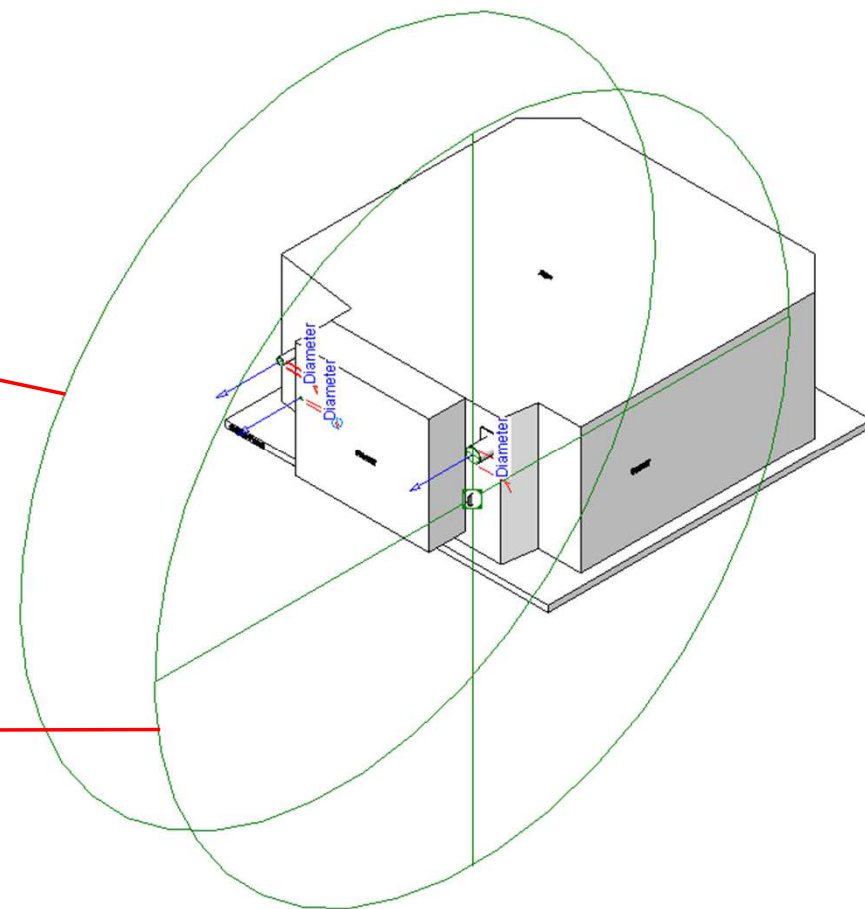
Connector Element (1) Edit Type

Electrical - Loads

System Type	Power - Unbalanced
Number of Poles	1
Power Factor State	Lagging
Load Classification	Other
Load Sub-Classification Motor	<input type="checkbox"/>
Voltage	0.00 V
Apparent Load Phase 1	0.00 VA
Apparent Load Phase 2	0.00 VA
Apparent Load Phase 3	0.00 VA
Power Factor	1.000000

Identity Data

Utility	<input type="checkbox"/>
Connector Description	ELECTRICAL CONNECTOR



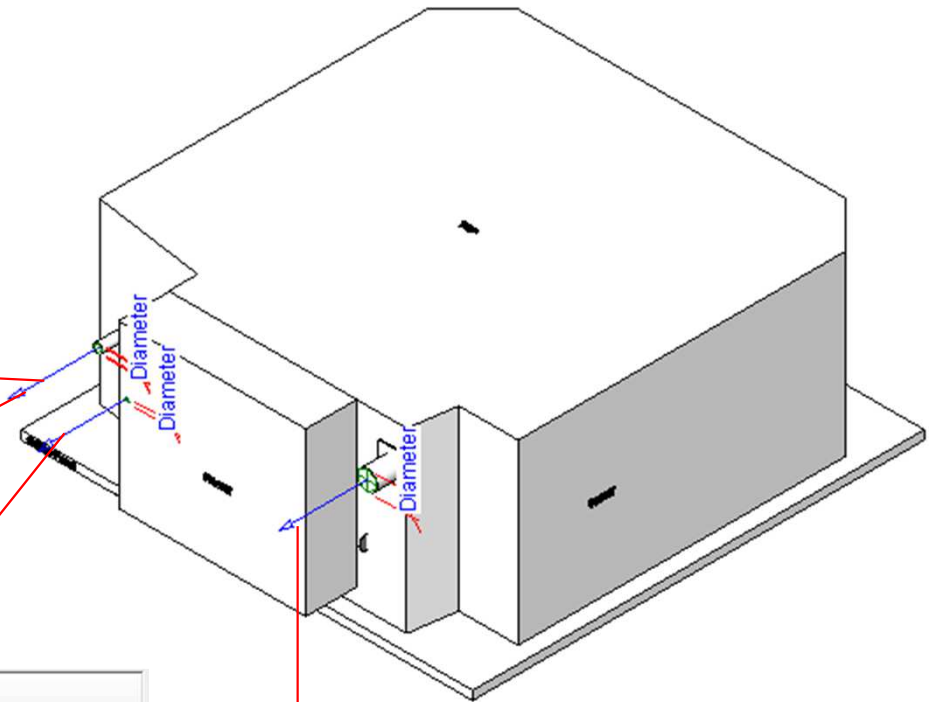
# Pipe Connectors

R	
Connector Element (1) Edit Type	
Dimensions	
Diameter	12.7
Mechanical	
K Coefficient	0.000000
Flow Factor	0.000000
Flow Configuration	Calculated
Flow Direction	Bidirectional
Loss Method	Not Defined
Allow Slope Adjustments	<input type="checkbox"/>
System Classification	Hydronic Return
Mechanical - Flow	
Flow	0.00 L/s
Pressure Drop	0.00 Pa
Identity Data	
Utility	<input type="checkbox"/>
Connector Description	HYDRONIC RETURN (GAS) PORT @ 12.7mm

R	
Connector Element (1) Edit Type	
Dimensions	
Diameter	9.5
Mechanical	
K Coefficient	0.000000
Flow Factor	0.000000
Flow Configuration	Calculated
Flow Direction	Bidirectional
Loss Method	Not Defined
Allow Slope Adjustments	<input type="checkbox"/>
System Classification	Hydronic Return
Mechanical - Flow	
Flow	0.00 L/s
Pressure Drop	0.00 Pa
Identity Data	
Utility	<input type="checkbox"/>
Connector Description	HYDRONIC RETURN (GAS) PORT @ 9.5mm

R	
Connector Element (1) Edit Type	
Dimensions	
Diameter	6.4
Mechanical	
K Coefficient	0.000000
Flow Factor	0.000000
Flow Configuration	Calculated
Flow Direction	Bidirectional
Loss Method	Not Defined
Allow Slope Adjustments	<input type="checkbox"/>
System Classification	Hydronic Supply
Mechanical - Flow	
Flow	0.00 L/s
Pressure Drop	0.00 Pa
Identity Data	
Utility	<input type="checkbox"/>
Connector Description	HYDRONIC SUPPLY (LIQUID) PORT @6.4mm

R	
Connector Element (1) Edit Type	
Dimensions	
Diameter	27.0
Mechanical	
K Coefficient	0.000000
Flow Factor	0.000000
Flow Configuration	Calculated
Flow Direction	Bidirectional
Loss Method	Not Defined
Allow Slope Adjustments	<input type="checkbox"/>
System Classification	Vent
Mechanical - Flow	
Flow	0.00 L/s
Pressure Drop	0.00 Pa
Identity Data	
Utility	<input type="checkbox"/>
Connector Description	DRAIN PORT @ 27mm



# RAV-RM301MUT-E

Family Types

Type name: RAV-RM301MUT-E

Search parameters

Parameter	Value	Formula	Lock
<b>Materials and Finishes</b>			
Red	Colour RGB-250 000 000	=	
White	Colour- RGB -255 255 255	=	
<b>Electrical</b>			
MOCP (A)	15.0	=	
MCA (A)		=	
Running current-Cooling (A)	2.98 - 2.73	=	
Power consumption-Cooling	0.59	=	
Running current-Heating (A)	3.75 - 3.44	=	
Power consumption-Heating (Kw)	0.76	=	
Frequency (Hz)	50Hz/ 220-240V	=	
Voltage (V)	60Hz/ 220V	=	
Starting current (A)	7.9	=	
<b>Dimensions</b>			
Height (mm)	256.0	= if(A = 1, 256 mm, 550 mm)	<input checked="" type="checkbox"/>
Width (mm)	575.0	= if(A = 1, 575 mm, 780 mm)	<input checked="" type="checkbox"/>
Depth (mm)	575.0	= if(A = 1, 575 mm, 290 mm)	<input checked="" type="checkbox"/>
Weight (Kg)	15	=	
Duct diameters	0.0	=	<input type="checkbox"/>
Hydronic Return Diameter (mm)	9.5	=	<input checked="" type="checkbox"/>
Hydronic Supply Diameter (mm)	6.4	=	<input checked="" type="checkbox"/>
Drain Pipe Diameter (mm)	VP20 (OD:26)	=	<input checked="" type="checkbox"/>
Ceiling Panel-Height (mm)	12.0	=	<input checked="" type="checkbox"/>
Ceiling Panel-Depth (mm)	620.0	=	<input checked="" type="checkbox"/>
Ceiling Panel-Width (mm)	620.0	=	<input type="checkbox"/>
<b>Mechanical - Flow</b>			
Static pressure		=	
Sound pressure - High (dB)	38	=	
Sound pressure - Mid (dB)	36	=	
Sound pressure - Low (dB)	30	=	
Airflow - (m3/h)	640	=	
<b>Energy Analysis</b>			
Rated Capacity kW-(Cooling/Heating)	2.5 / 3.4	=	
Rated Power Consumption kW-(Cooling)	0.59 / 0.76	=	
Rated efficiency-(EER / COP)	4.24 / 4.47	=	
Energy class-(Cooling/Heating)	A+ / A++	=	
Seasonal Efficiency-(SEER / SCOP)	5.94 / 4.70	=	
Pdesigh-(Cooling/Heating)	2.5 / 2.3	=	
<b>Visibility</b>			
Ceiling Panel	<input checked="" type="checkbox"/>	=	
Service Area (default)	<input checked="" type="checkbox"/>	=	
Front Clearance (mm) (default)	500.0	= if(A = 1, 500 mm, 1000 mm)	<input checked="" type="checkbox"/>
Back Clearance (mm) (default)	0.0	= if(A = 1, 0 mm, 150 mm)	<input checked="" type="checkbox"/>
Left Side Clearance (mm) (default)	100.0	= if(A = 1, 100 mm, 300 mm)	<input checked="" type="checkbox"/>

**Other**

Ceiling Panel (Sold Separately) - Model	RBC-UM21PG(W)-E	=	
A	1.000000	=	
Drain pipe	VP20(OD: 26mm)	=	
Operating range-(Cooling)	21 - 32	=	
Operating range-(Heating)	0 - 28	=	
Reference 1	450.0	= if(A = 1, 450 mm, 655 mm)	<input checked="" type="checkbox"/>
Reference 2	450.0	= if(A = 1, 450 mm, 165 mm)	<input checked="" type="checkbox"/>
Refrigerant Information	R32	=	
<b>Identity Data</b>			
Article Description	R32 Compact cassette	=	
Article Type	RAV-RM301MUT-E	=	
Assembly Code		=	
Base Family Version		=	
CB-NL Class		=	
Content Supplier URL	www.hcltech.com	=	
Copyright	©Toshiba / HCL	=	"©Toshiba / HCL"
Cost		=	
Description	R32 Compact cassette	=	
EMCS	4	=	"4"
ETIM Article Class	EC001213	=	"EC001213"
Family Version		=	
GLN		=	
GTIN		=	
Internal Art. No.		=	
Keynote		=	
MEPcontent Class	HEATPUMP	=	"HEATPUMP"
Manufacturer	Toshiba	=	"Toshiba"
Manufacturer Art. No.	RAV-RM301MUT-E	=	
Manufacturer URL	https://www.toshiba-carrier.co.jp/glo	=	
Model	RAV-RM301MUT-E	=	
Product Line	TCC	=	
Revit Version	2018	=	"2018"
Stabu Code		=	
Type Comments		=	
Type Image		=	
URL	https://www.toshiba-carrier.co.jp/glo	=	
Watermarked By		=	
Wholesaler		=	
Wholesaler Art. No.		=	

Manage Lookup Tables

How do I manage family types?

OK Cancel Apply

# RAV-RM401MUT-E

Family Types

Type name: RAV-RM401MUT-E

Search parameters

Parameter	Value	Formula	Lock
<b>Materials and Finishes</b>			
Red	Colour- RGB-250 000 000	=	
White	Colour- RGB-255 255 255	=	
<b>Electrical</b>			
MOCP (A)	15.0	=	
MCA (A)		=	
Running current-Cooling (A)	4.40 - 4.03	=	
Power consumption-Cooling	0.90	=	
Running current-Heating (A)	4.64 - 4.26	=	
Power consumption-Heating (Kw)	0.95	=	
Frequency (Hz)	50Hz/ 220-240V	=	
Voltage (V)	60Hz/ 220V	=	
Starting current (A)		=	
<b>Dimensions</b>			
Height (mm)	256.0	= if(A = 1, 256 mm, 550 mm)	<input checked="" type="checkbox"/>
Width (mm)	575.0	= if(A = 1, 575 mm, 780 mm)	<input checked="" type="checkbox"/>
Depth (mm)	575.0	= if(A = 1, 575 mm, 290 mm)	<input checked="" type="checkbox"/>
Weight (Kg)	15	=	
Duct diameters	0.0	=	<input type="checkbox"/>
Hydronic Return Diameter (mm)	12.7	=	<input checked="" type="checkbox"/>
Hydronic Supply Diameter (mm)	6.4	=	<input checked="" type="checkbox"/>
Drain Pipe Diameter (mm)	VP20 (OD:26)	=	
Ceiling Panel-Height (mm)	12.0	=	<input checked="" type="checkbox"/>
Ceiling Panel-Depth (mm)	620.0	=	<input checked="" type="checkbox"/>
Ceiling Panel-Width (mm)	620.0	=	<input type="checkbox"/>
<b>Mechanical - Flow</b>			
Static pressure		=	
Sound pressure - High (dB)	41	=	
Sound pressure - Mid (dB)	36	=	
Sound pressure - Low (dB)	32	=	
Airflow - (m <sup>3</sup> /h)	660	=	
<b>Energy Analysis</b>			
Rated Capacity kW-(Cooling/Heating)	3.6 / 4.0	=	
Rated Power Consumption kW-(Cooling)	0.90 / 0.95	=	
Rated efficiency-(EER / COP)	4.00 / 4.21	=	
Energy class-(Cooling/Heating)	A+ / A++	=	
Seasonal Efficiency-(SEER / SCOP)	5.76 / 4.44	=	
Pdesign-(Cooling/Heating)	3.6 / 2.7	=	
<b>Visibility</b>			
Ceiling Panel	<input checked="" type="checkbox"/>	=	
Service Area (default)	<input checked="" type="checkbox"/>	=	
Front Clearance (mm) (default)	500.0	= if(A = 1, 500 mm, 1000 mm)	<input checked="" type="checkbox"/>
Back Clearance (mm) (default)	0.0	= if(A = 1, 0 mm, 150 mm)	<input checked="" type="checkbox"/>
Left Side Clearance (mm) (default)	100.0	= if(A = 1, 100 mm, 300 mm)	<input checked="" type="checkbox"/>

**Other**

Ceiling Panel (Sold Separately) - Model	RBC-UM21PG(W)-E	=	
A	1.000000	=	
Drain pipe	VP20(OD: 26mm)	=	
Operating range-(Cooling)	21 - 32	=	
Operating range-(Heating)	0 - 28	=	
Reference 1	450.0	= if(A = 1, 450 mm, 655 mm)	<input checked="" type="checkbox"/>
Reference 2	450.0	= if(A = 1, 450 mm, 165 mm)	<input checked="" type="checkbox"/>
Refrigerant Information	R410A / R32	=	
<b>Identity Data</b>			
Article Description	R32 Compact cassette	=	
Article Type	RAV-RM401MUT-E	=	
Assembly Code		=	
Base Family Version		=	
CB-NL Class		=	
Content Supplier URL	www.hcltech.com	=	
Copyright	©Toshiba / HCL	= "©Toshiba / HCL"	
Cost		=	
Description	R32 Compact cassette	=	
EMCS	4	= "4"	
ETIM Article Class	EC001213	= "EC001213"	
Family Version		=	
GLN		=	
GTIN		=	
Internal Art. No.		=	
Keynote		=	
MEPcontent Class	HEATPUMP	= "HEATPUMP"	
Manufacturer	Toshiba	= "Toshiba"	
Manufacturer Art. No.	RAV-RM401MUT-E	=	
Manufacturer URL	https://www.toshiba-carrier.co.jp/glo	=	
Model	RAV-RM401MUT-E	=	
Product Line	TCC	=	
Revit Version	2018	= "2018"	
Stabu Code		=	
Type Comments		=	
Type Image		=	
URL	https://www.toshiba-carrier.co.jp/glo	=	
Watermarked By		=	
Wholesaler		=	
Wholesaler Art. No.		=	

Manage Lookup Tables

[How do I manage family types?](#)

OK Cancel Apply



# RAV-RM561MUT-E

Family Types

Type name: RAV-RM561MUT-E

Search parameters

Parameter	Value	Formula	Lock
<b>Materials and Finishes</b>			
Red	Colour RGB-250 000 000	=	
White	Colour- RGB -255 255 255	=	
<b>Electrical</b>			
MOCP (A)	15.0	=	
MCA (A)		=	
Running current-Cooling (A)	7.49 - 6.87	=	
Power consumption-Cooling	1.56	=	
Running current-Heating (A)	7.68 - 7.04	=	
Power consumption-Heating (Kw)	1.60	=	
Frequency (Hz)	50Hz/ 220-240V	=	
Voltage (V)		=	
Starting current (A)	13.1	=	
<b>Dimensions</b>			
Height (mm)	256.0	= if(A = 1, 256 mm, 550 mm)	<input checked="" type="checkbox"/>
Width (mm)	575.0	= if(A = 1, 575 mm, 780 mm)	<input checked="" type="checkbox"/>
Depth (mm)	575.0	= if(A = 1, 575 mm, 290 mm)	<input checked="" type="checkbox"/>
Weight (Kg)	15	=	
Duct diameters	0.0	=	<input type="checkbox"/>
Hydronic Return Diameter (mm)	12.7	=	<input checked="" type="checkbox"/>
Hydronic Supply Diameter (mm)	6.4	=	<input checked="" type="checkbox"/>
Drain Pipe Diameter (mm)	VP20 (OD:26)	=	
Ceiling Panel-Height (mm)	12.0	=	<input checked="" type="checkbox"/>
Ceiling Panel-Depth (mm)	620.0	=	<input checked="" type="checkbox"/>
Ceiling Panel-Width (mm)	620.0	=	<input type="checkbox"/>
<b>Mechanical - Flow</b>			
Static pressure		=	
Sound pressure - High (dB)	44	=	
Sound pressure - Mid (dB)	39	=	
Sound pressure - Low (dB)	35	=	
Airflow - (m3/h)	798	=	
<b>Energy Analysis</b>			
Rated Capacity kW-(Cooling/Heating)	5.0 / 5.6	=	
Rated Power Consumption kW-(Cooling)	1.56 / 1.60	=	
Rated efficiency-(EER / COP)	3.21 / 3.50	=	
Energy class-(Cooling/Heating)	A+ / A+	=	
Seasonal Efficiency-(SEER / SCOP)	6.02 / 4.30	=	
Pdesigh-(Cooling/Heating)	5.0 / 3.8	=	
<b>Visibility</b>			
Ceiling Panel	<input checked="" type="checkbox"/>	=	
Service Area (default)	<input checked="" type="checkbox"/>	=	
Front Clearance (mm) (default)	500.0	= if(A = 1, 500 mm, 1000 mm)	<input checked="" type="checkbox"/>
Back Clearance (mm) (default)	0.0	= if(A = 1, 0 mm, 150 mm)	<input checked="" type="checkbox"/>
Left Side Clearance (mm) (default)	100.0	= if(A = 1, 100 mm, 300 mm)	<input checked="" type="checkbox"/>

**Other**

Ceiling Panel (Sold Separately) - Model	RBC-UM21PG(W)-E	=	
A	1.000000	=	
Drain pipe	VP20(OD: 26mm)	=	
Operating range-(Cooling)	21 - 32	=	
Operating range-(Heating)	0 - 28	=	
Reference 1	450.0	= if(A = 1, 450 mm, 655 mm)	<input checked="" type="checkbox"/>
Reference 2	450.0	= if(A = 1, 450 mm, 165 mm)	<input checked="" type="checkbox"/>
Refrigerant Information	R32	=	
<b>Identity Data</b>			
Article Description	R32 Compact cassette	=	
Article Type	RAV-RM561MUT-E	=	
Assembly Code		=	
Base Family Version		=	
CB-NL Class		=	
Content Supplier URL	www.hcltech.com	=	
Copyright	©Toshiba / HCL	=	"©Toshiba / HCL"
Cost		=	
Description	R32 Compact cassette	=	
EMCS	4	=	"4"
ETIM Article Class	EC001213	=	"EC001213"
Family Version		=	
GLN		=	
GTIN		=	
Internal Art. No.		=	
Keynote		=	
MEPcontent Class	HEATPUMP	=	"HEATPUMP"
Manufacturer	Toshiba	=	"Toshiba"
Manufacturer Art. No.	RAV-RM561MUT-E	=	
Manufacturer URL	https://www.toshiba-carrier.co.jp/glo	=	
Model	RAV-RM561MUT-E	=	
Product Line	TCC	=	
Revit Version	2018	=	"2018"
Stabu Code		=	
Type Comments		=	
Type Image		=	
URL	https://www.toshiba-carrier.co.jp/glo	=	
Watermarked By		=	
Wholesaler		=	
Wholesaler Art. No.		=	

Manage Lookup Tables

OK Cancel Apply

[How do I manage family types?](#)

# RAV-SM457MUT-E

Family Types

Type name: RAV-SM457MUT-E

Search parameters

Parameter	Value	Formula	Lock
<b>Materials and Finishes</b>			
Red	Colour RGB-250 000 000	=	
White	Colour- RGB -255 255 255	=	
<b>Electrical</b>			
MOCP (A)	15.0	=	
MCA (A)		=	
Running current-Cooling (A)	2.98 - 2.73	=	
Power consumption-Cooling	0.59	=	
Running current-Heating (A)	3.75 - 3.44	=	
Power consumption-Heating (Kw)	0.76	=	
Frequency (Hz)	50Hz/ 220-240V	=	
Voltage (V)	60Hz/ 220V	=	
Starting current (A)	7.9	=	
<b>Dimensions</b>			
Height (mm)	256.0	= if(A = 1, 256 mm, 550 mm)	<input checked="" type="checkbox"/>
Width (mm)	575.0	= if(A = 1, 575 mm, 780 mm)	<input checked="" type="checkbox"/>
Depth (mm)	575.0	= if(A = 1, 575 mm, 290 mm)	<input checked="" type="checkbox"/>
Weight (Kg)	15	=	
Duct diameters	0.0	=	<input type="checkbox"/>
Hydronic Return Diameter (mm)	12.7	=	<input checked="" type="checkbox"/>
Hydronic Supply Diameter (mm)	6.4	=	<input checked="" type="checkbox"/>
Drain Pipe Diameter (mm)	VP20 (OD:26)	=	
Ceiling Panel-Height (mm)	12.0	=	<input checked="" type="checkbox"/>
Ceiling Panel-Depth (mm)	620.0	=	<input checked="" type="checkbox"/>
Ceiling Panel-Width (mm)	620.0	=	<input type="checkbox"/>
<b>Mechanical - Flow</b>			
Static pressure		=	
Sound pressure - High (dB)	44	=	
Sound pressure - Mid (dB)	39	=	
Sound pressure - Low (dB)	35	=	
Airflow - (m3/h)	798	=	
<b>Energy Analysis</b>			
Rated Capacity kW-(Cooling/Heating)	2.5 / 3.4	=	
Rated Power Consumption kW-(Cooling)	0.59 / 0.76	=	
Rated efficiency-(EER / COP)	4.24 / 4.47	=	
Energy class-(Cooling/Heating)	A+ / A++	=	
Seasonal Efficiency-(SEER / SCOP)	5.94 / 4.70	=	
Pdesigh-(Cooling/Heating)	2.5 / 2.3	=	
<b>Visibility</b>			
Ceiling Panel	<input checked="" type="checkbox"/>	=	
Service Area (default)	<input type="checkbox"/>	=	
Front Clearance (mm) (default)	500.0	= if(A = 1, 500 mm, 1000 mm)	<input checked="" type="checkbox"/>
Back Clearance (mm) (default)	0.0	= if(A = 1, 0 mm, 150 mm)	<input checked="" type="checkbox"/>
Left Side Clearance (mm) (default)	100.0	= if(A = 1, 100 mm, 300 mm)	<input checked="" type="checkbox"/>

Right Side Clearance (mm) (default)	100.0	= if(A = 1, 100 mm, 300 mm)	<input checked="" type="checkbox"/>
Top Clearance (mm) (default)	15.0	= if(A = 1, 15 mm, 5 mm)	<input checked="" type="checkbox"/>
<b>Other</b>			
Ceiling Panel (Sold Separately) - Model	RBC-UM21PG(W)-E	=	
A	1.000000	=	
Drain pipe	VP20(OD: 26mm)	=	
Operating range-(Cooling)	21 - 32	=	
Operating range-(Heating)	0 - 28	=	
Reference 1	450.0	= if(A = 1, 450 mm, 655 mm)	<input checked="" type="checkbox"/>
Reference 2	450.0	= if(A = 1, 450 mm, 165 mm)	<input checked="" type="checkbox"/>
Refrigerant Information	R32 / R410A	=	
<b>Identity Data</b>			
Article Description	R410A Compact cassette	=	
Article Type	RAV-SM457MUT-E	=	
Assembly Code		=	
Base Family Version		=	
CB-NL Class		=	
Content Supplier URL	www.hcltech.com	=	
Copyright	© Toshiba / HCL	= "©Toshiba / HCL"	
Cost		=	
Description	R410A Compact cassette	=	
EMCS	4	= "4"	
ETIM Article Class	EC001213	= "EC001213"	
Family Version		=	
GLN		=	
GTIN		=	
Internal Art. No.		=	
Keynote		=	
MEPcontent Class	HEATPUMP	= "HEATPUMP"	
Manufacturer	Toshiba	= "Toshiba"	
Manufacturer Art. No.	RAV-SM457MUT-E	=	
Manufacturer URL	https://www.toshiba-carrier.co.jp/glo	=	
Model	RAV-SM457MUT-E	=	
Product Line	TCC	=	
Revit Version	2018	= "2018"	
Stabu Code		=	
Type Comments		=	
Type Image		=	
URL	https://www.toshiba-carrier.co.jp/glo	=	
Watermarked By		=	
Wholesaler		=	
Wholesaler Art. No.		=	

Manage Lookup Tables

OK Cancel Apply

[How do I manage family types?](#)



**Thank You**