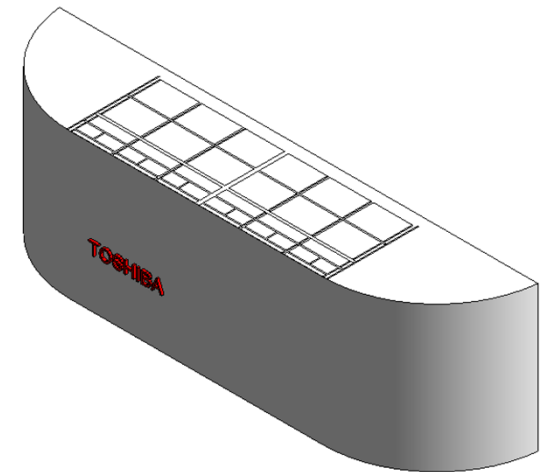
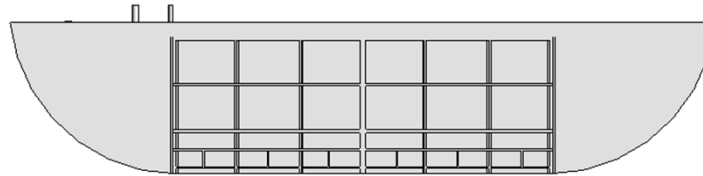
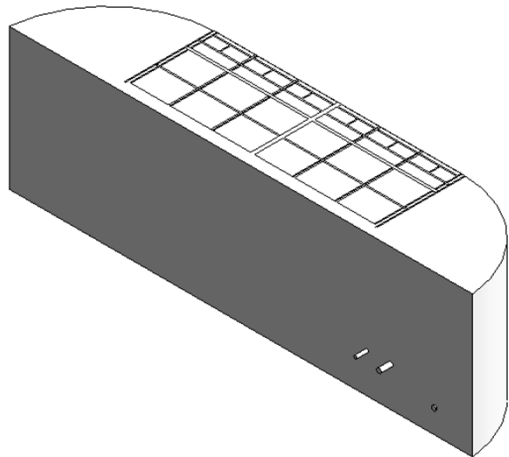
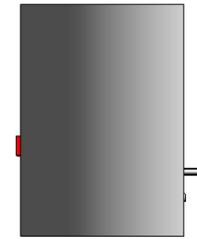
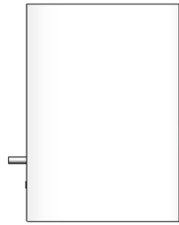


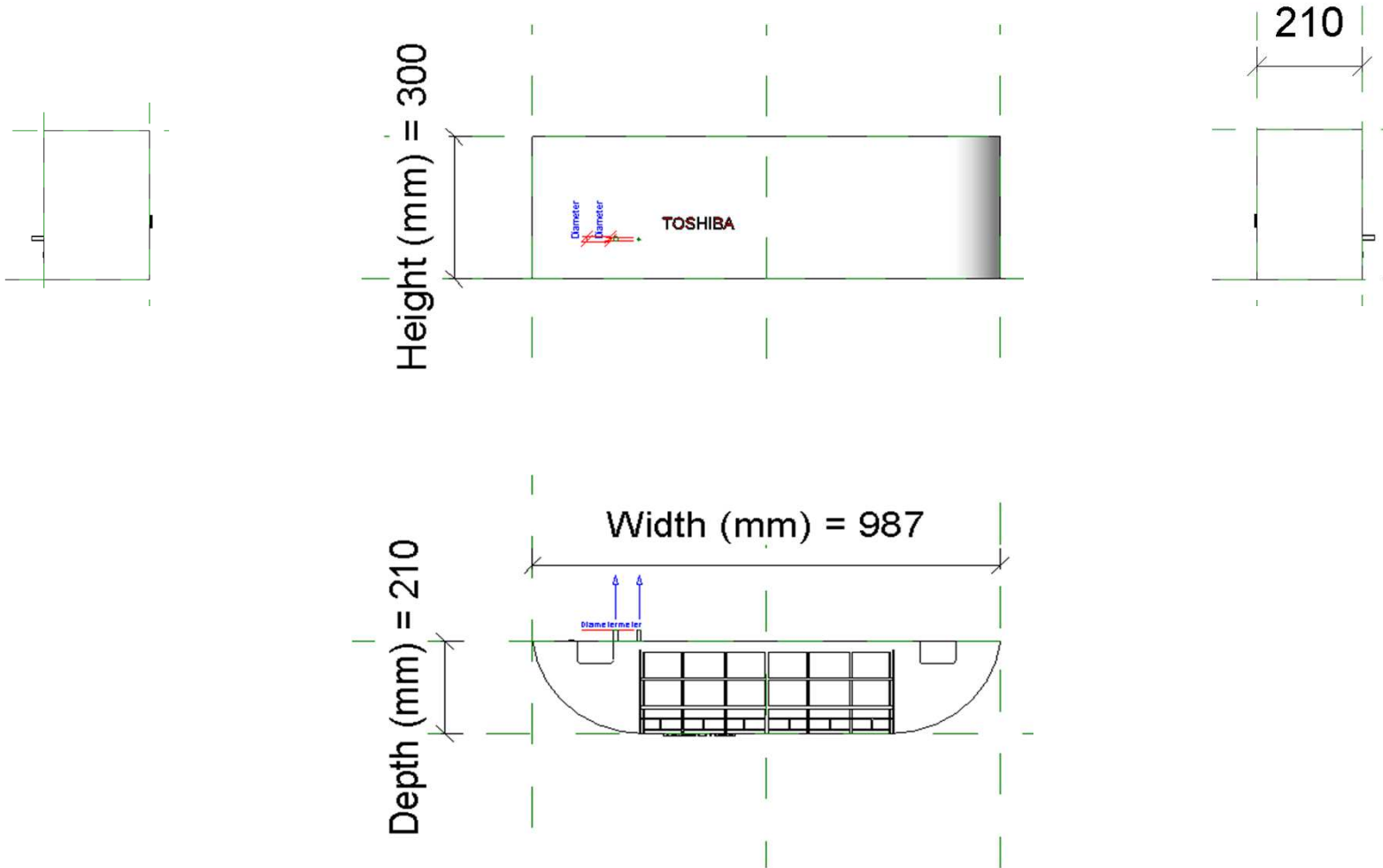
RAS_N4KRVG_10-16

13-01-2021

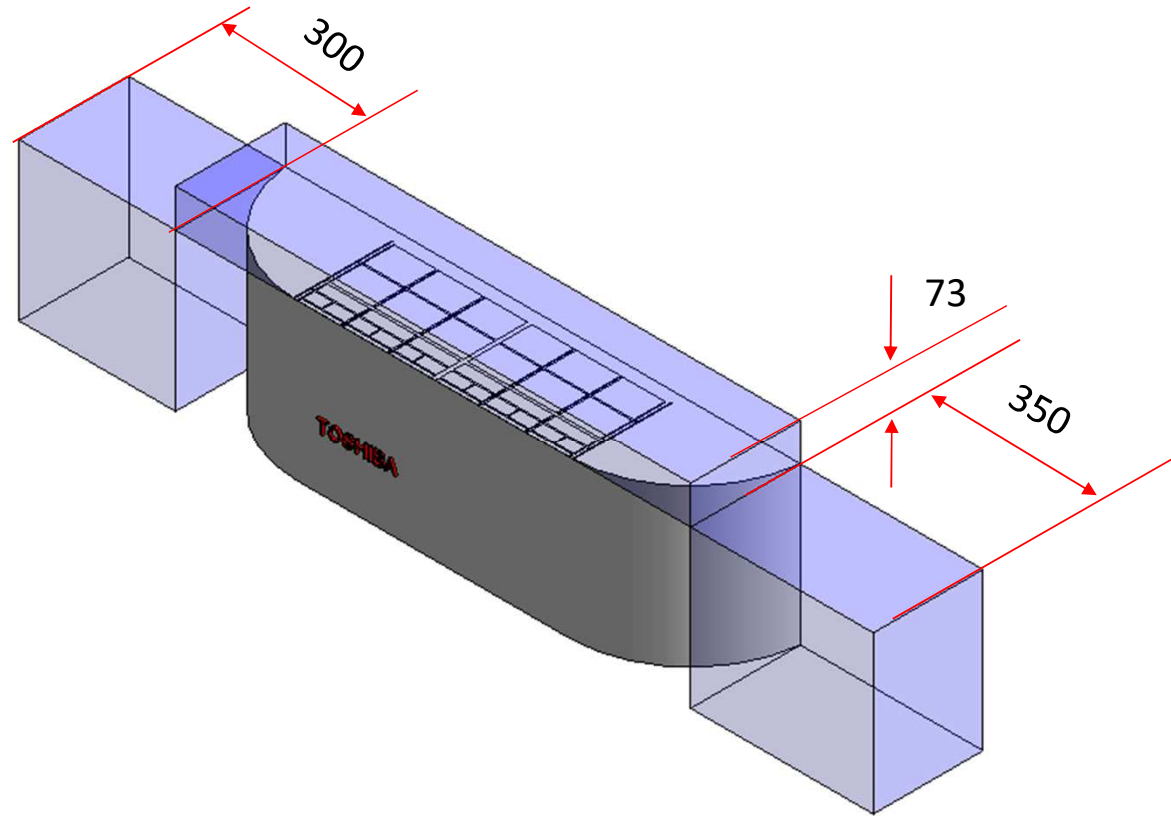
RAS_N4KRVG_10-16



RAS_N4KRVG_10-16

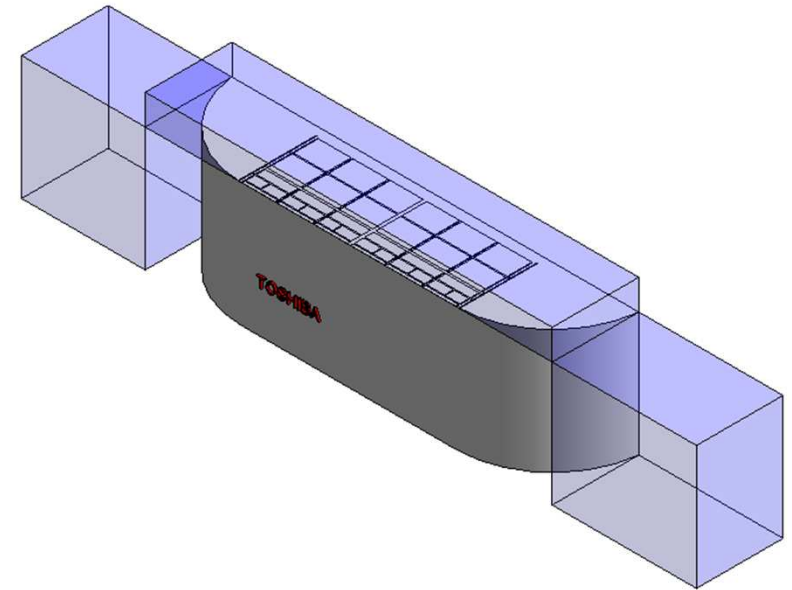


RAS_N4KRVG_10-16 _Service Area



RAS_N4KRVG_10-16

Visibility	
SERVICE AREA (default)	<input checked="" type="checkbox"/>
Top Clearance (default)	73.0
Right Side Clearance (default)	350.0
Left Side Clearance (default)	300.0

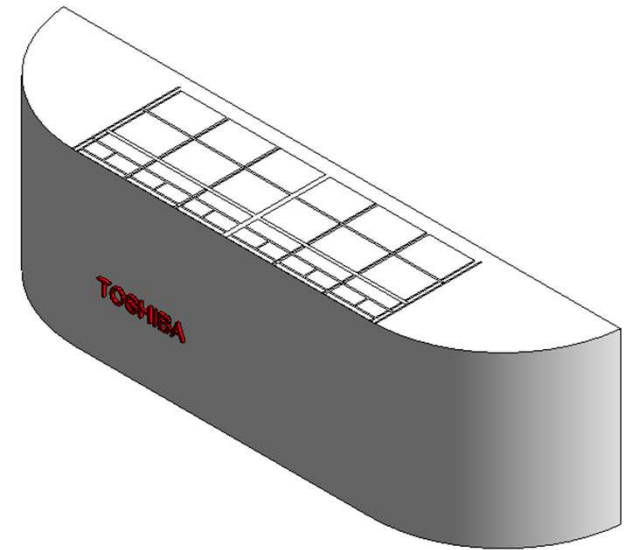


Service Clearance ON

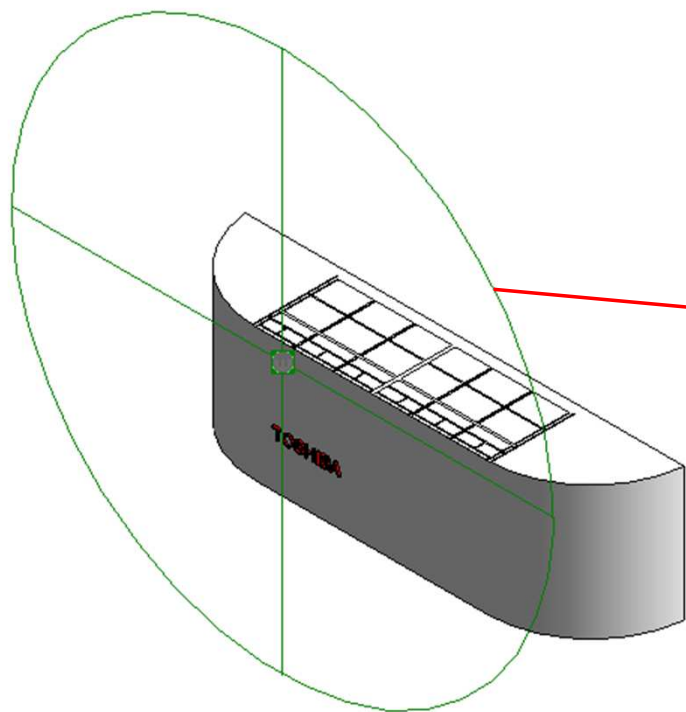
RAS_N4KRVG_10-16

Visibility	
SERVICE AREA (default)	<input type="checkbox"/>
Top Clearance (default)	73.0
Right Side Clearance (default)	350.0
Left Side Clearance (default)	300.0

Service Clearance OFF

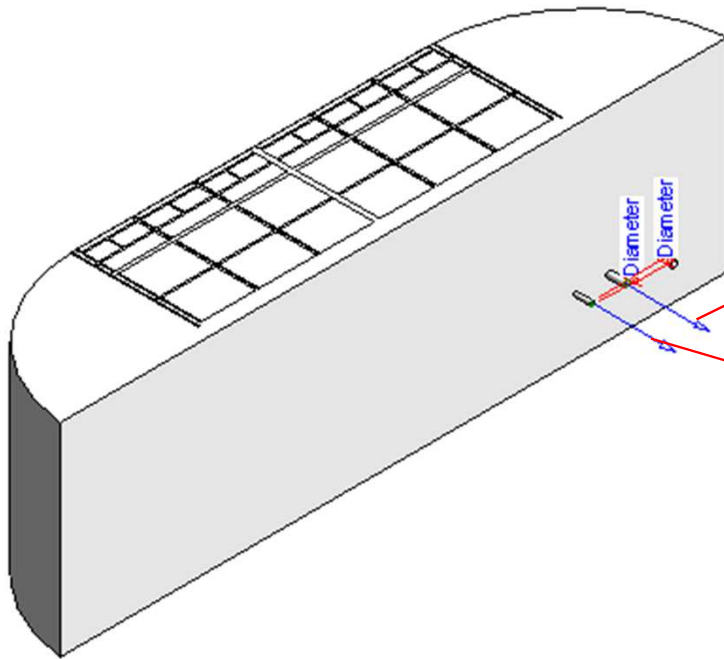


Electrical Connector



Properties	
R	
Connector Element (1) Edit Type	
Electrical - Loads	
System Type	Power - Unbalanced
Number of Poles	1
Power Factor State	Lagging
Load Classification	Other
Load Sub-Classification Motor	<input type="checkbox"/>
Voltage	0.00 V
Apparent Load Phase 1	0.00 VA
Apparent Load Phase 2	0.00 VA
Apparent Load Phase 3	0.00 VA
Power Factor	1.000000
Identity Data	
Utility	<input type="checkbox"/>
Connector Description	ELECTRICAL CONNECTOR

Pipe Connectors



Properties	
R	
Connector Element (1) Edit Type	
Dimensions	
Diameter	9.5
Mechanical	
K Coefficient	0.000000
Flow Factor	0.000000
Flow Configuration	Calculated
Flow Direction	Out
Loss Method	Not Defined
Allow Slope Adjustments	<input type="checkbox"/>
System Classification	Hydronic Return
Mechanical - Flow	
Flow	0.00 L/s
Pressure Drop	0.00 Pa
Identity Data	
Utility	<input type="checkbox"/>
Connector Description	Piping diameter-Gas side

Properties	
R	
Connector Element (1) Edit Type	
Dimensions	
Diameter	6.4
Mechanical	
K Coefficient	0.000000
Flow Factor	0.000000
Flow Configuration	Calculated
Flow Direction	In
Loss Method	Not Defined
Allow Slope Adjustments	<input type="checkbox"/>
System Classification	Hydronic Supply
Mechanical - Flow	
Flow	0.00 L/s
Pressure Drop	0.00 Pa
Identity Data	
Utility	<input type="checkbox"/>
Connector Description	Piping diameter-Liquid side

RAS-B10N4KVRG-E

Family Types

Type name: RAS-B10N4KVRG-E

Search parameters

Parameter	Value	Formula
Materials and Finishes		
Red	Colour RGB-255 000 000	=
White	Colour RGB-255 255 255	=
Electrical		
MOCP (A)	15	=
MCA (A)	-	=
Running current-Cooling	0.25 - 0.23	=
Power consumption-Cooling	35	=
Running current-Heating	0.25 - 0.23	=
Power consumption-Heating	35	=
Frequency (Hz)	50Hz	=
Voltage (V)	220-240V	=
Starting current (A)	-	=
Dimensions		
Height (mm)	300.0	=
Width (mm)	987.0	=
Depth (mm)	210.0	=
Piping diameter Gas (mm)	9.5	=
Piping diameter Liquid (mm)	6.4	=
Drain Pipe(mm)	16	=
Duct diameters(mm)	-	=
Mechanical - Flow		
Static pressure	-	=
Sound pressure dB (A)-Cooling/Heating- High	41 / 41	=
Sound pressure dB (A)-Cooling/Heating- Mid+	36 / 36	=
Sound pressure dB (A)-Cooling/Heating- Mid	31 / 31	=
Sound pressure dB(A)-Cooling/Heating-Low+	27 / 27	=
Cooling/Heating-Cooling/Heating-Low	22 / 22	=
Airflow m3/h- Cooling/Heating	600 / 610	=
Mechanical - Loads		
Rated Capacity kW-Cooling/Heating	2.5 / 3.2	=
Rated Power Consumption kW-Cooling/Heating	0.54 / 0.74	=
Rated efficiency-EER / COP	4.63 / 4.32	=
Energy Analysis		
Energy class-Cooling/Heating	A+++ / A+++	=
Seasonal Efficiency-SEER / SCOP	8.60 / 5.10	=
Pdesign-Cooling/Heating	-	=

Family Types

Type name: RAS-B10N4KVRG-E

Search parameters

Parameter	Value	Formula
Pdesign-Cooling/Heating	-	=
Visibility		
SERVICE AREA (default)	<input type="checkbox"/>	=
Top Clearance (default)	73.0	=
Right Side Clearance (default)	350.0	=
Left Side Clearance (default)	300.0	=
Other		
Compressor-Type	-	=
Compressor-Motor Output W	-	=
Operating range degC-Cooling	21 - 32	=
Operating range degC-Heating	0 - 28	=
Refrigerant Information	R32	=
Weight (Kg)	11	=
Identity Data		
Article Description	Ceiling	=
Article Type	RAS-B10N4KVRG-E	=
Base Family Version		=
CB-NL Class		=
Content Supplier URL	www.hcltech.com	= "www.hcltech.com"
Copyright	©Toshiba / HCL	= "©Toshiba / HCL"
Custom	<input checked="" type="checkbox"/>	= "4"
EMCS	4	= "4"
ETIM Article Class	EC001213	= "EC001213"
Family Version		=
GLN		=
GTIN		=
Internal Art. No.		=
MEPcontent Class	HEATPUMP	= "HEATPUMP"
Manufacturer Art. No.	RAS-B10N4KVRG-E	=
Manufacturer URL	https://www.toshiba-carrier.co.jp/global/	=
Product Line	TCTC	= "TCTC"
Revit Version	2017	= "2017"
Stabu Code		=
Type Image		=
Keynote		=
Model	RAS-B10N4KVRG-E	=
Manufacturer	Toshiba	= "Toshiba"
Type Comments		=
URL	https://www.toshiba-carrier.co.jp/global/	=
Description	Ceiling	=
Assembly Code		=
Cost		=

RAS-B13N4KVRG-E

Family Types		
Type name: RAS-B13N4KVRG-E		
Search parameters		
Parameter	Value	Formula
Materials and Finishes		
Red	Colour RGB-255 000 000	=
White	Colour RGB-255 255 255	=
Electrical		
MOCP (A)	15	=
MCA (A)	-	=
Running current-Cooling	0.28 - 0.26	=
Power consumption-Cooling	40	=
Running current-Heating	0.28 - 0.26	=
Power consumption-Heating	40	=
Frequency (Hz)	50Hz	=
Voltage (V)	220-240V	=
Starting current (A)	-	=
Dimensions		
Height (mm)	300.0	=
Width (mm)	987.0	=
Depth (mm)	210.0	=
Piping diameter Gas (mm)	9.5	=
Piping diameter Liquid (mm)	6.4	=
Drain Pipe(mm)	16	=
Duct diameters(mm)	-	=
Mechanical - Flow		
Static pressure	-	=
Sound pressure dB (A)-Cooling/Heating- High	43 / 43	=
Sound pressure dB (A)-Cooling/Heating- Mid+	38 / 38	=
Sound pressure dB (A)-Cooling/Heating- Mid	34 / 34	=
Sound pressure dB(A)-Cooling/Heating-Low+	28 / 28	=
Cooling/Heating-Cooling/Heating-Low	23 / 23	=
Airflow m3/h- Cooling/Heating	670 / 680	=
Mechanical - Loads		
Rated Capacity kW-Cooling/Heating	3.5 / 4.2	=
Rated Power Consumption kW-Cooling/Heating	0.80 / 1.08	=
Rated efficiency-EER / COP	4.38 / 3.89	=
Energy Analysis		
Energy class-Cooling/Heating	A+++ / A+++	=
Seasonal Efficiency-SEER / SCOP	8.60 / 5.10	=
Pdesign-Cooling/Heating	-	=

Family Types		
Type name: RAS-B13N4KVRG-E		
Search parameters		
Parameter	Value	Formula
Pdesign-Cooling/Heating	-	=
Visibility		
SERVICE AREA (default)	<input type="checkbox"/>	=
Top Clearance (default)	73.0	=
Right Side Clearance (default)	350.0	=
Left Side Clearance (default)	300.0	=
Other		
Compressor-Type	-	=
Compressor-Motor Output W	-	=
Operating range degC-Cooling	21 - 32	=
Operating range degC-Heating	0 - 28	=
Refrigerant Information	R32	=
Weight (Kg)	11	=
Identity Data		
Article Description	Ceiling	=
Article Type	RAS-B13N4KVRG-E	=
Base Family Version		=
CB-NL Class		=
Content Supplier URL	www.hcltech.com	= "www.hcltech.com"
Copyright	©Toshiba / HCL	= "©Toshiba / HCL"
Custom	<input checked="" type="checkbox"/>	=
EMCS	4	= "4"
ETIM Article Class	EC001213	= "EC001213"
Family Version		=
GLN		=
GTIN		=
Internal Art. No.		=
MEPcontent Class	HEATPUMP	= "HEATPUMP"
Manufacturer Art. No.	RAS-B13N4KVRG-E	=
Manufacturer URL	https://www.toshiba-carrier.co.jp/global/	=
Product Line	TCTC	= "TCTC"
Revit Version	2017	= "2017"
Stabu Code		=
Type Image		=
Keynote		=
Model	RAS-B13N4KVRG-E	=
Manufacturer	Toshiba	= "Toshiba"
Type Comments		=
URL	https://www.toshiba-carrier.co.jp/global/	=
Description	Ceiling	=
Assembly Code		=
Cost		=

RAS-B16N4KVRG-E

Family Types

Type name: RAS-B16N4KVRG-E

Search parameters

Parameter	Value	Formula
Materials and Finishes		
Red	Colour RGB-255 000 000	=
White	Colour RGB-255 255 255	=
Electrical		
MOCP (A)	15	=
MCA (A)	-	=
Running current-Cooling	0.31 - 0.29	=
Power consumption-Cooling	45	=
Running current-Heating	0.31 - 0.29	=
Power consumption-Heating	45	=
Frequency (Hz)	50Hz	=
Voltage (V)	220-240V	=
Starting current (A)	-	=
Dimensions		
Height (mm)	300.0	=
Width (mm)	987.0	=
Depth (mm)	210.0	=
Piping diameter Gas (mm)	12.7	=
Piping diameter Liquid (mm)	6.4	=
Drain Pipe(mm)	16	=
Duct diameters(mm)	-	=
Mechanical - Flow		
Static pressure	-	=
Sound pressure dB (A)-Cooling/Heating- High	45 / 45	=
Sound pressure dB (A)-Cooling/Heating- Mid+	40 / 40	=
Sound pressure dB (A)-Cooling/Heating- Mid	36 / 36	=
Sound pressure dB(A)-Cooling/Heating-Low+	30 / 31	=
Cooling/Heating-Cooling/Heating-Low	25 / 26	=
Airflow m3/h- Cooling/Heating	650 / 670	=
Mechanical - Loads		
Rated Capacity kW-Cooling/Heating	4.6 / 5.5	=
Rated Power Consumption kW-Cooling/Heating	1.35 / 1.52	=
Rated efficiency-EER / COP	3.41 / 3.62	=
Energy Analysis		
Energy class-Cooling/Heating	A+++ / A+++	=
Seasonal Efficiency-SEER / SCOP	7.80 / 4.60	=
Pdesigh-Cooling/Heating	-	=

Family Types

Type name: RAS-B16N4KVRG-E

Search parameters

Parameter	Value	Formula
Pdesigh-Cooling/Heating	-	=
Visibility		
SERVICE AREA (default)	<input type="checkbox"/>	=
Top Clearance (default)	73.0	=
Right Side Clearance (default)	350.0	=
Left Side Clearance (default)	300.0	=
Other		
Compressor-Type	-	=
Compressor-Motor Output W	-	=
Operating range degC-Cooling	21 - 32	=
Operating range degC-Heating	0 - 28	=
Refrigerant Information	R32	=
Weight (Kg)	12	=
Identity Data		
Article Description	Ceiling	=
Article Type	RAS-B16N4KVRG-E	=
Base Family Version		=
CB-NL Class		=
Content Supplier URL	www.hcltech.com	= "www.hcltech.com"
Copyright	©Toshiba / HCL	= "©Toshiba / HCL"
Custom	<input checked="" type="checkbox"/>	=
EMCS	4	= "4"
ETIM Article Class	EC001213	= "EC001213"
Family Version		=
GLN		=
GTIN		=
Internal Art. No.		=
MEPcontent Class	HEATPUMP	= "HEATPUMP"
Manufacturer Art. No.	RAS-B16N4KVRG-E	=
Manufacturer URL	https://www.toshiba-carrier.co.jp/global/	=
Product Line	TCTC	= "TCTC"
Revit Version	2017	= "2017"
Stabu Code		=
Type Image		=
Keynote		=
Model	RAS-B16N4KVRG-E	=
Manufacturer	Toshiba	= "Toshiba"
Type Comments		=
URL	https://www.toshiba-carrier.co.jp/global/	=
Description	Ceiling	=
Assembly Code		=
Cost		=



Thank You