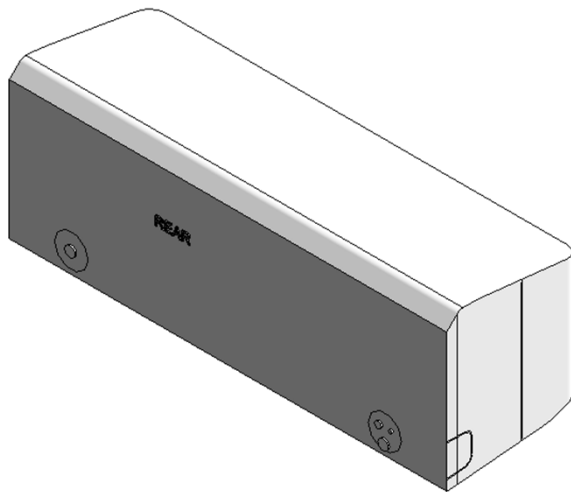
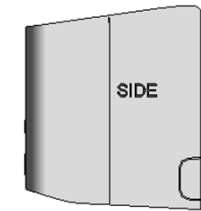
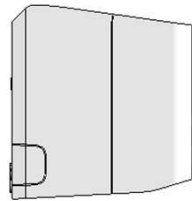




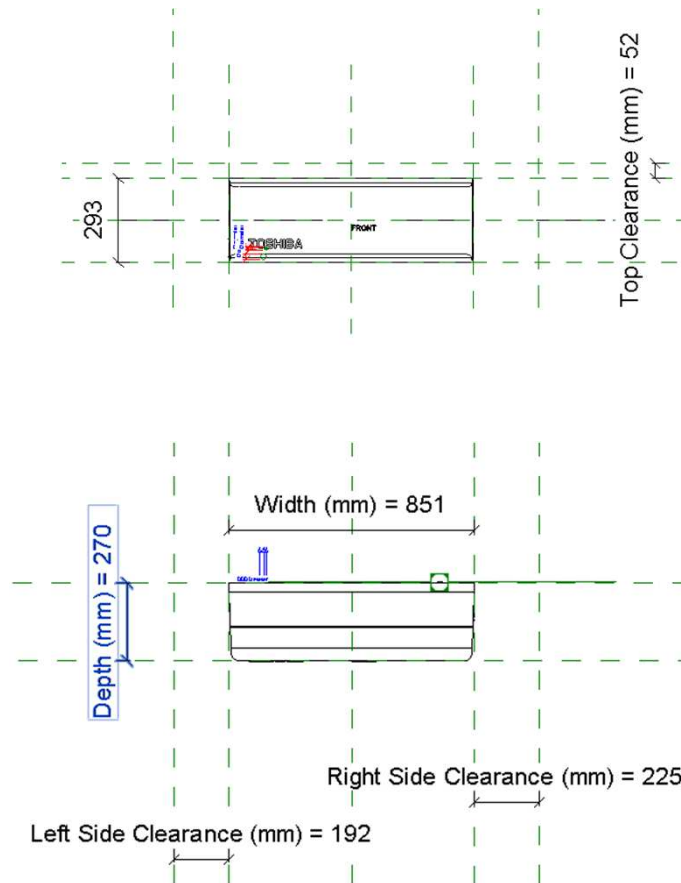
2. RAS_PKVPG_10-16

23-05-2019

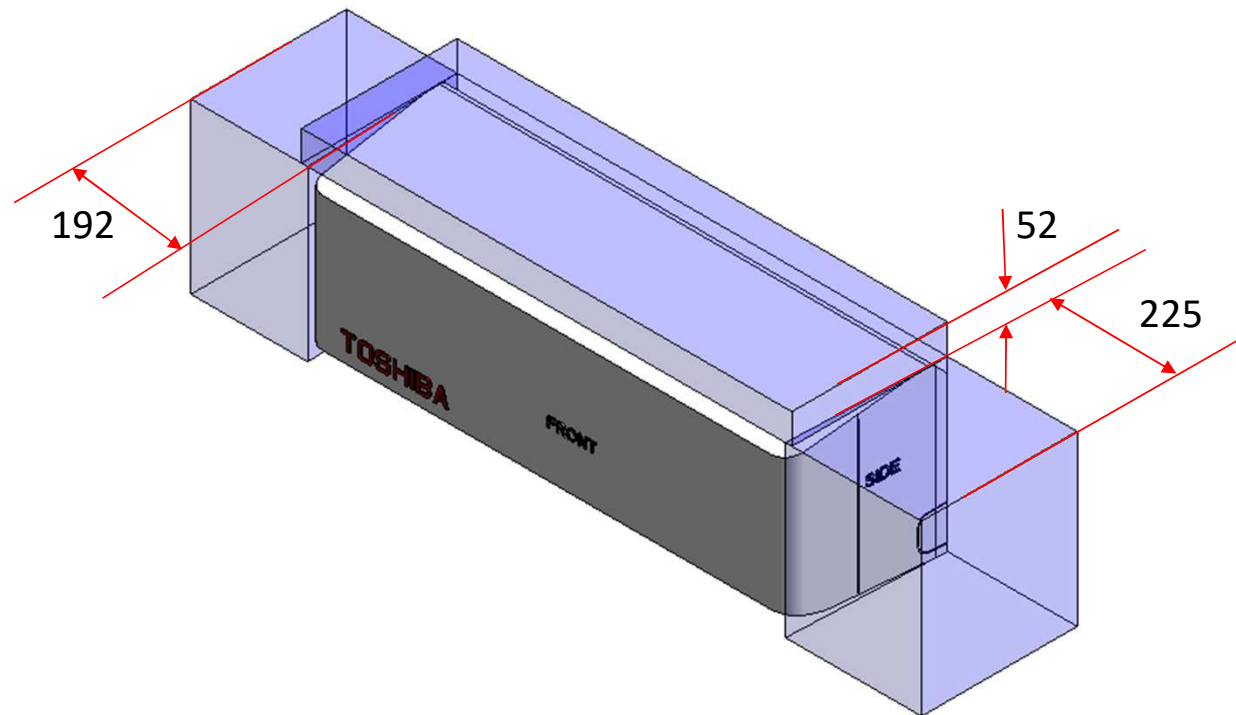
RAS_PKVPG_10-16



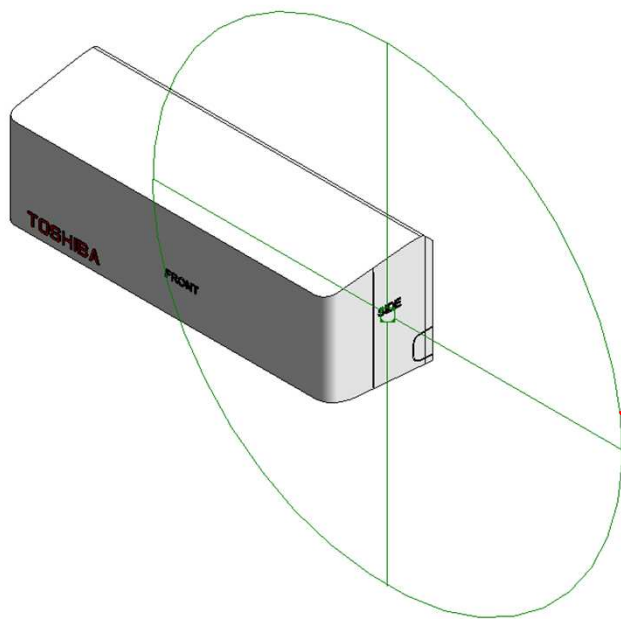
RAS_PKVPG_10-16



RAS_PKVPG_10-16 Service Area



Electrical Connector



Properties

R

Connector Element (1) Edit Type

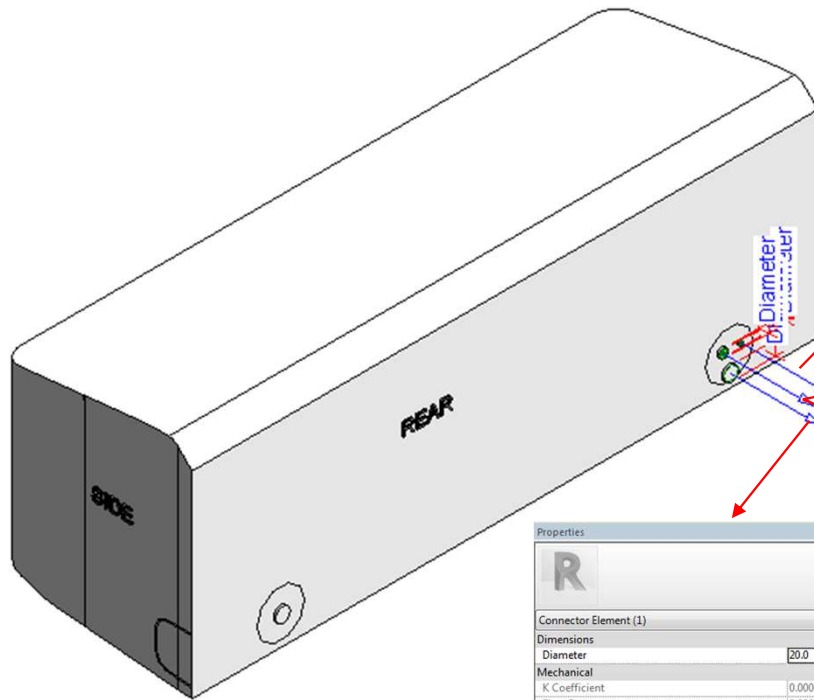
Electrical - Loads

System Type	Power - Unbalanced
Number of Poles	1
Power Factor State	Lagging
Load Classification	Other
Load Sub-Classification Motor	<input type="checkbox"/>
Voltage	0.00 V
Apparent Load Phase 1	0.00 VA
Apparent Load Phase 2	0.00 VA
Apparent Load Phase 3	0.00 VA
Power Factor	1.000000

Identity Data

Utility	<input type="checkbox"/>
Connector Description	ELECTRICAL CONNECTION PORT

Pipe Connectors



Properties	
Connector Element (1) Edit Type	
Dimensions	
Diameter	6.4
Mechanical	
K Coefficient	0.000000
Flow Factor	0.000000
Flow Configuration	Calculated
Flow Direction	Bidirectional
Loss Method	Not Defined
Allow Slope Adjustments	<input type="checkbox"/>
System Classification	Hydronic Supply
Mechanical - Flow	
Flow	0.00 L/s
Pressure Drop	0.00 Pa
Identity Data	
Utility	<input type="checkbox"/>
Connector Description	HYDRONIC SUPPLY (LIQUID) CONNECTION PORT @ 6.4 mm

Properties	
Connector Element (1) Edit Type	
Dimensions	
Diameter	12.7
Mechanical	
K Coefficient	0.000000
Flow Factor	0.000000
Flow Configuration	Calculated
Flow Direction	Bidirectional
Loss Method	Not Defined
Allow Slope Adjustments	<input type="checkbox"/>
System Classification	Hydronic Return
Mechanical - Flow	
Flow	0.00 L/s
Pressure Drop	0.00 Pa
Identity Data	
Utility	<input type="checkbox"/>
Connector Description	HYDRONIC RETURN (GAS) CONNECTION PORT @ 12.7 mm

Properties	
Connector Element (1) Edit Type	
Dimensions	
Diameter	20.0
Mechanical	
K Coefficient	0.000000
Flow Factor	0.000000
Flow Configuration	Calculated
Flow Direction	Bidirectional
Loss Method	Not Defined
Allow Slope Adjustments	<input type="checkbox"/>
System Classification	Vent
Mechanical - Flow	
Flow	0.00 L/s
Pressure Drop	0.00 Pa
Identity Data	
Utility	<input type="checkbox"/>
Connector Description	DRAIN PORT

Properties	
Connector Element (1) Edit Type	
Dimensions	
Diameter	9.5
Mechanical	
K Coefficient	0.000000
Flow Factor	0.000000
Flow Configuration	Calculated
Flow Direction	Bidirectional
Loss Method	Not Defined
Allow Slope Adjustments	<input type="checkbox"/>
System Classification	Hydronic Return
Mechanical - Flow	
Flow	0.00 L/s
Pressure Drop	0.00 Pa
Identity Data	
Utility	<input type="checkbox"/>
Connector Description	HYDRONIC RETURN (GAS) CONNECTION PORT @ 9.5 mm

RAS-10PKVPG-E

Family Types		
Type name:	RAS-10PKVPG-E	
Search parameters		
Parameter	Value	Formula
Materials and Finishes		
Red	Colour RGB-250 000 000	=
White	Colour - RGB 255 255 255	=
Electrical		
MOCP (A)	15	=
MCA (A)	-	=
Running current-Cooling (A)	0.24 - 0.22	=
Power consumption-Cooling (Kw)	25	=
Running current-Heating (A)	0.28 - 0.26	=
Power consumption-Heating (Kw)	30	=
Frequency (Hz)	50Hz	=
Voltage (V)	220-240V	=
Starting current (A)	-	=
Dimensions		
Height (mm)	293.0	=
Depth (mm)	270.0	=
Width (mm)	851.0	=
Weight (Kg)	14.0	=
Piping diameter Gas (mm)	9.5	=
Piping diameter Liquid (mm)	6.4	=
Drain pipe	16.0	=
Duct diameter (mm)	-	=
Mechanical - Flow		
Static pressure	-	=
Sound pressure - Cooling/Heating (dB) High	43 / 44	=
Sound pressure dB(A)-Cooling/Heating-Mid	39 / 39	=
Sound pressure - Cooling/Heating (dB) Mid	33 / 33	=
Sound pressure dB(A)-Cooling/Heating-Low	28 / 28	=
Sound pressure - Cooling/Heating (dB) Low	24 / 24	=
Airflow m3/h	684 / 726	=
Air filter	Plasma ion charger filtration	=
Mechanical - Loads		
Rated Capacity kW -Cooling/Heating	2.5 / 3.2	=
Rated Power Consumption kW-Cooling/Heat	0.45 / 0.60	=
Rated efficiency-EER / COP	5.56 / 5.33	=
Energy Analysis		
Energy class-Cooling/Heating	A+++ / A+++	=
Seasonal Efficiency-SEER / SCOP	10.6 / 5.20	=
Pdesign-Cooling/Heating	2.5 / 3.0 (Tbiv= -7degC)	=

Visibility		
Service Area (default)	<input type="checkbox"/>	=
Top Clearance (mm) (default)	52.0	=
Left Side Clearance (mm) (default)	192.0	=
Right Side Clearance (mm) (default)	225.0	=
Other		
Refrigerant information	R32	=
Compressor detail (Type)	-	=
Compressor detail (Motor output kW)	-	=
Operating range degC-Cooling	21 - 32	=
Operating range degC-Heating	0 - 28	=
Identity Data		
Article Description	R32 DSK 9	=
Article Type	RAS-10PKVPG-E	=
Base Family Version		=
CB-NL Class		=
Content Supplier URL	www.hcltech.com	=
Copyright	©Toshiba / HCL	"©Toshiba / HCL"
Custom	<input checked="" type="checkbox"/>	=
EMCS	4	"4"
ETIM Article Class	EC001213	"EC001213"
Family Version		=
GLN		=
GTIN		=
Internal Art. No.		=
MEPcontent Class	HEATPUMP	"HEATPUMP"
Manufacturer Art. No.	RAS-10PKVPG-E	=
Manufacturer URL	https://www.toshiba-carrier.co.jp/global/	=
Product Line	TCTC	"TCTC"
Revit Version	2017	"2017"
Stabu Code		=
Type Image		=
Keynote		=
Model	RAS-10PKVPG-E	=
Manufacturer	"Toshiba"	=
Type Comments		=
URL	https://www.toshiba-carrier.co.jp/global/	=
Description	R32 DSK 9	=
Assembly Code		=
Cost		=
Watermarked By		=
Wholesale		=

RAS-13PKVPG-E

Family Types		
Type name:	RAS-13PKVPG-E	
Search parameters		
Parameter	Value	Formula
Materials and Finishes		
Red	Colour RGB-250 000 000	=
White	Colour - RGB 255 255 255	=
Electrical		
MOCp (A)	15	=
MCA (A)	-	=
Running current-Cooling (A)	0.24 - 0.22	=
Power consumption-Cooling (Kw)	25	=
Running current-Heating (A)	0.28 - 0.26	=
Power consumption-Heating (Kw)	30	=
Frequency (Hz)	50Hz	=
Voltage (V)	220-240V	=
Starting current (A)	-	=
Dimensions		
Height (mm)	293.0	=
Depth (mm)	270.0	=
Width (mm)	851.0	=
Weight (Kg)	14.0	=
Piping diameter Gas (mm)	9.5	=
Piping diameter Liquid (mm)	6.4	=
Drain pipe	16.0	=
Duct diameter (mm)	-	=
Mechanical - Flow		
Static pressure	-	=
Sound pressure - Cooling/Heating (dB) High	44 / 45	=
Sound pressure dB(A)-Cooling/Heating-Mid	39 / 39	=
Sound pressure - Cooling/Heating (dB) Mid	34 / 34	=
Sound pressure dB(A)-Cooling/Heating-Low	29 / 29	=
Sound pressure -Cooling/Heating (dB) Low	25 / 25	=
Airflow m3/h	714 / 726	=
Air filter	Long life filter	=
Mechanical - Loads		
Rated Capacity kW -Cooling/Heating	3.5 / 4.0	=
Rated Power Consumption kW-Cooling/Heat	0.75 / 0.80	=
Rated efficiency-EER / COP	4.67 / 5.00	=
Energy Analysis		
Energy class-Cooling/Heating	A+++ / A+++	=
Seasonal Efficiency-SEER / SCOP	9.50 / 5.10	=
Pdesign-Cooling/Heating	3.5 / 3.6 (Tbiv= -7degC)	=

Visibility		
Service Area (default)	<input type="checkbox"/>	=
Top Clearance (mm) (default)	52.0	=
Left Side Clearance (mm) (default)	192.0	=
Right Side Clearance (mm) (default)	225.0	=
Other		
Refrigerant information	R32	=
Compressor detail (Type)	-	=
Compressor detail (Motor output kW)	-	=
Operating range degC-Cooling	21 - 32	=
Operating range degC-Heating	0 - 28	=
Identity Data		
Article Description	R32 DSK 9	=
Article Type	RAS-13PKVPG-E	=
Base Family Version		=
CB-NL Class		=
Content Supplier URL	www.hcltech.com	=
Copyright	©Toshiba / HCL	= "©Toshiba / HCL"
Custom	<input checked="" type="checkbox"/>	=
EMCS	4	= "4"
ETIM Article Class	EC001213	= "EC001213"
Family Version		=
GLN		=
GTIN		=
Internal Art. No.		=
MEPcontent Class	HEATPUMP	= "HEATPUMP"
Manufacturer Art. No.	RAS-13PKVPG-E	=
Manufacturer URL	https://www.toshiba-carrier.co.jp/global/	=
Product Line	TCTC	= "TCTC"
Revit Version	2017	= "2017"
Stabu Code		=
Type Image		=
Keynote		=
Model	RAS-13PKVPG-E	=
Manufacturer	"Toshiba"	=
Type Comments		=
URL	https://www.toshiba-carrier.co.jp/global/	=
Description	R32 DSK 9	=
Assembly Code		=
Cost		=
Watermarked By		=
Wholesaler		=

RAS-16PKVPG-E

Family Types		
Type name:	RAS-16PKVPG-E	
Search parameters		
Parameter	Value	Formula
Materials and Finishes		
Red	Colour RGB-250 000 000	=
White	Colour - RGB 255 255 255	=
Electrical		
MOCp (A)	15	=
MCA (A)	-	=
Running current-Cooling (A)	0.24 - 0.22	=
Power consumption-Cooling (Kw)	25	=
Running current-Heating (A)	0.28 - 0.26	=
Power consumption-Heating (Kw)	30	=
Frequency (Hz)	50Hz	=
Voltage (V)	220-240V	=
Starting current (A)	6.44 - 5.89	=
Dimensions		
Height (mm)	293.0	=
Depth (mm)	270.0	=
Width (mm)	851.0	=
Weight (Kg)	14.0	=
Piping diameter Gas (mm)	12.7	=
Piping diameter Liquid (mm)	6.4	=
Drain pipe	16.0	=
Duct diameter (mm)	-	=
Mechanical - Flow		
Static pressure	-	=
Sound pressure - Cooling/Heating (dB) High	45 / 46	=
Sound pressure dB(A)-Cooling/Heating-Mid	40 / 40	=
Sound pressure - Cooling/Heating (dB) Mid	35 / 35	=
Sound pressure dB(A)-Cooling/Heating-Low	30 / 30	=
Sound pressure -Cooling/Heating (dB) Low	26 / 26	=
Airflow m3/h	732 / 744	=
Air filter	Long life filter	=
Mechanical - Loads		
Rated Capacity kW -Cooling/Heating	4.5 / 5.5	=
Rated Power Consumption kW-Cooling/Heat	1.08 / 1.37	=
Rated efficiency-EER / COP	4.17 / 4.01	=
Energy Analysis		
Energy class-Cooling/Heating	A+++ / A+++	=
Seasonal Efficiency-SEER / SCOP	8.50 / 4.60	=
Pdesigh-Cooling/Heating	4.5 / 4.5 (Tbiv= -7degC)	=

Visibility		
Service Area (default)	<input type="checkbox"/>	=
Top Clearance (mm) (default)	52.0	=
Left Side Clearance (mm) (default)	192.0	=
Right Side Clearance (mm) (default)	225.0	=
Other		
Refrigerant information	R32	=
Compressor detail (Type)	-	=
Compressor detail (Motor output kW)	-	=
Operating range degC-Cooling	21 - 32	=
Operating range degC-Heating	0 - 28	=
Identity Data		
Article Description	R32 DSK 9	=
Article Type	RAS-16PKVPG-E	=
Base Family Version		=
CB-NL Class		=
Content Supplier URL	www.hcltech.com	=
Copyright	©Toshiba / HCL	= "©Toshiba / HCL"
Custom	<input checked="" type="checkbox"/>	=
EMCS	4	= "4"
ETIM Article Class	EC001213	= "EC001213"
Family Version		=
GLN		=
GTIN		=
Internal Art. No.		=
MEPcontent Class	HEATPUMP	= "HEATPUMP"
Manufacturer Art. No.	RAS-16PKVPG-E	=
Manufacturer URL	https://www.toshiba-carrier.co.jp/global/	=
Product Line	TCTC	= "TCTC"
Revit Version	2017	= "2017"
Stabu Code		=
Type Image		=
Keynote		=
Model	RAS-16PKVPG-E	=
Manufacturer	"Toshiba"	=
Type Comments		=
URL	https://www.toshiba-carrier.co.jp/global/	=
Description	R32 DSK 9	=
Assembly Code		=
Cost		=
Watermarked By		=
Wholesaler		=

RAS-M10PKVPG-E

Family Types		
Type name:	RAS-M10PKVPG-E	
Search parameters		
Parameter	Value	Formula
Materials and Finishes		
Red	Colour RGB-250 000 000	=
White	Colour - RGB 255 255 255	=
Electrical		
MOCp (A)	10	=
MCA (A)	-	=
Running current-Cooling (A)	0.24 - 0.22	=
Power consumption-Cooling (Kw)	25	=
Running current-Heating (A)	0.28 - 0.26	=
Power consumption-Heating (Kw)	30	=
Frequency (Hz)	50Hz	=
Voltage (V)	220-240V	=
Starting current (A)	-	=
Dimensions		
Height (mm)	293.0	=
Depth (mm)	270.0	=
Width (mm)	851.0	=
Weight (Kg)	14.0	=
Piping diameter Gas (mm)	9.5	=
Piping diameter Liquid (mm)	6.4	=
Drain pipe	16.0	=
Duct diameter (mm)	-	=
Mechanical - Flow		
Static pressure	-	=
Sound pressure - Cooling/Heating (dB) High	42 / 44	=
Sound pressure dB(A)-Cooling/Heating-Mid+	-	=
Sound pressure - Cooling/Heating (dB) Mid	-	=
Sound pressure dB(A)-Cooling/Heating-Low+	-	=
Sound pressure -Cooling/Heating (dB) Low	-	=
Airflow m3/h	672 / 726	=
Air filter	Plasma air purifier	=
Mechanical - Loads		
Rated Capacity kW -Cooling/Heating	-	=
Rated Power Consumption kW-Cooling/Heating	-	=
Rated efficiency-EER / COP	-	=
Energy Analysis		
Energy class-Cooling/Heating	-	=
Seasonal Efficiency-SEER / SCOP	-	=
Pdesigh-Cooling/Heating	-	=

Visibility		
Service Area (default)	<input type="checkbox"/>	=
Top Clearance (mm) (default)	52.0	=
Left Side Clearance (mm) (default)	192.0	=
Right Side Clearance (mm) (default)	225.0	=
Other		
Refrigerant information	R32	=
Compressor detail (Type)	-	=
Compressor detail (Motor output kW)	-	=
Operating range degC-Cooling	21 - 32	=
Operating range degC-Heating	0 - 28	=
Identity Data		
Article Description	Hi-wall - Daiseikai 9	=
Article Type	RAS-M10PKVPG-E	=
Base Family Version		=
CB-NL Class		=
Content Supplier URL	www.hdtech.com	=
Copyright	©Toshiba / HCL	= "©Toshiba / HCL"
Custom	<input checked="" type="checkbox"/>	=
EMCS	4	= "4"
ETIM Article Class	EC001213	= "EC001213"
Family Version		=
GLN		=
GTIN		=
Internal Art. No.		=
MEPcontent Class	HEATPUMP	= "HEATPUMP"
Manufacturer Art. No.	RAS-M10PKVPG-E	=
Manufacturer URL	https://www.toshiba-carrier.co.jp/global/	=
Product Line	TCTC	= "TCTC"
Revit Version	2017	= "2017"
Stabu Code		=
Type Image		=
Keynote		=
Model	RAS-M10PKVPG-E	=
Manufacturer	Toshiba	=
Type Comments		=
URL	https://www.toshiba-carrier.co.jp/global/	=
Description	Hi-wall - Daiseikai 9	=
Assembly Code		=
Cost		=
Watermarked By		=
Wholesaler		=
Wholesaler Art. No.		=

RAS-M13PKVPG-E

Family Types		
Type name:	RAS-M13PKVPG-E	
Search parameters		
Parameter	Value	Formula
Materials and Finishes		
Red	Colour RGB-250 000 000	=
White	Colour - RGB 255 255 255	=
Electrical		
MOCP (A)	10	=
MCA (A)	-	=
Running current-Cooling (A)	0.24 - 0.22	=
Power consumption-Cooling (Kw)	25	=
Running current-Heating (A)	0.28 - 0.26	=
Power consumption-Heating (Kw)	30	=
Frequency (Hz)	50Hz	=
Voltage (V)	220-240V	=
Starting current (A)	-	=
Dimensions		
Height (mm)	293.0	=
Depth (mm)	270.0	=
Width (mm)	851.0	=
Weight (Kg)	14.0	=
Piping diameter Gas (mm)	9.5	=
Piping diameter Liquid (mm)	6.4	=
Drain pipe	16.0	=
Duct diameter (mm)	-	=
Mechanical - Flow		
Static pressure	-	=
Sound pressure - Cooling/Heating (dB) High	43 / 44	=
Sound pressure dB(A)-Cooling/Heating-Mid+	-	=
Sound pressure - Cooling/Heating (dB) Mid	-	=
Sound pressure dB(A)-Cooling/Heating-Low+	-	=
Sound pressure -Cooling/Heating (dB) Low	-	=
Airflow m3/h	672 / 726	=
Air filter	Plasma air purifier	=
Mechanical - Loads		
Rated Capacity kW -Cooling/Heating	-	=
Rated Power Consumption kW-Cooling/Heating	-	=
Rated efficiency-EER / COP	-	=
Energy Analysis		
Energy class-Cooling/Heating	-	=
Seasonal Efficiency-SEER / SCOP	-	=
Pdesign-Cooling/Heating	-	=

Visibility		
Service Area (default)	<input type="checkbox"/>	=
Top Clearance (mm) (default)	52.0	=
Left Side Clearance (mm) (default)	192.0	=
Right Side Clearance (mm) (default)	225.0	=
Other		
Refrigerant information	R32	=
Compressor detail (Type)	-	=
Compressor detail (Motor output kW)	-	=
Operating range degC-Cooling	21 - 32	=
Operating range degC-Heating	0 - 28	=
Identity Data		
Article Description	Hi-wall - Daiseikai 9	=
Article Type	RAS-M13PKVPG-E	=
Base Family Version		=
CB-NL Class		=
Content Supplier URL	www.hcltech.com	=
Copyright	©Toshiba / HCL	= "@Toshiba / HCL"
Custom	<input checked="" type="checkbox"/>	=
EMCS	4	= "4"
ETIM Article Class	EC001213	= "EC001213"
Family Version		=
GLN		=
GTIN		=
Internal Art. No.		=
MEPcontent Class	HEATPUMP	= "HEATPUMP"
Manufacturer Art. No.	RAS-M13PKVPG-E	=
Manufacturer URL	https://www.toshiba-carrier.co.jp/global/	=
Product Line	TCTC	= "TCTC"
Revit Version	2017	= "2017"
Stabu Code		=
Type Image		=
Keynote		=
Model	RAS-M13PKVPG-E	=
Manufacturer	"Toshiba"	=
Type Comments		=
URL	https://www.toshiba-carrier.co.jp/global/	=
Description	Hi-wall - Daiseikai 9	=
Assembly Code		=
Cost		=
Watermarked By		=
Wholesaler		=
Wholesaler Art. No.		=

RAS-M16PKVPG-E

Family Types		
Type name:	RAS-M16PKVPG-E	
Search parameters		
Parameter	Value	Formula
Materials and Finishes		
Red	Colour RGB-250 000 000	=
White	Colour - RGB 255 255 255	=
Electrical		
MOCP (A)	-	=
MCA (A)	-	=
Running current-Cooling (A)	0.24 - 0.22	=
Power consumption-Cooling (Kw)	25	=
Running current-Heating (A)	0.28 - 0.26	=
Power consumption-Heating (Kw)	30	=
Frequency (Hz)	50Hz	=
Voltage (V)	220-240V	=
Starting current (A)	-	=
Dimensions		
Height (mm)	293.0	=
Depth (mm)	270.0	=
Width (mm)	851.0	=
Weight (Kg)	14.0	=
Piping diameter Gas (mm)	9.5	=
Piping diameter Liquid (mm)	6.4	=
Drain pipe	16.0	=
Duct diameter (mm)	-	=
Mechanical - Flow		
Static pressure	-	=
Sound pressure - Cooling/Heating (dB) High	44 / 45	=
Sound pressure dB(A)-Cooling/Heating-Mid-	-	=
Sound pressure - Cooling/Heating (dB) Mid	-	=
Sound pressure dB(A)-Cooling/Heating-Low-	-	=
Sound pressure -Cooling/Heating (dB) Low	-	=
Airflow m3/h	672 / 744	=
Air filter	Plamsa air purifier	=
Mechanical - Loads		
Rated Capacity kW -Cooling/Heating	-	=
Rated Power Consumption kW-Cooling/Heati	-	=
Rated efficiency-EER / COP	-	=
Energy Analysis		
Energy class-Cooling/Heating	-	=
Seasonal Efficiency-SEER / SCOP	-	=
Pdesigh-Cooling/Heating	-	=

Visibility		
Service Area (default)	<input type="checkbox"/>	=
Top Clearance (mm) (default)	52.0	=
Left Side Clearance (mm) (default)	192.0	=
Right Side Clearance (mm) (default)	225.0	=
Other		
Refrigerant information	R32	=
Compressor detail (Type)	-	=
Compressor detail (Motor output kW)	-	=
Operating range degC-Cooling	21 - 32	=
Operating range degC-Heating	0 - 28	=
Identity Data		
Article Description	Hi-wall - Daiseikai 9	=
Article Type	RAS-M16PKVPG-E	=
Base Family Version		=
CB-NL Class		=
Content Supplier URL	www.hcitech.com	=
Copyright	©Toshiba / HCL	= "©Toshiba / HCL"
Custom	<input checked="" type="checkbox"/>	=
EMCS	4	= "4"
ETIM Article Class	EC001213	= "EC001213"
Family Version		=
GLN		=
GTIN		=
Internal Art. No.		=
MEPcontent Class	HEATPUMP	= "HEATPUMP"
Manufacturer Art. No.	RAS-M16PKVPG-E	=
Manufacturer URL	https://www.toshiba-carrier.co.jp/global/	=
Product Line	TCTC	= "TCTC"
Revit Version	2017	= "2017"
Stabu Code		=
Type Image		=
Keynote		=
Model	RAS-M16PKVPG-E	=
Manufacturer	"Toshiba"	=
Type Comments		=
URL	https://www.toshiba-carrier.co.jp/global/	=
Description	Hi-wall - Daiseikai 9	=
Assembly Code		=
Cost		=
Watermarked By		=
Wholesaler		=
Wholesaler Art. No.		=



Thank You