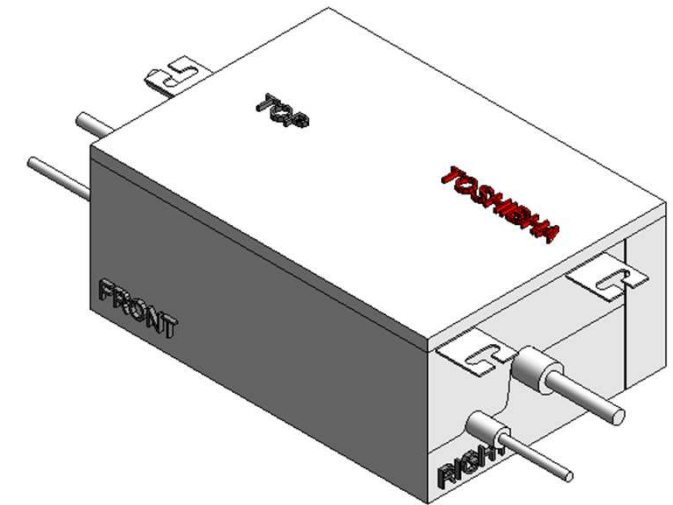
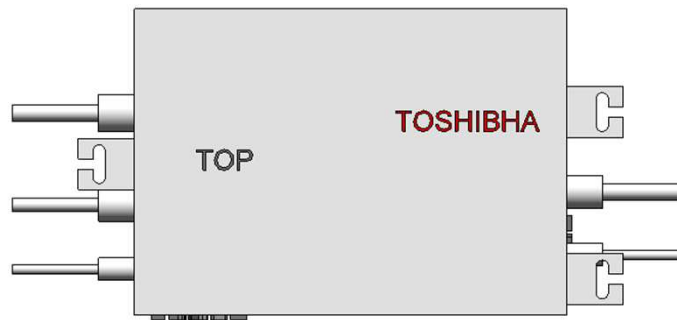
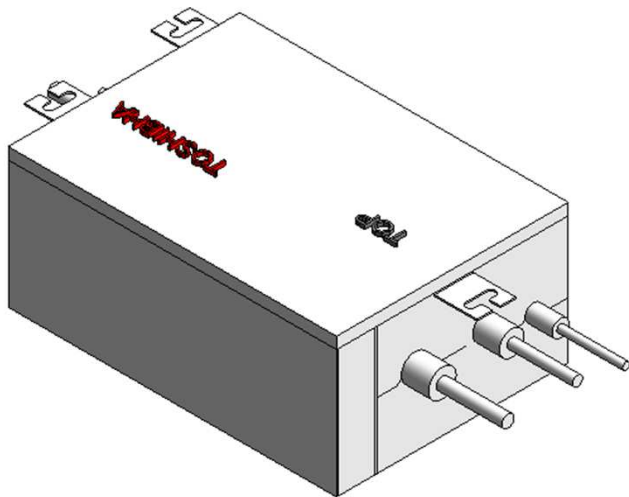
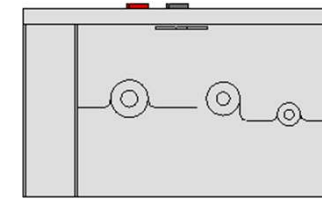
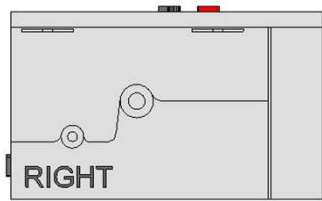


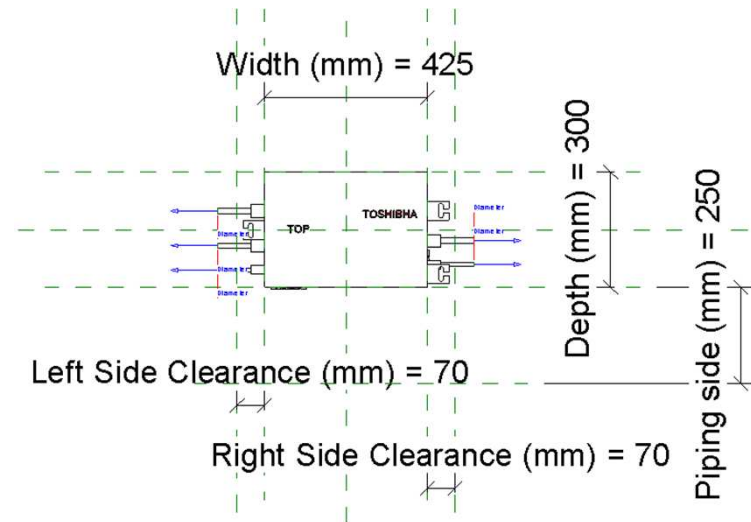
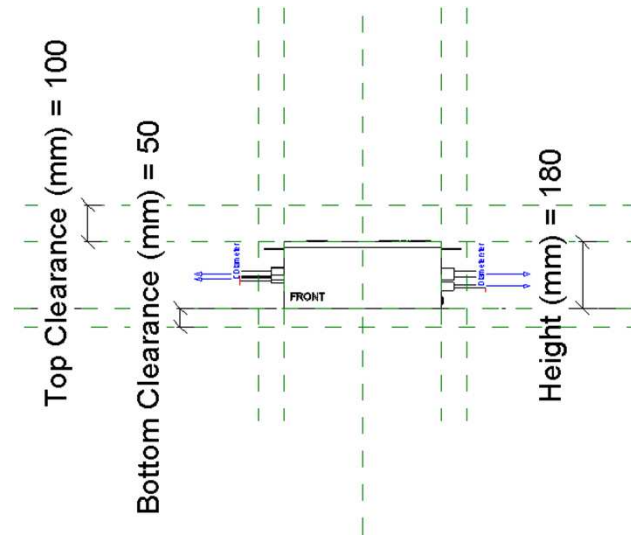
89.VRF_Y_FE_112-180

04-06-2019

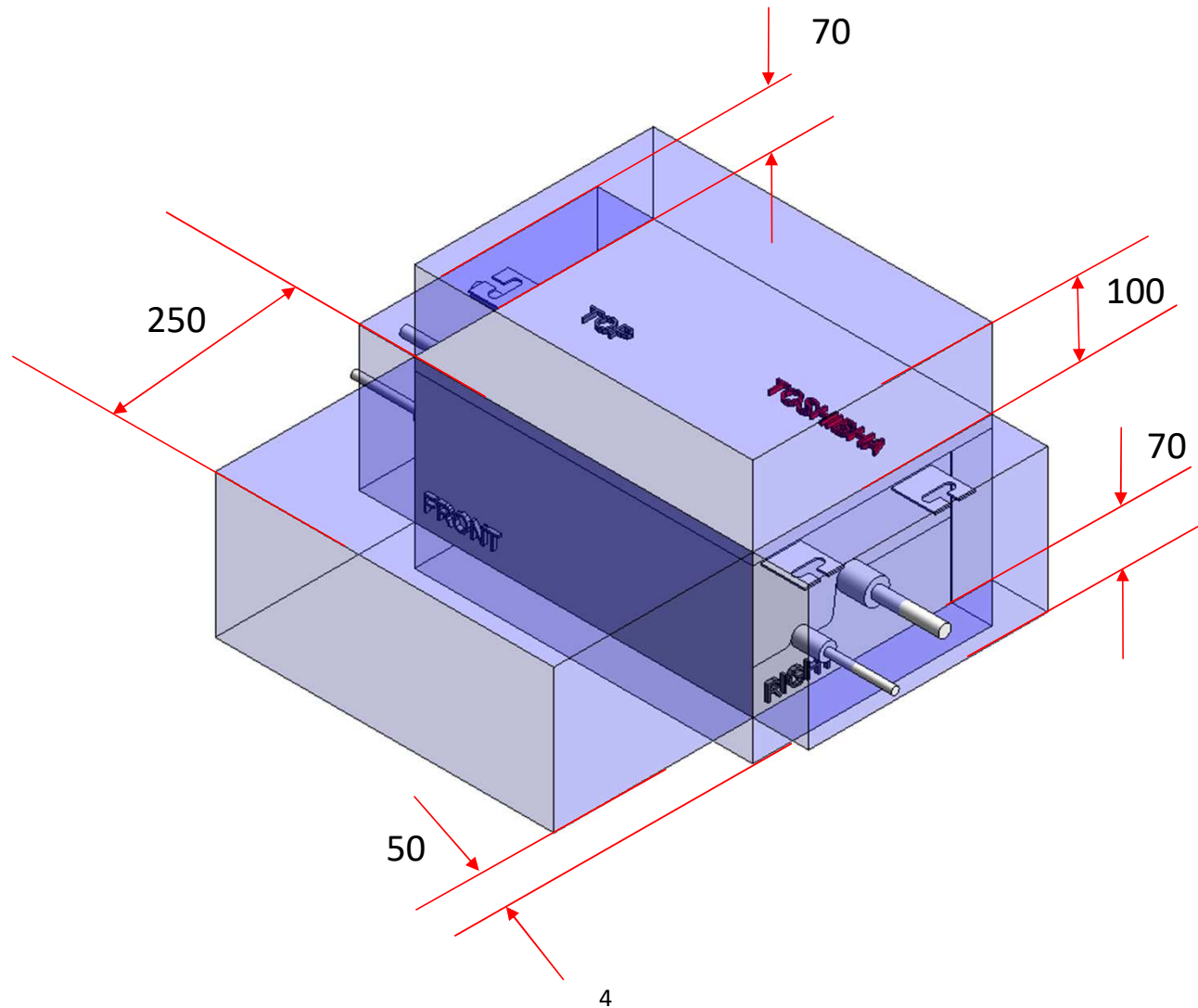
VRF_Y_FE_112-180



VRF_Y_FE_112-180



VRF_Y_FE_112-180 Service Area



Pipe Connectors

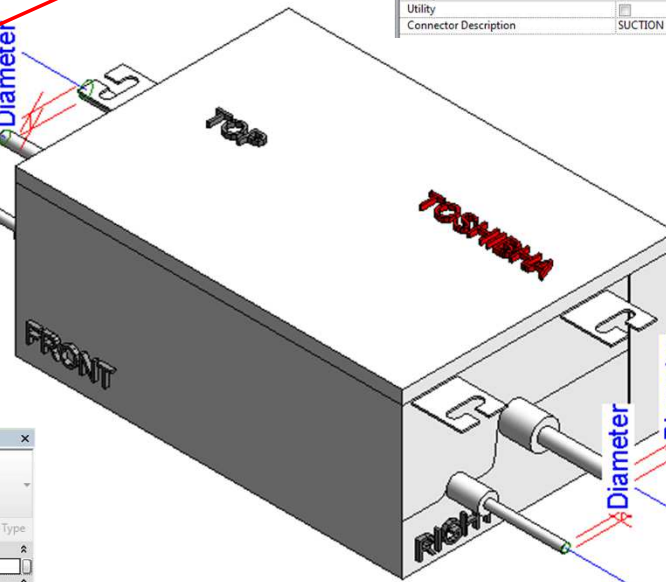
Properties	
R	
Connector Element (1) Edit Type	
Dimensions	
Diameter	12.7
Mechanical	
K Coefficient	0.000000
Flow Factor	0.000000
Flow Configuration	Calculated
Flow Direction	Bidirectional
Loss Method	Not Defined
Allow Slope Adjustments	<input type="checkbox"/>
System Classification	Hydronic Return
Mechanical - Flow	
Flow	0.00 L/s
Pressure Drop	0.00 Pa
Identity Data	
Utility	<input type="checkbox"/>
Connector Description	DISCHARGE GAS PIPE @ 15.9 mm

Properties	
R	
Connector Element (1) Edit Type	
Dimensions	
Diameter	15.9
Mechanical	
K Coefficient	0.000000
Flow Factor	0.000000
Flow Configuration	Calculated
Flow Direction	Bidirectional
Loss Method	Not Defined
Allow Slope Adjustments	<input type="checkbox"/>
System Classification	Hydronic Supply
Mechanical - Flow	
Flow	0.00 L/s
Pressure Drop	0.00 Pa
Identity Data	
Utility	<input type="checkbox"/>
Connector Description	SUCTION GAS PIPE @ 15.9 mm

Properties	
R	
Connector Element (1) Edit Type	
Dimensions	
Diameter	15.9
Mechanical	
K Coefficient	0.000000
Flow Factor	0.000000
Flow Configuration	Calculated
Flow Direction	Bidirectional
Loss Method	Not Defined
Allow Slope Adjustments	<input type="checkbox"/>
System Classification	Global
Mechanical - Flow	
Flow	0.00 L/s
Pressure Drop	0.00 Pa
Identity Data	
Utility	<input type="checkbox"/>
Connector Description	GAS PIPE @ 15.9 mm

Properties	
R	
Connector Element (1) Edit Type	
Dimensions	
Diameter	9.5
Mechanical	
K Coefficient	0.000000
Flow Factor	0.000000
Flow Configuration	Calculated
Flow Direction	Bidirectional
Loss Method	Not Defined
Allow Slope Adjustments	<input type="checkbox"/>
System Classification	Hydronic Return
Mechanical - Flow	
Flow	0.00 L/s
Pressure Drop	0.00 Pa
Identity Data	
Utility	<input type="checkbox"/>
Connector Description	HYDRONIC RETURN (GAS) PORT @ 9.5mm

Properties	
R	
Connector Element (1) Edit Type	
Dimensions	
Diameter	9.5
Mechanical	
K Coefficient	0.000000
Flow Factor	0.000000
Flow Configuration	Calculated
Flow Direction	Bidirectional
Loss Method	Not Defined
Allow Slope Adjustments	<input type="checkbox"/>
System Classification	Hydronic Return
Mechanical - Flow	
Flow	0.00 L/s
Pressure Drop	0.00 Pa
Identity Data	
Utility	<input type="checkbox"/>
Connector Description	LIQUID PIPE @ 9.5mm



RBM-Y1124FE

Family Types		
Type name:	RBM-Y1124FE	
Search parameters		
Parameter	Value	Formula
Materials and Finishes		
Red	Color RGB 255 000 000	=
White	Color RGB 255 255 255	=
Dimensions		
Height (mm)	180.0	=
Width (mm)	425.0	=
Depth (mm)	300.0	=
Outdoor unit - Suction Pipe Diameter (mm)	15.9	=
Outdoor unit - Discharge Pipe Diameter (mm)	12.7	=
Indoor unit - Gas (mm)	9.5 or 12.7 or 15.9	=
Indoor unit - Liquid (mm)	6.4 or 9.5	=
Visibility		
Service Area (default)	<input type="checkbox"/>	=
Top Clearance (mm) (default)	100.0	=
Bottom Clearance (mm) (default)	50.0	=
Piping side (mm) (default)	250.0	=
Left Side Clearance (mm) (default)	70.0	=
Right Side Clearance (mm) (default)	70.0	=
Other		
Connectable Indoor Unit Capacity	Below 11.2kW(4.0HP)	=

Identity Data		
Article Description	Flow Selector	=
Article Type	RBM-Y1124FE	=
Base Family Version		=
CB-NL Class		=
Content Supplier URL	www.hcltech.com	=
Copyright	©Toshiba / HCL	"©Toshiba / HCL"
EMCS	4	"4"
ETIM Article Class	EC001213	"EC001213"
Family Version		=
GLN		=
GTIN		=
Internal Art. No.		=
MEPcontent Class	HEATPUMP	"HEATPUMP"
Manufacturer	Toshiba	"Toshiba"
Manufacturer Art. No.	RBM-Y1124FE	=
Manufacturer URL	https://www.toshiba-carrier.co.jp/global/	=
Product Line		=
Revit Version	2017	"2017"
Stabu Code		=
Type Image		=
Keynote		=
Model	RBM-Y1124FE	=
Type Comments		=
URL	https://www.toshiba-carrier.co.jp/global/	=
Description	Flow Selector	=
Assembly Code		=
Cost		=
Watermarked By		=
Wholesaler		=
Wholesaler Art. No.		=

RBM-Y1804FE

Family Types		
Type name:	RBM-Y1804FE	
Search parameters		
Parameter	Value	Formula
Materials and Finishes		
Red	Color RGB 255 000 000	=
White	Color RGB 255 255 255	=
Dimensions		
Height (mm)	180.0	=
Width (mm)	425.0	=
Depth (mm)	300.0	=
Outdoor unit - Suction Pipe Diameter (mm)	15.9	=
Outdoor unit - Discharge Pipe Diameter (mm)	12.7	=
Indoor unit - Gas (mm)	12.7 or 15.9	=
Indoor unit - Liquid (mm)	9.5	=
Visibility		
Service Area (default)	<input type="checkbox"/>	=
Top Clearance (mm) (default)	100.0	=
Bottom Clearance (mm) (default)	50.0	=
Piping side (mm) (default)	250.0	=
Left Side Clearance (mm) (default)	70.0	=
Right Side Clearance (mm) (default)	70.0	=
Other		
Connectable Indoor Unit Capacity	Below 11.2kW(4.0HP)	=

Identity Data		
Article Description	Flow Selector	=
Article Type	RBM-Y1804FE	=
Base Family Version		=
CB-NL Class		=
Content Supplier URL	www.hcltech.com	=
Copyright	© Toshiba / HCL	"© Toshiba / HCL"
EMCS	4	"4"
ETIM Article Class	EC001213	"EC001213"
Family Version		=
GLN		=
GTIN		=
Internal Art. No.		=
MEPcontent Class	HEATPUMP	"HEATPUMP"
Manufacturer	Toshiba	"Toshiba"
Manufacturer Art. No.	RBM-Y1804FE	=
Manufacturer URL	https://www.toshiba-carrier.co.jp/global/	=
Product Line		=
Revit Version	2017	"2017"
Stabu Code		=
Type Image		=
Keynote		=
Model	RBM-Y1804FE	=
Type Comments		=
URL	https://www.toshiba-carrier.co.jp/global/	=
Description	Flow Selector	=
Assembly Code		=
Cost		=
Watermarked By		=
Wholesaler		=
Wholesaler Art. No.		=



Thank You