

TOSHIBA INSTALLATION MANUAL

Error output control board MODEL:TCB-PCIN3E

Safety Precautions

- Please read this section carefully before installation work to install the accessory parts in the prescribed manner. The precaution given here deal with serious safety issues. It is, therefore, of the utmost importance that they are observed in full.
- The meanings of safety-related symbol are as follows:

⚠ WARNING

This symbol is used to identify action which, if carried out in an incorrect ignoring this indication, could lead to serious personal injury or even death.

⚠ CAUTION

This symbol is used to identify action which, if carried out in an incorrect ignoring this indication, could lead to serious human injury or property damage.

- After installation work has been completed, perform a trial operation of the equipment in order to ensure that it is operating normally, and then hand over to the customer and ask to keep this Safety Precautions and Installation Instruction.

⚠ WARNING

Installation of accessory parts should be performed either by personnel from this dealer where it was purchased or by specialist installation technicians.

- Incorrect installation by unqualified personnel can result in electric shock, fire or abnormal operation.

Reassembling, repair, or modification of this accessory parts is strictly forbidden.

- Failure to follow these directions can result in inflammation, earth leakage or abnormal operation causing electric shock or injury.

Use the specified wires for wiring connect the terminals securely fix. To prevent external forces applied to the terminals from affecting the terminals.

Do not install a location where flammable gasses may be present.

- Fire may break out should flammable gas leak into the vicinity of the parts.

Repair of the accessory parts must also carried out by personnel from dealer where it was purchased.

- Incorrect installation by unqualified personnel can result in electric shock, fire or abnormal operation.

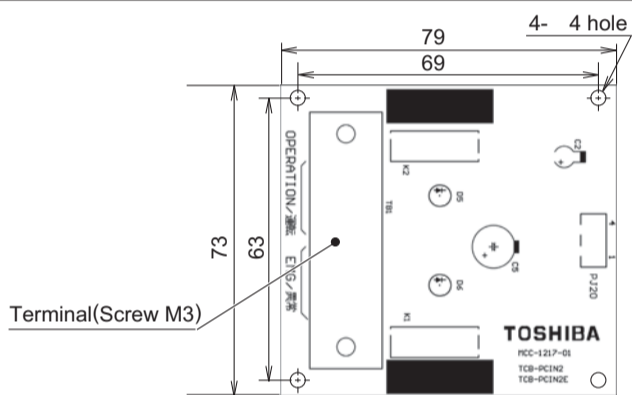
In case of installation of option PC Board, make sure that the means for disconnection must be incorporated in the fixed wiring in accordance with the wiring rules.

Feature Operation and Error monitoring is possible by using Error output control board "TCB-PCIN3E"

Dimension

Size(mm):H22 x L73 x W79

Weight(g): 57

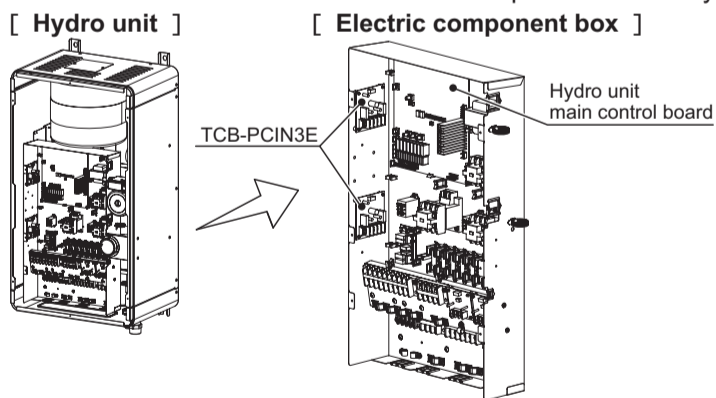


Accessory parts

No.	Parts name	Q'ty
1	Connection cable	1
2	Support to fix the board	4
3	Earth screw	2
4	Wire-clamp	1
5	Screw for cable-clamp	1
6	Banding band	2
7	Terminal label	1

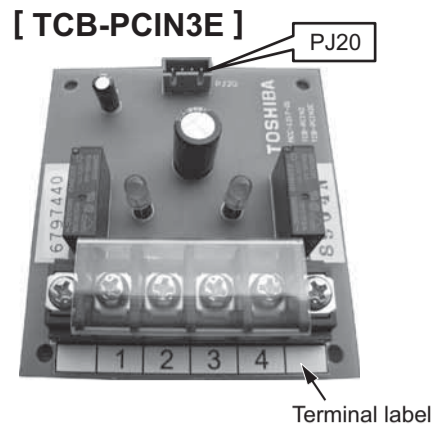
Placing position

Install this P.C. board to the left side of the electric component box on hydro unit.

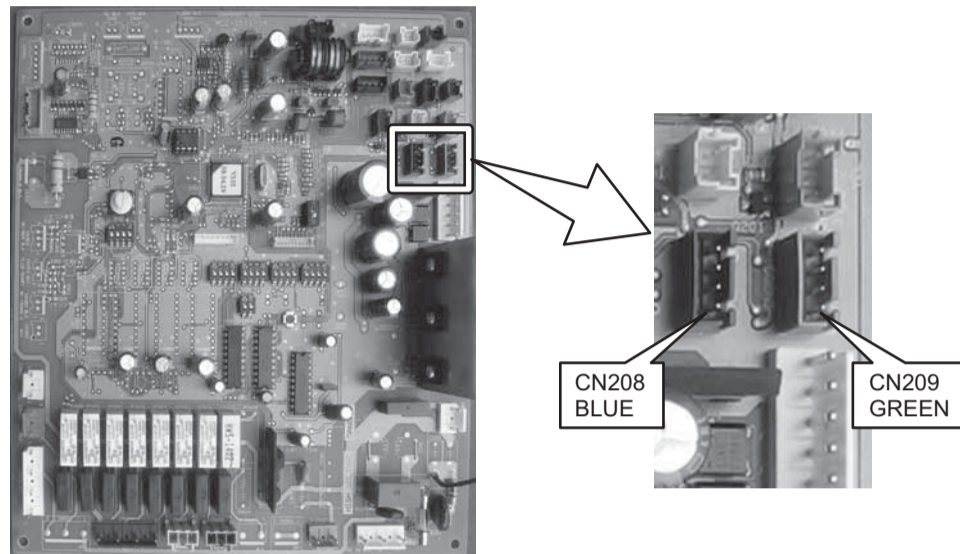


How to install

- (1) Be sure to turn off the power switch before installing.
- (2) Stick the attached terminal label on the board as shown in the figure on the right.
- (3) Place this P.C. board by using the support on the upper side of the electric component box. There are four installation holes to place the support on the upper side of the electric component box.
- (4) Connect the P.C. board (TCB-PCIN3E) PJ20 and hydro unit main control board CN208 and CN209 with connection cable.



[Hydro unit main control board]



CN208	Alarm and Boiler control output
CN209	Defrost and Compressor operation output

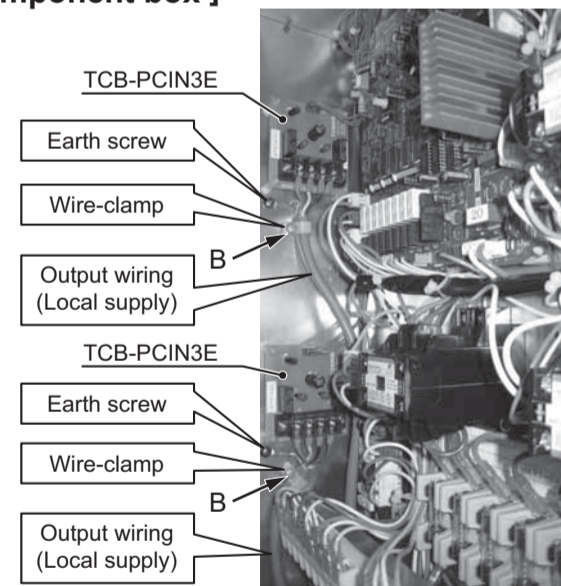
Wiring

	Length	Size	Type
Output wiring	Up to 200m	4-core, 0.75mm ² *	Shield wire

* In conformity with design 60245 IEC 57

- (1) Refer to the "Electric wiring diagram" when wiring.
- (2) Be sure to use the shield wire to prevent noise trouble, and perform the grounding at both sides of shield wires.
- (3) Fix the output wiring with the cable-clamp.
 - (3)-1. Fix the wire-clamp using the screw hole on the "B" position. (Do not use the attached banding band)

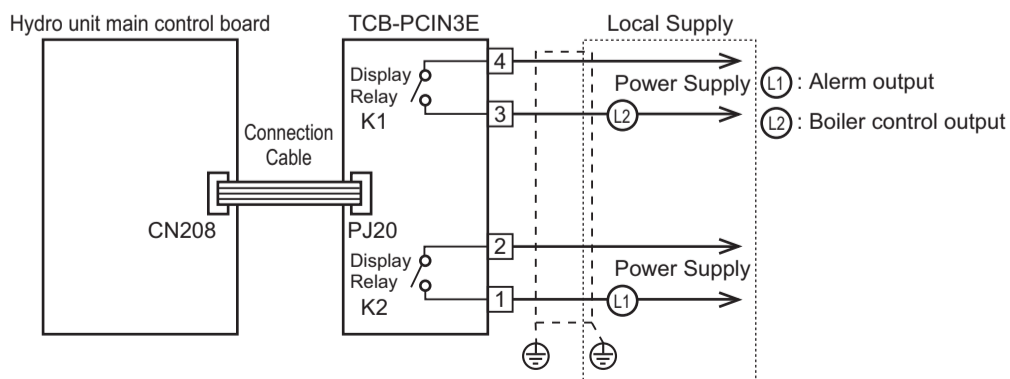
[Electric component box]



Function / Electric wiring diagram

Alarm output : Output enabled when the system is in alarm / fault condition.

Boiler control output : Output enabled when outdoor ambient temperature <-10°C



⚠ CAUTION

- Be sure to prepare a non-voltage point for each terminal.
- Display Relay capacity of "ALERM" and "BOILER", "COMPRESSOR OPERATION" and "DEFROST" Below AC230V 0.5A (COS =100%). when connecting load such as relay coil to "L1,L2" load, insert the noise surge absorber. Below DC24V 1A (Non-inductive load). when connecting load such as relay coil to "L1,L2" load, insert the bypass circuit.

Compressor operation output : Display relay is ON with outdoor compressor operation.

Defrost output : Display relay is ON when the system in defrost.

