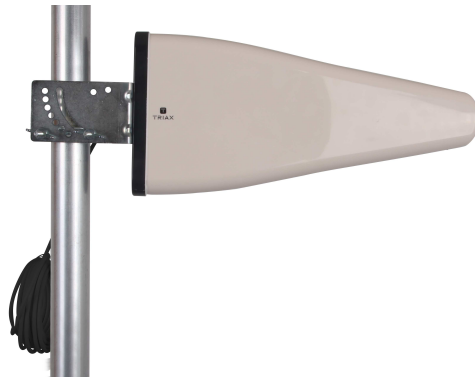


## D5A 11B - Directional 5G Antenna

Art. Number 109600



Directional antenna for 4G/5G signal reception.

### Future-proof connectivity, wherever you are

Work, rest or play online reliably and quickly, wherever you're staying - TRIAX 5G antennas boost mobile broadband reception in places fibre doesn't reach.

Simply connect to your choice of mobile broadband router to receive the maximum attainable mobile network speed at each location. The 11 dB gain ensures outstanding signal quality.

The antennas are ready for the advancing 5G roll-out across Scandinavia, bringing speeds up to 100x faster than 4G. They are fully compatible with all mobile signals: use the best possible 4G LTE speeds now, with no need for future upgrades when 5G arrives.

For the ultimate in speed and reliability, our antennas are MIMO compatible. We recommend installing a pair of directional antennas 70 cm apart and at 45° opposing angles.

The antenna is delivered with 7m black cable with connector, which is ready for mounting directly on the router.

## Technical Specifications

### ORDER INFORMATION

EAN Number 5702661096006

### CHARACTERISTICS

Antenna type	directional
Antenna use	outdoor
Polarization	vertical or horizontal
MIMO	Yes by the use of 2 antennas

### FREQUENCY RANGE

Frequency range   MHz	698-960/1710-2700/3300-3600/4800-5000	MHz
Services	GMS/Wi-Fi/3G/4G/LTE/5G - (5G low band)	



## Technical Specifications

### GAIN

Gain   dBi	10...11 dBi
VSWR	< 2.5

### ELECTRICAL

Front to back ratio - horizontal   dB	> 21 dB
Impedance   $\Omega$	50 $\Omega$

### OPERATIONAL

IP rating	65
Lightning protection	DC ground on the antenna
Temperature - operating   °C	-40... +60 °C

### CONNECTORS

Connector Type	SMA-male
Output cable length   m	7 m
Output cable type	PVC black low loss coaxial cable

### MECHANICAL

Beamwidth horizontal   °	60 °
Beamwidth vertical   °	55 °
Diameter of installation pole   mm	30-53 mm
Bracketry	with wingnuts
Main material	Plastic housing ABS
Colour	RAL 1013 - White
Packing QTY	1
Product Height   mm	210 mm
Product Length   mm	445 mm
Product Depth   mm	70 mm
Packaging Height   m	0.568 m
Packaging Width   m	0.217 m
Packaging Depth   m	0.087 m
Packaging Volume   m <sup>3</sup>	0.011 m <sup>3</sup>
Net Weight   kg	1.180 kg
Tara Weight   kg	0.235 kg
Total Weight   kg	1.415 kg